



# SHELL OIL COMPANY

P. O. Box 1858  
Roswell, New Mexico

November 3, 1961

Mr. A. L. Porter, Jr.  
Secretary-Director  
New Mexico Oil Conservation Commission  
P. O. Box 871  
Santa Fe, New Mexico

Dear Sir:

We are, by this letter and enclosed documents, making application for an exception to Rule 303(a) of the New Mexico Oil Conservation Commission's Rules and Regulations. We propose to commingle the Wolfcamp and Devonian Zones on the Pacific Royalty Lease, Denton Field, Lea County, New Mexico. Both zones are marginal on this lease with no wells physically capable of making top allowable. Both the Devonian and Wolfcamp crudes are sweet and have an API Gravity range between 42° and 46°. No appreciable change in the actual commercial value of production is anticipated. Individual well production will be allocated by monthly well tests which will be conducted by producing the subject well through a three-phase metering separator.

In accordance with Rule 303(b), the following attachments accompany this application: (1) Plat of the lease - (2) Schematic of the proposed installation - (3) Tabulation of gravity, rate and revenue data for the last twelve months - (4) Tabulation of production data for the past 60 days.

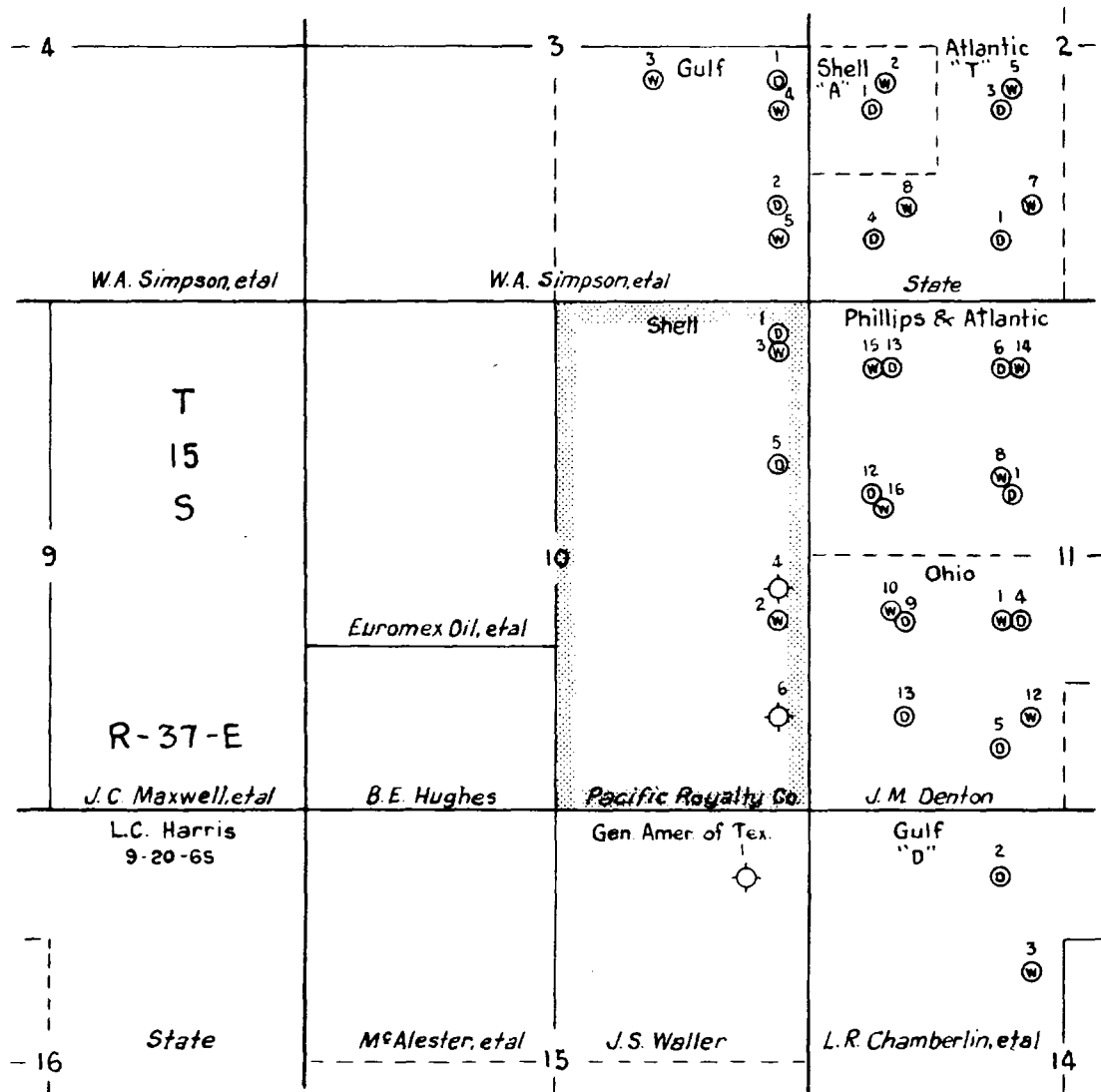
In view of the presented information, we request your approval of this project. 7

Yours very truly,

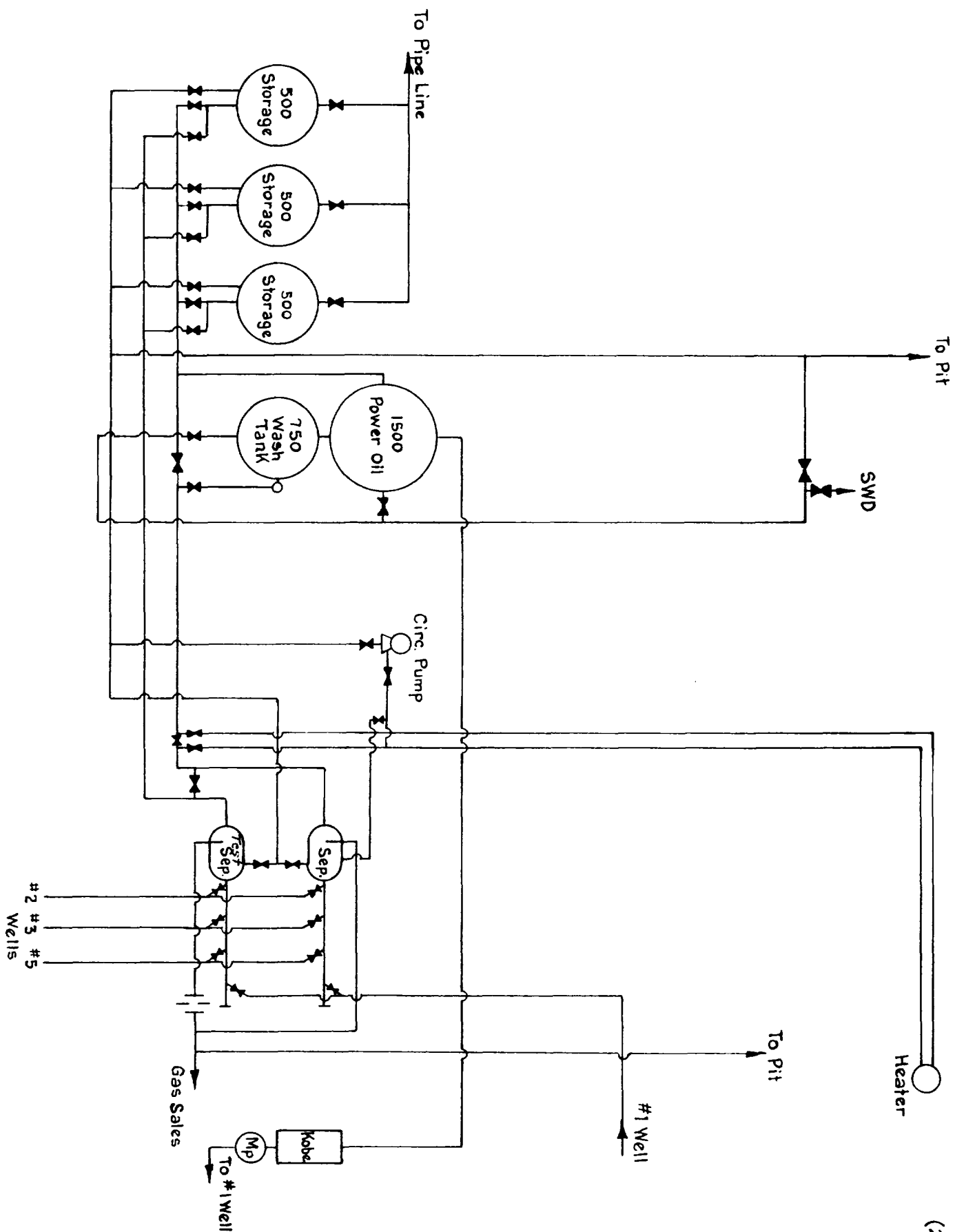
R. L. Ransden

R. L. Rankin  
Division Production Manager

## Attachments



Shell Oil Company.  
DENTON FIELD  
Lea Co., New Mex.  
8-31-61



SHELL OIL CO.  
PACIFIC ROYALTY  
PROPOSED INSTALLATION  
DENTON FIELD



# SHELL OIL COMPANY

P. O. Box 1858  
Roswell, New Mexico

11 PC 1-10

Mr. A. L. Porter, Jr.  
Secretary-Director  
New Mexico Oil Conservation Commission  
P. O. Box 871  
Santa Fe, New Mexico

Dear Sir:

In reference to our letter of ~~November 3, 1961~~, applying for an exception to Rule 303(a) on Shell Oil Company's Pacific Royalty Lease, Denton Field, Lea County, New Mexico, we wish to replace enclosure (3) of said application with the included attachment. The original enclosure (3) is in error due to use of an incorrect pricing schedule for Denton crude oil. Substitute enclosure (3) rectifies the mistake but in no way changes the feasibility of the commingling proposal.

We regret this error and shall appreciate your acceptance of the attached substitution.

Yours very truly,

R. L. Rankin  
Division Production Manager

Attachment

PACIFIC ROYALTY COMMINGLING DATA

(3)

Date	Wolfcamp Gravity	Wolfcamp Production	Devonian Gravity	Devonian Production	Combined Production	Commingled Gravity	Wolfcamp Revenue	Devonian Revenue	Wolfcamp+Dev.	Commingled Revenue
8/60	43.7	5,030	44.4	3,444	8,474	44.0	15,140	10,366	25,506	25,507
9/60	44.0	5,012	44.6	3,445	8,457	44.2	15,086	10,369	25,455	25,456
10/60	44.4	4,406	44.9	3,259	7,665	44.6	13,262	9,810	23,072	23,072
11/60	44.5	5,031	45.2	3,135	8,166	44.8	15,143	9,374	24,517	24,580
12/60	44.9	4,655	45.8	3,149	7,804	45.3	14,012	9,415	23,427	23,334
1/61	44.6	4,667	45.7	2,563	7,230	45.0	14,048	7,663	21,711	21,618
2/61	44.2	4,651	45.6	1,949	6,600	44.6	14,000	5,828	19,828	19,866
3/61	44.2	4,693	45.5	1,961	6,654	44.6	14,126	5,863	19,989	20,029
4/61	43.9	3,890	44.7	1,982	5,872	44.2	11,109	5,966	17,675	17,675
5/61	43.2	3,565	44.6	1,906	5,471	43.7	10,731	5,737	16,468	16,468
6/61	42.9	3,519	44.1	1,418	4,937	43.2	10,592	4,268	14,860	14,860
7/61	43.2	3,822	44.0	2,214	6,036	43.5	11,504	6,664	18,168	18,168
Averages	44.0		44.9			44.4				
Totals		52,941		30,425	83,366		159,352	91,324	250,676	250,633

\*Note: 40.0° to 44.9° API = \$3.01; 45.0° to 45.9° API = \$2.99

ILLEGIBLE

## Pacific Royalty

Production Data				
Well No.	Zone	July Production	August Production	Top Monthly Allowable
1	Devonian	2214	1971	6169
2	Wolfcamp	492	689	4092
3	Wolfcamp	964	875	4092
5	Wolfcamp	2366	2300	4092