

3

TEXACO
INC.

PETROLEUM PRODUCTS



DRAWER 728
HOBBS, NEW MEXICO 88240

May 12, 1966

MAIL OFFICE 000
1966 MAY 15 AM 8 26

New Mexico Oil Conservation Commission
P. O. Box 2088
Santa Fe, New Mexico

Re: Amendment, Order No. PC-192,
TEXACO Inc., L. R. Kershaw Lease,
Lea County, New Mexico

Attention: Mr. A. L. Porter, Jr.

Gentlemen:

In accordance with New Mexico Oil Conservation Commission Rule 303(b) TEXACO Inc. respectfully requests Administrative amendment to Commission Order No. PC-192 for permit to commingle hydrocarbon production from the Skaggs, Skaggs Drinkard, East Weir Tubb and East Weir Blinbry Pools on the L. R. Kershaw Lease located in the NW/4, N/2 NE/4 and NE/4 SW/4 of Section 13, Township 20 South, Range 37 East, Lea County, New Mexico. In support of this request the following is stated:

1. Commission Order No. PC-192, dated February 26, 1964, granted authority to commingle production from the Skaggs and East Weir Tubb Pools on the L. R. Kershaw Lease after separately metering the East Weir Tubb production and determining the Skaggs production by the subtraction method.

2. Commission Order No. PC-192, as amended April 23, 1965, authorized the commingling of production from the Skaggs, Skaggs Drinkard and East Weir Tubb Pools on the L. R. Kershaw Lease after separately metering production from the East Weir Tubb Pool and determining the Skaggs and Skaggs Drinkard production by the subtraction method.

3. Commission Order No. PC-192, as amended December 9, 1965, authorized the commingling of the Skaggs, Skaggs Drinkard and East

Weir Tubb Production on the L. R. Kershaw Lease without separately metering production from the East Weir Tubb Pool since production at that time had declined to a marginal status for all three zones.

4. East Weir Blinebry production on the subject lease has been maintained separately from the above mentioned commingled production. However, at this time it is proposed to commingle production from the Skaggs, Skaggs Drinkard, East Weir Tubb and East Weir Blinebry Pools in order to salvage one existing tank battery and economize present operations.

5. Production from the Eumont (Gas) Pool, the only other producing zone on the L. R. Kershaw Lease, is dry and therefore requires no storage facilities for liquid hydrocarbons.

6. All working royalty and overriding royalty interests are common among all wells and producing zones on the L. R. Kershaw Lease.

7. The expected daily liquid hydrocarbon production from the Skaggs Pool is 24 barrels of 34.6° API gravity oil at \$2.77 per barrel, that from the Skaggs Drinkard Pool is two barrels of 41.0° API gravity oil at \$2.95 per barrel, that from the East Weir Tubb Pool is 69 barrels of 37.7° API gravity oil at \$2.86 per barrel and that from the East Weir Blinebry Pool is 38 barrels of 38.9° API gravity oil at \$2.89 per barrel. The combined daily production after commingling is expected to be 133 barrels of 37.4° API gravity oil at \$2.86 per barrel for a \$0.84 per day gain in revenue.

8. As shown on the attached 60-day tabulation of production, all four zones proposed for commingling are of a marginal status. Therefore, in accordance with Section II, Item I, of the current New Mexico Oil Conservation Commission's "Manual for the Installation and Operation of Commingling Facilities" it is proposed to commingle production from the Skaggs, Skaggs Drinkard, East Weir Tubb and East Weir Blinebry Pools on the L. R. Kershaw Lease without separately metering production from any zone prior to commingling.

Production from each well will be allocated on the basis of well tests. Facilities for accurately determining production from each well are currently installed and shall be used for allocation of production to each well.

9. A lease plat and diagrammatic sketch of the proposed commingling tank battery are attached.


NMOCC

- 3 -

May 12, 1966

In view of the aforementioned TEXACO Inc. respectfully requests amendment of Commission Order No. PC-192 to permit commingling of production from the Skaggs, Skaggs Drinkard, East Weir Tubb and East Weir Blinebry Pools on the L. R. Kershaw Lease and allocation of production on the basis of well tests.

Yours very truly,

A handwritten signature in dark ink, appearing to read "J. G. Blevins, Jr.", is written over the typed name.

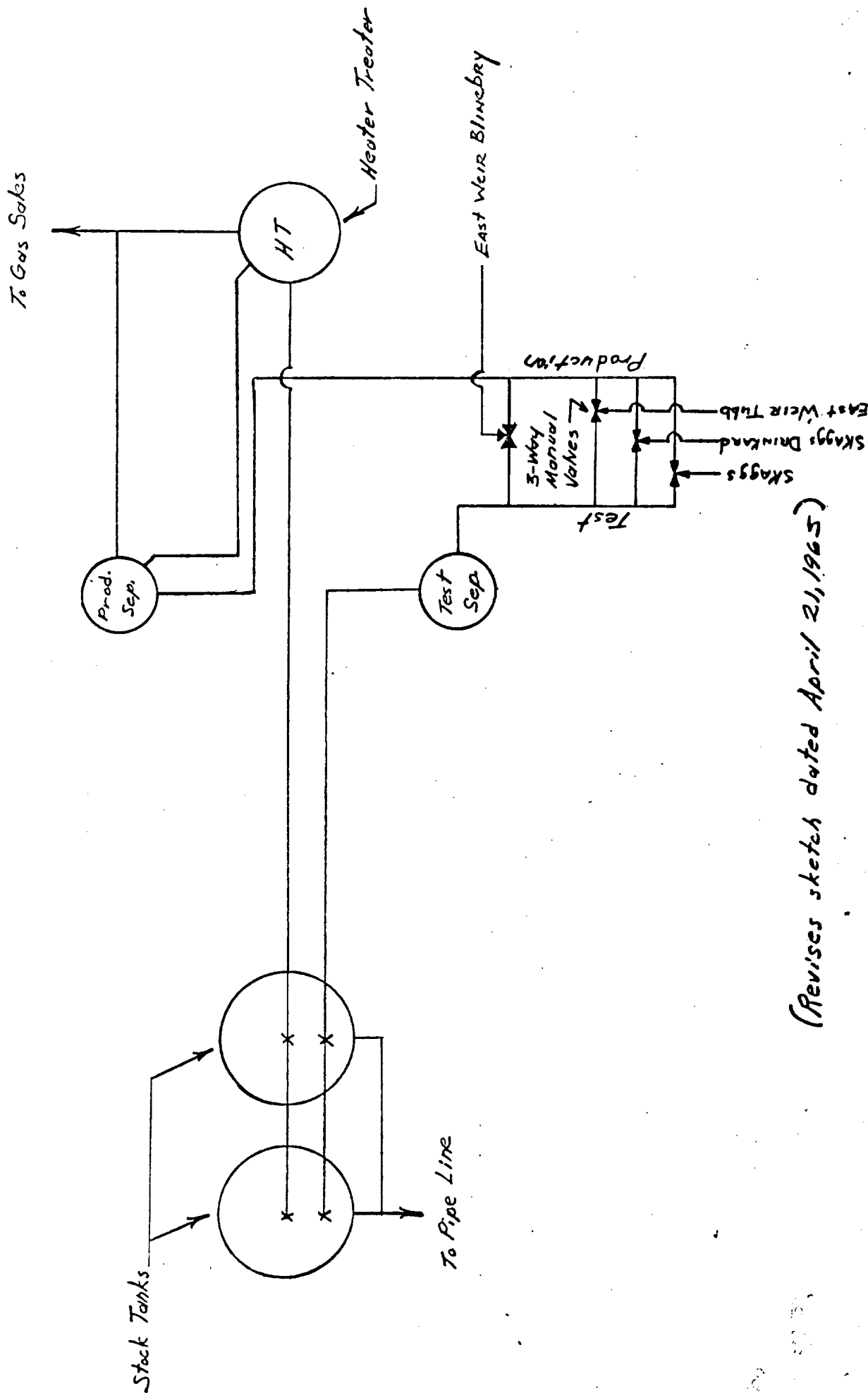
J. G. Blevins, Jr.
Assistant District Superintendent

BLM-jr

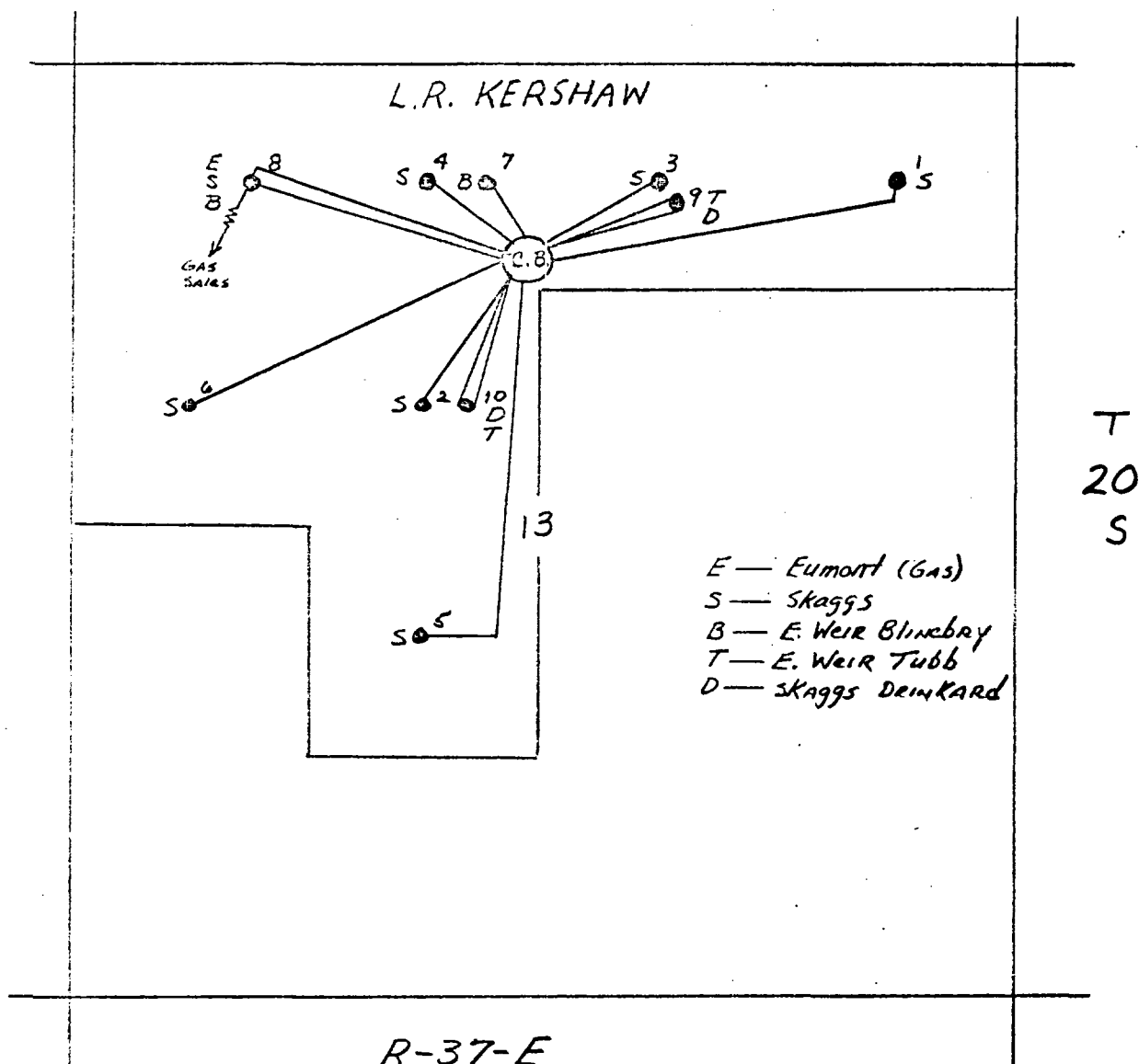
NMOCC-Hobbs

Attachments

TEXACO Inc.
 Proposed Commingling Battery
 L. R. Hershaw Lease
 Lea County, New Mexico
 March 28, 1966



(Revises sketch dated April 21, 1965)



TEXACO INC.
 L.R. KERSHAW LEASE
 SKAGGS, SKAGGS DRINKARD
 E. WEIR (Tubb & Blinbry)
 LCA County, New Mexico

TEXACO Inc.
DAILY PRODUCTION

LEASE L. R. Kershaw

FIELD SKAGGS

TOP ALLOWABLE FORMATION	44	44	44	44	44	44	44
	Grayburg	Grayburg	Grayburg	Grayburg	Grayburg	Grayburg	Grayburg
WELL No.	1	2	3	4	5	6	8
MONTH-DAY	DAILY PRODUCTION						
1966 MARCH	1	8	8	6	1	1	3
	2	6	6	4	3	2	2
	3	6	7	5	2	3	1
	4	5	8	6	3	2	3
	5	4	8	7	2	4	2
	6	4	9	5	3	3	4
	7	5	8	6	3	3	3
	8	4	7	6	3	2	4
	9	4	8	6	2	3	2
	10	4	8	6	4	3	3
	11	5	7	6	2	2	3
	12	5	6	5	3	3	4
	13	4	7	6	3	2	2
	14	3	7	6	4	3	4
	15	5	6	7	2	4	3
	16	4	6	5	3	3	3
	17	4	7	6	3	3	2
	18	5	8	5	2	2	2
	19	5	7	6	1	2	4
	20	6	7	6	2	1	3
	21	4	8	5	2	2	2
	22	5	8	5	2	2	3
	23	5	7	6	1	2	4
	24	5	7	5	1	2	3
	25	5	6	6	2	1	4
	26	6	6	5	2	2	3
	27	6	5	5	3	2	3
	28	6	7	6	2	3	4
	29	5	6	5	2	2	3
	30	6	6	6	2	2	3
	31	6	6	5	2	1	4

TEXACO Inc.
DAILY PRODUCTION

LEASE L. R. Keesler

FIELD E. Weir Tubb, Skaggs DRINKARD, E. Weir Blinberry

TOP ALLOWABLE FORMATION	78	78	78	78	59	59
	E. Weir Tubb	E. Weir Tubb	SKAGGS DRINKARD	SKAGGS DRINKARD	E. Weir Blinberry	E. Weir Blinberry
WELL No.	9	10	9	10	7	8

MONTH-DAY		DAILY PRODUCTION				
1966 March	1	51	17	1		5 3
	2	49	16	1		4 4
	3	50	12	1		4 3
	4	56	16	1		14 32
	5	58	15	1		15 33
	6	57	16	1		14 33
	7	56	14	1		14 33
	8	59	16	1	#10 completed 3-9-66	14 33
	9	57	16	1	3	13 31
	10	57	16	1	5	12 35
	11	56	19	1	1	25 26
	12	56	23	1	1	24 25
	13	58	24	1	1	24 23
	14	59	25	1	1	24 23
	15	57	26	2	1	25 25
	16	57	25	1	1	24 24
	17	57	20	1	1	24 24
	18	50	22	1	1	26 27
	19	51	21	1	1	27 26
	20	49	23	1	1	26 27
	21	50	22	1	0	26 27
	22	50	22	1	0	27 26
	23	50	22	1	0	27 26
	24	50	22	1	0	27 27
	25	58	18	1	3	22 22
	26	59	16	1	4	23 22
	27	63	12	1	4	21 23
	28	64	14	1	5	21 22
	29	64	14	1	6	22 21
	30	64	13	1	6	22 21
	31	65	13	1	5	22 22

TEXACO Inc.
DAILY PRODUCTION

LEASE L. R. Kerstner

FIELD 54,335

TOP ALLOWABLE FORMATION	44	44	44	44	44	44	44
	Grayburg	Grayburg	Grayburg	Grayburg	Grayburg	Grayburg	Grayburg
WELL No.	1	2	3	4	5	6	8
MONTH-DAY	DAILY PRODUCTION						
1966 April	1	5	6	6	1	1	3
	2	5	7	5	1	1	2
	3	5	7	7	1	1	2
	4	5	8	6	1	1	1
	5	5	7	6	1	1	2
	6	5	6	7	1	0	2
	7	5	7	5	1	2	2
	8	6	6	7	1	2	1
	9	4	7	6	2	1	2
	10	5	7	7	1	1	2
	11	4	6	5	1	1	3
	12	6	8	5	1	1	2
	13	5	7	7	1	1	2
	14	5	7	5	2	3	2
	15	6	8	6	1	1	1
	16	4	7	5	2	1	1
	17	5	7	7	0	2	2
	18	5	6	6	2	1	1
	19	4	8	7	1	1	2
	20	5	6	5	1	1	3
	21	6	6	6	2	2	4
	22	5	7	6	1	2	2
	23	5	8	5	2	1	2
	24	4	6	5	2	2	3
	25	6	8	7	1	2	2
	26	5	7	6	2	1	3
	27	5	7	5	1	2	2
	28	5	6	8	2	1	2
	29	4	6	5	1	2	3
	30	3	4	3	2	2	4
	31	3	5	2	2	1	3

TEXACO Inc.
DAILY PRODUCTION

LEASE L. R. Keeshaus

FIELD E. Weir Tubb, Skaggs DRINKARD, E. Weir Blinabry

TOP ALLOWABLE FORMATION	77	77	78	78	59	59
	E. Weir Tubb	E. Weir Tubb	DRINKARD	DRINKARD	E. Weir Blinabry	E. Weir Blinabry
WELL No.	9	10	9	10		
MONTH-DAY	DAILY PRODUCTION					
1966 April						
1	57	14	2	0	14	30
2	56	13	2	0	13	30
3	55	13	2	0	13	29
4	57	13	3	0	12	32
5	57	12	2	0	13	30
6	58	14	3	0	14	30
7	58	13	2	0	13	29
8	57	4	2	0	10	29
9	57	4	2	0	8	28
10	58	4	3	0	7	28
11	57	4	2	0	8	29
12	57	3	1	0	9	29
13	57	5	1	0	9	29
14	57	4	0	0	10	28
15	71	9	2	0	6	25
16	74	10	1	0	6	25
17	70	12	2	0	5	24
18	71	10	2	0	6	24
19	71	10	2	0	4	25
20	72	14	1	0	5	25
21	71	9	2	0	9	24
22	43	25	2	0	10	26
23	42	26	2	0	11	26
24	42	24	1	0	11	27
25	43	25	2	0	10	25
26	44	24	1	0	11	26
27	43	26	2	0	11	26
28	43	30	2	0	10	26
29	35	20	2	0	20	28
30	25	21	2	0	20	38
2	N/O MADE 100% WATER					