

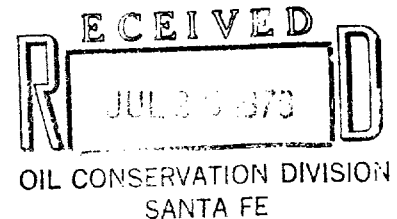
**ENSERCH
EXPLORATION** INC.

P. O. Box 4815
Midland, Texas 79701
915-682-9756

July 24, 1979

Leonard Kersh
District Engineer
West Texas District
Drilling and Production Division

Division Director
Oil Conservation Division
P.O. Box 2088
Santa Fe, New Mexico 87501




Dear Sir:

Application is hereby made by Enserch Exploration, Inc., for an exception to Rule 303-B, permitting the commingling of produced fluids from the South Peterson-Fusselman and Pennsylvanian Pools, Roosevelt County, New Mexico. Ownership and royalty in both the Fusselman and Pennsylvanian Pools are the same.

The commingled API gravity of the liquid will not have any bearing on its value since the purchaser's contract only allows for corrections below 40⁰ API. At present, the gravity of all produced fluids is above 40⁰ API (attached C-105's). Therefore, the actual commercial value of the liquid after commingling will be the same as before commingling. There is, however, a difference in the liquid price between the Lambirth No. 6 and 7 wells, and the Lambirth No. 1, 3, and 4. The Lambirth No. 6 and 7 are subject to the new oil discovery price of \$23.25/Bbl, whereas production from the Lambirth No. 1, 3, and 4 is classified as new oil (approx. \$13.60/Bbl). Proper metering and testing, as outlined in the schematic, should eliminate any discrepancy in the value of the commingled liquid.

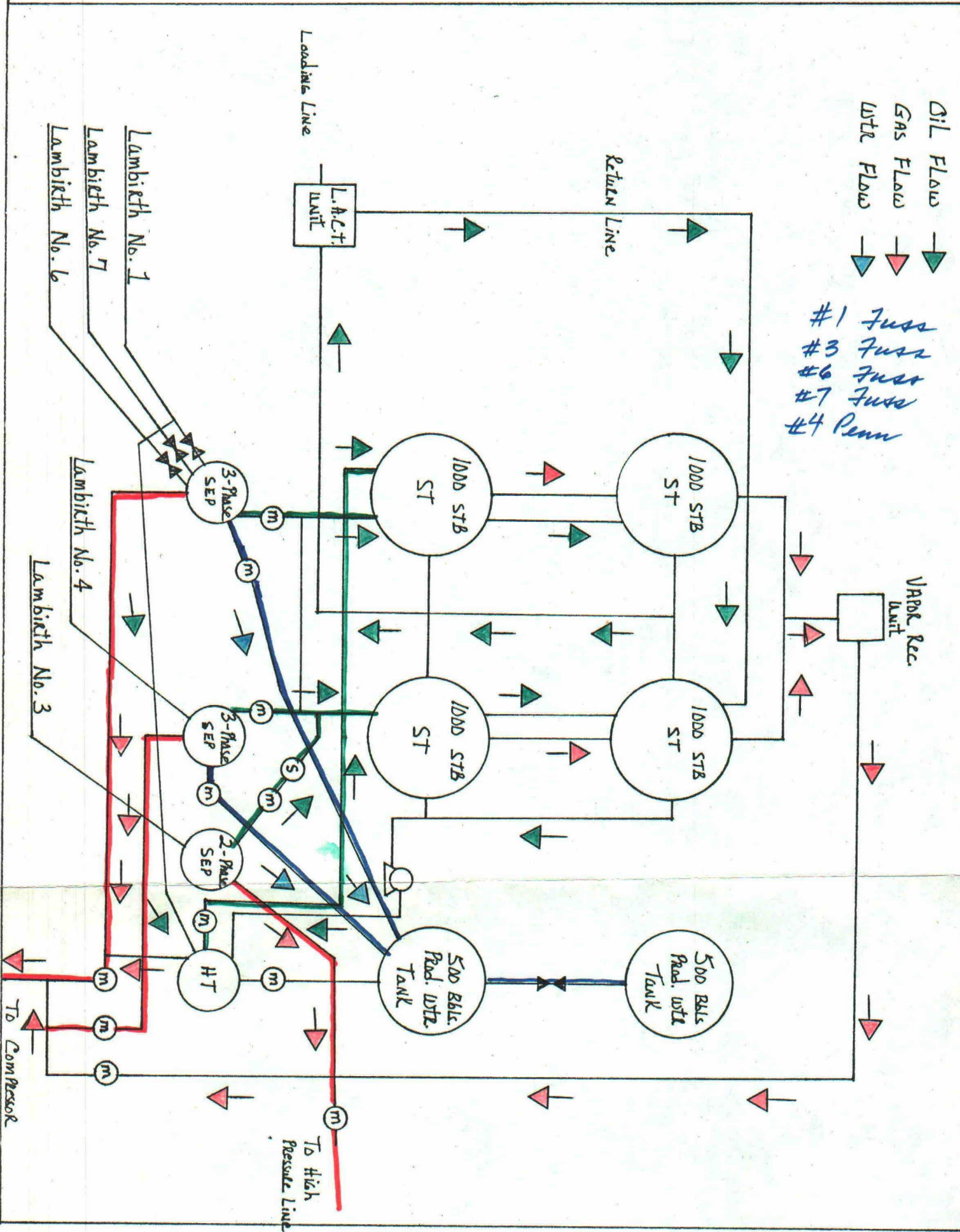
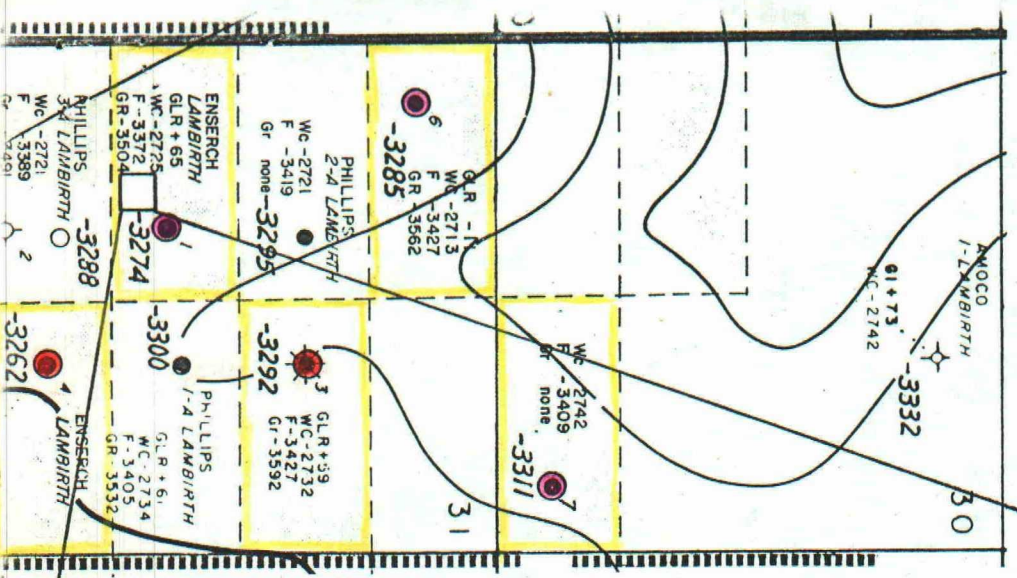
Yours truly,


Leonard Kersh

LK:dh
Attachments

South Peterson Field
 Roosevelt County, New Mexico
 Enserrch Exploration, Inc.
 Lambirth Central Storage
 Sec. 31, T5S, R33E

● Fusselman Oil Producer
 ● Penn. Oil Producer



NO. OF COPIES RECEIVED	
DISTRIBUTION	
SANTA FE	
FILE	
U.S.G.S.	
LAND OFFICE	
OPERATOR	

**NEW MEXICO OIL CONSERVATION COMMISSION
WELL COMPLETION OR RECOMPLETION REPORT AND LOG**

Form C-105
Revised 1-1-65

5a. Indicate Type of Lease
State ☐ Fee ☒

5. State Oil & Gas Lease No.

1a. TYPE OF WELL
OIL WELL ☒ GAS WELL ☐ DRY ☐ OTHER _____

b. TYPE OF COMPLETION
NEW WELL ☒ WORK OVER ☐ DEEPEN ☐ PLUG BACK ☐ DIFF. RESVR. ☐ OTHER _____

7. Unit Agreement Name

8. Farm or Lease Name
Lambirth

2. Name of Operator
Enserch Exploration, Inc.

9. Well No.
1

3. Address of Operator
P. O. Box 4815, Midland, Texas 79701

10. Field and Pool, or Wildcat
Wildcat

4. Location of Well
UNIT LETTER K LOCATED 1980 FEET FROM THE South LINE AND 1980 FEET FROM

11. County
Roosevelt

THE West LINE OF SEC. 31 TWP. 5S RGE. 33E NMPM

12. County
Roosevelt

15. Date Spudded 3-31-78 16. Date T.D. Reached 5-16-78 17. Date Compl. (Ready to Prod.) 6-4-78 18. Elevations (DP, RKB, RT, GR, etc.) 4413.8' GR 19. Elev. Casinghead 4414.8'

20. Total Depth 7992' 21. Plug Back T.D. 7927' 22. If Multiple Compl., How Many _____ 23. Intervals Drilled by Rotary Tools 0-7992' Cable Tools _____

25. Was Directional Survey Made
No

24. Producing Interval(s), of this completion - Top, Bottom, Name
7808'-52', Fusselman

27. Was Well Cored
No

26. Type Electric and Other Logs Run
CNL-FDC, DLL, BHC Sonic, Dip Meter, CBL/GR

28. CASING RECORD (Report all strings set in well)

CASING SIZE	WEIGHT LB./FT.	DEPTH SET	HOLE SIZE	CEMENTING RECORD	AMOUNT PULLED
13-3/8"	48#	356'	17-1/2"	350 sx. Class C (Circ.)	--
8-5/8"	24# & 32#	3327'	12-1/4"	1950 sx. Lite & C (Circ.)	--
5-1/2"	15.5#	7959'	7-7/8"	725 sx. Lite & H 50/50 Poz	--

29. LINER RECORD

SIZE	TOP	BOTTOM	SACKS CEMENT	SCREEN

30. TUBING RECORD

SIZE	DEPTH SET	PACKER SET
2-3/8"	7780'	7780'

31. Perforation Record (Interval, size and number)
7808'-52', 14 holes, .46" size

32. ACID, SHOT, FRACTURE, CEMENT SQUEEZE, ETC.

DEPTH INTERVAL	AMOUNT AND KIND MATERIAL USED
7768' (4 holes)	Could not break down
7870' (4 holes)	Squeezed w/150 sx. H & Neat
7767' (4 holes)	Could not break down
7808'-52' (14 holes)	3000 gals. MOD-202

33. PRODUCTION

Date First Production <u>6-4-78</u>	Production Method (Flowing, gas lift, pumping - Size and type pump) <u>Flowing</u>	Well Status (Prod. or Shut-in) <u>Shut-in</u>
Date of Test <u>6-4-78</u>	Hours Tested <u>24</u>	Choke Size <u>1/4"</u>
Flow Tubing Press. <u>585 psi</u>	Casing Pressure <u>Packer</u>	Calculated 24-Hour Rate <u>638</u>
	Oil - Bbl. <u>638</u>	Gas - MCF <u>703</u>
	Water - Bbl. <u>- 0 -</u>	Gas - Oil Ratio <u>1102/1</u>
	Oil Gravity - API (Corr.) <u>49.8°</u>	

34. Disposition of Gas (Sold, used for fuel, vented, etc.)
Vented during test

Test Witnessed By
S. D. Reed

35. List of Attachments
Deviation Record, Logs, Plat, DST Charts

36. I hereby certify that the information shown on both sides of this form is true and complete to the best of my knowledge and belief.

SIGNED [Signature] TITLE Production Superintendent DATE 6-6-78

NO. OF COPIES RECEIVED	
DISTRIBUTION	
SANTA FE	
FILE	
U.S.G.S.	
LAND OFFICE	
OPERATOR	

JUG 9 1978

m C-105

Revised 1-1-65

MB

NEW MEXICO OIL CONSERVATION COMMISSION ENGINEERING WELL COMPLETION OR RECOMPLETION REPORT AND LOG

5a. Indicate Type of Lease: ☐ Oil ☒ Gas

5. State Oil & Gas Lease No.

1a. TYPE OF WELL				7. Unit Agreement Name			
OIL WELL <input checked="" type="checkbox"/> GAS WELL <input type="checkbox"/> DRY <input type="checkbox"/> OTHER <input type="checkbox"/>				8. Farm or Lease Name			
b. TYPE OF COMPLETION				Lambirth			
NEW WELL <input checked="" type="checkbox"/> WORK OVER <input type="checkbox"/> DEEPEN <input type="checkbox"/> PLUG BACK <input type="checkbox"/> DIFF. RESVR. <input type="checkbox"/> OTHER <input type="checkbox"/>				9. Well No.			
2. Name of Operator				3			
Enserch Exploration, Inc.				10. Field and Pool, or Wildcat			
3. Address of Operator				South Peterson-Fusselman			
P. O. Box 4815, Midland, Texas 79701							
4. Location of Well							
UNIT LETTER <u>G</u> LOCATED <u>1980</u> FEET FROM THE <u>North</u> LINE AND <u>1980</u> FEET FROM				12. County			
THE <u>East</u> LINE OF SEC. <u>31</u> TWP. <u>5S</u> RGE. <u>33E</u> NMPM				Roosevelt			
15. Date Spudded	16. Date T.D. Reached	17. Date Compl. (Ready to Prod.)	18. Elevations (DF, RKB, RT, GR, etc.)	19. Elev. Casinghead			
6-5-78	7-10-78	7-26-78	4393.5' GR	4394.5'			
20. Total Depth	21. Plug Back T.D.	22. If Multiple Compl., How Many	23. Intervals Drilled By	Rotary Tools Cable Tools			
8030'	7900'		0-8030'				
24. Producing Interval(s), of this completion - Top, Bottom, Name				25. Was Directional Survey Made			
7840'-49' Fusselman				No			
26. Type Electric and Other Logs Run				27. Was Well Cored			
CND w/Caliper & GR, DIL				Yes			
28. CASING RECORD (Report all strings set in well)							
CASING SIZE	WEIGHT LB./FT.	DEPTH SET	HOLE SIZE	CEMENTING RECORD		AMOUNT PULLED	
13-3/8"	48#	377'	17-1/2"	350 sx.			
8-5/8"	24# & 32#	3297'	12-1/4"	2000 sx.			
5-1/2"	15.5#	8030'	7-7/8"	800 sx.			
29. LINER RECORD				30. TUBING RECORD			
SIZE	TOP	BOTTOM	SACKS CEMENT	SCREEN	SIZE	DEPTH SET	PACKER SET
					2-3/8"	7884'	
31. Perforation Record (Interval, size and number)				32. ACID, SHOT, FRACTURE, CEMENT SQUEEZE, ETC.			
7840'-49', 9 holes, .43" size							
				DEPTH INTERVAL			
				7940'-44'			
				200 gals.10%MCA,1000 gal.MOD-20			
				Squeezed w/175 sx. Class "H"			
				7840'-49'			
				200 gal.10%MCA,1500 gal.MOD-20			
33. PRODUCTION							
Date First Production		Production Method (Flowing, gas lift, pumping - Size and type pump)				Well Status (Prod. or Shut-in)	
7-20-78		Pumping 2" x 1 1/2" x 20'				Prod.	
Date of Test	Hours Tested	Choke Size	Prod'n. For Test Period	Oil - Bbl.	Gas - MCF	Water - Bbl.	Gas - Oil Ratio
7-31-78	24	W/O		25	64	12	2560/1
Flow Tubing Press.	Casing Pressure	Calculated 24-Hour Rate	Oil - Bbl.	Gas - MCF	Water - Bbl.	Oil Gravity - API (Corr.)	
	30 psi		25	64	12	50.4	
34. Disposition of Gas (Sold, used for fuel, vented, etc.)						Test Witnessed By	
Vented during test.						S. D. Reed	
35. List of Attachments							
Deviation Record, Logs, Plat, Core Analysis							
36. I hereby certify that the information shown on both sides of this form is true and complete to the best of my knowledge and belief.							
SIGNED <u>H. A. Burnett</u>				TITLE <u>Production Superintendent</u>		DATE <u>8-8-78</u>	

7/10/78

NO. OF COPIES RECEIVED	
DISTRIBUTION	
SANTA FE	
FILE	
U.S.G.S.	
LAND OFFICE	
OPERATOR	

NEW MEXICO OIL CONSERVATION COMMISSION
WELL COMPLETION OR RECOMPLETION REPORT AND LOG

Form O-105
Revised 1-1-65

ENGINEERING

1a. TYPE OF WELL OIL WELL <input checked="" type="checkbox"/> GAS WELL <input type="checkbox"/> DRY <input type="checkbox"/> OTHER <input type="checkbox"/>				7. Plat Agreement Name	
b. TYPE OF COMPLETION NEW WELL <input checked="" type="checkbox"/> WORK OVER <input type="checkbox"/> DEEPEN <input type="checkbox"/> PLUG BACK <input type="checkbox"/> DIFF. RESVR. <input type="checkbox"/> OTHER <input type="checkbox"/>				c. Name of Lease Name Lambirth	
2. Name of Operator Enserch Exploration, Inc.				8. Well No. 4	
3. Address of Operator Box 4815, Midland, Texas 79701				10. Field and Pool, or Wildcat Wildcat	
4. Location of Well UNIT LETTER 0 LOCATED 660 FEET FROM THE South 1980				11. County Roosevelt	
15. Date Gridded 7-13-78		16. Date T.D. Reached 8-20-78		17. Date Compl. (Ready to Prod.) 9-6-78	
18. Elevations (DF, RKB, RT, GR, etc.) 4418.8' GR		19. Elev. Casinghead 4419.8'			
20. Total Depth 7940'		21. Plug Back T.D. 7765'		22. If Multiple Compl., How Many --	
23. Interval 0-7940'		24. Producing Interval(s), of this completion -- Top, Bottom, Name 7696'-7705', Pennsylvanian		25. Was Directional Survey Made No	
26. Type Electric and Other Logs Run CNL-FDL, DLL, BHC Sonic				27. Was Well Cored Yes	
28. CASING RECORD (Report all strings set in well)					
CASING SIZE		WEIGHT LB./FT.		DEPTH SET	
13-3/8" OD		48#		372'	
8-5/8" OD		24# & 32#		3349'	
5-1/2" OD		15.5#		7940'	
HOLE SIZE		CEMENTING RECORD		AMOUNT PULLED	
17-1/2"		350 sx. (Circulated)		--	
12-1/4"		2000 sx. (Circulated)		--	
7-7/8"		1075 sx.		--	
29. LINER RECORD			30. TUBING RECORD		
SIZE		TOP		BOTTOM	
SACKS CEMENT		SCREEN		SIZE	
				2-3/8" OD	
				DEPTH SET	
				7655'	
				PACKER SET	
				7655'	
31. Perforation Record (Interval, size and number)			32. ACID, SHOT, FRACTURE, CEMENT SQUEEZE, ETC.		
7809'-14', .43", 6 holes			DEPTH INTERVAL		
7696'-7705', .43", 10 holes			AMOUNT AND KIND MATERIAL USED		
			7809'-14' 1600 gals. 15% NE HCL, CIBP set @ 7800' w/5 sx. cement on top		
			7696'-7705' 2100 gals. MOD 202		
33. PRODUCTION					
Date First Production 9-2-78		Production Method (Flowing, gas lift, pumping -- Size and type pump) Flowing			Well Status (Prod. or Shut-in) Prod.
Date of Test 9-6-78	Hours Tested 24	Choke Size 18/64"	Prod'n. For Test Period 204	Oil -- BBL. 349	Water -- BBL. 58
Flow Tubing Press. 350 psi	Casing Pressure --	Calculated 24-Hour Rate 204	Gas -- MCF 349	Water -- BBL. 58	Gas -- Oil Ratio 1711/1
34. Disposition of Gas (Sold, used for fuel, vented, etc.) Vented during test.					Test Witnessed By S. D. Reed
35. List of Attachments Deviation Record, Logs, Plat, DST Charts, Core Analysis					
36. I hereby certify that the information shown on both sides of this form is true and complete to the best of my knowledge and belief.					
SIGNED <i>S. D. Reed</i>		TITLE Prod. Superintendent		DATE 9-8-78	

NO. OF COPIES RECEIVED	
DISTRIBUTION	
SANTA FE	
FILE	
U.S.G.S.	
LAND OFFICE	
OPERATOR	

**NEW MEXICO OIL CONSERVATION COMMISSION
WELL COMPLETION OR RECOMPLETION REPORT AND LOG**

Form 7-105
Revised 1-1-65

6a. Estimate Type of Lease at the <input type="checkbox"/> Fee <input checked="" type="checkbox"/>
6b. Date Oil & Gas Lease Exp.

1a. TYPE OF WELL b. TYPE OF COMPLETION NEW WELL <input checked="" type="checkbox"/> WORK OVER <input type="checkbox"/> DEEPEN <input type="checkbox"/> OIL WELL <input checked="" type="checkbox"/> GAS WELL <input type="checkbox"/> DRY <input type="checkbox"/> OTHER <input type="checkbox"/> PLUG BACK <input type="checkbox"/> DIFF. RESVR. <input type="checkbox"/> OTHER <input type="checkbox"/>	2. Name of Operator Enserch Exploration, Inc.	7. Unit Agreement Name	8. Firm or Lease Name Lambirth	9. Well No. 6	10. Field and Pool, or Wildcat South Peterson Fusselman
3. Address of Operator P. O. Box 4815, Midland, Texas 79701	4. Location of Well				

UNIT LETTER D LOCATED 766 FEET FROM THE West LINE AND 766 FEET FROM
THE North LINE OF SEC. 31 TWP. 5S RGE. 33E NMPM

15. Date Spudded 2-4-79	16. Date T.D. Reached 2-24-79	17. Date Compl. (Ready to Prod.) 3-20-79	18. Elevations (DF, RKB, RT, GR, etc.) 4381.4' GR	19. Elev. Casinghead 4382.4'
20. Total Depth 8000'	21. Plug Back T.D. 7862'	22. If Multiple Compl., How Many	23. Intervals Drilled by Rotary Tools 0 - 8000'	Cable Tools
24. Producing Interval(s), of this completion - Top, Bottom, Name 7830'-35' Fusselman				25. Was Directional Survey Made No
26. Type Electric and Other Logs Run CNFD, DL, BHC Sonic, GR				27. Was Well Cored No

28. CASING RECORD (Report all strings set in well)					
CASING SIZE	WEIGHT LB./FT.	DEPTH SET	HOLE SIZE	CEMENTING RECORD	AMOUNT PULLED
13-3/8"	48#	335'	17-1/2"	500 sx. Class H (Circ.)	--
8-5/8"	24#	2005'	11"	700 sx. Class C (Circ.)	--
4-1/2"	11.6#	8000'	7-7/8"	1875 sx.	

29. LINER RECORD					30. TUBING RECORD		
SIZE	TOP	BOTTOM	SACKS CEMENT	SCREEN	SIZE	DEPTH SET	PACKER SET
					2-3/8"	7778'	7778'

31. Perforation Record (Interval, size and number) 7828'-40', 10 holes, .43" size, squeezed 7872', 4 holes, .43" size, squeezed 7830'-35', 6 holes, .43" size	32. ACID, SHOT, FRACTURE, CEMENT SQUEEZE, ETC. <table border="1"> <tr> <th>DEPTH INTERVAL</th> <th>AMOUNT AND KIND MATERIAL USED</th> </tr> <tr> <td>7828'-40' (10 holes)</td> <td>2000 gals. MOD 202</td> </tr> <tr> <td>7872' (4 holes)</td> <td>Squeezed w/100 sx. Class H</td> </tr> <tr> <td>7830'-35' (6 holes)</td> <td>250 gals. MSA Acid</td> </tr> </table>	DEPTH INTERVAL	AMOUNT AND KIND MATERIAL USED	7828'-40' (10 holes)	2000 gals. MOD 202	7872' (4 holes)	Squeezed w/100 sx. Class H	7830'-35' (6 holes)	250 gals. MSA Acid
DEPTH INTERVAL	AMOUNT AND KIND MATERIAL USED								
7828'-40' (10 holes)	2000 gals. MOD 202								
7872' (4 holes)	Squeezed w/100 sx. Class H								
7830'-35' (6 holes)	250 gals. MSA Acid								

33. PRODUCTION							
Date First Production 3-10-79		Production Method (Flowing, gas lift, pumping - Size and type pump) Flowing				Well Status (Prod. or Shut-in) Producing	
Date of Test 3-20-79	Hours Tested 24	Choke Size 3/8"	Prod'n. Per Test Period →	Oil - Bbl. 204	Gas - MCF 316	Water - BBL. 65	Gas - Oil Ratio 1549/1
Flow Tubing Press. 100 psi	Casing Pressure Packer	Calculated 24-Hour Rate →	Oil - Bbl. 204	Gas - MCF 316	Water - BBL. 65	Oil Gravity - API (Corr.) 50.1	

34. Disposition of Gas (Sold, used for fuel, vented, etc.) Vented during test.	Test Witnessed By B. J. Warren, Jr.
---	--

35. List of Attachments Deviation Record, Logs, Plat

36. I hereby certify that the information shown on both sides of this form is true and complete to the best of my knowledge and belief.		
SIGNED <u>B. J. Warren, Jr.</u>	TITLE <u>Production Superintendent</u>	DATE <u>3-20-79</u>

NO. OF COPIES RECEIVED	
DISTRIBUTION	
SANTA FE	
FILE	
U.S.G.S.	
LAND OFFICE	
OPERATOR	

**NEW MEXICO OIL CONSERVATION COMMISSION
WELL COMPLETION OR RECOMPLETION REPORT AND LOG**

Copy
Form C-105
Revised 1-1-65

5a. Indicate Type of Lease
State ☐ Fee ☒
5b. File Oil & Gas Lease No.

1a. TYPE OF WELL OIL WELL <input checked="" type="checkbox"/> GAS WELL <input type="checkbox"/> DRY <input type="checkbox"/> OTHER <input type="checkbox"/>						7. Unit Agreement Name	
b. TYPE OF COMPLETION NEW WELL <input checked="" type="checkbox"/> WORK OVER <input type="checkbox"/> DEEPEN <input type="checkbox"/> PLUG BACK <input type="checkbox"/> DIFF. RESVR. <input type="checkbox"/> OTHER <input type="checkbox"/>						8. Farm or Lease Name Lambirth	
2. Name of Operator Enserch Exploration, Inc.						9. Well No. 7	
3. Address of Operator P. O. Box 4815, Midland, Texas 79701						10. Field and Pool, or Wildcat South Peterson Fusselman	
4. Location of Well UNIT LETTER <u>P</u> LOCATED <u>660</u> FEET FROM THE <u>East</u> LINE AND <u>510</u> FEET FROM						12. County Roosevelt	
THE <u>South</u> LINE OF SEC. <u>30</u> TWP. <u>5S</u> RGE. <u>33E</u> NMPK.							
15. Date Spudded 4-2-79		16. Date T.D. Reached 4-27-79		17. Date Compl. (Ready to Prod.) 6-6-79		18. Elevations (DF, RKB, RT, GR, etc.) 4376.5' GR	
19. Elev. Casinghead 4376.5'		20. Total Depth 7872'		21. Plug Back T.D. 7846'		22. If Multiple Compl., How Many	
23. Intervals Drilled By →		Rotary Tools All		Cable Tools			
24. Producing Interval(s), of this completion — Top, Bottom, Name 7826'-29.5', Fusselman						25. Was Directional Survey Made No	
26. Type Electric and Other Logs Run DLL, CNFD, Radioactivity, Acoustic CBMS						27. Was Well Cored No	
28. CASING RECORD (Report all strings set in well)							
CASING SIZE	WEIGHT LB./FT.	DEPTH SET	HOLE SIZE	CEMENTING RECORD		AMOUNT PULLED	
13-3/8" OD	48#	358'	17-1/2"	300 sx., Circulated		--	
8-5/8" OD	24#	1991'	12-1/4"	750 sx., Circulated		--	
5-1/2" OD	15.5#	7858'	7-7/8"	450 sx.		--	
29. LINER RECORD				30. TUBING RECORD			
SIZE	TOP	BOTTOM	SACKS CEMENT	SCREEN	SIZE	DEPTH SET	PACKER SET
					2-3/8"	7845'	--
31. Perforation Record (Interval, size and number) 7826' to 7829.5', .43", 8 holes				32. ACID, SHOT, FRACTURE, CEMENT SQUEEZE, ETC.			
DEPTH INTERVAL				AMOUNT AND KIND MATERIAL USED			
7826'-29.5'				150 gals. 5% NE HCL Acid			
33. PRODUCTION							
Date First Production 6-12-79		Production Method (Flowing, gas lift, pumping — Size and type pump) Pumping				Well Status (Prod. or Shut-in) Prod.	
Date of Test 6-16-79	Hours Tested 24	Choke Size --	Prod'n. Per Test Period →	Oil — Bbl. 117	Gas — MCF 138	Water — Bbl. 87	Gas — Oil Ratio 1180/1
Flow Tubing Press.	Casing Pressure 70#	Calculated 24-Hour Rate →	Oil — Bbl. 117	Gas — MCF 138	Water — Bbl. 87	Oil Gravity — API (Corr.) 51	
34. Disposition of Gas (Sold, used for fuel, vented, etc.) Vented during test						Test Witnessed By B. J. Warren, Jr.	
35. List of Attachments Deviation Record, Logs & Plat, DST Chart							
36. I hereby certify that the information shown on both sides of this form is true and complete to the best of my knowledge and belief.							
SIGNED <u>Gerry Nash</u>				TITLE <u>Dist. Prod. Manager</u>		DATE <u>6-19-79</u>	