

MARKS-GARNER PRODUCTION CO.

Phone (505) 396-5326
P.O. Box 70 - 1421 S. Love St.
Lovington, New Mexico 88260

PRODUCERS OF OIL & GAS

OIL CONSERVATION DIVISION

RECEIVED

'89 DEC 6 AM 8 50

December 4, 1989

Oil Conservation Division
P O Box 2088
Santa Fe, New Mexico 87504-2088

ATTN: David Catanack


RE: Commingling of Wells

Dear Mr. Catanack:

Attached is a printout showing the lease name, number, location, and well numbers as you requested during your phone conversation with Buddy Garner on this date.

We are also attaching a copy of the well setup drawing we made for the Commissioner of Public Lands. If you need any further information please contact our office.

Thank you,


Debra M. Necaise
Office Manager

MARKS-GARNER PRODUCTION CO.

PRODUCERS OF OIL & GAS

Phone (505) 396-5326

P.O. Box 70 - 1421 S. Love St.

Lovington, New Mexico 88260

October 30, 1989

Commissioner of Public Lands
State Land Office
P O Box 1148
Santa Fe, NM 87504-1148

RE: Leases B-1161 & B-6807
Commingle in March 1988
Lease B-1439 & E-1830
Request to Commingle

Dear Land Commissioner:

Enclosed is a map of complete flow-lines from the leases we wish to commingle. Flow-lines shown on this map are undergrounds 4" steel pipe that we purchased from Tex-New Mexico Pipeline Company on December 22, 1986. They were in place with right-of-way included.

We expect these wells to increase the oil production when we complete the commingling.

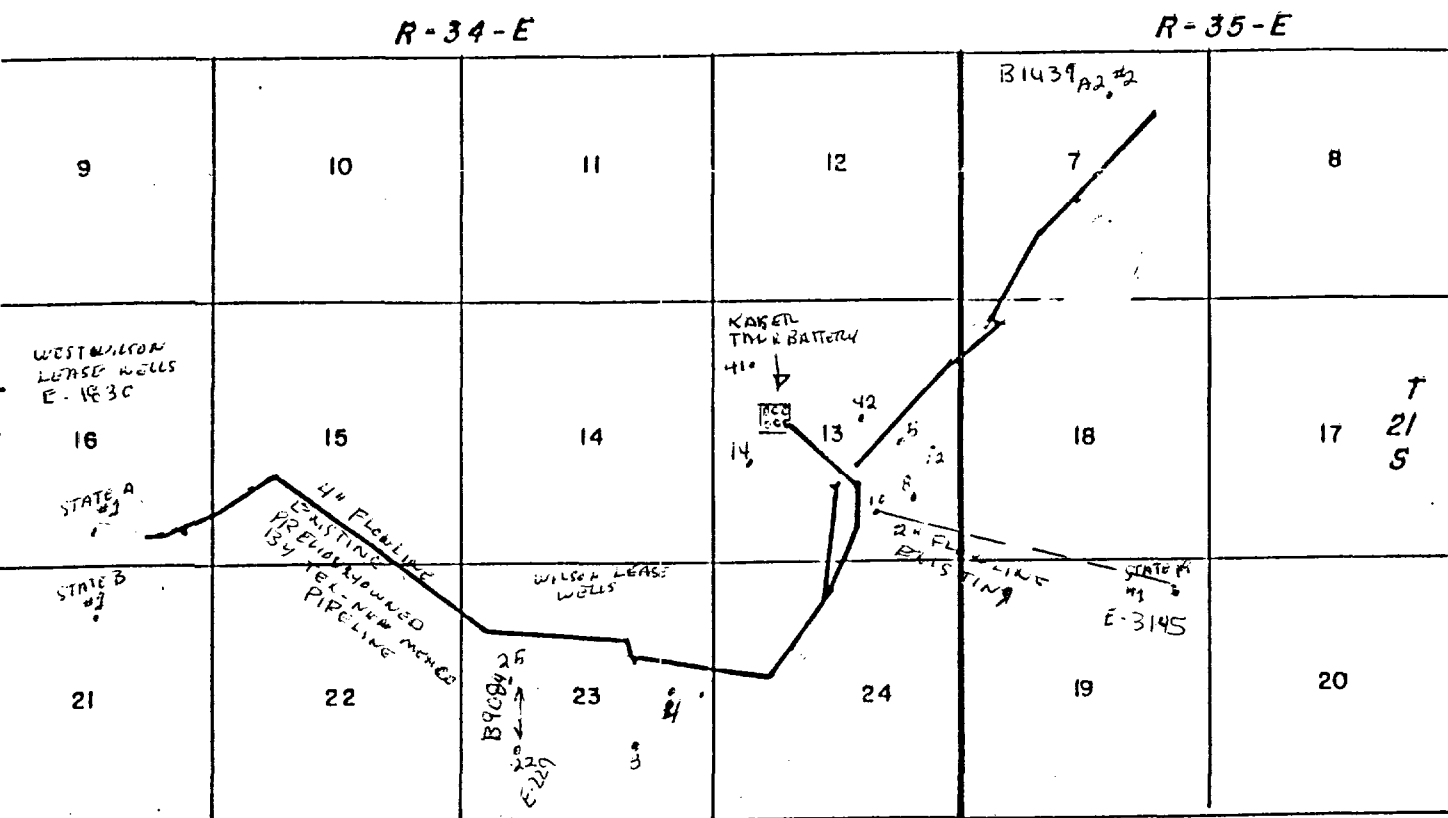
Also, enclosed is a chart showing all the detailed information requested by your office in your letter dated October 24, 1989.

If we can be of any further assistance, please contact our office.

Thank you,



Debra M. Necaise



LEA COUNTY, NEW MEXICO



38,147' OF 4" PIPE
7,503' OF 3" PIPE

TEXAS-NEW MEXICO PIPE
LINE COMPANY

SALE OF
WILSON FIELD GATHERING SYSTEM
TO MARKS-GARNER PRODUCTION CO.

SCALE — DATE — DRAWING NO.

YATES SEVEN RIVERS FORMATION

LEASE NAME	WELL #	LOCATION	SEPTEMBER PRODUCTION	INTEREST	GRAVITY
WILSON STATE "A" B-1439	2	7-21S-35E	HELD BY OTHER PRO- DUCTION EST 5 BBLs PER DAY	87.5 M & G 12.5 STATE	27 - 28
WEST WILSON STATE "A", E-1830	1	16-21S-34E	2 BBLs	87.5 M & G 12.5 STATE	27 - 28
STATE "B", E-1830	1	21-21S-34E	2 BBLs		
Kaiser State B-6807 & B-11610 (THESE WELLS WERE COMINGLED IN 1988)	5 10 14 41 42 4	13-21S-34E 13-21S-34E 13-21S-34E 13-21S-34E 13-21S-34E 23-21S-34E	388 BBLs 0 BBLs 621 BBLs 205 BBLs 388 BBLs 560 BBLs	87.5 M & G 12.5 STATE	27 - 28
STATE "23", B-9084	25	23-21S-34E	45 MCF	87.5 M & G 12.5 STATE	27 - 28
STATE "E", E-229	22	23-21S-34E	46 MCF		
STATE "19", E-3145	1	19-21S-35E	5 BBLs	87.5 M & G 12.5 STATE	27 - 28

Water Line
Gas
Oil

