

MOREXCO, INC.

P. O. Box 481  
Artesia, NM 88211

OIL CONSERVATION DIVISION  
RECEIVED

July 26, 1995

1995 JUL 31 AM 8 52

State of New Mexico  
Oil Conservation Division  
2040 S. Pacheco  
Santa Fe, NM 87505

Attn: Mr. Michael E. Stogner

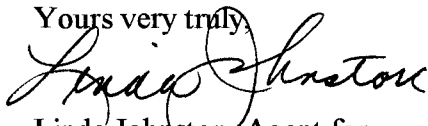
Re: Unorthodox Location for Holt, J.R. B Well No. 2 1190 FSL & 1195 FEL  
Unit P, Sec 5, T19S, R37E, Lea County and  
Unorthodox Location for Holt, J. R. A Well No. 1 1980 FNL and 1980 FEL  
Unit G, Sec. 5, T19S, R37E, Lea County, NM

Dear Mr. Stogner:

We are requesting approval of unorthodox location of the above mentioned wells which was previously approved by NSP 397 in 1957 and amended in 1990 when well no. 2 was completed. We are requesting the original approval to be revised so they will be listed as two properties with acreage assigned to each as outlined on the attached C-102 which has been filed with the District Office.

Your consideration to this request is greatly appreciated.

Yours very truly,



Linda Johnston, Agent for  
Morexco, Inc.  
P. O. Box 7663  
Midland, TX 79708  
(915) 694-8228

Submit to Appropriate  
District Office  
State Lease - 4 copies  
Fee Lease - 3 copies

State of New Mexico  
Energy, Minerals and Natural Resources Department

Form C-102  
Revised 1-1-89

OIL CONSERVATION DIVISION

P.O. Box 2088  
Santa Fe, New Mexico 87504-2088

DISTRICT I  
P.O. Box 1980, Hobbs, NM 88240

DISTRICT II  
P.O. Drawer DD, Artesia, NM 88210

DISTRICT III  
1000 Rio Brazos Rd., Aztec, NM 87410

WELL LOCATION AND ACREAGE DEDICATION PLAT

All Distances must be from the outer boundaries of the section

Operator Morexco, Inc.			Lease Holt, J. R. B		Well No. 2
Unit Letter P	Section 5	Township 19S	Range 37E	County NMPM	Lea
Actual Footage Location of Well: 1190 feet from the South line and 1195 feet from the East line					
Ground level Elev. 3693.8	Producing Formation Queen		Pool Eumont; Yates-7 Rvrs-Queen (Pro Gas)		Dedicated Acreage: 160 Acres

1. Outline the acreage dedicated to the subject well by colored pencil or hatchure marks on the plat below.
2. If more than one lease is dedicated to the well, outline each and identify the ownership thereof (both as to working interest and royalty).
3. If more than one lease of different ownership is dedicated to the well, have the interest of all owners been consolidated by communitization, unitization, force-pooling, etc.?  
☐ Yes ☐ No If answer is "yes" type of consolidation \_\_\_\_\_  
If answer is "no" list the owners and tract descriptions which have actually been consolidated. (Use reverse side of this form if necessary.) \_\_\_\_\_  
No allowable will be assigned to the well until all interests have been consolidated (by communitization, unitization, forced-pooling, or otherwise) or until a non-standard unit, eliminating such interest, has been approved by the Division.

OPERATOR CERTIFICATION

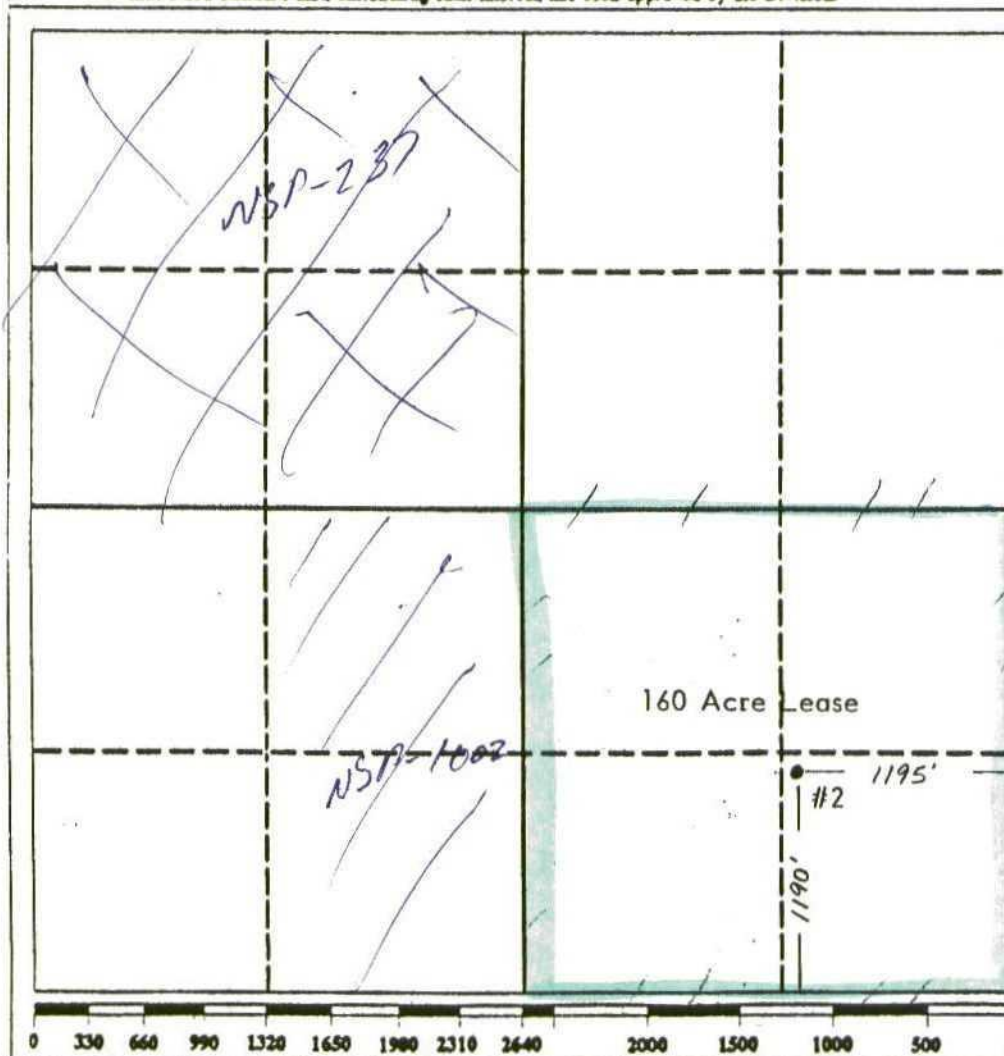
I hereby certify that the information contained herein is true and complete to the best of my knowledge and belief.

Signature Linda Johnston  
Printed Name  
Linda Johnston  
Position  
Agent  
Company  
Morexco, Inc.  
Date  
6/12/95

SURVEYOR CERTIFICATION

I hereby certify that the well location shown on this plat was plotted from field notes of actual surveys made by me or under my supervision, and that the same is true and correct to the best of my knowledge and belief.

Date Surveyed \_\_\_\_\_  
Signature & Seal of Professional Surveyor \_\_\_\_\_  
Certificate No. \_\_\_\_\_



Submit to Appropriate  
District Office  
State Lease - 4 copies  
Fee Lease - 3 copies

State of New Mexico  
Energy, Minerals and Natural Resources Department

Form C-102  
Revised 1-1-89

**OIL CONSERVATION DIVISION**

P.O. Box 2088  
Santa Fe, New Mexico 87504-2088

**DISTRICT I**

P.O. Box 1980, Hobbs, NM 88240

**DISTRICT II**

P.O. Drawer DD, Artesia, NM 88210

**DISTRICT III**

1000 Rio Brazos Rd., Aztec, NM 87410

**WELL LOCATION AND ACREAGE DEDICATION PLAT**

All Distances must be from the outer boundaries of the section

Operator <b>Morexco, Inc.</b>			Lease <b>Holt, J. R. A</b>		Well No. <b>1</b>
Unit Letter <b>G</b>	Section <b>5</b>	Township <b>19S</b>	Range <b>37E</b>	County <b>NMPM</b>	<b>Lea</b>
Actual Footage Location of Well: <b>1980</b> feet from the <b>North</b> line and <b>1980</b> feet from the <b>East</b> line of <b>Sec. 5</b>					
Ground level Elev. <b>3695</b>	Producing Formation <b>Queen</b>		Pool <b>Eumont; Yates-7 Rvrs-Queen (Pro Gas)</b>		Dedicated Acreage: <b>80 Acres</b>

- Outline the acreage dedicated to the subject well by colored pencil or hachure marks on the plat below.
- If more than one lease is dedicated to the well, outline each and identify the ownership thereof (both as to working interest and royalty).
- If more than one lease of different ownership is dedicated to the well, have the interest of all owners been consolidated by communitization, unitization, force-pooling, etc.?  
☐ Yes ☐ No If answer is "yes" type of consolidation \_\_\_\_\_  
If answer is "no" list the owners and tract descriptions which have actually been consolidated. (Use reverse side of this form if necessary.) \_\_\_\_\_  
No allowable will be assigned to the well until all interests have been consolidated (by communitization, unitization, forced-pooling, or otherwise) or until a non-standard unit, eliminating such interest, has been approved by the Division.



**OPERATOR CERTIFICATION**

I hereby certify that the information contained herein is true and complete to the best of my knowledge and belief.

Signature *Linda Johnston*  
Printed Name **Linda Johnston**  
Position **Agent**  
Company **Morexco, Inc.**  
Date **6/12/95**

**SURVEYOR CERTIFICATION**

I hereby certify that the well location shown on this plat was plotted from field notes of actual surveys made by me or under my supervision, and that the same is true and correct to the best of my knowledge and belief.

Date Surveyed \_\_\_\_\_  
Signature & Seal of Professional Surveyor \_\_\_\_\_  
Certificate No. \_\_\_\_\_



OIL CONSERVATION COMMISSION  
P. O. BOX 871  
SANTA FE, NEW MEXICO

October 25, 1957

C  
O  
P  
Y  
  
Gulf Oil Corporation  
P. O. Drawer 1290  
Fort Worth 1, Texas

Attention: B. E. Thompson

Administrative Order MSP-397

Gentlemen:

Reference is made to your application for approval of a 240-acre non-standard gas proration unit in the Eumont Gas Pool consisting of the following acreage:

Township 19 South, Range 37 East  
Section 5: SE/4 and S/2 NE/4

It is understood that this unit is to be ascribed to your J. R. Holt "C" Well No. 1, located 1980 feet from the North line and 1980 feet from the East line of said Section 5.

By authority granted me under provisions of Rule 5, Section (b) of the Special Rules and Regulations for the Eumont Gas Pool, as set forth in Order R-520, you are hereby authorized to operate the above described acreage as a non-standard gas proration unit, with allowable to be assigned thereto in accordance with Rule 12 of the pool rules, based upon the unit size of 240 acres.

Very truly yours,

A. L. PORTER, Jr.  
Secretary-Director

DSN:omg

cc: Oil Conservation Commission - Hobbs  
New Mexico Oil & Gas Engineering Committee  
El Paso Natural Gas - Jal  
El Paso Natural Gas - El Paso  
New Mexico State Land Office- (Mrs. Rhea)