

# Getty Oil Company

RECEIVED

~~Southwest Division~~ NORTH AMERICAN EXPLORATION AND PRODUCTION

DEC 22 1971

P. O. Box 249  
Hobbs, New Mexico 88240

OIL CONSERVATION COMM.  
SANTA FE

December 20, 1971

New Mexico Oil Conservation Commission  
P. O. Box 2088  
Santa Fe, New Mexico 87501

Re: Reclassification from Oil to Gas  
of Getty's State "S" No. 4  
Blinebry Field  
Lea County, New Mexico

Gentlemen:

The subject well has been reclassified from an oil well to a gas well. This lease contains five (5) Blinebry wells.

We respectfully request that this well be granted a non-standard gas proration unit in accordance with Rule 29 of Order No. R-1670 (Special Rules and Regulations for the Blinebry Gas Pool). We further request that the 40 acres, as outlined on the attached C-102, be allocated to this well.

The offset operators have been furnished with copies of this letter with attachments.

Very truly yours,  
GETTY OIL COMPANY

*C. L. Wade*  
C. L. Wade  
Area Superintendent

EJM/bh

ATTACHMENTS

Orig. & 2 CC: NMOCC - Santa Fe  
1 C: NMOCC - Hobbs  
1 C: Getty - Midland  
1 C: Continental Oil Company - Hobbs  
1 C: Humble - Andrews  
1 C: Gulf - Hobbs  
1 C: Cities Service - Hobbs  
1 C: Shell - Hobbs  
1 C: Aztec - Hobbs  
1 C: File

NEW MEXICO OIL CONSERVATION COMMISSION  
WELL LOCATION AND ACREAGE DEDICATION PLAT

RECEIVED

Form C-102  
Supersedes C-128  
Effective 1-1-65

DEC 22 1971

All distances must be from the outer boundaries of the Section.

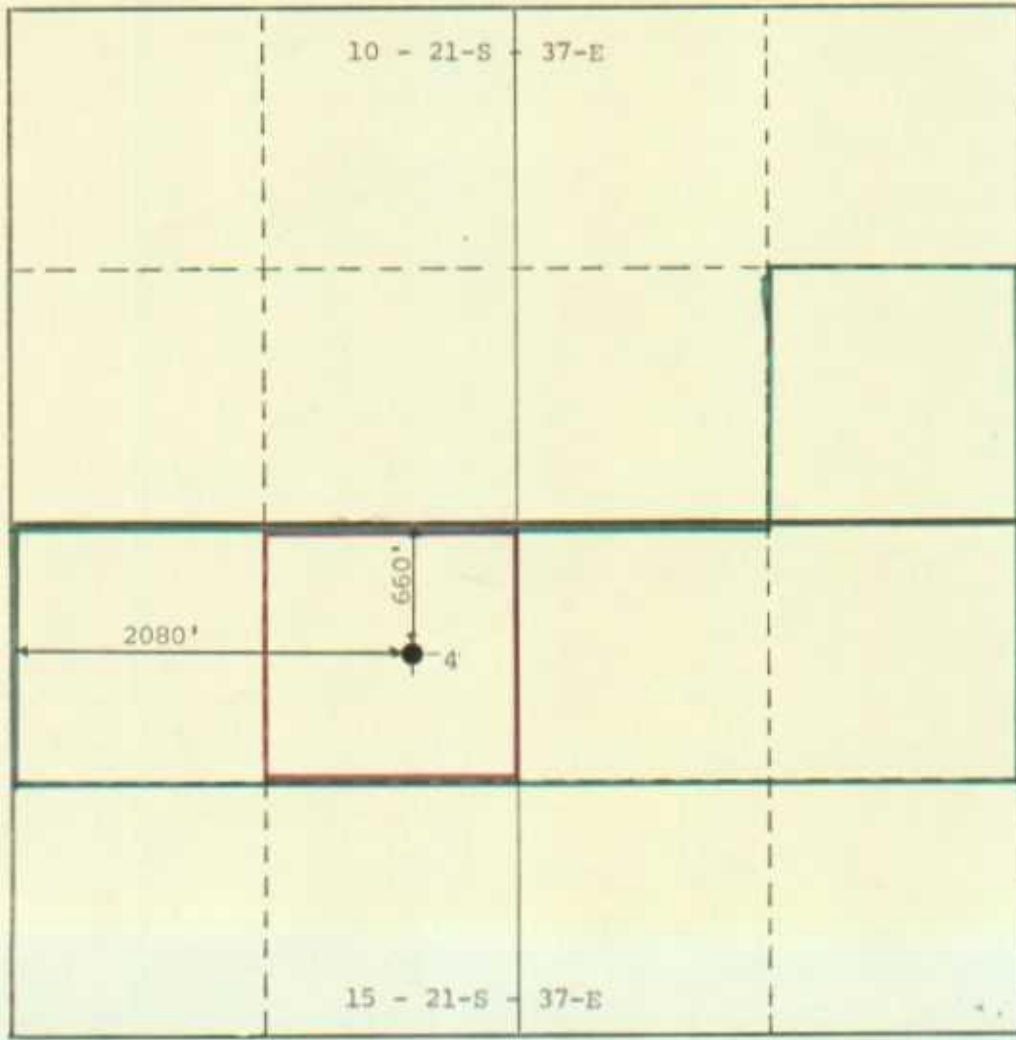
Operator GETTY OIL COMPANY			Lease STATE "S"		OIL CONSERVATION COM. SANTA FE	Well No. 4
Unit Letter C	Section 15	Township 21-S	Range 37-E	County LEA		
Actual Footage Location of Well: 660 feet from the NORTH line and 2080 feet from the WEST line						
Ground Level Elev. 3459 DF	Producing Formation BLINEBRY		Pool BLINEBRY		Dedicated Acreage 40 Acres	

- Outline the acreage dedicated to the subject well by colored pencil or hachure marks on the plat below.
- If more than one lease is dedicated to the well, outline each and identify the ownership thereof (both as to working interest and royalty).
- If more than one lease of different ownership is dedicated to the well, have the interests of all owners been consolidated by communitization, unitization, force-pooling, etc?

Yes  No If answer is "yes;" type of consolidation \_\_\_\_\_

If answer is "no," list the owners and tract descriptions which have actually been consolidated. (Use reverse side of this form if necessary.) \_\_\_\_\_

No allowable will be assigned to the well until all interests have been consolidated (by communitization, unitization, forced-pooling, or otherwise) or until a non-standard unit, eliminating such interests, has been approved by the Commission.



CERTIFICATION

I hereby certify that the information contained herein is true and complete to the best of my knowledge and belief.

*C. L. Wade*

Name  
C. L. Wade

Position  
AREA SUPERINTENDENT

Company  
GETTY OIL COMPANY

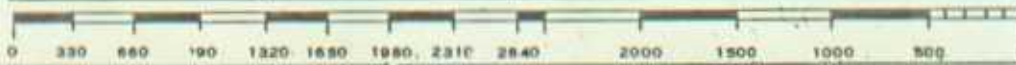
Date  
DECEMBER 21, 1971

I hereby certify that the well location shown on this plat was plotted from field notes of actual surveys made by me or under my supervision, and that the same is true and correct to the best of my knowledge and belief.

Date Surveyed

Registered Professional Engineer and/or Land Surveyor

Certificate No.



# Getty Oil Company

RECEIVED

DEC 22 1971

~~SOUTHWESTERN DIVISION~~

NORTH AMERICAN EXPLORATION AND PRODUCTION

OIL CONSERVATION COMM.  
SANTA FE

P. O. Box 249  
Hobbs, New Mexico 88240

December 20, 1971

New Mexico Oil Conservation Commission  
P. O. Box 2088  
Santa Fe, New Mexico 87501

Re: Reclassification from Oil to Gas  
of Getty's State "S" No. 4  
Blinebry Field  
Lea County, New Mexico

Gentlemen:

The subject well has been reclassified from an oil well to a gas well.  
This lease contains five (5) Blinebry wells.

We respectfully request that this well be granted a non-standard gas  
proration unit in accordance with Rule 29 of Order No. R-1670 (Special Rules and  
Regulations for the Blinebry Gas Pool). We further request that the 40 acres,  
as outlined on the attached C-102, be allocated to this well.

The offset operators have been furnished with copies of this letter with  
attachments.

Very truly yours,  
GETTY OIL COMPANY  
Original Signed By  
C. L. Wade  
C. L. Wade  
Area Superintendent

EJM/bh

## ATTACHMENTS

Orig. & 2 CC: NMOCC - Santa Fe  
1 C: NMOCC - Hobbs  
1 C: Getty - Midland  
1 C: Continental Oil Company - Hobbs  
1 C: Humble - Andrews  
1 C: Gulf - Hobbs  
1 C: Cities Service - Hobbs  
1 C: Shell - Hobbs  
1 C: Aztec - Hobbs  
1 C: File