

Getty Oil Company

Row
NSP 854
name 1-21-72
120 acres
SW 1/4 NW 1/4 and E 1/2 NW 1/4
~~SOUTHERN DISTRICT~~

NORTH AMERICAN EXPLORATION AND PRODUCTION

RECEIVED

DEC 22 1971

P. O. Box 249
Hobbs, New Mexico 88240
OIL CONSERVATION COMM.
SANTA FE

December 20, 1971

New Mexico Oil Conservation Commission
P.O. Box 2088
Santa Fe, New Mexico 87501

Re: Reclassification from Oil to Gas
of Getty's S. J. Sarkeys' Nos. 3 & 4
Blinebry Field, Lea County, New Mexico

Gentlemen:

The subject wells have been reclassified from oil wells to gas wells.
This lease contains four (4) Blinebry wells.

We respectfully request that these wells be granted a non-standard gas proration unit in accordance with Rule 29 of Order No. R-1670 (Special Rules and Regulations for the Blinebry Gas Pool). We further request that the 120 acres, as outlined on the attached C-102, be allocated to these wells. Well No. 1 will be shut-in.

The offset operators have been furnished with copies of this letter with attachments.

Very truly yours,
GETTY OIL COMPANY

C. L. Wade
C. L. Wade
Area Superintendent

EJM/bh
ATTACHMENTS

Orig. & 2 CC: NMOCC - Santa Fe
1 C: NMOCC - Hobbs
1 C: Getty Oil Company - Midland
1 C: Acoma - 812 Continental Life Bldg., Ft. Worth, Texas 71102
1 C: Atlantic Richfield - Hobbs
1 C: Shell Oil Company - Hobbs
1 C: Humble Oil & Refining - Andrews
1 C: Gulf - Hobbs
1 C: Texas Pacific - Hobbs
1 C: File

NEW MEXICO OIL CONSERVATION COMMISSION
WELL LOCATION AND ACREAGE DEDICATION PLAT

Form C-102
Supersedes C-128
Effective 1-1-65

All distances must be from the outer boundaries of the Section.

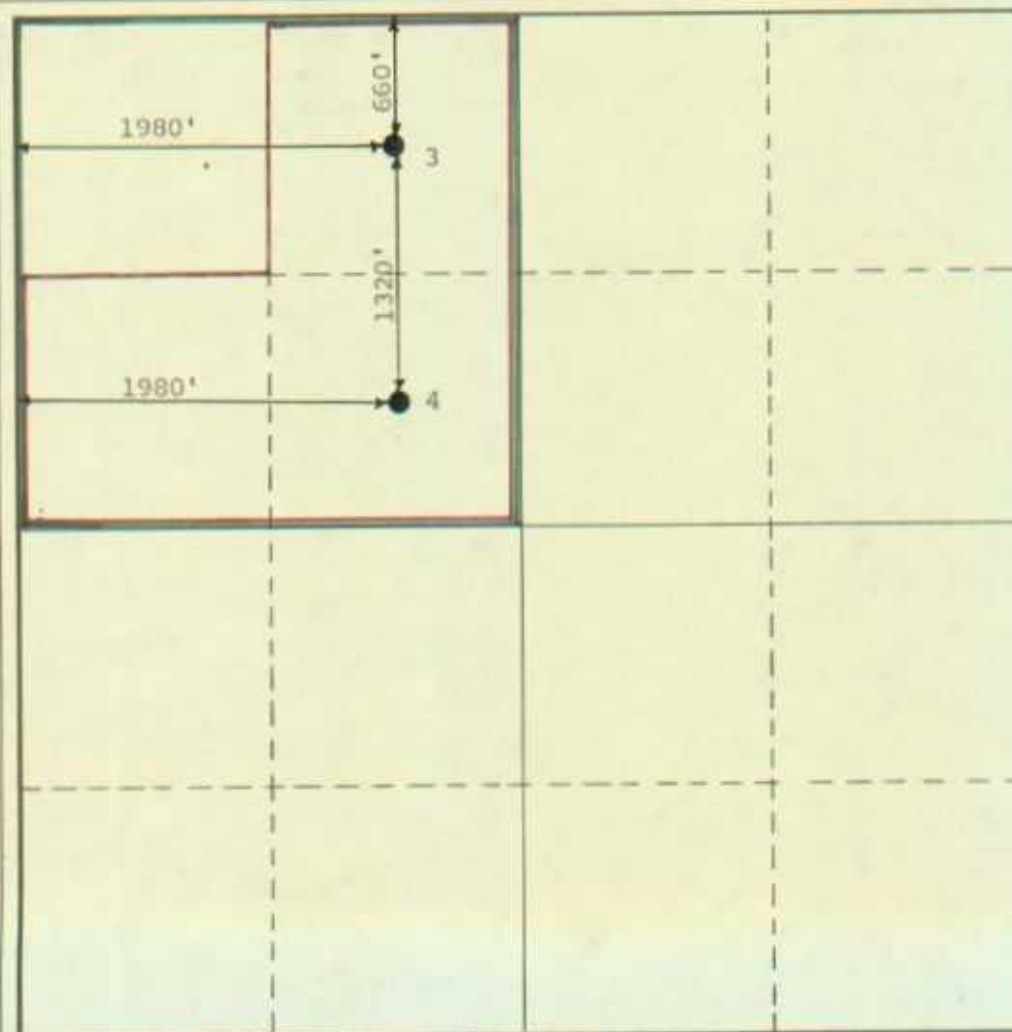
Operator GETTY OIL COMPANY				Lease S. J. SARKEYS		Well No. 3 & 4	
Unit Letter #3 C #4 F	Section 26 26	Township 21-S 21-S	Range 37-E 37-E	County SANTA FE LEA			
Actual Footage Location of Well: #3 660 #4 1980 feet from the NORTH line and 1980 feet from the WEST line							
Ground Level Elev. #3 KDB 3399' #4 DF 3396'		Producing Formation BLINEBRY		Pool BLINEBRY		Dedicated Acreage: 120 Acres	

1. Outline the acreage dedicated to the subject well by colored pencil or hachure marks on the plat below.
2. If more than one lease is dedicated to the well, outline each and identify the ownership thereof (both as to working interest and royalty).
3. If more than one lease of different ownership is dedicated to the well, have the interests of all owners been consolidated by communitization, unitization, force-pooling, etc?

☐ Yes ☐ No If answer is "yes," type of consolidation _____

If answer is "no," list the owners and tract descriptions which have actually been consolidated. (Use reverse side of this form if necessary.) _____

No allowable will be assigned to the well until all interests have been consolidated (by communitization, unitization, forced-pooling, or otherwise) or until a non-standard unit, eliminating such interests, has been approved by the Commission.



CERTIFICATION

I hereby certify that the information contained herein is true and complete to the best of my knowledge and belief.

C. L. Wade

Name

C. L. Wade

Position

AREA SUPERINTENDENT

Company

GETTY OIL COMPANY

Date

DECEMBER 21, 1971

I hereby certify that the well location shown on this plat was plotted from field notes of actual surveys made by me or under my supervision, and that the same is true and correct to the best of my knowledge and belief.

Date Surveyed

Registered Professional Engineer and/or Land Surveyor

Certificate No.

