

PHONE (505) 623-6601

HEYCO

PETROLEUM PRODUCERS



HARVEY E. YATES COMPANY, INC.

SUITE 1000 SECURITY NATIONAL BANK BUILDING

ROSWELL, NEW MEXICO 88201

Post Office Box 1933

December 7, 1977

State of New Mexico
Oil Conservation Commission
Post Office Box 2088
Santa Fe, New Mexico 87501

Attention: Mr. Joe D. Ramey
Secretary-Director

Re: Travis Bassett-Birney #1
Sec. 7, T-18S, R-29E
Eddy County, New Mexico

Gentlemen:

Enclosed please find three signed copies of Form C-102 on the above captioned location.

Inasmuch as this is an irregular subdivision containing less than 320 acres because of the lots on the west side of the section, we hereby request administrative approval for a non-standard gas unit.

Very truly yours,

Fred G. Yates
Fred G. Yates

FGY:amp
Enclosures

NSP-1077

LEC-7107

Dul
1-9-78

NSP 4
104 C.II
Ref 10-1 D.II

301.15-11-11-11
7-18-11-11
S. Encl re Field

**NEW MEXICO OIL CONSERVATION COMMISSION
WELL LOCATION AND ACREAGE DEDICATION PLAT**

Form C-102
Supersedes C-128
Effective 1-1-65

All distances must be from the outer boundaries of the Section.

Operator Harvey E. Yates Company			Lease Travis Bassett-Birney		
Unit Letter J	Section 7	Township 18S	Range 29E	County Eddy	

Actual Footage Location of Well:

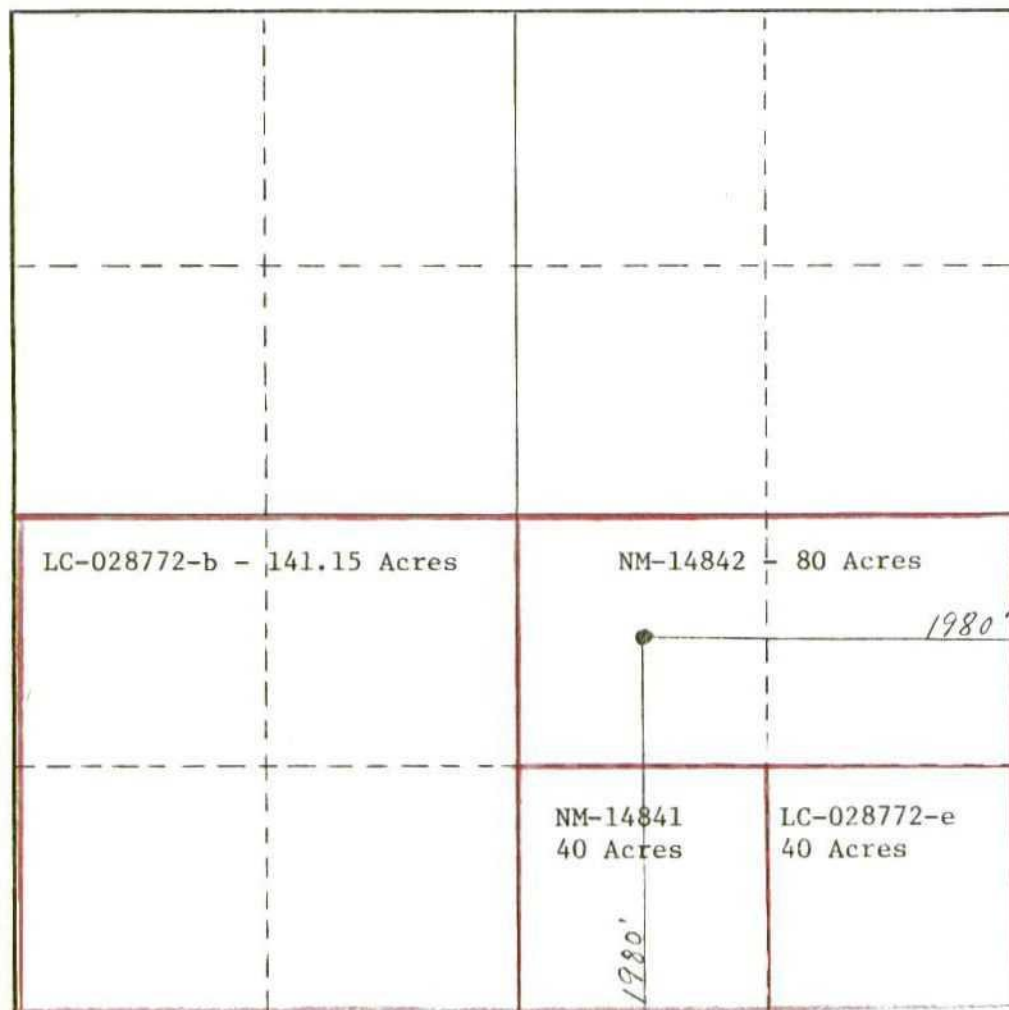
1980		feet from the	South	line and	1980	feet from the	East	line
Ground Level Elev. 3573.9'	Producing Formation Morrow		Pool Wildcat		Dedicated Acreage: 301.15		Acres	

1. Outline the acreage dedicated to the subject well by colored pencil or hachure marks on the plat below.
2. If more than one lease is dedicated to the well, outline each and identify the ownership thereof (both as to working interest and royalty).
3. If more than one lease of different ownership is dedicated to the well, have the interests of all owners been consolidated by communitization, unitization, force-pooling, etc?

☒ Yes ☐ No If answer is "yes," type of consolidation Operating Agreement

If answer is "no," list the owners and tract descriptions which have actually been consolidated. (Use reverse side of this form if necessary.) _____

No allowable will be assigned to the well until all interests have been consolidated (by communitization, unitization, forced-pooling, or otherwise) or until a non-standard unit, eliminating such interests, has been approved by the Commission.



CERTIFICATION

I hereby certify that the information contained herein is true and complete to the best of my knowledge and belief.

Name Anne M. Pope
 Position Administrative Assistant
 Company Harvey E. Yates Company
 Date December 7, 1977

I hereby certify that the well location shown on this plat was plotted from field notes of actual surveys made by me or under my supervision, and that the same is true and correct to the best of my knowledge and belief.

Date Surveyed _____
 Registered Professional Engineer and/or Land Surveyor _____

Certificate No. _____