

NSP 17271
Rule 104 D II
No waiting

October 12, 1981

Re: Administrative Approval
Non-Standard Unit for Morrow (Gas)
Conoco "7" State Well No. 10
Unit F, Sec. 7, T19S, R29E, NMPM
Undes. Turkey Track (Morrow) Field
Eddy County, New Mexico

State of New Mexico
Energy & Minerals Department (2)
Oil Conservation Division
P. O. Box 2088
Santa Fe, New Mexico 87501

Energy & Minerals Department (2)
Oil Conservation Division
P. O. Drawer DD
Artesia, New Mexico 88210

Attn: Mr. Joe D. Ramey

Attn: Mr. W. A. Gressett

Gentlemen:

Threshold Development Company respectfully requests administrative approval on a non-standard unit for the subject well. The north half of Section 7, T19S, R29E, consisting of 305.45 acres, is dedicated to this proration unit in its entirety. The unorthodox size of the unit is necessitated by a variation in the legal subdivision of the U. S. Public Land Surveys. See attached plat.

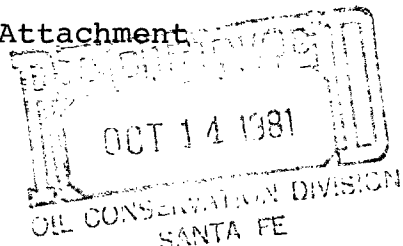
Very truly yours,

Peggy A. Redman

Peggy A. Redman
Engineer Assistant

pr

Attachment

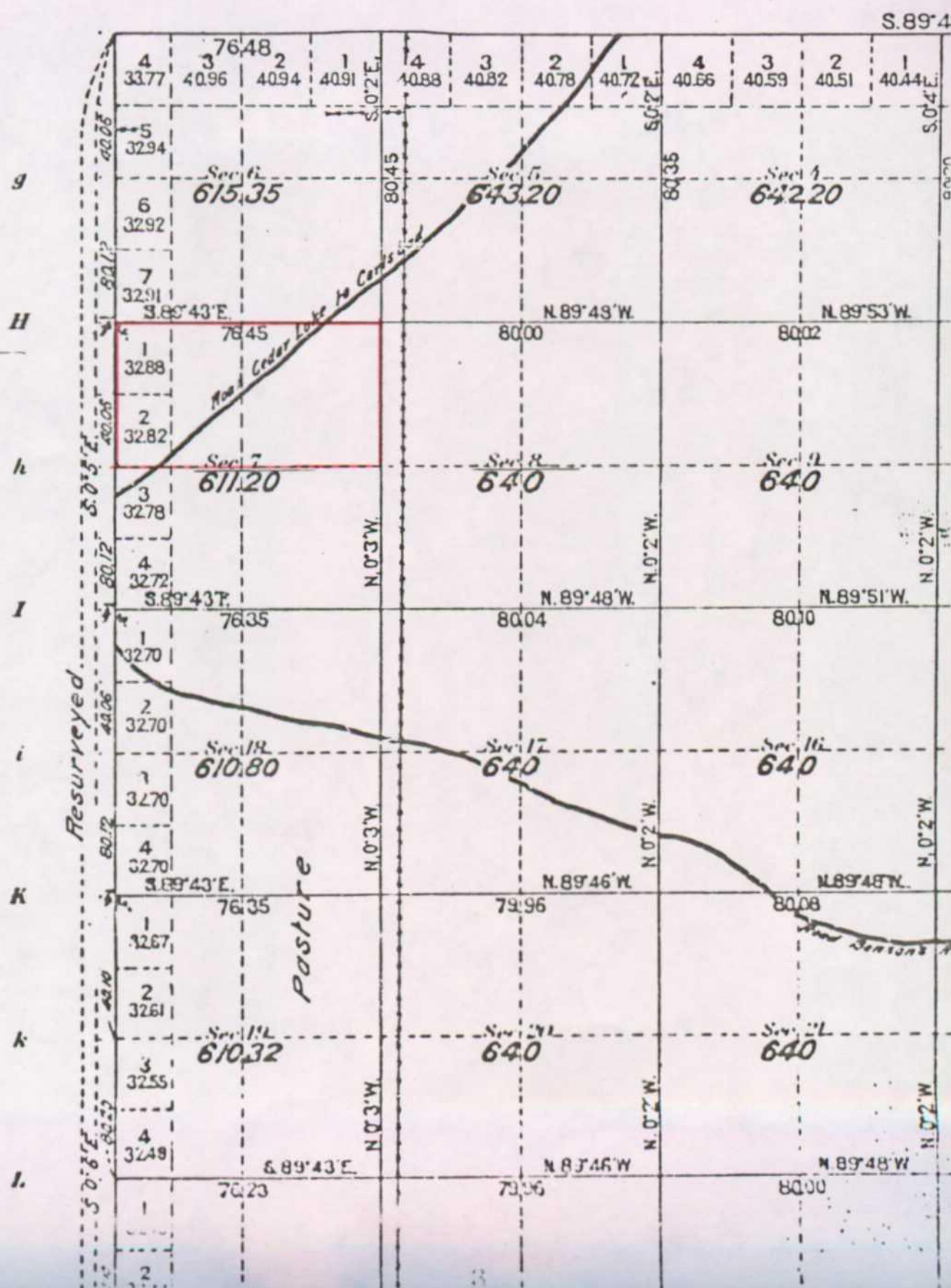


THRESHOLD DEVELOPMENT COMPANY

1400 Gihls Tower West Midland, TX 79701 Telephone 915 682-5640

Township N^o 19 South, Range N^o 29 E

G *f* *F* *e* *E* *d* *D*



NEW MEXICO OIL CONSERVATION COMMISSION
WELL LOCATION AND ACREAGE DEDICATION PLAT

Form C-102
Supersedes C-128
Effective 1-1-65

All distances must be from the outer boundaries of the Section.

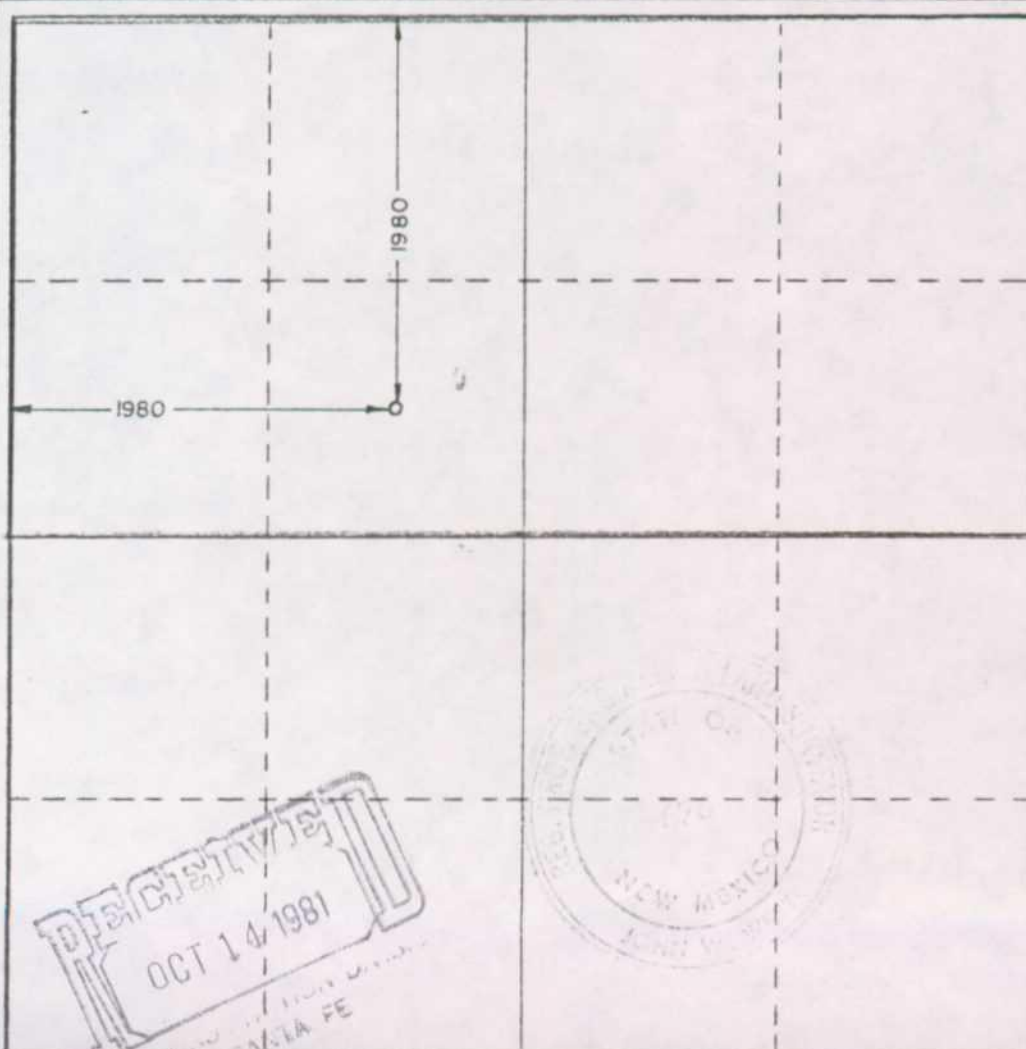
Operator Threshold Development Co.			Lease Conoco 70 State			Well No. 10
Unit Letter F	Section 7	Township 19 south	Range 29 east	County Eddy		
Actual Footage Location of Well: 1980 feet from the north line and 1980 feet from the west line						
Ground Level Elev. 3376.7	Producing Formation Morrow		Pool Undes. Turkey Track		Dedicated Acreage: 305.45 Acres	

1. Outline the acreage dedicated to the subject well by colored pencil or hachure marks on the plat below.
2. If more than one lease is dedicated to the well, outline each and identify the ownership thereof (both as to working interest and royalty).
3. If more than one lease of different ownership is dedicated to the well, have the interests of all owners been consolidated by communitization, unitization, force-pooling, etc?

☒ Yes ☐ No If answer is "yes," type of consolidation By Operating Agreement will be communitized upon establishment of production.

If answer is "no," list the owners and tract descriptions which have actually been consolidated. (Use reverse side of this form if necessary.)

No allowable will be assigned to the well until all interests have been consolidated (by communitization, unitization, forced-pooling, or otherwise) or until a non-standard unit, eliminating such interests, has been approved by the Commission.



CERTIFICATION

I hereby certify that the information contained herein is true and complete to the best of my knowledge and belief.

Name Peggy A. Redman
Position Engineer Assistant
Company Threshold Development Co.
Date September 18, 1981

I hereby certify that the well location shown on this plat was plotted from field notes of actual surveys made by me or under my supervision, and that the same is true and correct to the best of my knowledge and belief.

Date Surveyed 9-15-80

Registered Professional Engineer and/or Land Surveyor

Patrick A. Romero

Certificate No. JOHN W. WEST 676
PATRICK A. ROMERO 6663
Ronald J. Edison 3239

0 330 660 990 1320 1650 1980 2310 2640 2970 3300 3630 3960 4290 4620 4950 5280 5610 5940 6270 6600