

# Gulf Oil Exploration and Production Company

R. C. Anderson  
PRODUCTION MANAGER,  
HOBBS AREA

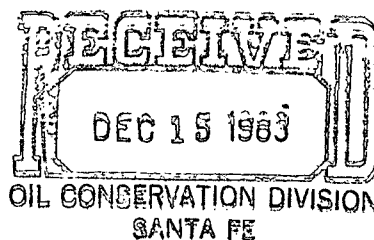
December 12, 1983

P. O. Box 670  
Hobbs, NM 88240

Re: Application for a 120-Acre Non-Standard Gas Proration Unit, Tubb Oil & Gas Pool Comprising the NW/4 of NE/4 & S/2 of NE/4 of Section 3-T22S-R37E, Lea County, New Mexico

NSP 1409  
Rule 5C Order No. R-1670  
Jan. 14, 1983

Joe D. Ramey  
Oil Conservation Division  
P. O. Box 2088  
Santa Fe, New Mexico 87501



Gentlemen:

Gulf Oil Corporation requests administrative approval for a 120-Acre Non-Standard Gas Proration Unit in the Tubb Oil & Gas Pool, comprising the NW/4 of NE/4 & S/2 of NE/4 of Section 3-T22S-R37E, Lea County, New Mexico, to be assigned to Gulf's Mark #4 well. In support thereof, Gulf Oil Corporation states the following facts:

1. The proposed Non-Standard Gas Proration Unit will meet the requirements of Rulf 5(c) of the Oil Conservation Division Order No. R-1670 as follows:
  - a. The proposed Non-Standard 120-Acre Proration Unit consists of less acreage than a standard 160-acre proration unit.
  - b. The Non-Standard Gas 120-Acre Proration Unit consists of contiguous quarter-quarter sections.
  - c. The Non-Standard 120-Acre Proration Unit lies wholly within a single government section in the Tubb Oil & Gas Pool with 160-acre standard proration units.
  - d. The entire Non-Standard 120-Acre Gas Proration Unit may be reasonably presumed to be productive of gas from the Eumont Pool.
  - e. The length or width of the Non-Standard Gas Proration Unit does not exceed 5280 feet.
  - f. This letter will serve as notification to all operators owning interest in the section containing the proposed Non-Standard 120-Acre Proration Unit and all operators within 1500 feet of the Mark #4 well.



In view of the above facts, Gulf Oil Corporation requests that administrative approval of the subject 120-Acre Non-Standard Proration Unit be granted.

Yours very truly,



R. C. ANDERSON

DCE/skc

cc: Oil Conservation Division  
P. O. Box 1980  
Hobbs, New Mexico 88240

REGISTERED MAIL - RETURN RECEIPT REQUESTED:

Anadarko  
P. O. Box 2497  
Midland, Texas 79702

Amoco  
P. O. Box 58  
Hobbs, New Mexico 88240

Cities Service Co.  
P. O. Box 1919  
Midland, Texas 79702

Exxon  
P. O. Box 1600  
Midland, Texas 79702

Sun Oil Co.  
901 W. Wall  
Midland, Texas 79702

Marathon Oil Co.  
P. O. Box 552  
Midland, Texas 79702

ARCO Oil & Gas  
P. O. Box 1610  
Midland, Texas 79702

NEW MEXICO OIL CONSERVATION COMMISSION  
WELL LOCATION AND ACREAGE DEDICATION PLAT

Form C-102  
Supersedes C-128  
Effective 1-4-85

All distances must be from the outer boundaries of the Section.

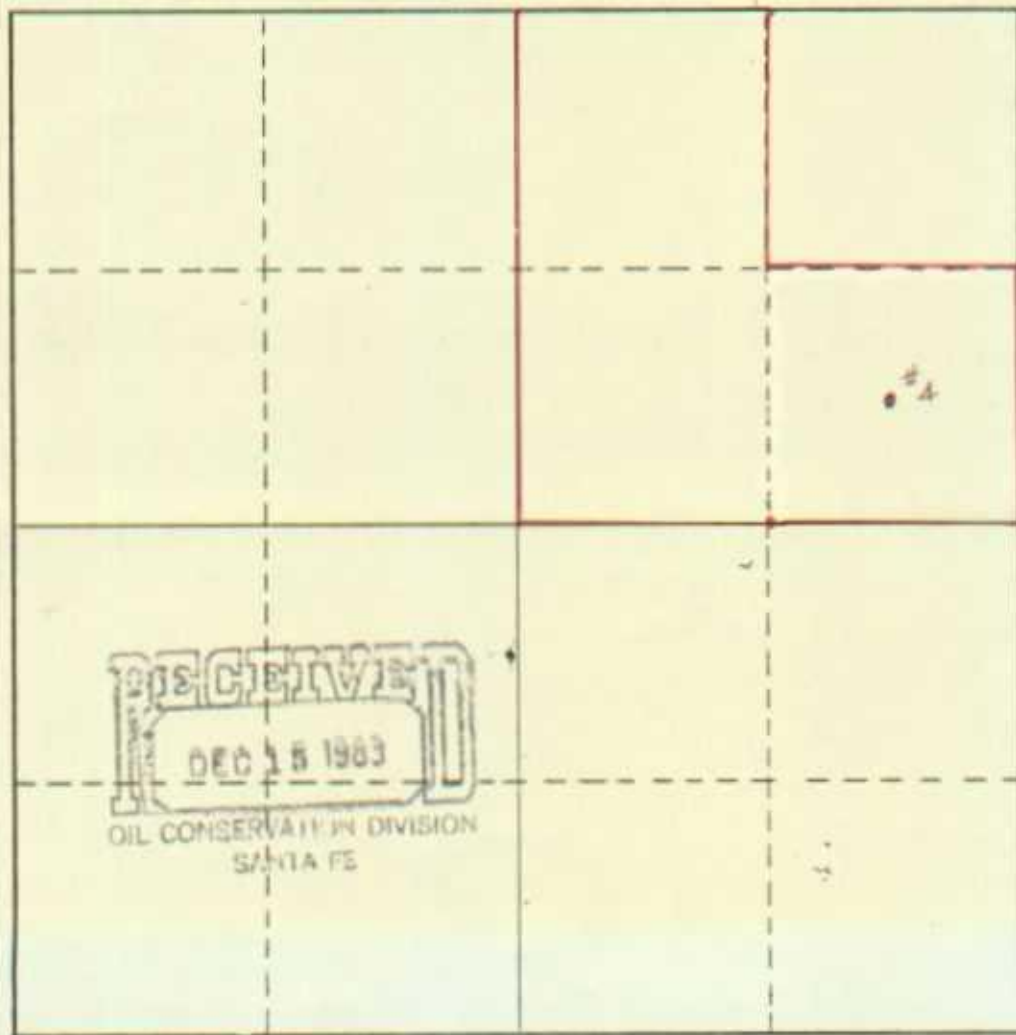
Operator <i>Gulf Oil Corp.</i>			Lease <i>Mark</i>		Well No. <i>4</i>
Unit Letter <i>H</i>	Section <i>3</i>	Township <i>22S</i>	Range <i>37E</i>	County <i>Lea</i>	
Actual Footage Location of Well: <i>1980</i> feet from the <i>North</i> line and <i>660</i> feet from the <i>East</i> line					
Ground Level Elev. <i>3397'</i>	Producing Formation <i>Jubla</i>		Pool <i>Jubla Gas</i>	Dedicated Acreage <i>1.20</i> Acres	

1. Outline the acreage dedicated to the subject well by colored pencil or hachure marks on the plat below.
2. If more than one lease is dedicated to the well, outline each and identify the ownership thereof (both as to working interest and royalty).
3. If more than one lease of different ownership is dedicated to the well, have the interests of all owners been consolidated by communitization, unitization, force-pooling, etc?

Yes  No If answer is "yes," type of consolidation \_\_\_\_\_

If answer is "no," list the owners and tract descriptions which have actually been consolidated. (Use reverse side of this form if necessary.) \_\_\_\_\_

No allowable will be assigned to the well until all interests have been consolidated (by communitization, unitization, forced-pooling, or otherwise) or until a non-standard unit, eliminating such interests, has been approved by the Commission.



RECEIVED  
DEC 15 1983  
OIL CONSERVATION DIVISION  
SANTA FE

CERTIFICATION

I hereby certify that the information contained herein is true and complete to the best of my knowledge and belief.

*R.D. Pitre*

Name  
*R.D. PITRE*  
Position  
*AREA ENGINEER*  
Company  
*GULF OIL CORP*  
Date  
*12-9-83*

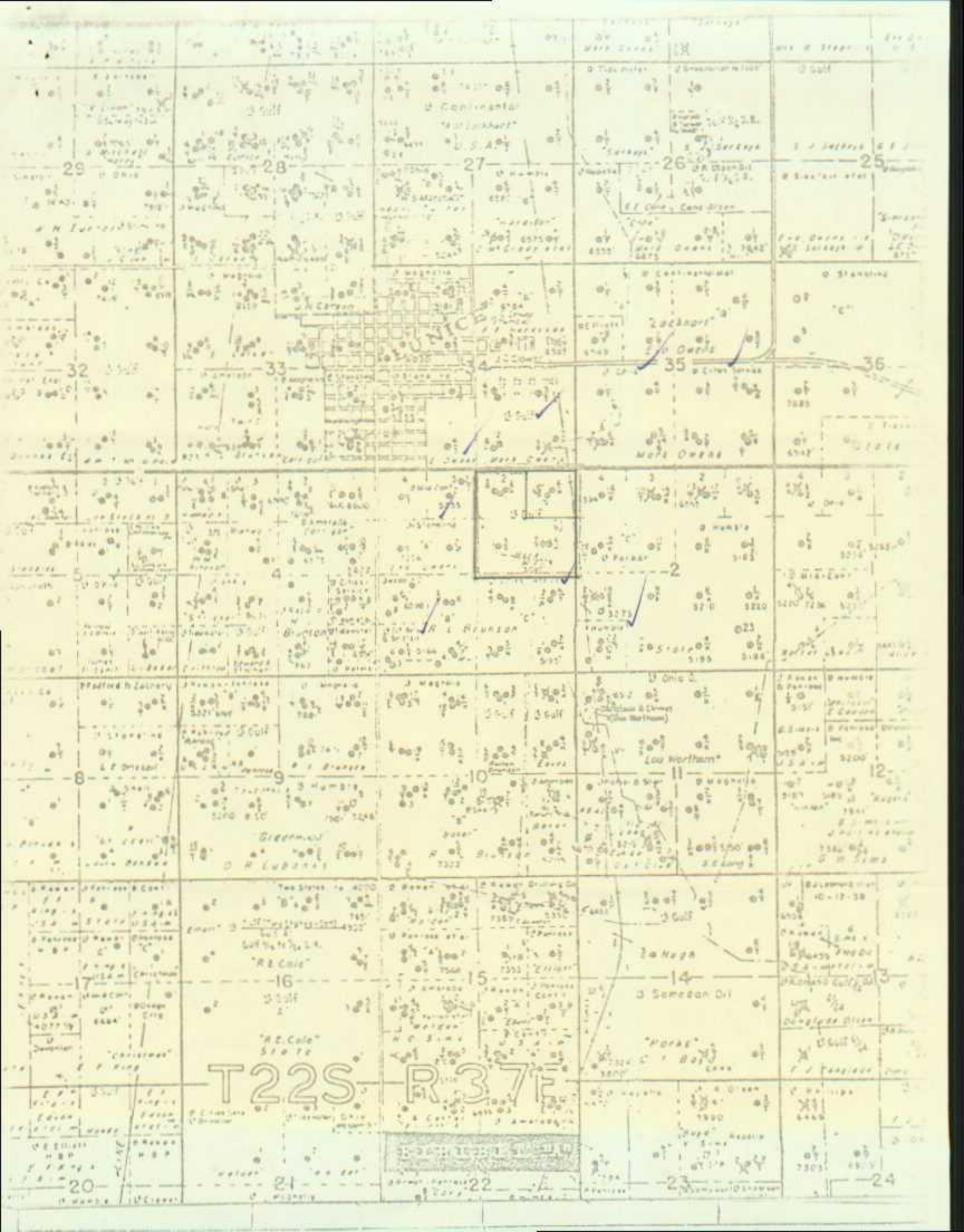
I hereby certify that the well location shown on this plat was plotted from field notes of actual surveys made by me or under my supervision, and that the same is true and correct to the best of my knowledge and belief.

Date Surveyed  
  
Registered Professional Engineer and/or Land Surveyor

Certificate No.







T22S R37E

Greenwood

R2 Code

S10 T2

Lot 10

Section 10

Section 9

Section 8

Section 7

Section 6

Section 5

Section 4

Section 3

Section 2

Section 1

Section 36

Section 35

Section 34

Section 33

Section 32

Section 27

Section 26

Section 25

Section 24

Section 23

Section 22

Section 21

Section 20

Section 19

Section 18

Section 17

Section 16

Section 15

Section 14

Section 13

Section 12

Section 11

Section 10

Section 9

Section 8

Section 7

Section 6

Section 5

Section 4

Section 3

Section 2

Section 1

Section 36

Section 35

Section 34

Section 33

Section 32

Section 31

Section 30

Section 29

Section 28

Section 27

Section 26

Section 25

Section 24

Section 23

Section 22

Section 21

Section 20

Section 19

Section 18

Section 17

Section 16

Section 15

Section 14

Section 13

Section 12

Section 11

Section 10

Section 9

Section 8

Section 7

Section 6

Section 5

Section 4

Section 3

Section 2

Section 1

Section 36

Section 35

Section 34

Section 33

Section 32

Section 24

Section 23

Section 22

Section 21

Section 20

Section 19

Section 18

Section 17

Section 16

Section 15

Section 14

Section 13

Section 12

Section 11

Section 10

Section 9

Section 8

Section 7

Section 6

Section 5

Section 4

Section 3

Section 2

Section 1

Section 36

Section 35

Section 34

Section 33

Section 32

Section 24

Section 23

Section 22

Section 21

Section 20

Section 19

Section 18

Section 17

Section 16

Section 15

Section 14

Section 13

Section 12

Section 11

Section 10

Section 9

Section 8

Section 7

Section 6

Section 5

Section 4

Section 3

Section 2

Section 1

Section 36

Section 35

Section 34

Section 33

Section 32