



TONEY ANAYA
GOVERNOR

STATE OF NEW MEXICO
ENERGY AND MINERALS DEPARTMENT
OIL CONSERVATION DIVISION
HOBBS DISTRICT OFFICE

May 26, 1986

POST OFFICE BOX 1990
HOBBS, NEW MEXICO 88240
(505) 393-6161

OIL CONSERVATION DIVISION
P. O. BOX 2038
SANTA FE, NEW MEXICO 87501

RE: Proposed:

| | |
|----------|----|
| MC | |
| DHC | |
| NSL & SD | XX |
| NSP | XX |
| SWD | |
| WFX | |
| PMX | |

Gentlemen:

I have examined the application for the:

| | | | |
|-------------------------------|------------------|---------|-------------------------|
| BHP Petroleum (Americas) Inc. | Bledsoe #2-A | 11-6-33 | &(Bledsoe #1-H-11-6-33) |
| Operator | Lease & Well No. | Unit | S-T-R |

and my recommendations are as follows:

OK -- Jerry Sexton

This well was at a standard location for an oil well in

the South Peterson Penn Associated but requires the approval

of a non-standard location due to the recently submitted
gas/oil ratio test which will reclassify it to a gas well.

Also, approval of 160 acre Non-standard Proration is required.

Yours very truly,

Jerry Sexton
Jerry Sexton
Supervisor, District 1

/mc

NEW MEXICO OIL CONSERVATION COMMISSION GAS-OIL RATIO TESTS

Revised 1-1-65

Operator

BHP Petroleum (Americas) Inc.

Pool

Peterson Penn. Associated, South

County

Roosevelt

Address

P. O. Drawer 2437, Midland, Texas 79702

TYPE OF TEST - (X) Scheduled ☒ Special ☐

Completion ☐

Special ☐

| LEASE NAME | WELL NO. | LOCATION | | | | DATE OF TEST | SPLITS | CHOKE SIZE | TBG. PRESS. | DAILY ALLOW-ABLE | LENGTH OF TEST HOURS | PROD. DURING TEST | | | | GAS - OIL RATIO CU.FT./BBL. |
|---------------|----------|----------|----|----|-----|--------------|--------|------------|-------------|------------------|----------------------|-------------------|-----------|----------------|------------|-----------------------------|
| | | U | S | T | R | | | | | | | WATER BBLs. | GRAV. OIL | OIL TEST BBLs. | GAS M.C.F. | |
| Bledsoe | 1 | H | 11 | 6S | 33E | 2-15-86 | F | 10/64 | 45 | -0- | 24 | -0- | -0- | -0- | 7 | -0- |
| Bledsoe | 2 | A | 11 | 6S | 33E | 2-15-86 | P | 2" | 30 | 2 | 24 | 6 | 47 | 1.18 | 46 | 38,983 |
| EI Paso State | 1 | P | 8 | 6S | 34E | 2-15-86 | P | 2" | 75 | 36 | 24 | 10 | 51 | 17 | 49 | 2,882 |
| EI Paso State | 2 | J | 8 | 6S | 34E | 2-15-86 | F | 26/64 | 490 | -0- | 24 | -0- | 51 | 46 | 1418 | 30,826 |
| EI Paso State | 4 | H | 8 | 6S | 34E | 2-15-86 | P | 2" | 46 | 4 | 24 | 3 | 50 | 2 | 6 | 3,000 |
| Miller | 1 | M | 12 | 6S | 33E | 2-15-86 | F | 24/64 | 200 | -0- | 24 | 3 | 59 | 1 | 447 | 447,000 |
| Crume | 1 | C | 13 | 6S | 33E | 2-15-86 | F | 24/64 | 300 | -0- | 24 | 1 | 61 | 3 | 430 | 143,333 |
| State 17 | 1 | A | 17 | 6S | 34E | SI 11/26/85 | | | | | | | | | | |
| Lambirth | 1 | C | 18 | 6S | 34E | SI 01-01-86 | | | | | | | | | | |
| Markham | 1 | J | 17 | 6S | 34E | 2-15-86 | P | 2" | 46 | 14 | 24 | 39 | 48 | 7 | 21 | 3,000 |
| Boys Ranch | 1 | K | 17 | 6S | 34E | 2-15-86 | P | 2" | 46 | 12 | 24 | -0- | 48 | 5 | 86 | 17,200 |

No well will be assigned an allowable greater than the amount of oil produced on the official test.

During gas-oil ratio test, each well shall be produced at a rate not exceeding the top unit allowable for the pool in which well is located by more than 25 percent. Operator is encouraged to take advantage of this 25 percent tolerance in order that well can be assigned increased allowables when authorized by the Commission.

Gas volumes must be reported in MCF measured at a pressure base of 15.025 psia and a temperature of 60° F. Specific gravity base will be 0.60.

Report casing pressure in lieu of tubing pressure for any well producing through casing.

Mail original and one copy of this report to the district office of the New Mexico Oil Conservation Commission in accordance with Rule 301 and appropriate pool rules.

I hereby certify that the above information is true and complete to the best of my knowledge and belief.

Edward W. Wheeler
(Signature)
Operation Superintendent Production

3/6/86
(Date)



Sat Thomas 915-602-2000

STATE OF NEW MEXICO
ENERGY AND MINERALS DEPARTMENT
OIL CONSERVATION DIVISION
HOBBS DISTRICT OFFICE

TONEY ANAYA
GOVERNOR

March 19, 1986

POST OFFICE BOX 1980
HOBBS, NEW MEXICO 88240
(505) 393-6161

BHP Petroleum (Americas), Inc.
P.O. Drawer 2437
Midland, TX 79702

Re: Bledsoe #2-A
Section 11, T6S, R33E
Roosevelt County, NM

Gentlemen:

According to the gas-oil ratio test submitted on the above referenced well in the South Peterson Penn Associated Pool, the well will be reclassified from oil to gas effective May 1, 1986.

Due to this reclassification you will need to submit a revised acreage dedication plat (Form C-102) dedicating 320 acres to this gas well or obtain approval of a non-standard gas proration unit for this well.

Also, the location of well is at an unorthodox location for a gas well and you must secure administrative approval from our Santa Fe office of this unorthodox location. Your application for approval of this unorthodox location should be made according to the attached Rule 2 of Division Order R-5353 regulating associated pools.

Very truly yours,

OIL CONSERVATION DIVISION

Jerry Sexton
Supervisor, District I

ed

Attachment

May 7, 1986

RECEIVED
MAY 9 1986
OIL CONSERVATION DIVISION
SANTA FE, NM



BHP
Petroleum
(Americas) Inc

Oil Conservation Division
P. O. Box 2088
Santa Fe, New Mexico 87501

Re: Bledsoe #2-A
Section 11, T-6-S, R-33-E
Roosevelt County, New Mexico

Gentlemen:

By copy of attached letter, we have this date notified the offset operators of our request as outlined.

H. L. Brown, Jr. - Operator
Box 2237
Midland, TX 79702

Enserch Exploration Co.
The Summit Bldg.
Midland, Texas 79702

Sincerely,

Greg Lalicker
Petroleum Engineer

GL/nj
Attachment

xc: Oil Conservation
Hobbs, NM



May 5, 1986

Oil Conservation Division
P. O. Box 2088
Santa Fe, New Mexico 87501

Re: Bledsoe #2-A
Section 11, T-6-S, R-33-E
Roosevelt County, New Mexico

Gentlemen:

By this letter, BHP Petroleum (Americas) Inc. requests that the above referenced well be granted administrative approval for an unorthodox location and a non-standard (160 acre) proration unit. Also, BHP requests that this acreage be simultaneously assigned to the Bledsoe #1 so that this well may continue to produce until dead. Current rate from the Bledsoe #1 is only 7 MCFPD and this well will be plugged as soon as it stops producing altogether.

A plat showing the proration unit and wells is attached.

Sincerely,

A handwritten signature in dark ink, appearing to read "Greg Lalicker", written over the typed name.

Greg Lalicker
Petroleum Engineer

GL/nj
Attachment

cc: Oil Conservation
Hobbs, NM

NEW MEXICO OIL CONSERVATION COMMISSION
WELL LOCATION AND ACREAGE DEDICATION PLAT

Form C-102
Supersedes C-128
Effective 1-1-65

All distances must be from the outer boundaries of the Section

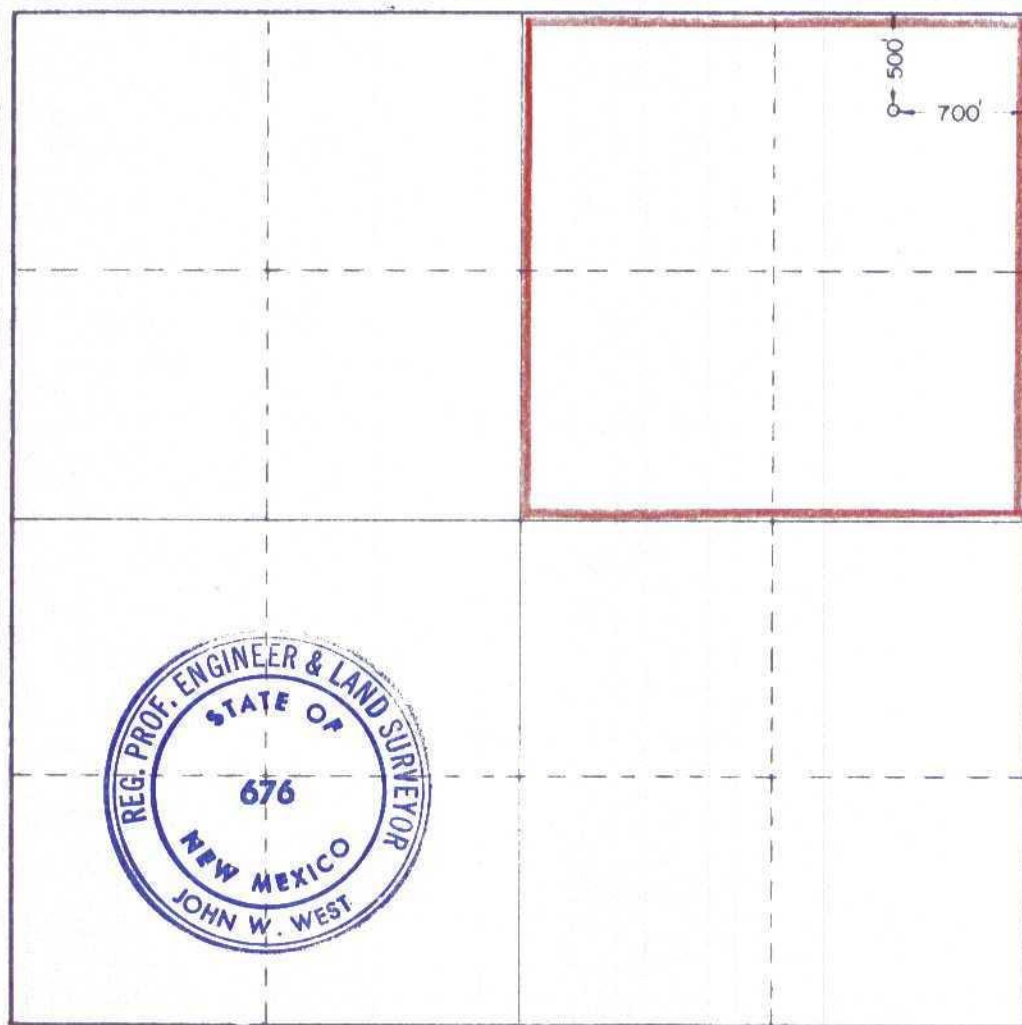
| | | | | | |
|--|----------------------|----------------------------|--------------------------|----------------------------|----------------------|
| Operator Energy Reserves Corp. Inc. | | | Lease Bledsloe | | Well No. 2 |
| Unit Letter A | Section 11 | Township 6 South | Range 33 East | County Roosevelt | |
| Actual Portage Location of Well: 500 feet from the north line and 700 feet from the east line | | | | | |
| Ground Level Elev. 4417.3 | Producing Formation | | Pool | Dedicated Acreage | |

1. Outline the acreage dedicated to the subject well by colored pencil or hachure marks on the plat below.
2. If more than one lease is dedicated to the well, outline each and identify the ownership thereof (both as to working interest and royalty).
3. If more than one lease of different ownership is dedicated to the well, have the interests of all owners been consolidated by communitization, unitization, force-pooling, etc?

☐ Yes ☐ No If answer is "yes," type of consolidation _____

If answer is "no," list the owners and tract descriptions which have actually been consolidated. (Use reverse side of this form if necessary.) _____

No allowable will be assigned to the well until all interests have been consolidated (by communitization, unitization, forced-pooling, or otherwise) or until a non-standard unit, eliminating such interests, has been approved by the Commission.



CERTIFICATION

I hereby certify that the information contained herein is true and complete to the best of my knowledge and belief.

W. O. Sandidge
Name

W. O. Sandidge

Position

District Engineer

Company

Energy Reserves Group, Inc.

Date

November 10, 1980

I hereby certify that the well location shown on this plat was plotted from field notes of actual surveys made by me or under my supervision, and that the same is true and correct to the best of my knowledge and belief.

Date Surveyed

Nov. 5, 1980

Registered Professional Engineer and/or Land Surveyor

John W. West

Certificate No. **JOHN W. WEST 676**
PATRICK A. ROMERO 6863
Ronald J. Eidson 3239

**NEW MEXICO OIL CONSERVATION COMMISSION
WELL LOCATION AND ACREAGE DEDICATION PLAT**

Form C-102
Superseded C-128
Effective 1-1-85

All distances must be from the outer boundaries of the Section

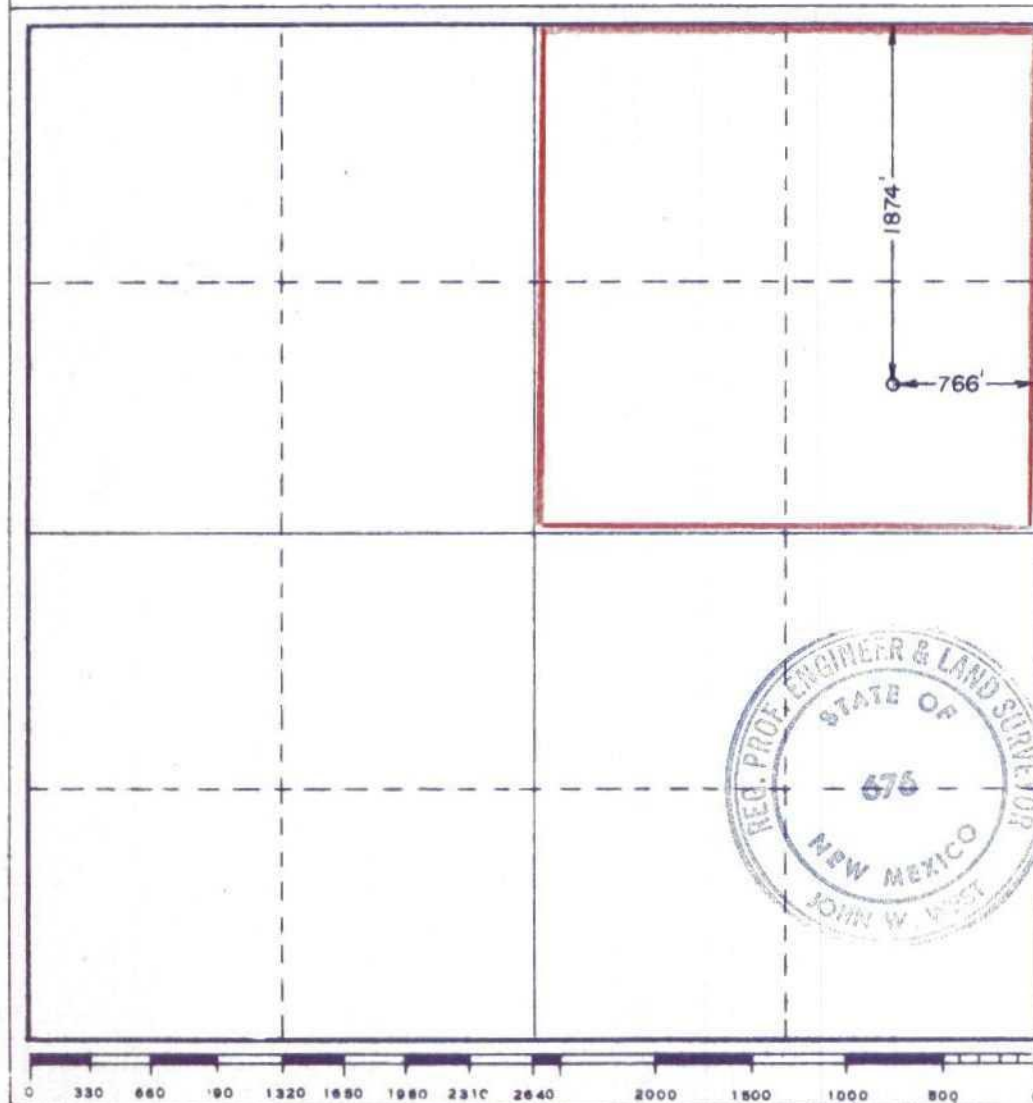
| | | | | | |
|---|----------------------|----------------------------|-------------------------|---------------------------------|----------------------|
| Operator Energy Reserves Group | | | Lease Bledsoe | | Well No. 1 |
| Unit Letter H | Section 11 | Township 6 South | Range 33 East | County Roosevelt | |
| Actual Footage Location of Well: 1874 feet from the North line and 766 feet from the East line | | | | | |
| Ground Level Elev. 4402.3 | Producing Formation | | Pool | Dedicated Acreage: Acres | |

1. Outline the acreage dedicated to the subject well by colored pencil or hachure marks on the plat below.
2. If more than one lease is dedicated to the well, outline each and identify the ownership thereof (both as to working interest and royalty).
3. If more than one lease of different ownership is dedicated to the well, have the interests of all owners been consolidated by communitization, unitization, force-pooling, etc?

☐ Yes ☐ No If answer is "yes," type of consolidation _____

If answer is "no," list the owners and tract descriptions which have actually been consolidated. (Use reverse side of this form if necessary.) _____

No allowable will be assigned to the well until all interests have been consolidated (by communitization, unitization, forced-pooling, or otherwise) or until a non-standard unit, eliminating such interests, has been approved by the Commission.



CERTIFICATION

I hereby certify that the information contained herein is true and complete to the best of my knowledge and belief.

Greg Lalicker
Name **Greg Lalicker**
Petroleum Engineer

Position
BHP Petroleum (Americas) Inc.

Company
May 5, 1986

Date

I hereby certify that the well location shown on this plat was plotted from field notes of actual surveys made by me or under my supervision, and that the same is true and correct to the best of my knowledge and belief.

Date Surveyed
March 4, 1980

Registered Professional Engineer and or Land Surveyor

John W. West
Certificate No. **JOHN W. WEST 676**
PATRICK A. ROMERO 6863
Ronald J. Eidson 3239