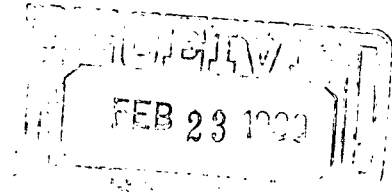


MERIDIAN OIL

February 22, 1989

Mr. William LeMay
New Mexico Oil Conservation Division
Post Office Box 2088
Santa Fe, New Mexico 87504



Dear Mr. LeMay:

This is a request for administrative approval for a non-standard proration unit for a gas well location in the Basin Fruitland Coal Pool.

Meridian Oil Inc. San Juan 31-6 Unit #201 is located at 1490' from the North line and 790' from the East line of Section 1, T-30-N, R-6-W, Rio Arriba County, New Mexico.

A copy of this application is being submitted to all offset operators by certified mail with a request that they furnish your Santa Fe office with a Waiver of Objection, and return one copy to this office.

A plat showing the proposed well location and configuration of Section 1, along with an ownership plat, are attached.

Sincerely yours,


Peggy Bradfield

encl.

WAIVER

_____ hereby waives objection to Meridian Oil Inc.'s application for a non-standard proration unit for their San Juan 31-6 Unit #201 as proposed above.

By: _____

Date: _____

xc: Northwest Pipeline

Copy sent to E. Bosch 2/27/89

MERIDIAN OIL

NORTHWEST PIPELINE
CORPORATION

FEB 22 1989

PRODUCTION AND DRILLING

February 22, 1989

Mr. William LeMay
New Mexico Oil Conservation Division
Post Office Box 2088
Santa Fe, New Mexico 87504

Dear Mr. LeMay:

This is a request for administrative approval for a non-standard proration unit for a gas well location in the Basin Fruitland Coal Pool.

Meridian Oil Inc. San Juan 31-6 Unit #201 is located at 1490' from the North line and 790' from the East line of Section 1, T-30-N, R-6-W, Rio Arriba County, New Mexico.

A copy of this application is being submitted to all offset operators by certified mail with a request that they furnish your Santa Fe office with a Waiver of Objection, and return one copy to this office.

A plat showing the proposed well location and configuration of Section 1, along with an ownership plat, are attached.

Sincerely yours,


Peggy Bradfield

encl.

WAIVER

NWPL hereby waives objection to Meridian Oil Inc.'s application for a non-standard proration unit for their San Juan 31-6 Unit #201 as proposed above.

By: Paul C. Thompson

Date: 2/27/89

xc: Northwest Pipeline

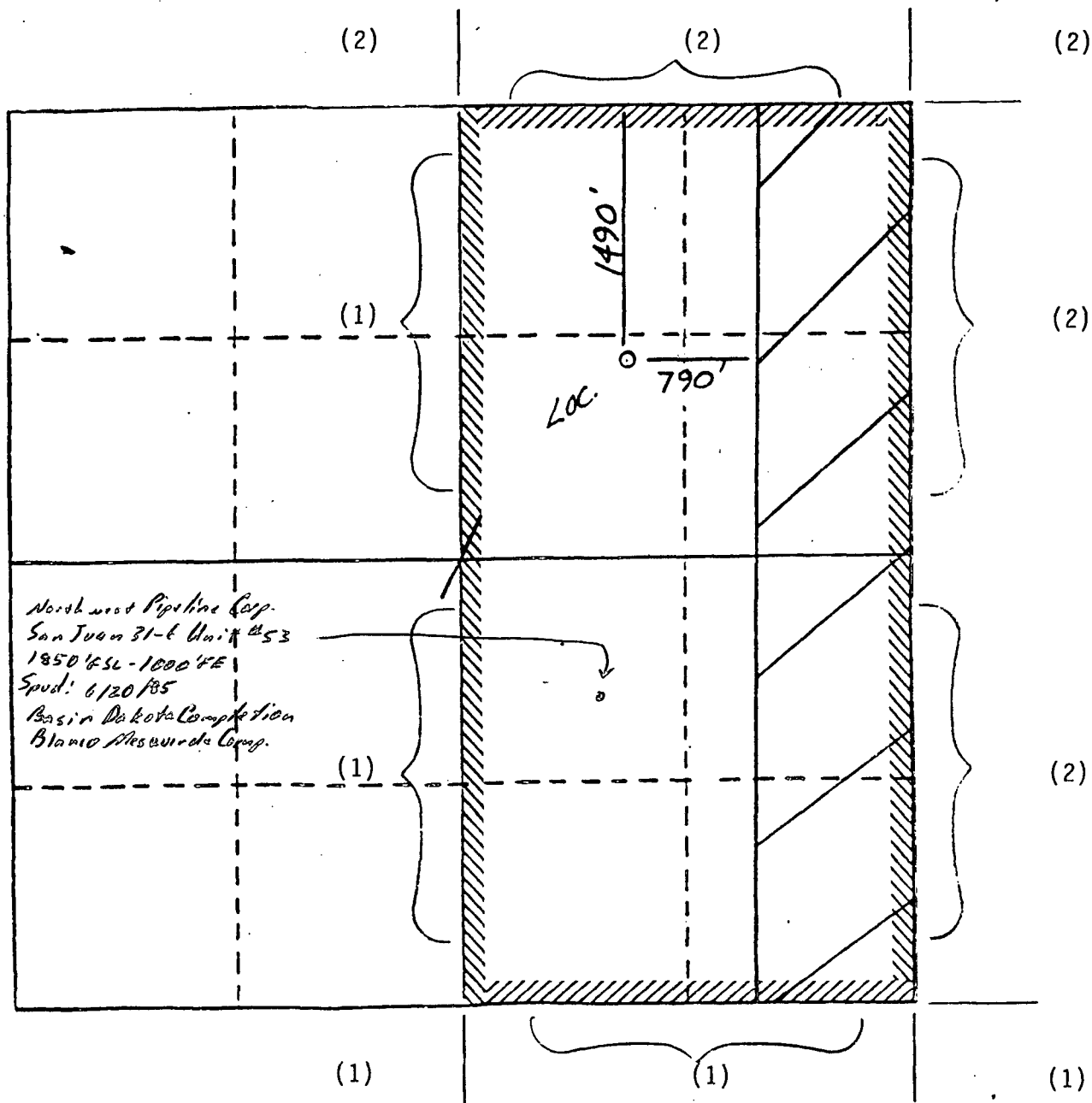
MERIDIAN OIL INC.

Well Name San Juan 31-6 Unit #201, Fruitland Coal

Footage---- 1490' FNL; 790' FEL

APPLICATION FOR NON-STANDARD PRORATION UNIT

County Rio Arriba State New Mexico Section 1 Township 30N Range 6W

REMARKS: OFFSET OPERATORS:

(1) Meridian Oil Inc.

(2) Northwest Pipeline Corporation

All distances must be from the outer boundaries of the Section.

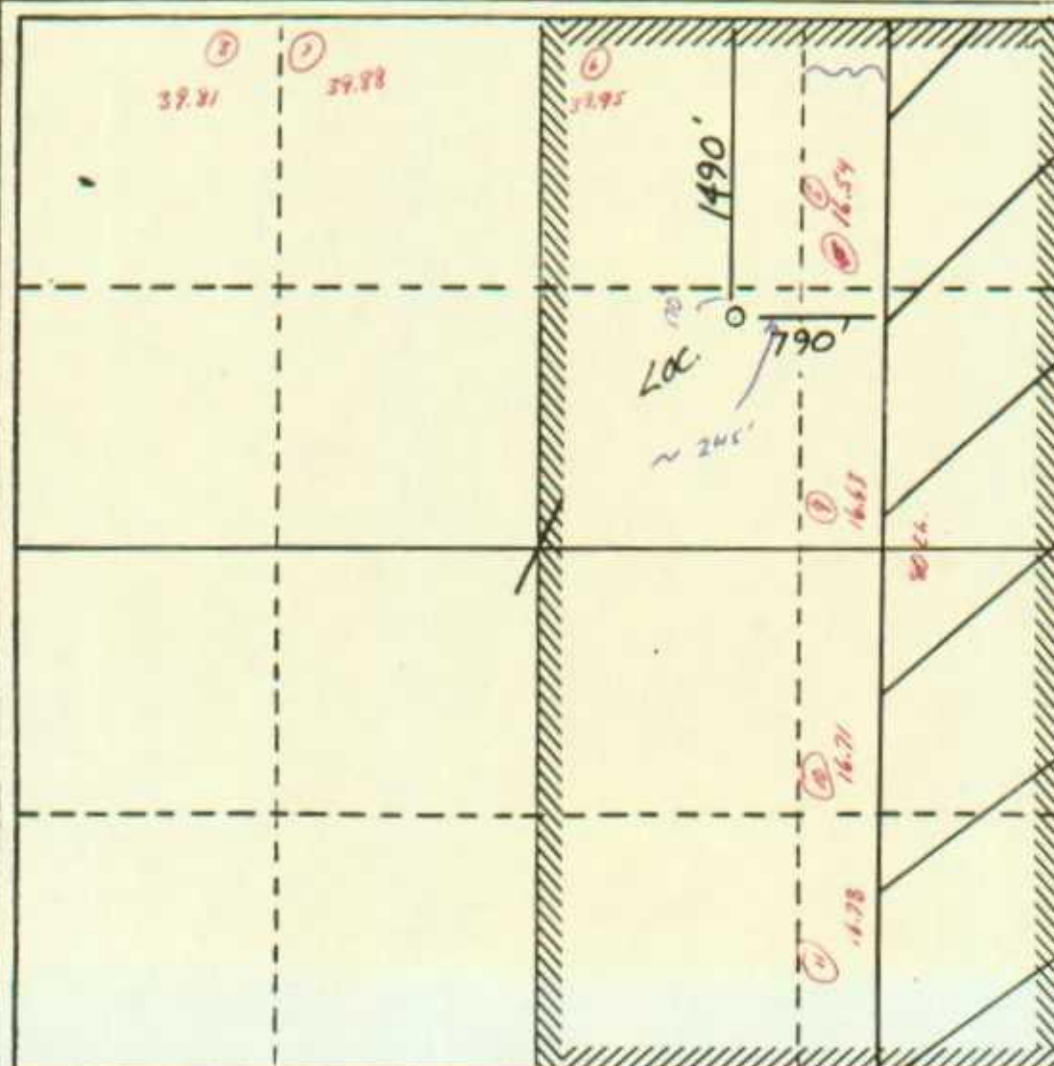
Operator Meridian Oil Inc.		Lease San Juan 31-6 Unit (NM-012299)		Well No. 201
Unit Letter G	Section 1	Township 30 North	Range 6 West	County Rio Arriba
Actual Footage Location of Wells 1490 feet from the North line and 790 feet from the East line				
Ground Level Elev. 6437	Producing Formation Fruitland Coal	Pool Basin	Dedicated Acreage: 226.61* Acres	

1. Outline the acreage dedicated to the subject well by colored pencil or hatchure marks on the plat below.
2. If more than one lease is dedicated to the well, outline each and identify the ownership thereof (both as to working interest and royalty).
3. If more than one lease of different ownership is dedicated to the well, have the interests of all owners been consolidated by communitization, unitization, force-pooling, etc?

☒ Yes ☐ No If answer is "yes," type of consolidation Unitization

If answer is "no," list the owners and tract descriptions which have actually been consolidated. (Use reverse side of this form if necessary.)

No allowable will be assigned to the well until all interests have been consolidated (by communitization, unitization, forced-pooling, or otherwise) or until a non-standard unit, eliminating such interests, has been approved by the Division



CERTIFICATION

I hereby certify that the information contained herein is true and complete to the best of my knowledge and belief.

Name
Regulatory Affairs
Position
Meridian Oil Inc.
Company

Date

I hereby certify that the information shown on this plat was obtained from field notes of actual survey made by me or under my supervision, and that the same is true and correct to the best of my knowledge and belief.

Date Surveyed
11-21-58

Registered Professional Engineer
and/or Land Surveyor

Neale C. Edwards

Certificate No.
6857





STATE OF NEW MEXICO
ENERGY AND MINERALS DEPARTMENT
OIL CONSERVATION DIVISION
AZTEC DISTRICT OFFICE

1000 RIO BRAZOS ROAD
AZTEC, NEW MEXICO 87410
(505) 334-6178

OIL CONSERVATION DIVISION
BOX 2088
SANTA FE, NEW MEXICO 87501

DATE 2-28-89

RE: Proposed MC _____
Proposed DHC _____
Proposed NSL _____
Proposed SWD _____
Proposed WFX _____
Proposed PMX _____
NSP X

Gentlemen:

I have examined the application dated 2-28-89
for the Martinez Oil Inc. J.J. 31-6 Unit #261 G-1-30N-6W
Operator Lease and Well No. Unit, S-T-R

and my recommendations are as follows:

Approve

Yours truly,

Earl Bond

