
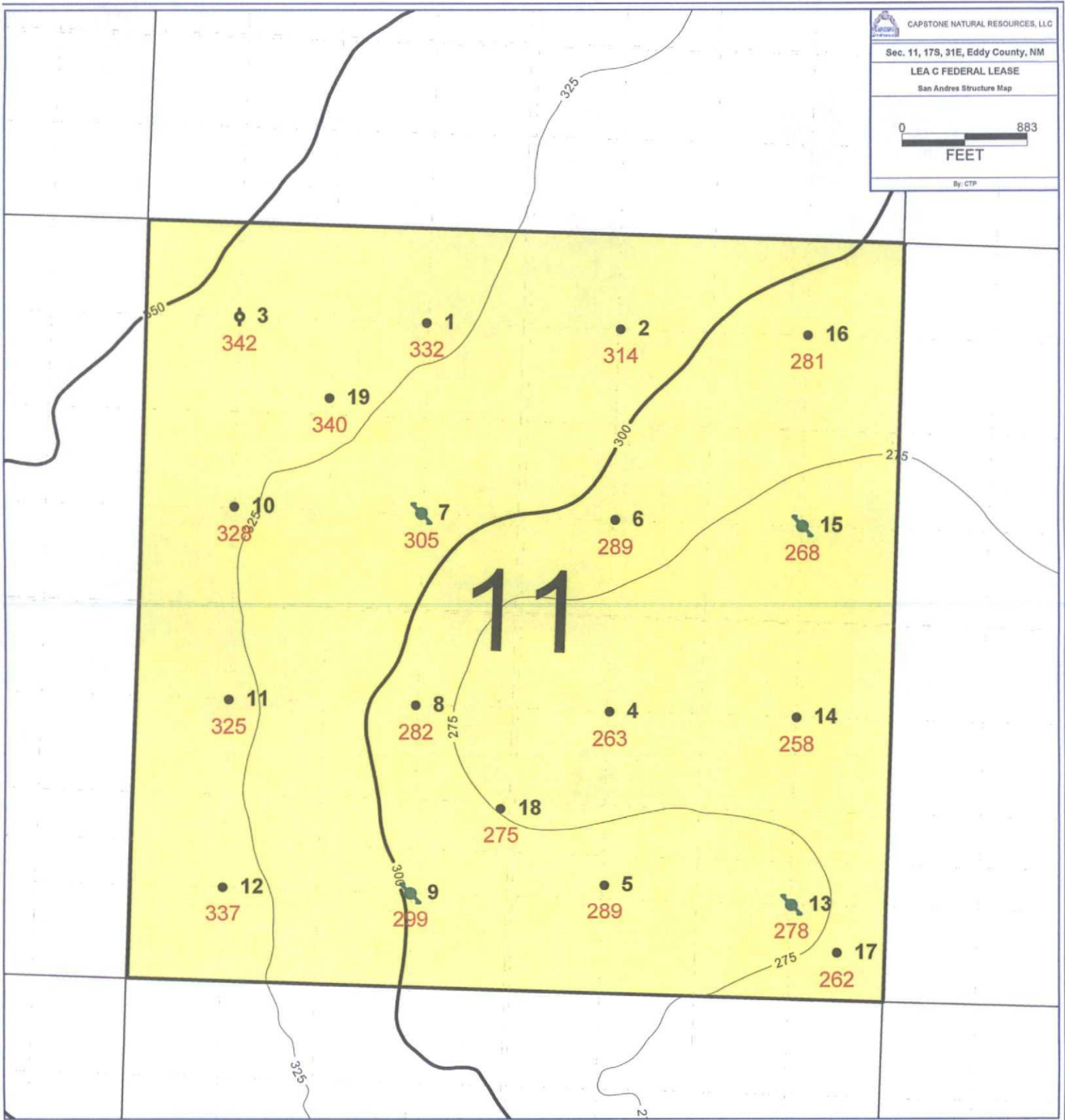


CAPSTONE NATURAL RESOURCES, LLC  
 Sec. 11, 17S, 31E, Eddy County, NM  
 LEA C FEDERAL LEASE  
 San Andres Structure Map



By: CTP



PETRA 9/3/2013 1:06:17 PM

CAPSTONE NATURAL RESOURCES, LLC

Sec. 11, 17S, 31E, Eddy County, NM

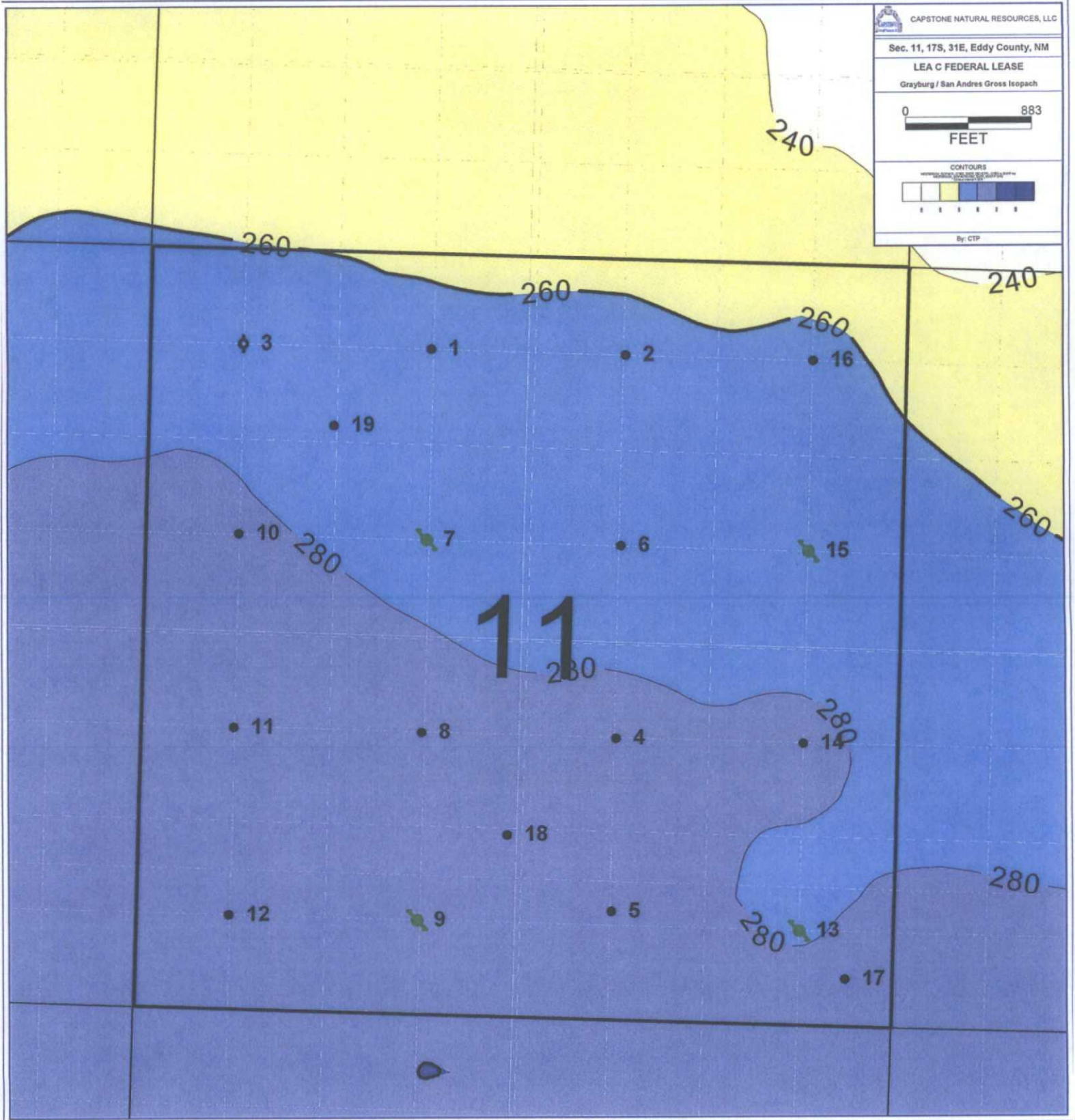
LEA C FEDERAL LEASE

Grayburg / San Andres Gross Isopach

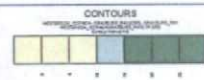
0 883  
FEET

CONTOURS

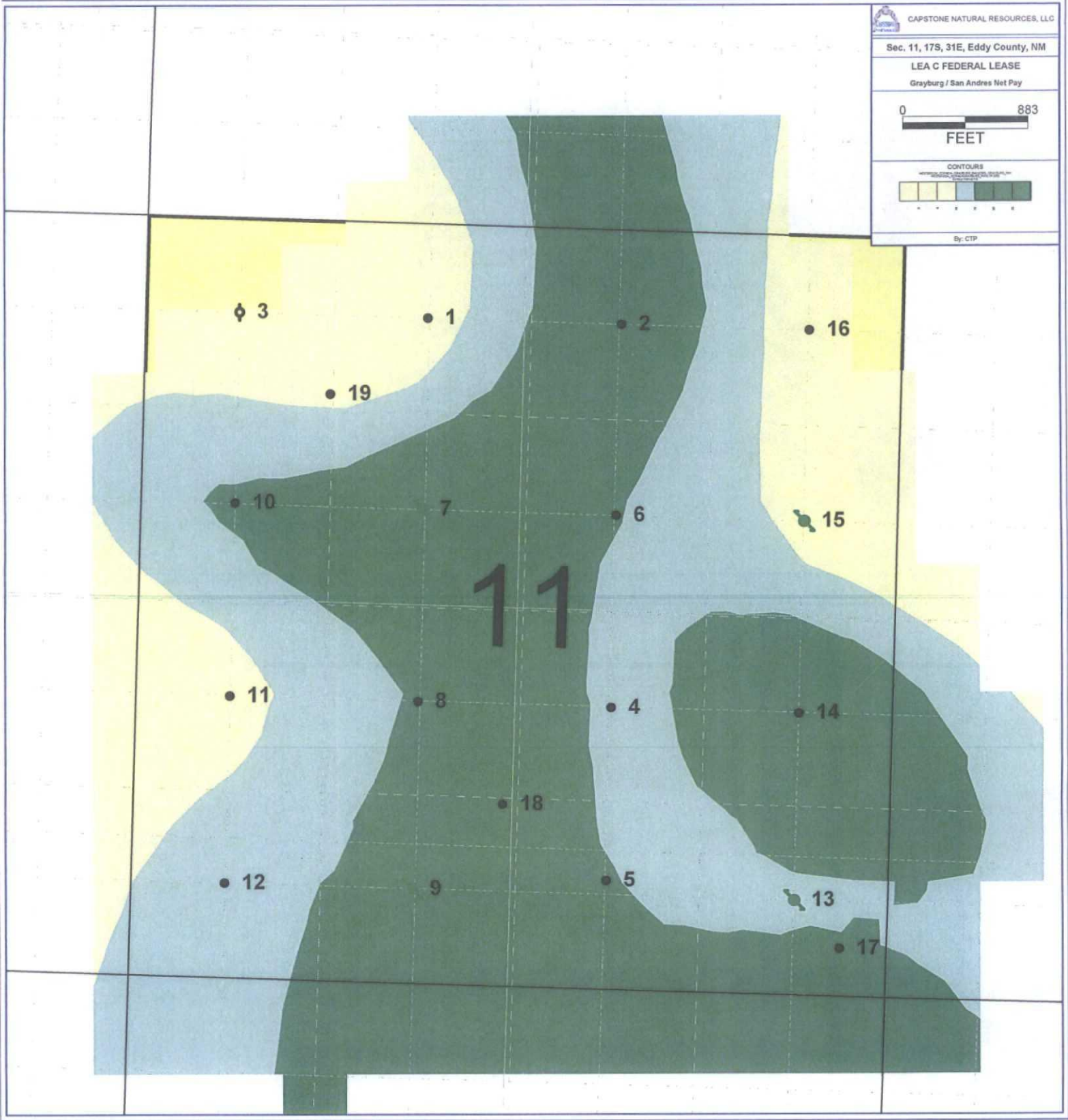
By: CTP



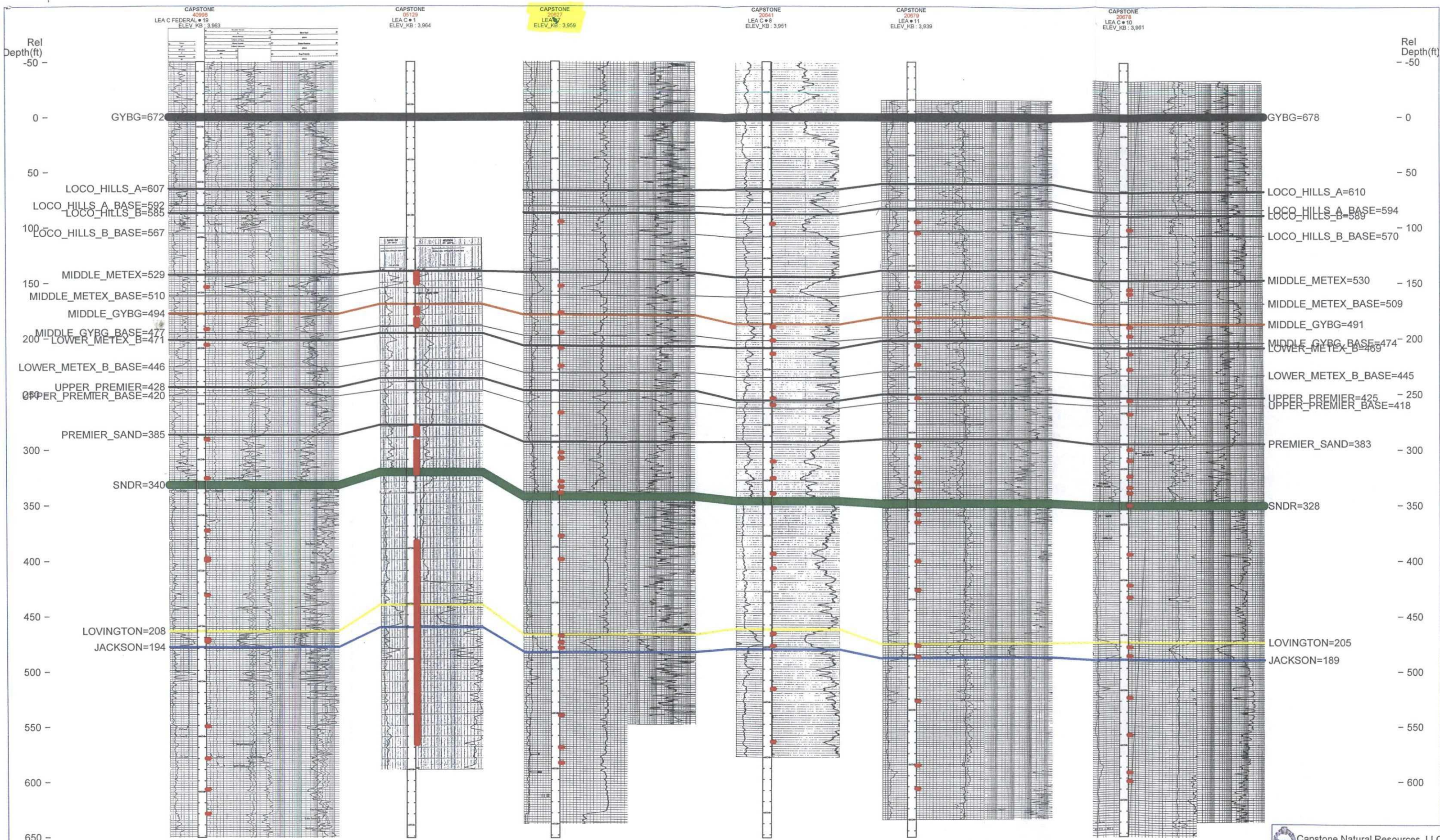




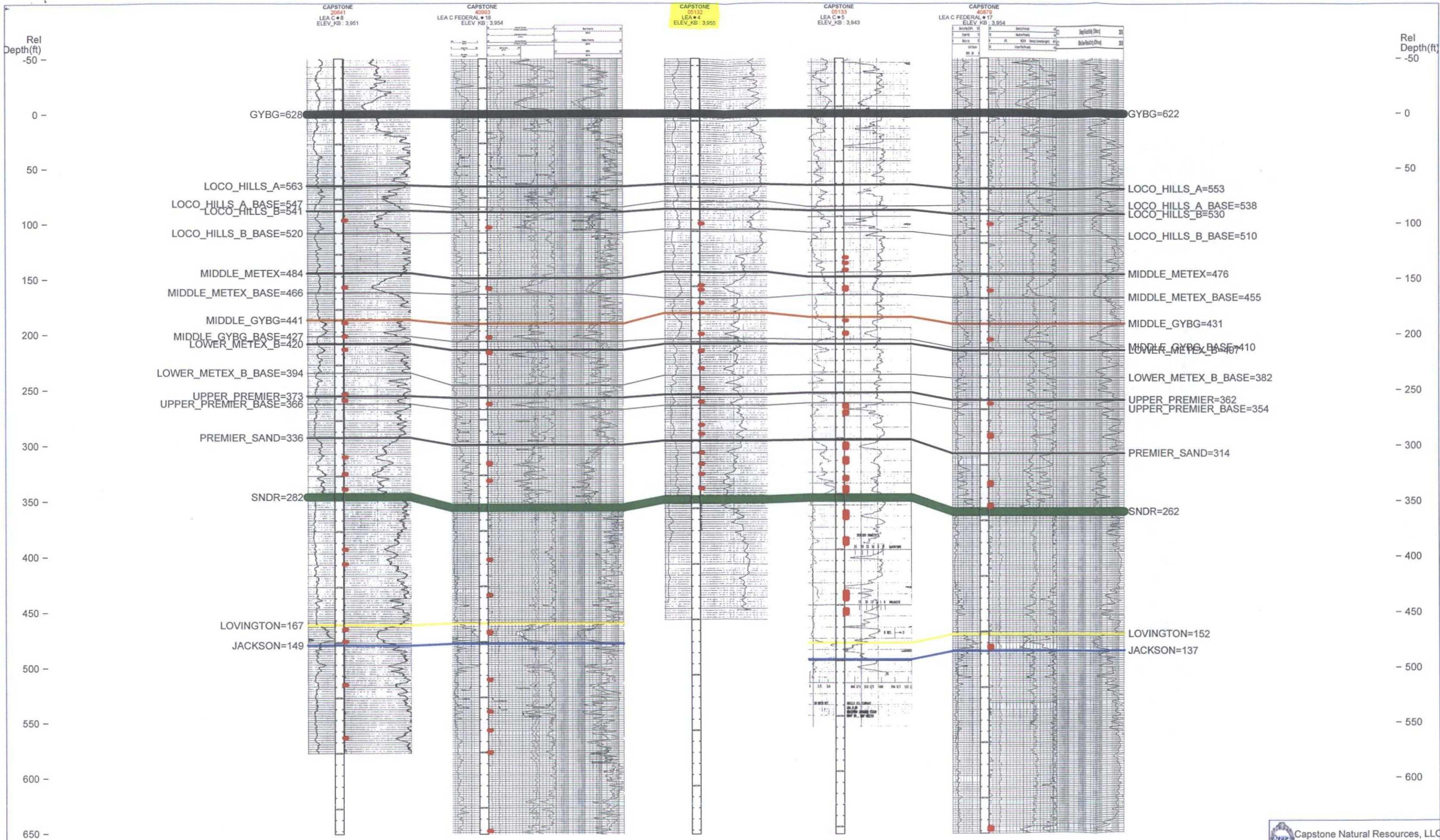
By: CTP











Rel Depth(ft)  
-50 -  
0 -  
50 -  
100 -  
150 -  
200 -  
250 -  
300 -  
350 -  
400 -  
450 -  
500 -  
550 -  
600 -  
650 -

Rel Depth(ft)  
-50 -  
0 -  
50 -  
100 -  
150 -  
200 -  
250 -  
300 -  
350 -  
400 -  
450 -  
500 -  
550 -  
600 -  
650 -

CAPSTONE  
20641  
LEA C # 8  
ELEV\_KB : 3,951

CAPSTONE  
40693  
LEA C FEDERAL # 16  
ELEV\_KB : 3,954

CAPSTONE  
05132  
LEA # 4  
ELEV\_KB : 3,955

CAPSTONE  
05133  
LEA C # 5  
ELEV\_KB : 3,943

CAPSTONE  
40679  
LEA C FEDERAL # 17  
ELEV\_KB : 3,954



