

Northwest Exploration Company
Gavilan #1 Well
930' FNL & 910' FEL
Sec 26 T25N R2W
Rio Arriba County, New Mexico
Schlumberger - Induction-Gamma Ray Log
1-13-82
Elev = 7467' KB

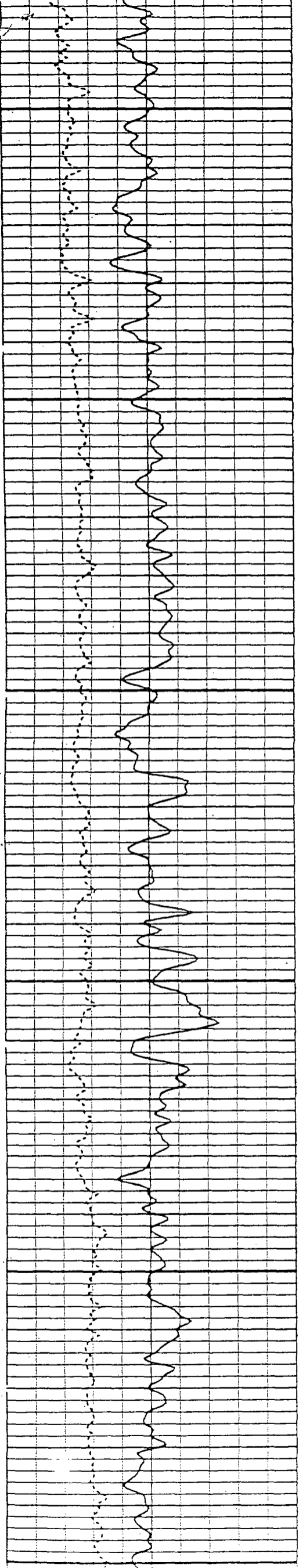
Gallup
6780'

6800

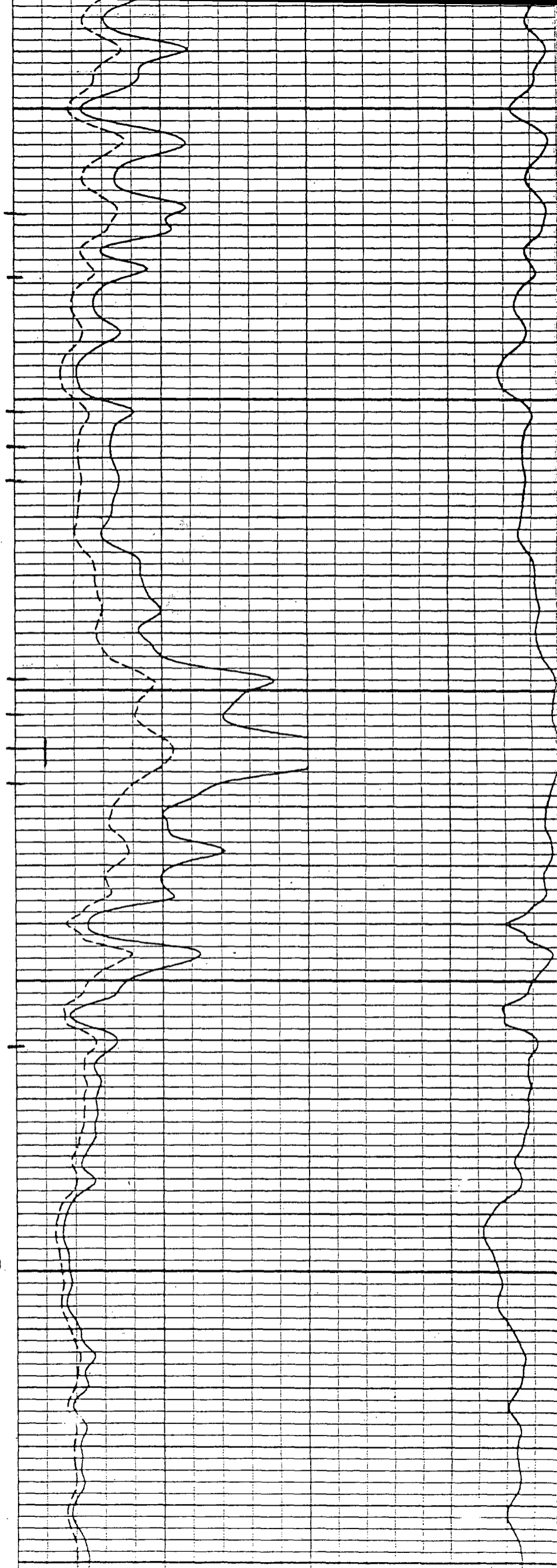
BEFORE EXAMINER STOGNER
OIL CONSERVATION DIVISION
NORTHWEST EXHIBIT NO. 4
CASE NO. 8042

6900

7000



7000



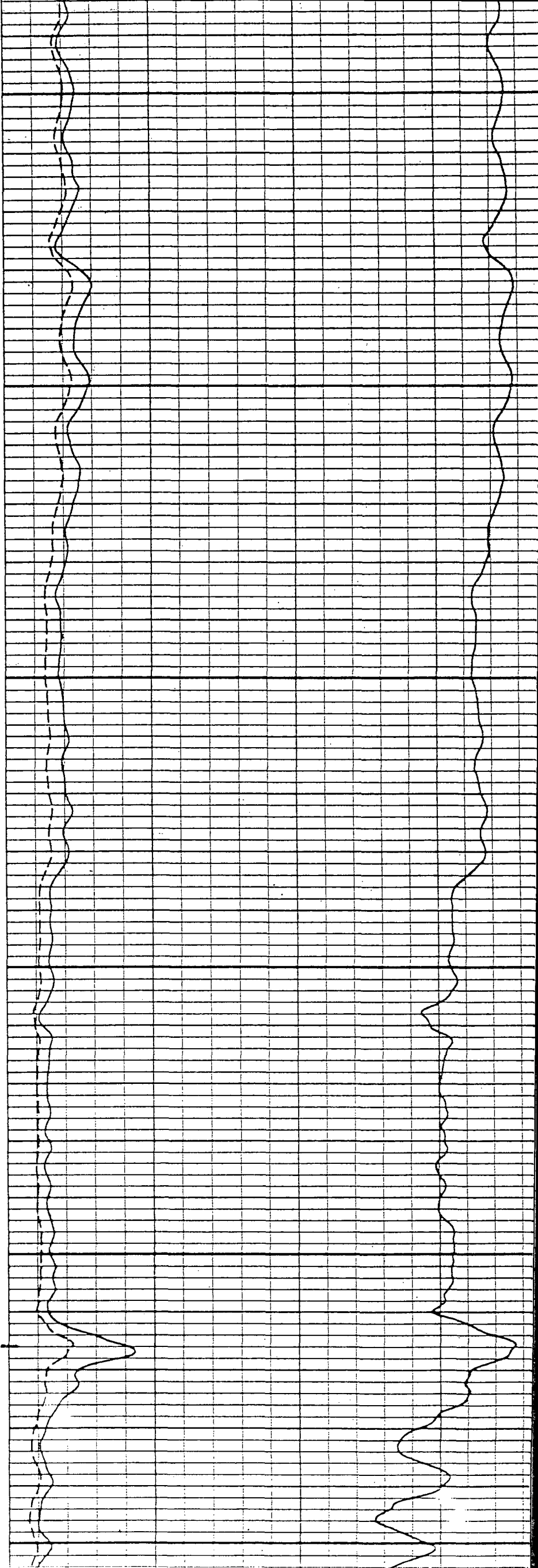
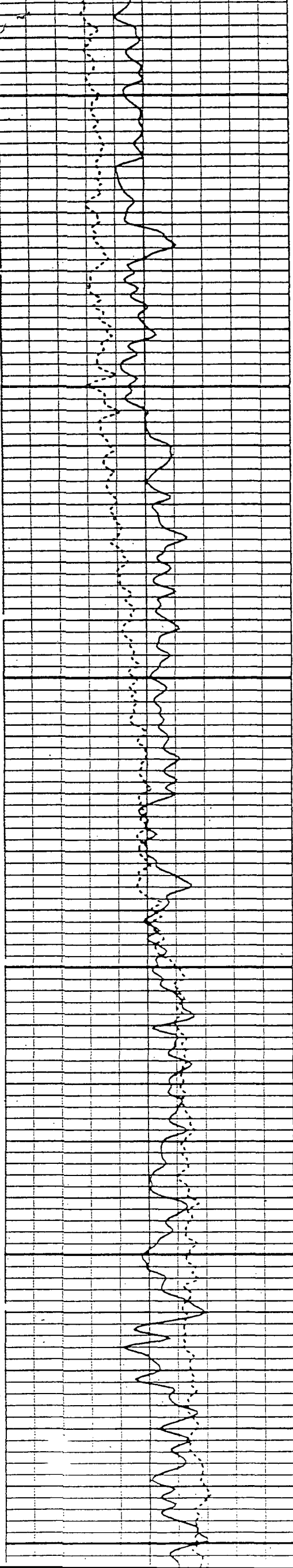
7100

7200

7300

7400

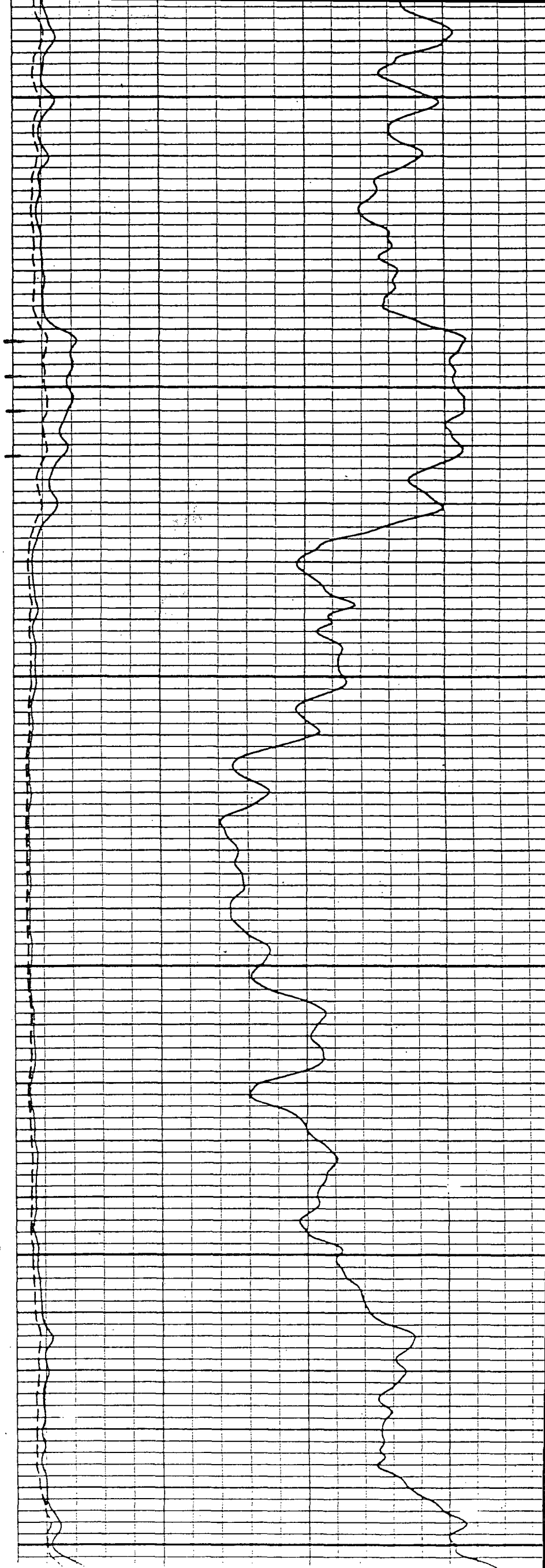
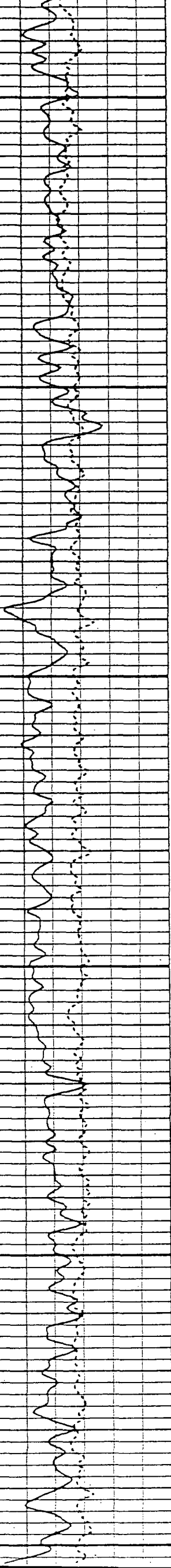
7500



7500

7600

7700



Top of Cambrian

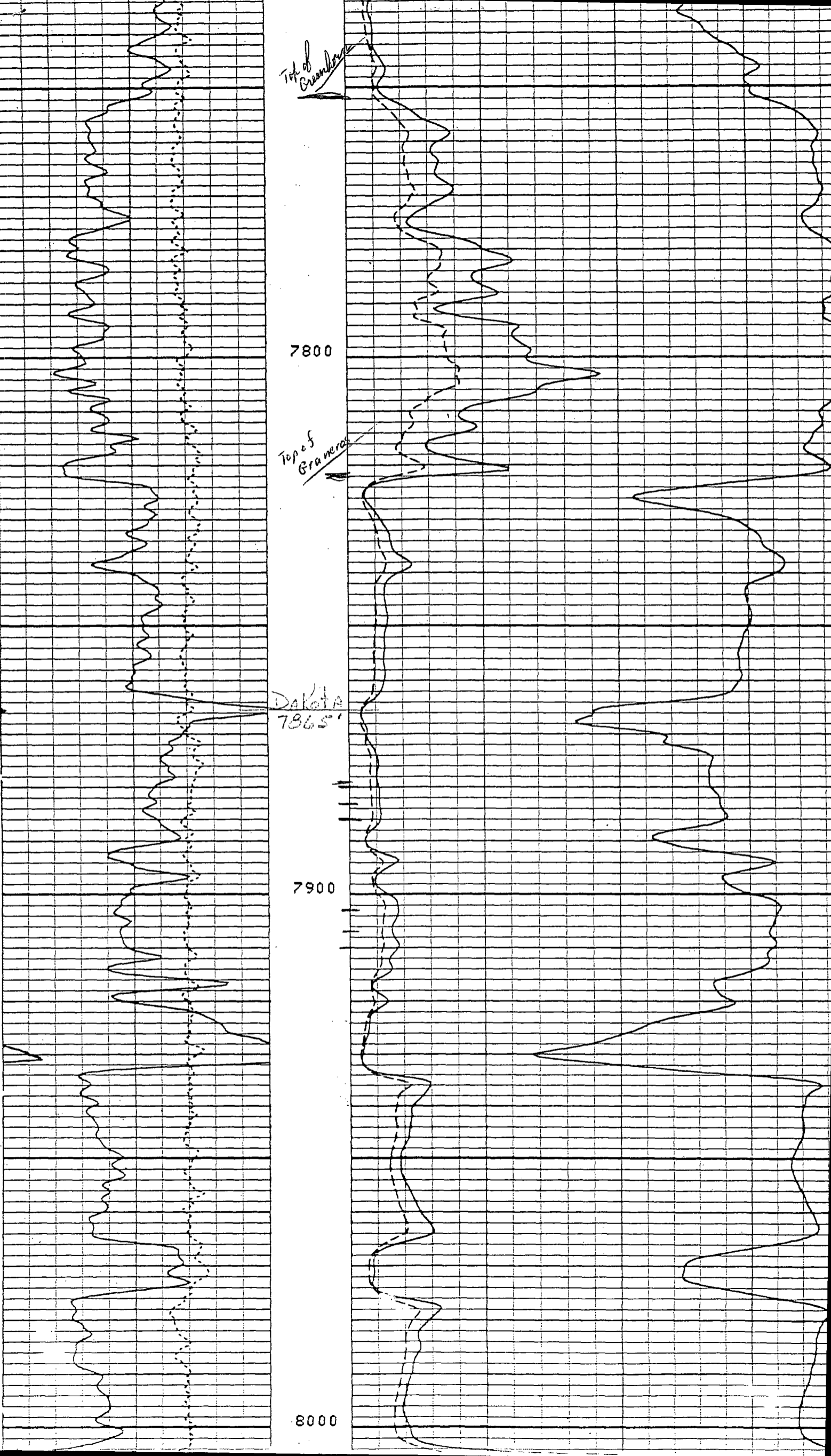
7800

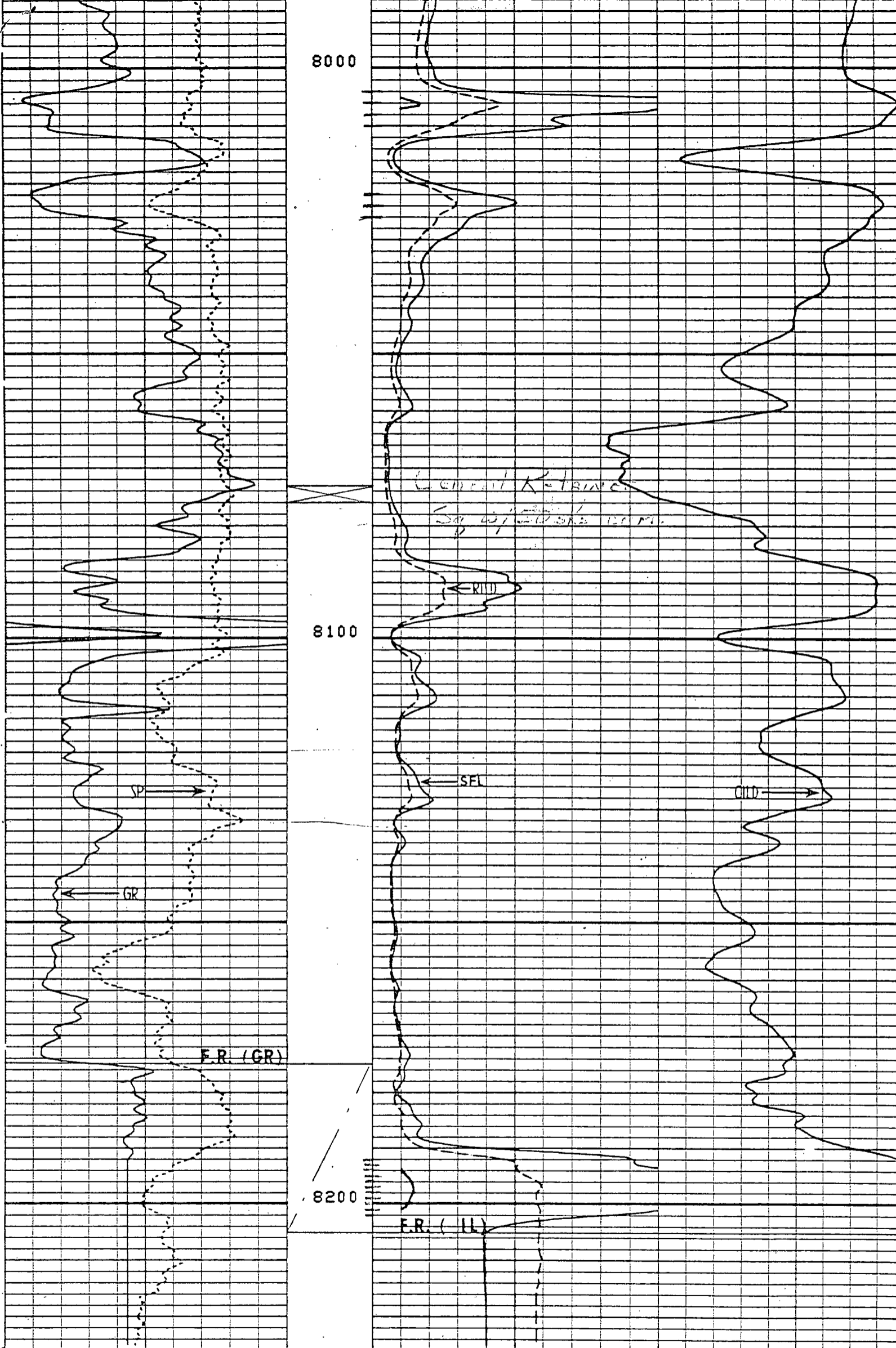
Top of Gramercy

Dakota
7865'

7900

8000





FILE
8

0.0	GR (GAPI)	200.0
-----	-----------	-------

0.0	ILD (DHMM)	100.0
0.0	SFLA (DHMM)	100.0