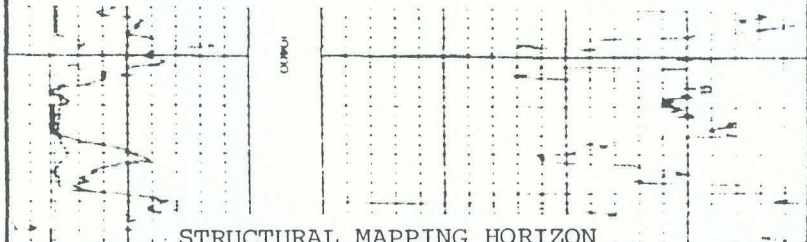


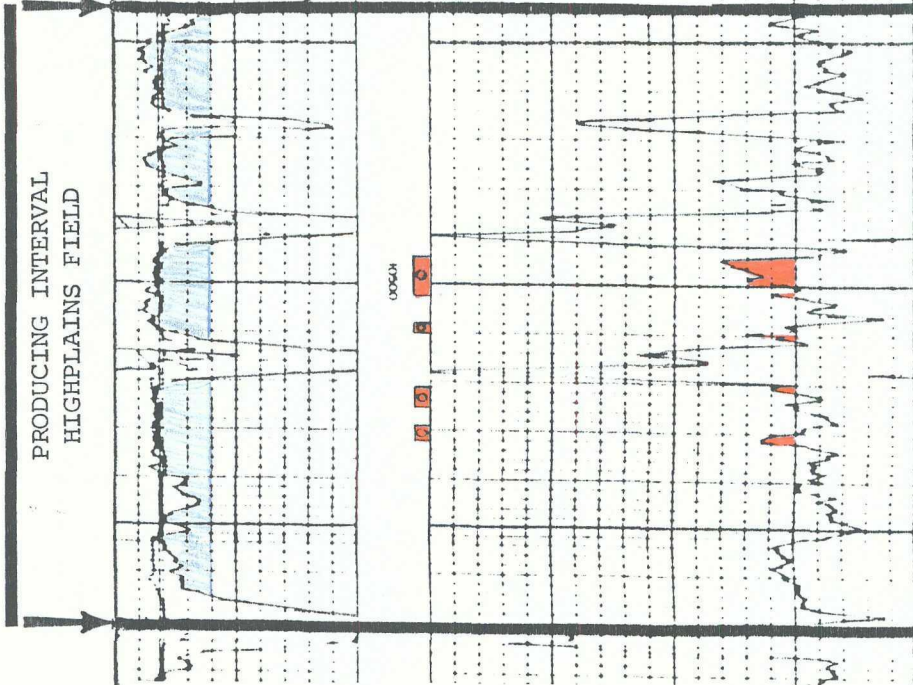
Dresser Atlas

*Bitc
Acoustilog*

COMPANY		CAYMAN CORPORATION	
WELL		HIGH PLAINS NO. 1	
FIELD		WILHEAT (PERM) FIELD	
COUNTY	LEA	STATE	NEW MEXICO
LOCATION		190N 51E 1 190N 1W1	
SEC		14 Twp 14 S R. 34 E	
Permanent Datum	5' SURFACE	Flow	2000
Log Measured from	K. R.	2	From Above Permanent Datum
Logging Measured from	K. R.		
Date	6-12-69		
Run No.	1027		
Depth - Driller	1027		
Depth - Logger	1027		
Bottom - Logger	1027		
Top Logged Interval	5125		
Casing - Driller	8 7/8 4420		
Casing - Logger			
Bit Size	5 1/2		
True to 4 in Hole	6125		
Density and Velocity	2.6	1.5	
Volume of Solids	2.6	1.5	
Bit - Meas. Temp.	100		
Bit - Meas. Temp.	100		
Source of Bottom Bit	HEAT		
Time Since Log	100		
Max. Temp. Log P.	100		
Log. P. M. (ft. Log)	100		
Logged by	W. J. H. RB		
Checked by	W. J. H. RB		



STRUCTURAL MAPPING HORIZON



PRODUCING INTERVAL
HIGH PLAINS FIELD

Completed 6-4-69, IPF 488 BO + 88 BW/24 hrs through perms 10,494-502, 10,505-510, 10,521-525, 10,529-532.
Plugged 1980, Cumulative Production 57,342 BO

HOLE SIZE (INCHES)		SPECIFIC ACOUSTIC TIME	
SP or G R & Caliper		ACOUSTILOG	
LOGGING COMPANY		LOGGING COMPANY	
LOGGING DATE		LOGGING DATE	
LOGGING TIME		LOGGING TIME	
LOGGING LOCATION		LOGGING LOCATION	

EX #9