

BLINEBRY POOL - ALLOWABLE LIMITED EXXON GPU

Lease	Acres	Factor	Current Capability mcf/mo	Trial Allowable mcf/mo	Proposed Allowable mcf/mo	Additional Capacity mcf/mo
N.M S State #38	80	0.5	27000	22275	23400	4725
Allocation Factor				44500	46800	

*Exxon Exhibits 1 through 50
Complete Set*

NEW MEXICO S STATE #38
 BLINEBRY OIL AND GAS POOL -- GAS WELL
 80 ACRES DEDICATED

	SALES	ALLOWABLE	OVER/UNDE	CUMULATIVE
	-----	-----	-----	-----
Oct-94	8820	21275	0	0
Nov-94	1409	21275	0	0
Dec-94	6365	21275	0	0
Jan-95	7286	21275	0	0
Feb-95	482	21275	0	0
Mar-95	75	21275	0	0
Apr-95	4972	21275	0	0
May-95	15783	21275	0	0
Jun-95	16775	21275	0	0
Jul-95	27859	21275	6584	6584
Aug-95	28644	21275	7369	13953
Sep-95	27030	21275	5755	19708
Oct-95	26784	21275	5509	25217
Nov-95	24420	21275	3145	28362
Dec-95	27000	21275	5725	34087
Jan-96	27000	21275	5725	39812
Feb-96	27000	21275	5725	45537
Mar-96	27000	21275	5725	51262
Apr-96	27000	21275	5725	56987
May-96	27000	21275	5725	62712
Jun-96	27000	21275	5725	68437
Jul-96	27000	21275	5725	74162
Aug-96	27000	21275	5725	79887
Sep-96	27000	21275	5725	85612

Exhibit No. 5A
 Exxon Corporation
 NMOCC Case No. 11468
 Hrg. Date: February 15, 1996

NEW MEXICO S STATE #38
 BLINEBRY OIL AND GAS POOL -- GAS WELL
 80 ACRES DEDICATED

	SALES	ALLOWABLE	OVER/UNDE	CUMULATIVE
	-----	-----	-----	-----
Oct-94	8820	21275	0	0
Nov-94	1409	21275	0	0
Dec-94	6365	21275	0	0
Jan-95	7286	21275	0	0
Feb-95	482	21275	0	0
Mar-95	75	21275	0	0
Apr-95	4972	21275	0	0
May-95	15783	21275	0	0
Jun-95	16775	21275	0	0
Jul-95	27859	21275	6584	6584
Aug-95	28644	21275	7369	13953
Sep-95	27030	21275	5755	19708
Oct-95	26784	21275	5509	25217
Nov-95	24420	21275	3145	28362
Dec-95	27000	21275	5725	34087
Jan-96	27000	21275	5725	39812
Feb-96	27000	21275	5725	45537
Mar-96	27000	21275	5725	51262
Apr-96	27000	22275	4725	55987
May-96	27000	22275	4725	60712
Jun-96	27000	22275	4725	65437
Jul-96	27000	22275	4725	70162
Aug-96	27000	22275	4725	74887
Sep-96	27000	22275	4725	79612

Exhibit No. 5B
 Exxon Corporation
 NMOCC Case No. 11468
 Hrg. Date: February 15, 1996

NEW MEXICO S STATE #38
 BLINEBRY OIL AND GAS POOL -- GAS WELL
 80 ACRES DEDICATED

	SALES MCF	PROPOSED ALLOWABLE MCF	MONTHLY OVR/UNDR OVERPRODUCTION MCF	CUMULATIVE OVERPRODUCTION MCF
Oct-94	8820	21275	0	0
Nov-94	1409	21275	0	0
Dec-94	6365	21275	0	0
Jan-95	7286	21275	0	0
Feb-95	482	21275	0	0
Mar-95	75	21275	0	0
Apr-95	4972	21275	0	0
May-95	15783	21275	0	0
Jun-95	16775	21275	0	0
Jul-95	27859	21275	6584	6584
Aug-95	28644	21275	7369	13953
Sep-95	27030	21275	5755	19708
Oct-95	26784	21275	5509	25217
Nov-95	24420	21275	3145	28362
Dec-95	27000	21275	5725	34087
Jan-96	27000	21275	5725	39812
Feb-96	27000	21275	5725	45537
Mar-96	27000	21275	5725	51262
Apr-96	27000	23400	3600	54862
May-96	27000	23400	3600	58462
Jun-96	27000	23400	3600	62062
Jul-96	27000	23400	3600	65662
Aug-96	27000	23400	3600	69262
Sep-96	27000	23400	3600	72862

Exhibit No. 5C
 Exxon Corporation
 NMOCC Case No. 11468
 Hrg. Date: February 15, 1996

New Mexico "S" State #38 With Proposed Blinebry Allowable

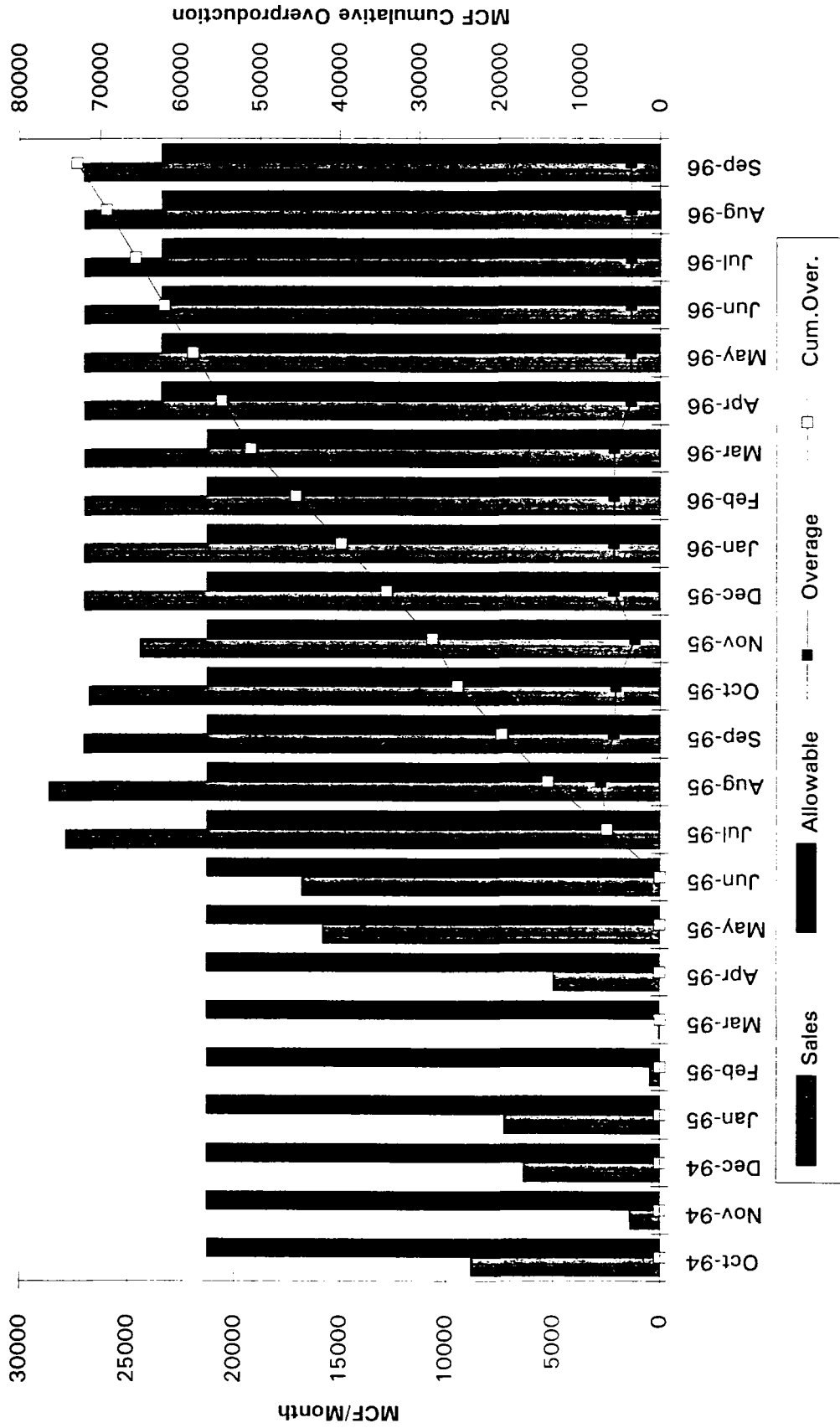


Exhibit No. 50
 Exxon Corporation
 NMOCC Case No. 11468
 Hrg. Date: February 15, 1996

ACTUALS THROUGH 11/31/95

NEW MEXICO S STATE #20
TUBB GAS POOL
160 ACRES DEDICATED

	MONTHLY SALES-MCF	ALLOWABLE MCF	MONTHLY OVER/UNDE MCF	CUMULATIVE OVERPRODUCTION MCF
Oct-94	13526	13500	26	18450
Nov-94	14485	13500	985	19435
Dec-94	20620	13500	7120	26555
Jan-95	21443	13500	7943	34498
Feb-95	19464	13500	5964	40462
Mar-95	21283	13500	7783	48245
Apr-95	19933	13500	6433	54678
May-95	20289	13500	6789	61467
Jun-95	19224	13500	5724	67191
Jul-95	19415	13500	5915	73106
Aug-95	18910	13500	5410	78516
Sep-95	18930	13500	5430	83946 *6X Over
Oct-95	18150	16750	1400	85346
Nov-95	17640	16750	890	86236
Dec-95	18500	16750	1750	87986
Jan-96	18500	16750	1750	89736
Feb-96	18500	16750	1750	91486
Mar-96	18500	16750	1750	93236
Apr-96	18500	16750	1750	94986
May-96	18500	16750	1750	96736
Jun-96	18500	16750	1750	98486
Jul-96	18500	16750	1750	100236
Aug-96	18500	16750	1750	101986 *6X Over
Sep-96	18500	16750	1750	103736 *6X Over

Exhibit No. 2-A
Exxon Corporation
NMOCC Case No. 11468
Hrg. Date: February 15, 1996

ACTUALS THROUGH 11/31/95

NEW MEXICO S STATE #20
TUBB GAS POOL
160 ACRES DEDICATED

	MONTHLY SALES-MCF	PROPOSED ALLOWABLE MCF	MONTHLY OVR/UNDR MCF	CUMULATIVE OVERPRODUCTION MCF
Oct-94	13526	13500	26	18450
Nov-94	14485	13500	985	19435
Dec-94	20620	13500	7120	26555
Jan-95	21443	13500	7943	34498
Feb-95	19464	13500	5964	40462
Mar-95	21283	13500	7783	48245
Apr-95	19933	13500	6433	54678
May-95	20289	13500	6789	61467
Jun-95	19224	13500	5724	67191
Jul-95	19415	13500	5915	73106
Aug-95	18910	13500	5410	78516
Sep-95	18930	13500	5430	83946
Oct-95	18150	16750	1400	85346
Nov-95	17640	16750	890	86236
Dec-95	18500	16750	1750	87986
Jan-96	18500	16750	1750	89736
Feb-96	18500	16750	1750	91486
Mar-96	18500	16750	1750	93236
Apr-96	18500	18425	75	93311
May-96	18500	18425	75	93386
Jun-96	18500	18425	75	93461
Jul-96	18500	18425	75	93536
Aug-96	18500	18425	75	93611
Sep-96	18500	18425	75	93686

*6X Over

Exhibit No. ZB
Exxon Corporation
NMOCC Case No. 11468
Hrg. Date: February 15, 1996

New Mexico "S" State #20 - With Proposed Tubb Allowable

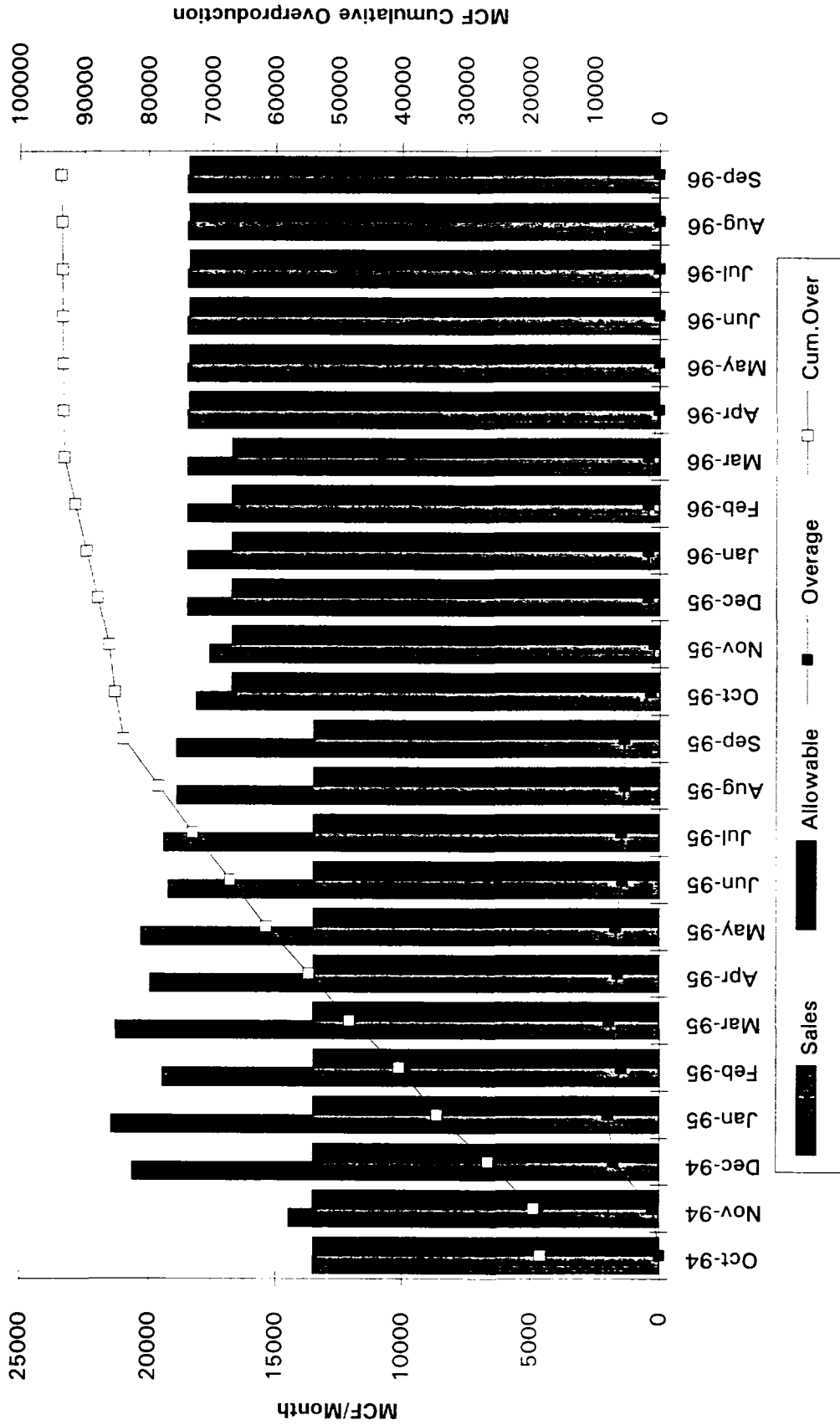


Exhibit No. ZC
 Exxon Corporation
 NMOCC Case No. 11468
 Hrg. Date: February 15, 1996

ACTUALS THROUGH 11/31/95

NEW MEXICO S STATE #13U
 TUBB GAS POOL
 160 ACRES DEDICATED

	MONTHLY SALES-MCF	ALLOWABLE MCF	MONTHLY OVER/UNDE MCF	CUMULATIVE OVERPRODUCTION MCF
Oct-94	4429	13500	0	0
Nov-94	4173	13500	0	0
Dec-94	2269	13500	0	0
Jan-95	0	13500	0	0
Feb-95	0	13500	0	0
Mar-95	0	13500	0	0
Apr-95	0	13500	0	0
May-95	0	13500	0	0
Jun-95	11310	13500	0	0
Jul-95	14694	13500	1194	1194
Aug-95	23808	13500	10308	11502
Sep-95	22740	13500	9240	20742
Oct-95	22320	16750	5570	26312
Nov-95	11880	16750	-4870	21442
Dec-95	22000	16750	5250	26692
Jan-96	22000	16750	5250	31942
Feb-96	22000	16750	5250	37192
Mar-96	22000	16750	5250	42442
Apr-96	22000	16750	5250	47692
May-96	22000	16750	5250	52942
Jun-96	22000	16750	5250	58192
Jul-96	22000	16750	5250	63442
Aug-96	22000	16750	5250	68692
Sep-96	22000	16750	5250	73942

Exhibit No. 3A
 Exxon Corporation
 NMOCC Case No. 11468
 Hrg. Date: February 15, 1996

ACTUALS THROUGH 11/3/1995

NEW MEXICO S STATE #13U
TUBB GAS POOL
160 ACRES DEDICATED

	MONTHLY SALES-MCF	PROPOSED ALLOWABLE MCF	MONTHLY OVR/UNDR MCF	CUMULATIVE OVERPRODUCTION MCF
Oct-94	4429	13500	0	0
Nov-94	4173	13500	0	0
Dec-94	2269	13500	0	0
Jan-95	0	13500	0	0
Feb-95	0	13500	0	0
Mar-95	0	13500	0	0
Apr-95	0	13500	0	0
May-95	0	13500	0	0
Jun-95	11310	13500	0	0
Jul-95	14694	13500	1194	1194
Aug-95	23808	13500	10308	11502
Sep-95	22740	13500	9240	20742
Oct-95	22320	16750	5570	26312
Nov-95	11880	16750	-4870	21442
Dec-95	22000	16750	5250	26692
Jan-96	22000	16750	5250	31942
Feb-96	22000	16750	5250	37192
Mar-96	22000	16750	5250	42442
Apr-96	22000	18425	3575	46017
May-96	22000	18425	3575	49592
Jun-96	22000	18425	3575	53167
Jul-96	22000	18425	3575	56742
Aug-96	22000	18425	3575	60317
Sep-96	22000	18425	3575	63892

Exhibit No. 3B
Exxon Corporation
NMOCC Case No. 11468
Hrg. Date: February 15, 1996

New Mexico "S" State #13U With Proposed Tubb Allowable

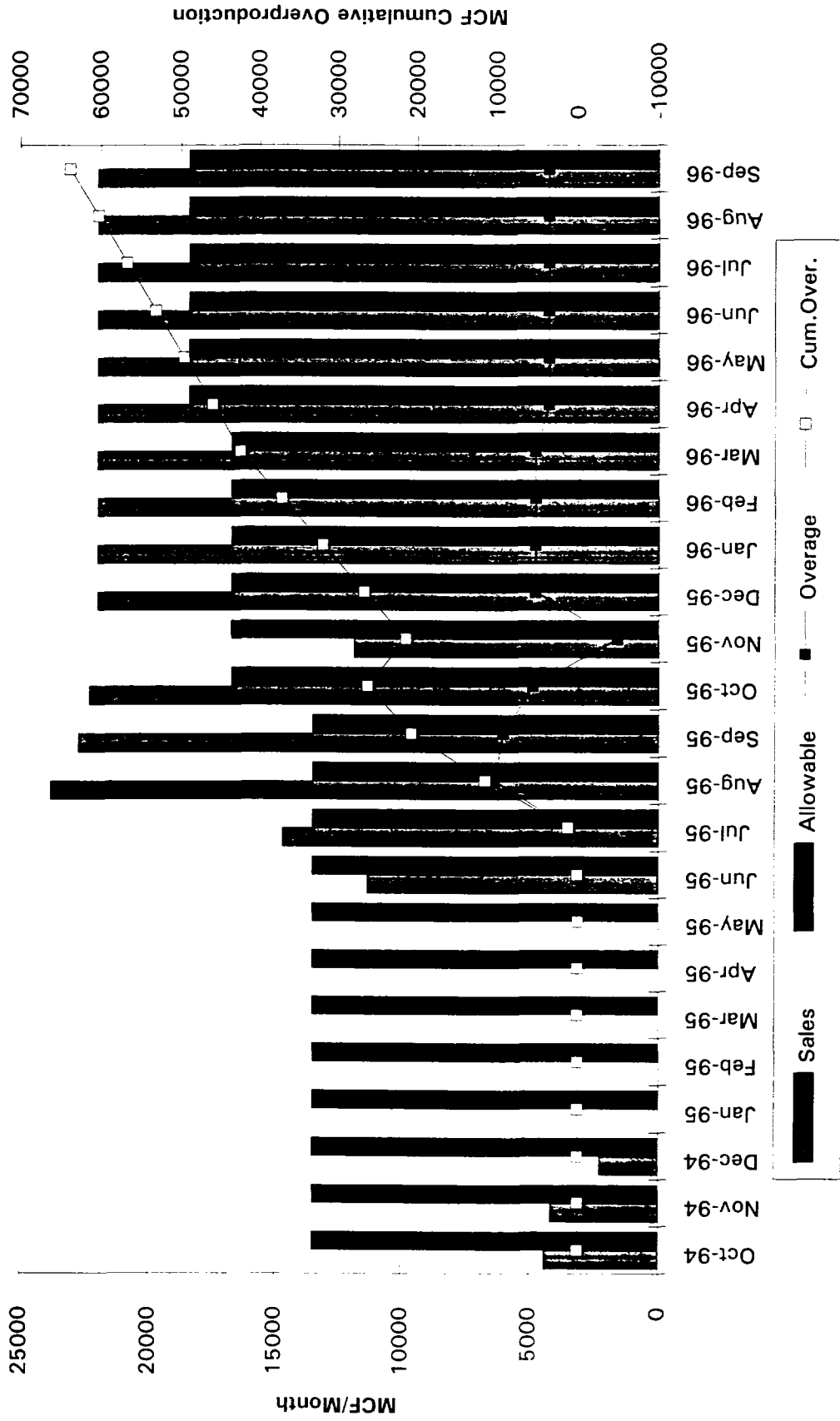


Exhibit No. **3C**
 Exxon Corporation
 NMOCC Case No. 11468
 Hrg. Date: February 15, 1996