



T 24 S R 26 E



T 25 S R 26 E

MATADOR ACREAGE

Scale 1:24000.



MATADOR PETROLEUM

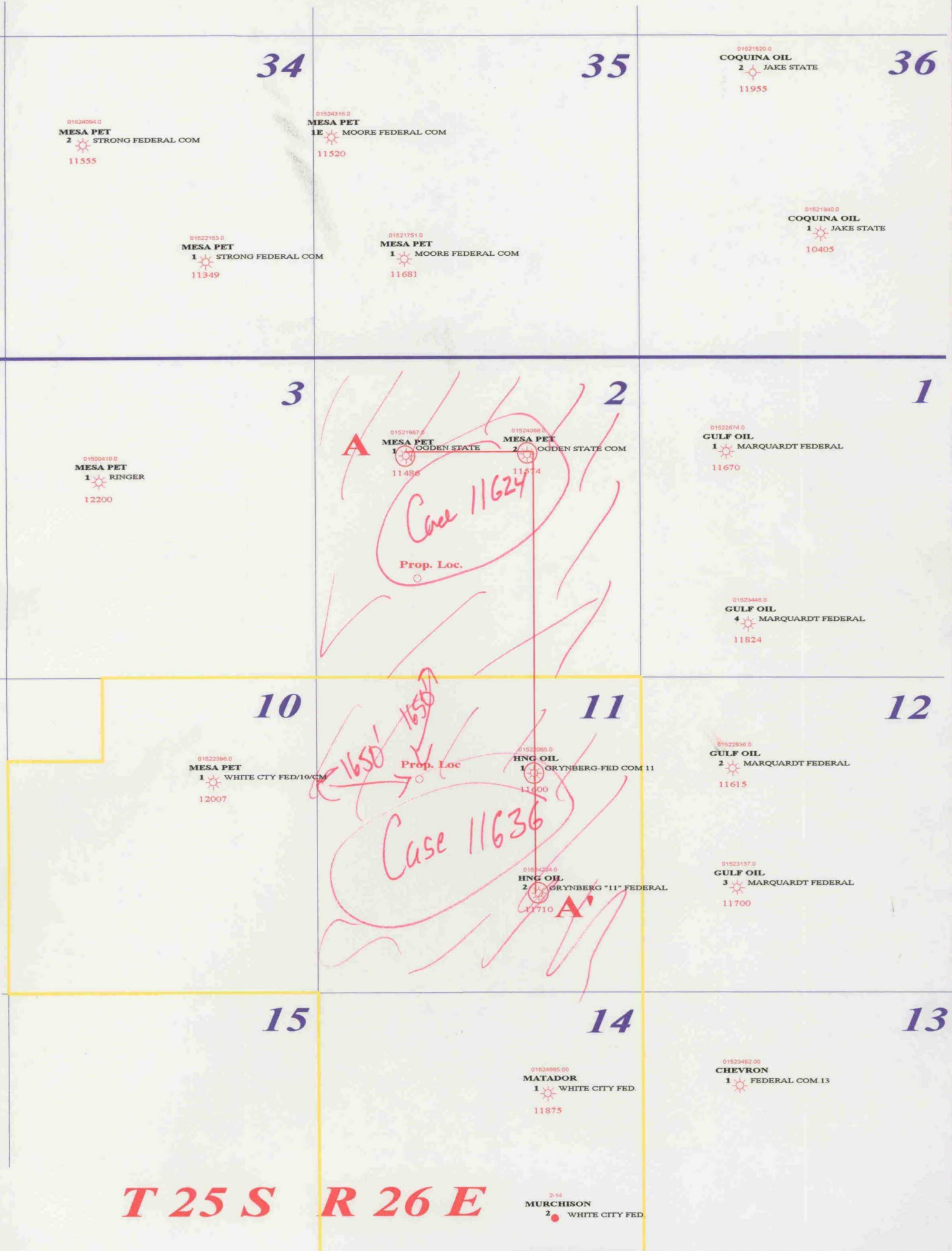
**WHITE CITY-MORROW
 EDDY CO., NEW MEXICO
 Morrow/Atoka Cum. Prod. - Current 3/96**

J.FREEMAN	BCF/ WELL	11/5/96
GEOLOGIST: K.MACHO	1" = 2000"	

BEFORE THE
OIL CONSERVATION DIVISION
 Case No. 11636 Exhibit No. 2
 Submitted By:
Matador Petroleum Company
 Hearing Date: November 7, 1996



T 24 S R 26 E



T 25 S R 26 E

— MATADOR ACREAGE

Scale 1:24000.



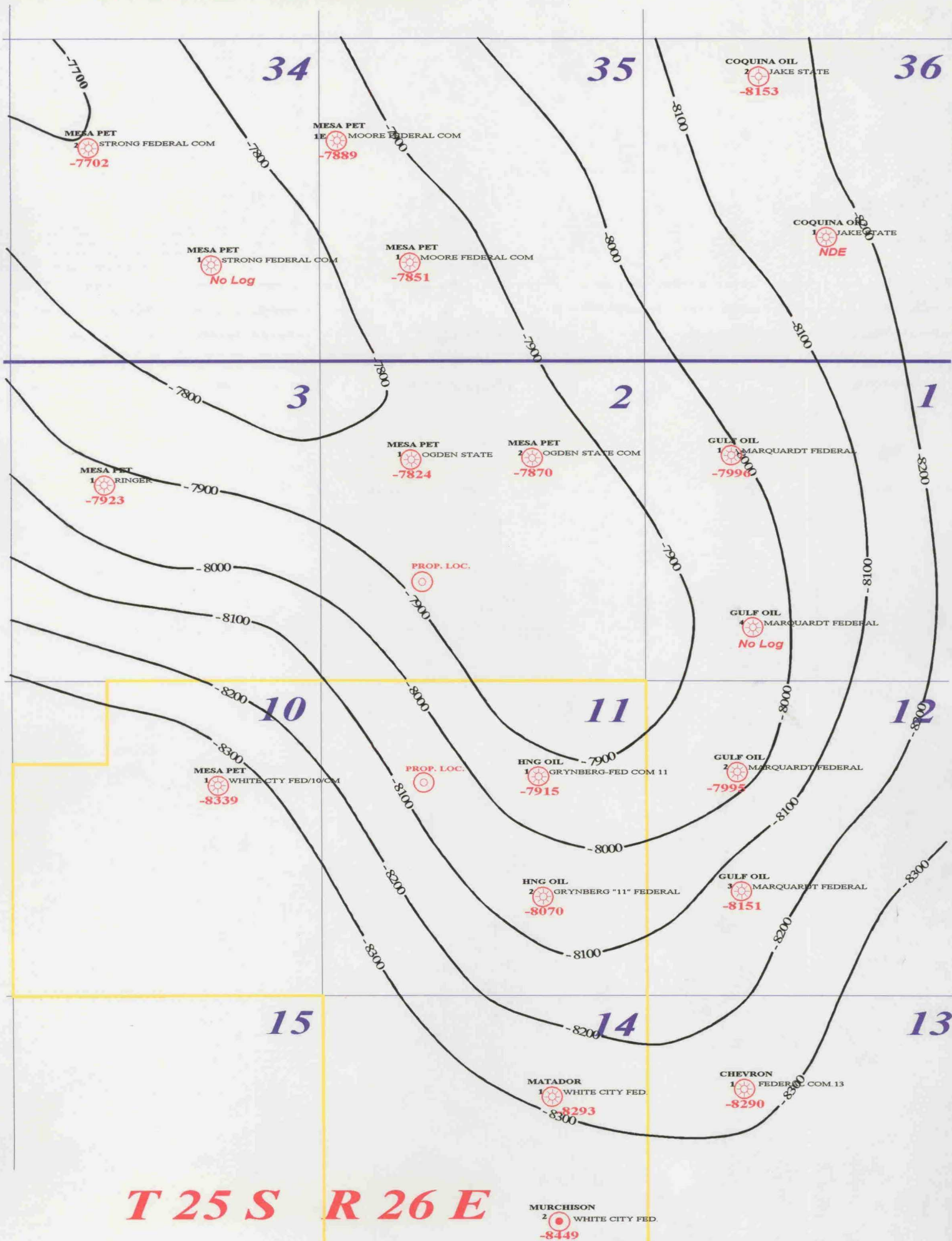
Matador MATADOR PETROLEUM <small>PETROLEUM CORPORATION DALLAS, TEXAS</small>	
WHITE CITY- MORROW EDDY CO., NEW MEXICO STRATAGRAPHIC CROSS-SECTION A - A'	
J.FREEMAN	11/5/96
GEOLOGIST: K. MACHO	Scale : 1" = 2000'

**LARGE FORMAT
EXHIBIT HAS
BEEN REMOVED
AND IS LOCATED
IN THE NEXT FILE**

BEFORE THE
OIL CONSERVATION DIVISION
 Case No. 11636 Exhibit No. 4
 Submitted By:
Matador Petroleum Company
 Hearing Date: November 7, 1996



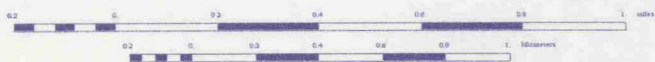
T 24 S R 26 E



T 25 S R 26 E

MATADOR ACREAGE

Scale 1:24000.



MURCHISON
 2 WHITE CTY FED.
 -8449



MATADOR PETROLEUM

**WHITE CITY- MORROW
 EDDY CO., NEW MEXICO
 STRUCTURE: Top Middle Morrow**

J.FREEMAN

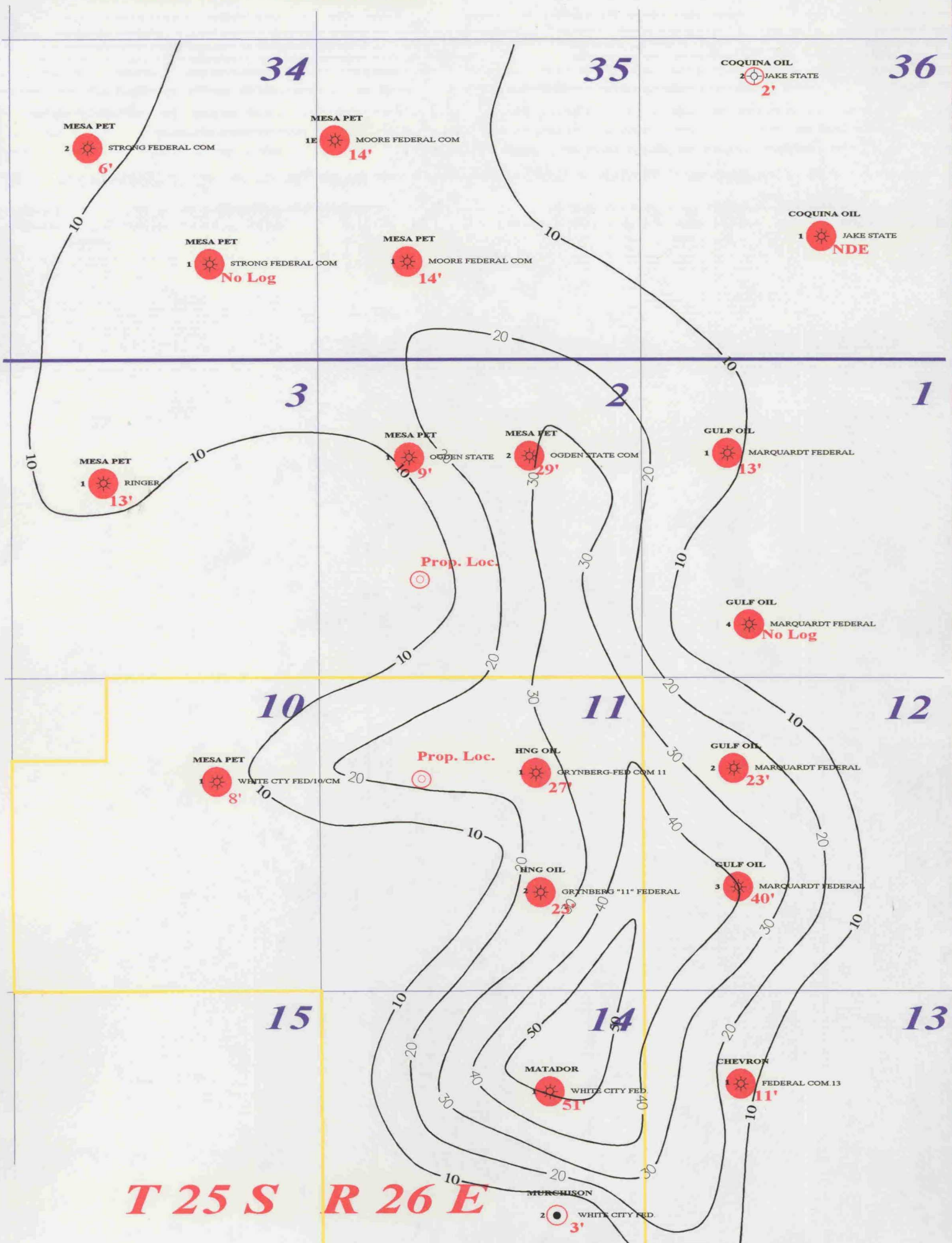
11/5/96

GEOLOGIST: K. MACHO

Scale: 1" = 2000'



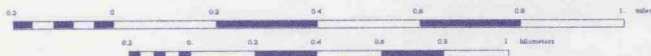
T 24 S R 26 E




T 25 S R 26 E

● Wells completed in this zone
 — MATADOR ACREAGE

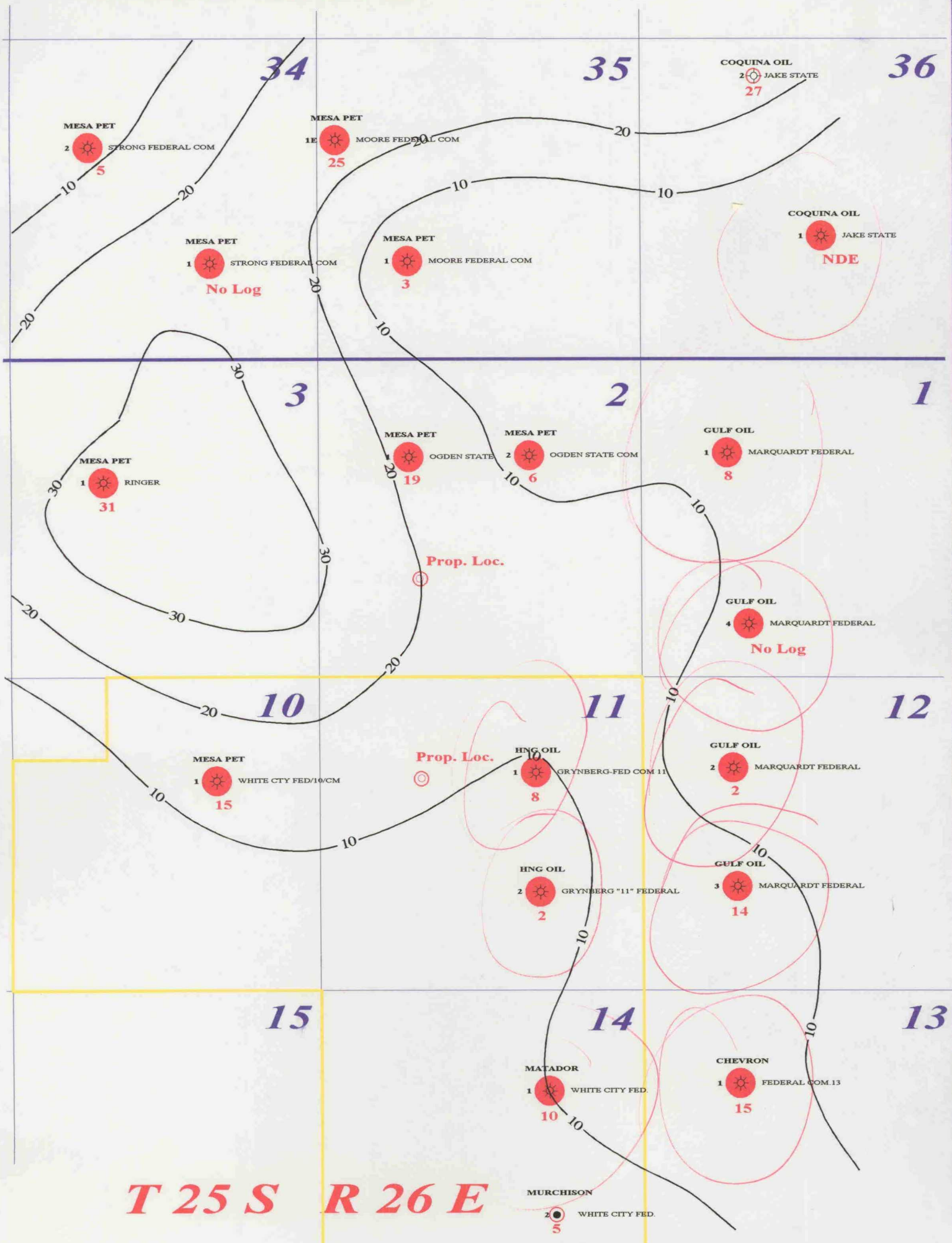
Scale 1:24000.





 MATADOR PETROLEUM		
WHITE CITY-MORROW EDDY CO., NEW MEXICO Net Isopach-U. Morrow/Atoka ($\theta_b \geq 8\%$)		
J.FREEMAN		11/5/96
GEOLOGIST: K.MACHO	1" = 2000'	C.I. = 10'



T 24 S R 26 E




T 25 S R 26 E

 **Wells completed in this zone**
 **MATADOR ACREAGE**

Scale 1:24000.



 MATADOR PETROLEUM		
WHITE CITY-MORROW EDDY CO., NEW MEXICO Net Isopach Middle Morrow ($\phi_b \geq 8\%$)		
J.FREEMAN		11/5/96
GEOLOGIST: K. MACHO	Scale: 1" = 2000'	C.I. = 10'

**ORIGINAL GAS IN PLACE
WHITE CITY FIELD
SECTIONS 2 & 11, T25S, R26E
EDDY COUNTY, NEW MEXICO**

	Section 2	Section 11
Isopach Volume of Reservoir (acre-ft)	21,644	20,187
Original Gas in Place (MMCF)	13,886	12,951
Recoverable Gas in Place (MMCF)	12,460	11,621
Production from Existing Wells (MMCF)	4,895	7,361
Exp. Ultimate from Existing Wells (MMCF)	5,167	7,897
Remaining Reserves to be Recovered (MMCF)	7,293	3,724

Assumptions:

Porosity: 8%
Water Saturation: 30%
Original Reservoir Pressure: 5200 psi **Bgi = > 263**
Abandonment Pressure: 500 psi **Bga = > 27**

$$\text{OGIP} = \cancel{4360} * \text{Volume} * \text{Porosity} * (1-\text{SW}) * \text{Bgi}$$

43,560

**BEFORE THE
OIL CONSERVATION DIVISION**
 Case No. 11636 Exhibit No. 7
 Submitted By:
Matador Production Company
 Hearing Date: November 7, 1996

**ESTIMATED DRAINAGE AREAS
WHITE CITY FIELD
SECTIONS 2 & 11, T25S, R26E
EDDY COUNTY, NEW MEXICO**

WELL	Expected Ultimate (mmcf)	Completed Net Pay (FT)	Average CrossPlot Porosity (%)	Drainage Areas (acres)
Grynberg 11 Fed Com 1	4483	33	7	270
Grynberg 11 Fed Com 2	3414	23	8	258
Ogden State No. 1	4067	30	9	209
Ogden State No. 2	1100	28	9	61

**BEFORE THE
OIL CONSERVATION DIVISION**
Case No. 11636 Exhibit No. 8
Submitted By:
Matador Production Company
Hearing Date: November 7, 1996

BEFORE THE
OIL CONSERVATION DIVISION

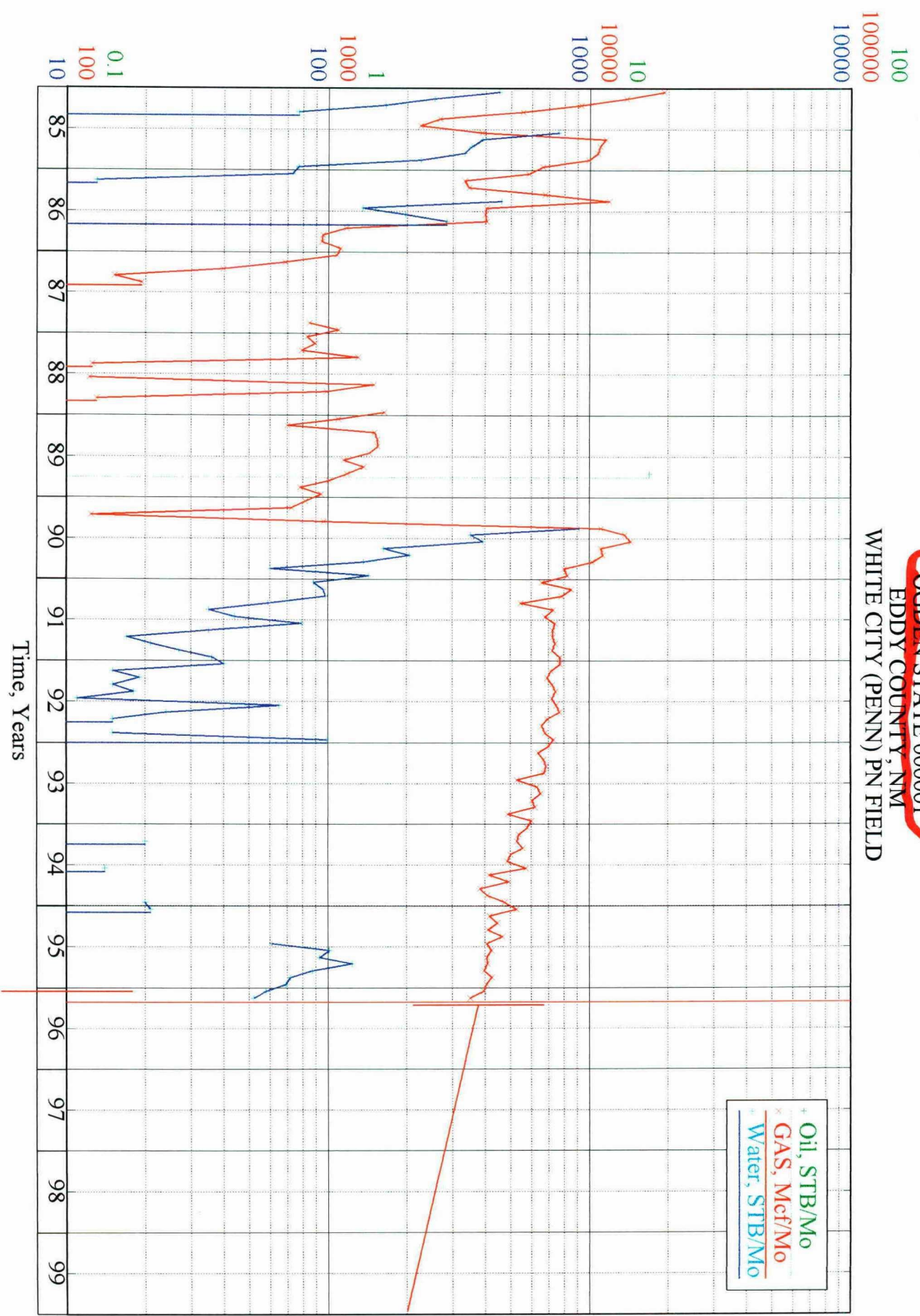
Case No. 11636 Exhibit No. 9

Submitted By:

Matador Petroleum Company

Hearing Date: November 7, 1996

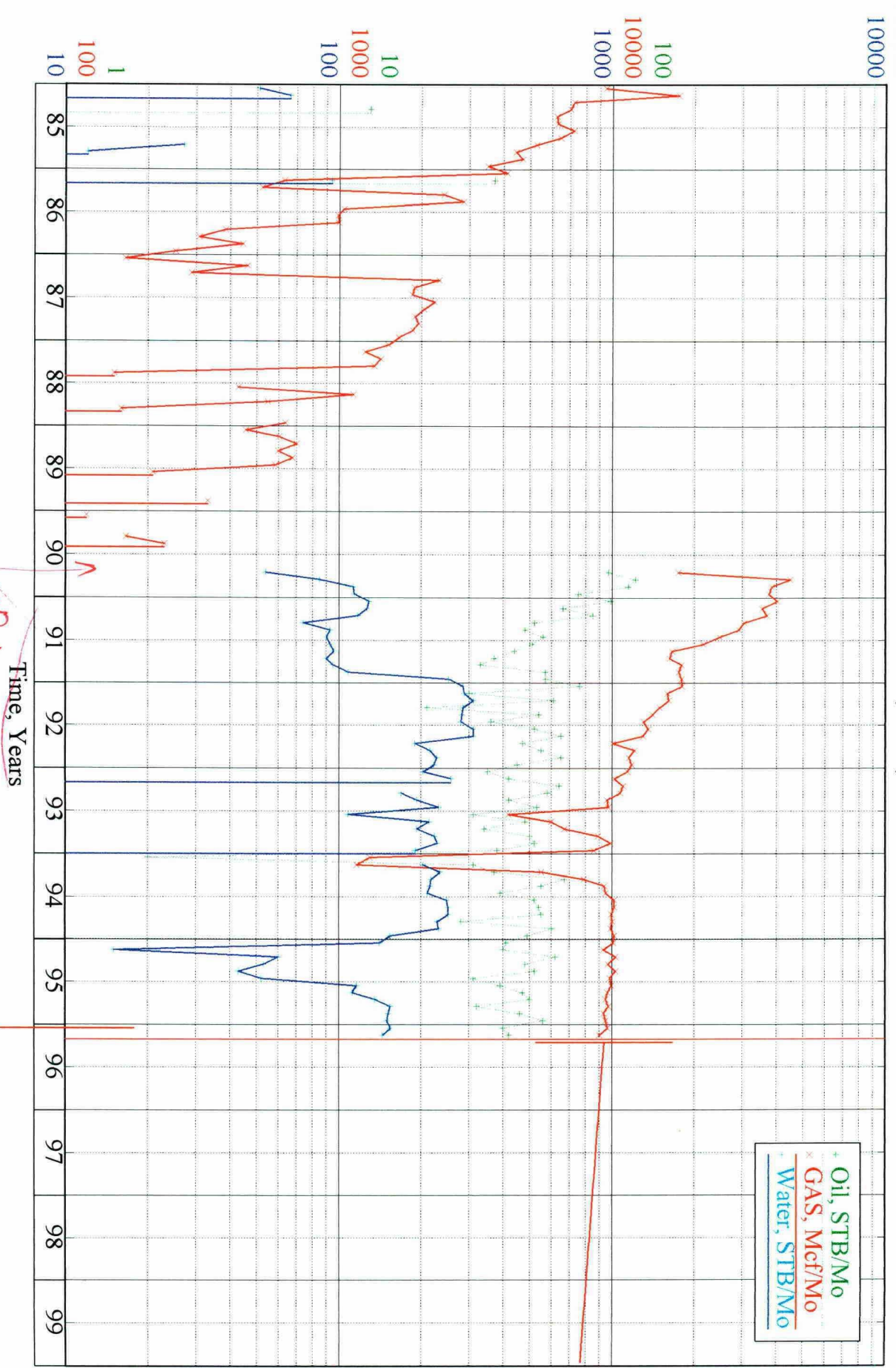
OGDEN STATE 000001
EDDY COUNTY, NM
WHITE CITY (PENN) PN FIELD



Oil, STB/Mo
Gas, Mcf/Mo
Water, STB/Mo

Time, Years

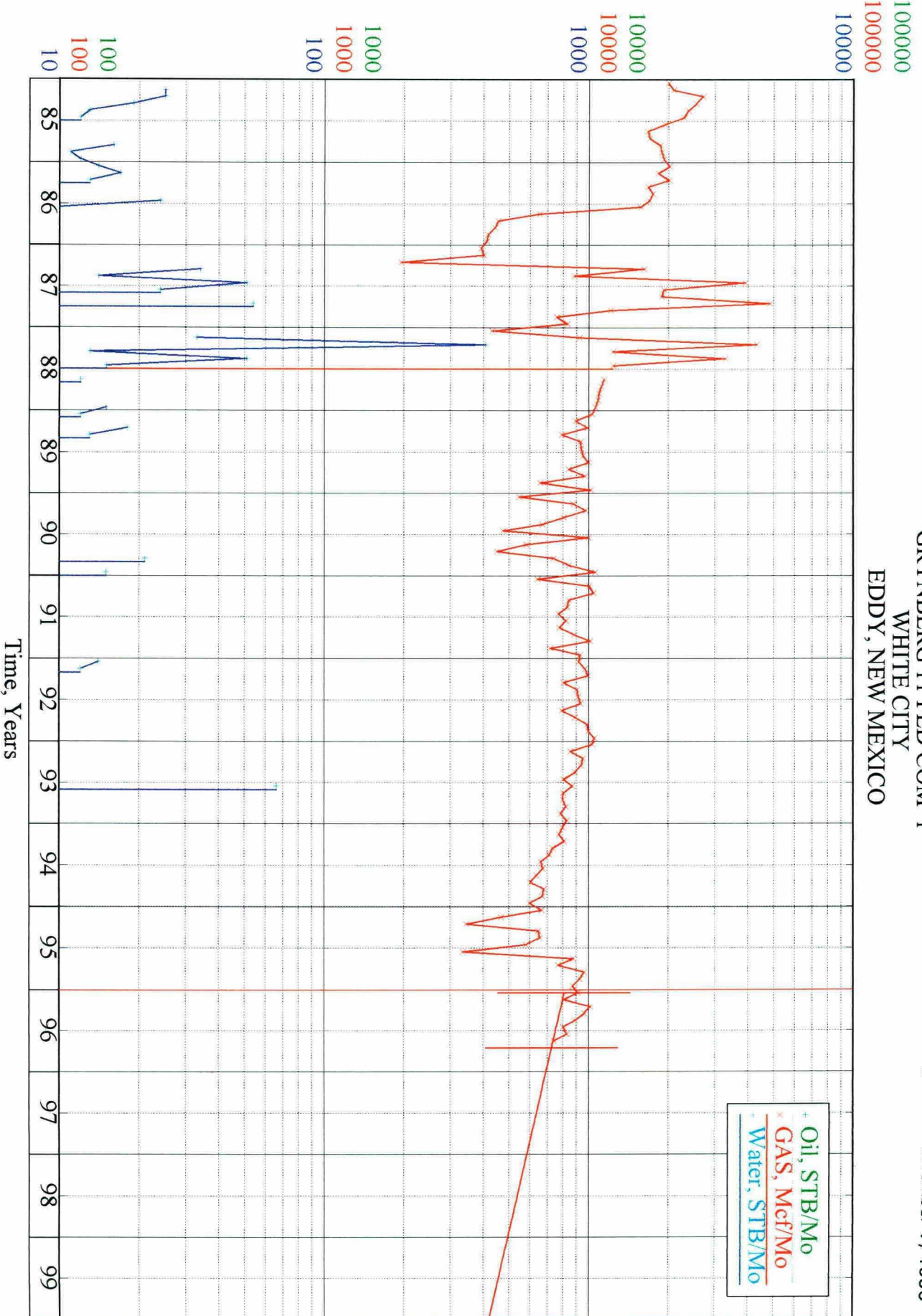
OGDEN STATE COM 000002
EDDY COUNTY, NM
WHITE CITY (PENN) PN FIELD



*Sold. 1990
Return
from
Mallin*

GRYNBERG 11 FED COM 1
 WHITE CITY
 EDDY, NEW MEXICO

BEFORE THE
OIL CONSERVATION DIVISION
 Case No. 11636 Exhibit No. //
 Submitted By:
Matador Production Company
 Hearing Date: November 7, 1996



GRYNBERG 11 FED COM 2
 WHITE CITY
 EDDY, NEW MEXICO

BEFORE THE
 OIL CONSERVATION DIVISION
 Case No. 11636 Exhibit No. 12
 Submitted By:
Matador Production Company
 Hearing Date: November 7, 1996

