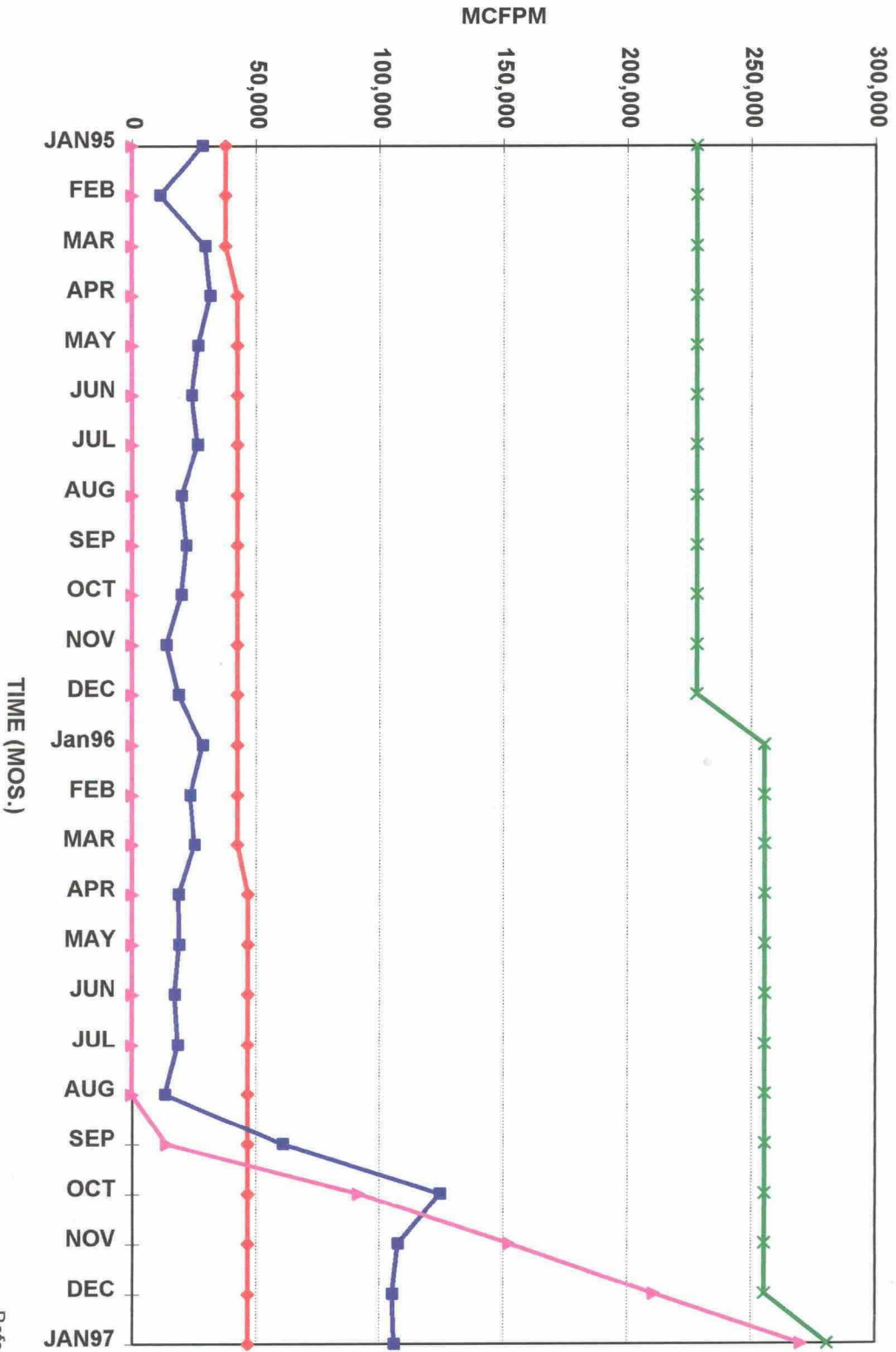


# LOU WORTHAN NOS. 12 & 21 GPU BLINEBRY GAS POOL - NE/4, SEC 11, T22S, R37E



◆ ALLOWABLE   
 ■ GAS SALES   
 ▲ CUM. OP   
 × 6x OP LIMIT

Before The  
 OIL CONSERVATION COMMISSION  
 Santa Fe, New Mexico  
 Case No. 11721    Exhibit No. 4  
 Submitted by: Marathon Oil Company  
 Hearing Date: 2/13/97