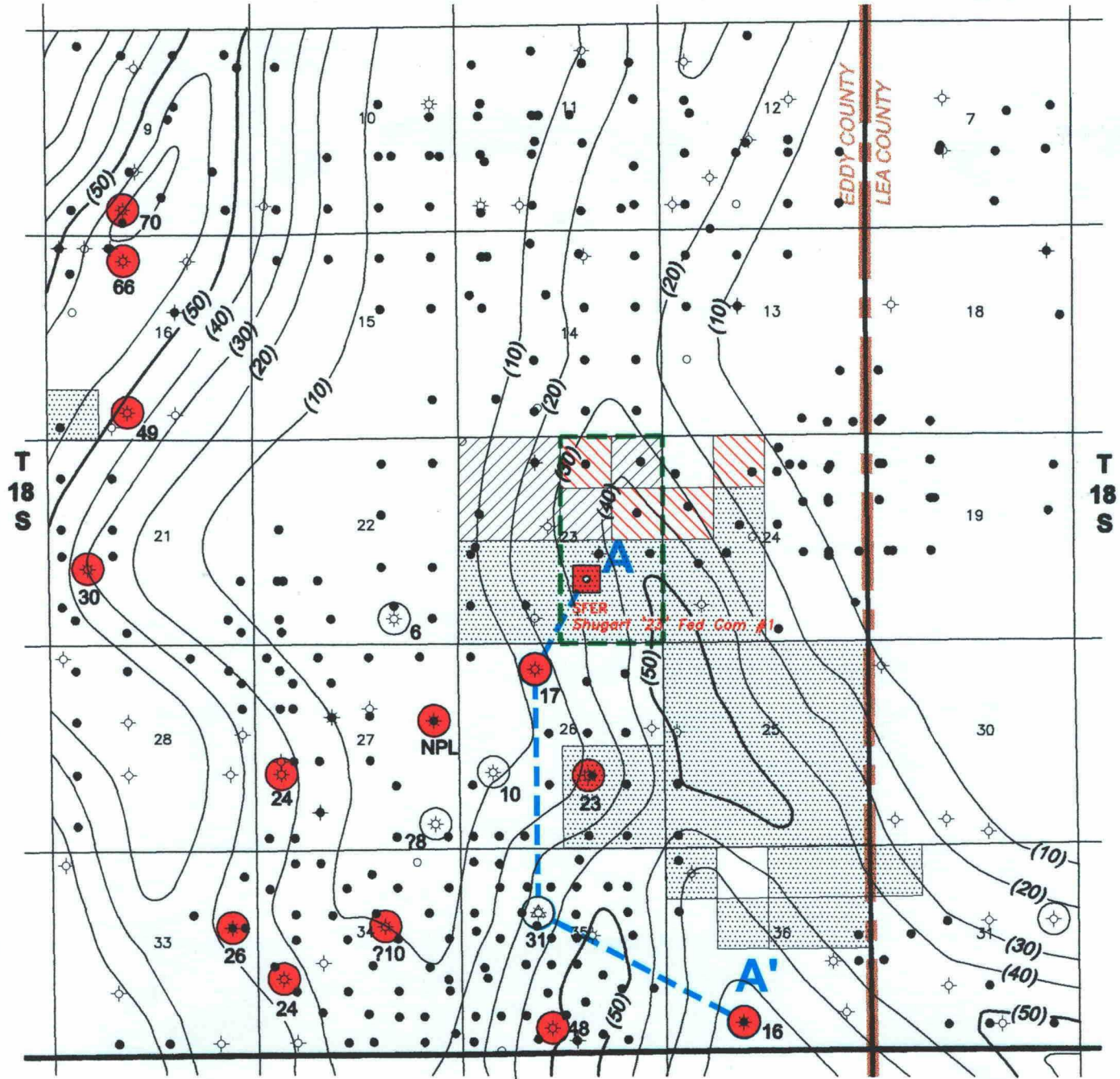



R-31-E

R-32-E



-  MIDDLE MORROW CONTROL
-  MIDDLE MORROW PRODUCER
-  PROPOSED LOCATION
-  320-Acre Standup
-  ANADARKO LEASEHOLD
-  ARCO FARMOUT
-  SFER LEASEHOLD

NEW MEXICO
 OIL CONSERVATION DIVISION
 EXHIBIT 7
 CASE NO. 12095



Santa Fe Energy Resources, Inc.
 CENTRAL DIVISION
 MIDLAND, TEXAS

NORTH LUSK PROSPECT
 Eddy & Lea Counties, New Mexico

ISOPACH MAP
 MIDDLE MORROW SANDS
 DENSITY $\rho \geq 7\%$

Geol. By: MDH/TJT
 Scale: 1" = 4000'

C.I.: 10'
 Date: 9-28-98

LUSK-N.DWG