

District I
PO Box 1980, Hobbs, NM 88241-1980
District II
PO Drawer DD, Artesia, NM 88211-0719
District III
1000 Rio Brazos Rd., Aztec, NM 87410
District IV
PO Box 2088, Santa Fe, NM 87504-2088

State of New Mexico
Energy, Minerals & Natural Resources Department

OIL CONSERVATION DIVISION
PO Box 2088
Santa Fe, NM 87504-2088

Form C-10
Revised February 10, 1999
Instructions on back
Submit to Appropriate District Office
State Lease - 6 Copies
Fee Lease - 5 Copies

AMENDED REPORT

APPLICATION FOR PERMIT TO DRILL, RE-ENTER, DEEPEN, PLUGBACK, OR ADD A ZONE

Operator Name and Address. Chesapeake Operating, Inc. P. O. Box 18496 Oklahoma City, OK 73154-0496		OGRID Number 147179
		API Number 30 - 0
Property Code	Property Name Teague 22	Well No. 1

Surface Location

UL or lot no.	Section	Township	Range	Lot Idn	Feet from the	North/South line	Feet from the	East/West line	County
F	22	16S	36E		2272'	North	2125	West	Lea

Proposed Bottom Hole Location If Different From Surface

UL or lot no.	Section	Township	Range	Lot Idn	Feet from the	North/South line	Feet from the	East/West line	County

Proposed Pool 1 Anderson Ranch Morrow Gas Field	Proposed Pool 2
--	-----------------

Work Type Code N	Well Type Code O/G	Cable/Rotary R	Lease Type Code S/F	Ground Level Elevation 3890'
Multiple NA	Proposed Depth 12,650'	Formation Morrow	Contractor Patterson #48	Spud Date 07/2000

Proposed Casing and Cement Program

Hole Size	Casing Size	Casing weight/foot	Setting Depth	Sacks of Cement	Estimated TOC
17-1/2"	13-3/8"	48#/54.5#	450'	500	Surface
12-1/4"	9-5/8"	40#	4,300'	1400	Surface
7-7/8"	5-1/2"	17#/20#	12,650'	1700	4,000'

Describe the proposed program. If this application is to DEEPEN or PLUG BACK give the data on the present productive zone and proposed new productive zone. Describe the blowout prevention program, if any. Use additional sheets if necessary.

Chesapeake Operating, Inc. proposes to drill to 12,650' T.D. in the Lower Mississippi with Patterson Rig 48 as the drilling contractor.

Patterson's BOP stack consists of 11" 5M# blind, pipe & annular.

I hereby certify that the information given above is true and complete to the best of my knowledge and belief.

Signature: *Barbara J. Bale*

Printed name:
Barbara J. Bale

Title:
Regulatory Analyst

Date:

Phone:

OIL CONSERVATION DIVISION

Approved by:

Title:

Approval Date:

Expiration Date:

Conditions of Approval:

DISTRICT I
P.O. Box 1800, Hobbs, NM 88241-1900

State of New Mexico
Energy, Minerals and Natural Resources Department

Form C-102
Revised February 10, 1994
Submit to Appropriate District Office
State Lease - 4 Copies
Fee Lease - 3 Copies

DISTRICT II
P.O. Drawer DD, Artesia, NM 88211-0719

OIL CONSERVATION DIVISION
P.O. Box 2088

DISTRICT III
1000 Rio Hrazos Rd., Aztec, NM 87410

Santa Fe, New Mexico 87504-2088

DISTRICT IV
P.O. BOX 2088, SANTA FE, N.M. 87504-2088

AMENDED REPORT

WELL LOCATION AND ACREAGE DEDICATION PLAT

API Number	Pool Code	Pool Name
		Anderson Ranch Morrow Gas Field
Property Code	Property Name	Well Number
	TEAGUE 22	1
OGRID No.	Operator Name	Elevation
147179	CHESAPEAKE OPERATING, INC.	3890

Surface Location

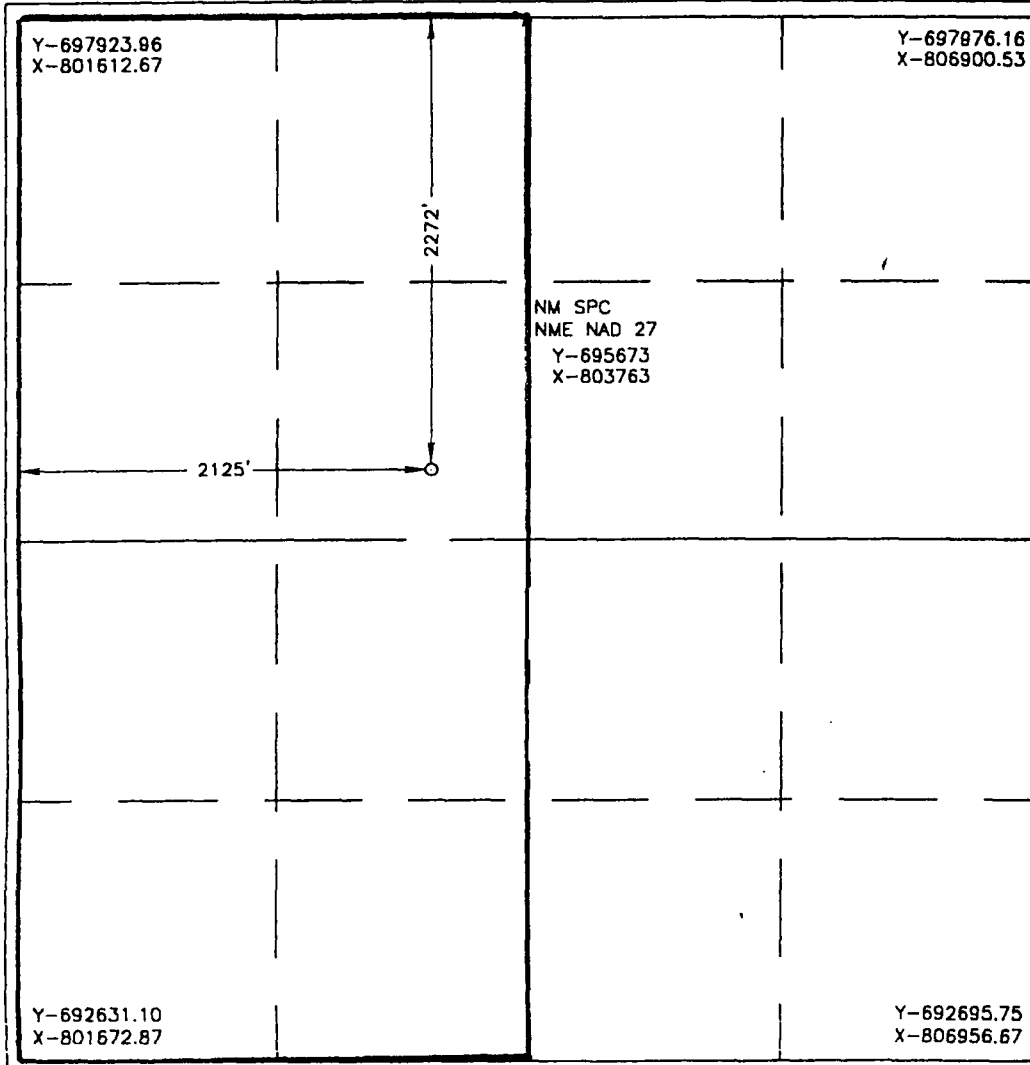
UL or lot No.	Section	Township	Range	Lot Idn	Feet from the	North/South line	Feet from the	East/West line	County
F	22	16 S	36 E		2272	NORTH	2125	WEST	LEA

Bottom Hole Location If Different From Surface

UL or lot No.	Section	Township	Range	Lot Idn	Feet from the	North/South line	Feet from the	East/West line	County

Dedicated Acres	Joint or Infill	Consolidation Code	Order No.
320			

NO ALLOWABLE WILL BE ASSIGNED TO THIS COMPLETION UNTIL ALL INTERESTS HAVE BEEN CONSOLIDATED OR A NON-STANDARD UNIT HAS BEEN APPROVED BY THE DIVISION



OPERATOR CERTIFICATION

I hereby certify that the information contained herein is true and complete to the best of my knowledge and belief.

Barbara J. Bale
Signature

Barbara J. Bale
Printed Name

Regulatory Analyst
Title

02/23/2000
Date

SURVEYOR CERTIFICATION

I hereby certify that the well location shown on this plat was plotted from field notes of actual surveys made by me or under my supervision, and that the same is true and correct to the best of my belief.

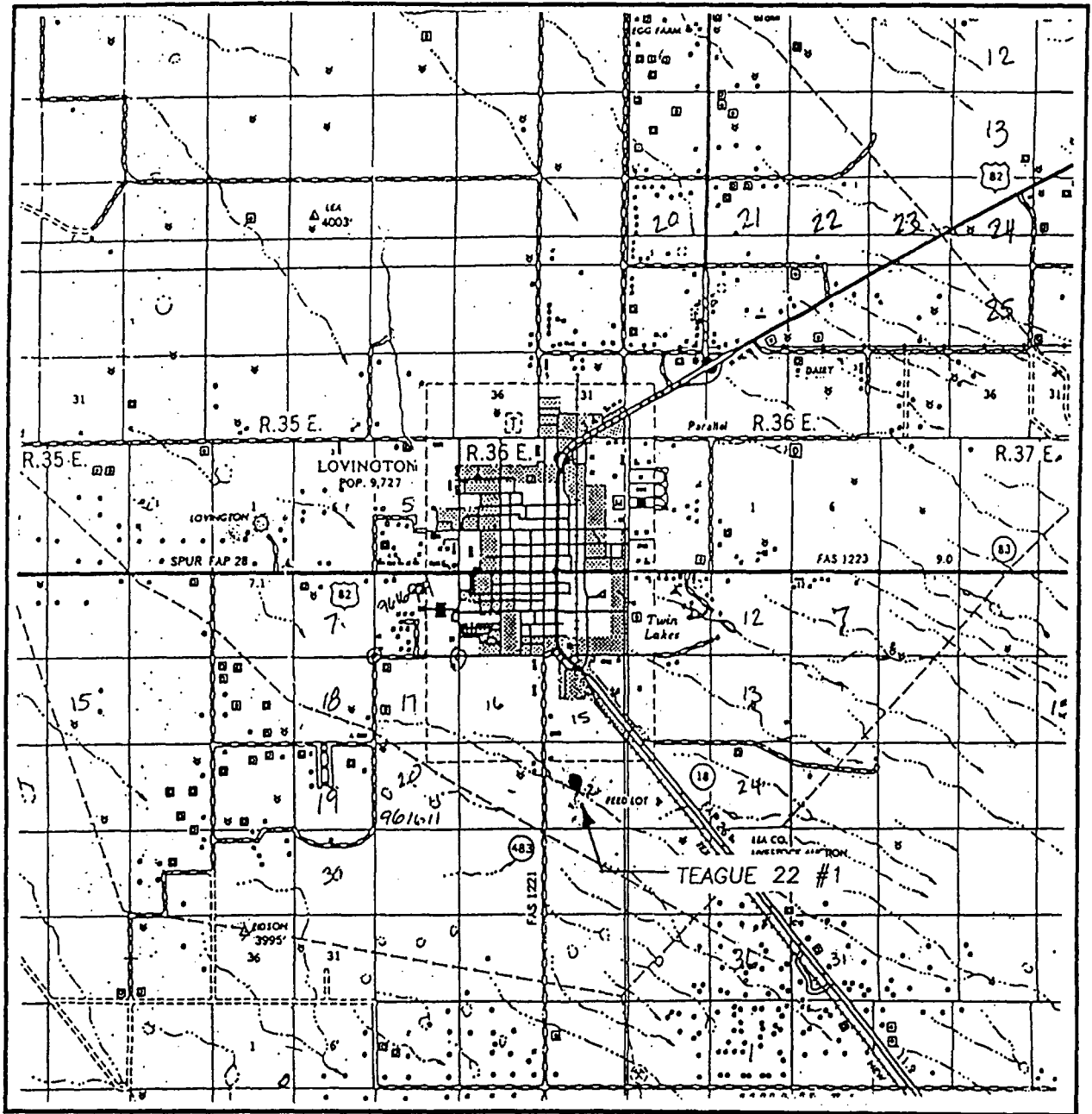
FEBRUARY 9, 2000

Date Surveyed DC
Signature & Seal of Professional Surveyor

Ronald J. Eidson 2/18/2000
00-11-0195

Certificate No. RONALD J. EIDSON 3239
GARY EIDSON 12841
MACON, McDONALD 12185

VICINITY MAP

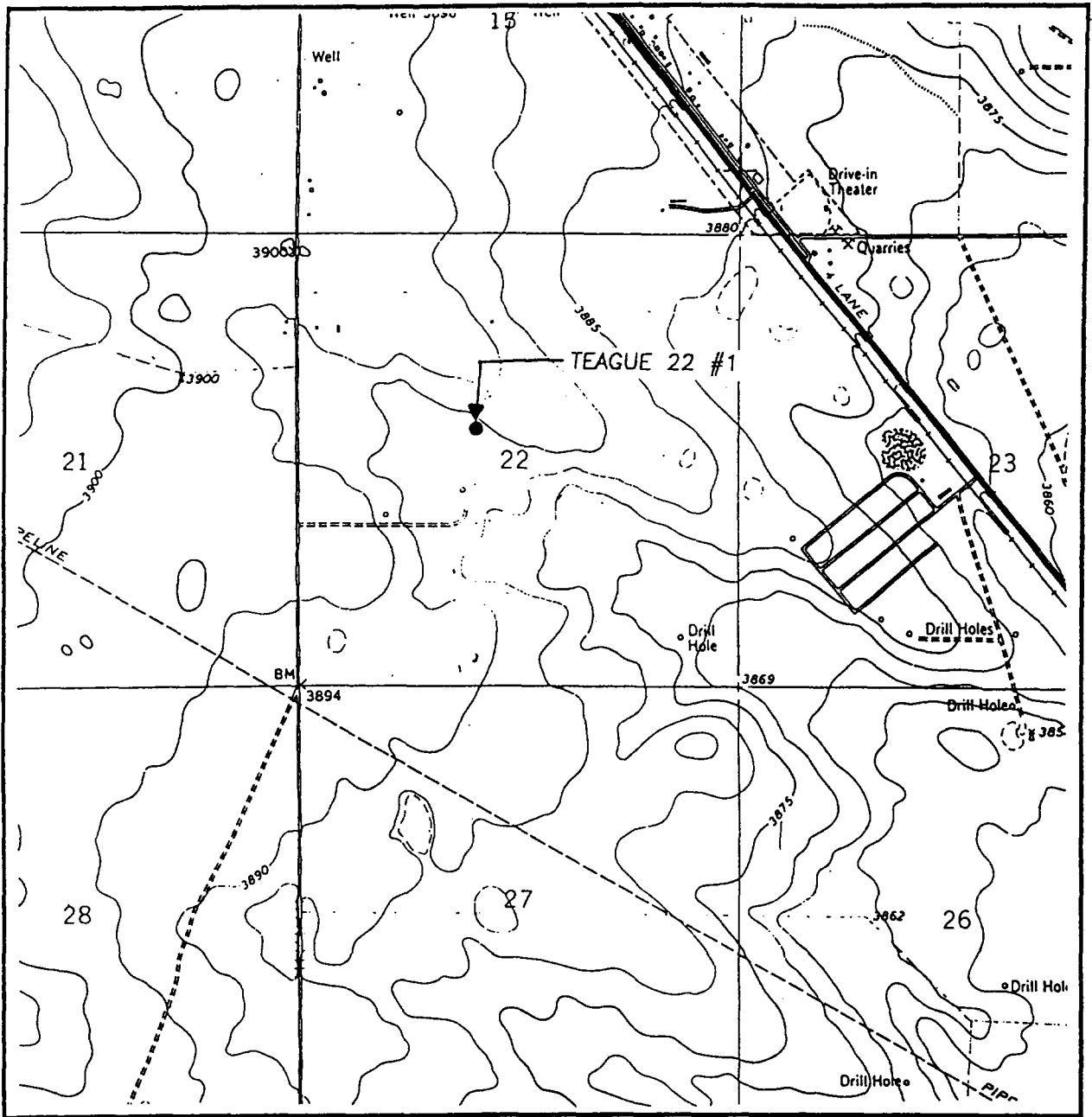


SCALE: 1" = 2 MILES

SEC. 22 TWP. 16-S RGE. 36-E
 SURVEY N.M.P.M.
 COUNTY LEA
 DESCRIPTION 2272' FNL & 2125' FWL
 ELEVATION 3890
 OPERATOR CHESAPEAKE OPERATING, INC.
 LEASE TEAGUE 22

JOHN WEST SURVEYING
HOBBS, NEW MEXICO
(505 393-3117)

LOCATION VERIFICATION MAP



SCALE: 1" = 2000'

CONTOUR INTERVAL:
LOVINGTON - 5'

SEC. 22 TWP. 16-S RGE. 36-E

SURVEY N.M.P.M.

COUNTY LEA

DESCRIPTION 2272' FNL & 2125' FWL

ELEVATION 3890

OPERATOR CHESAPEAKE OPERATING, INC.

LEASE TEAGUE 22

U.S.G.S. TOPOGRAPHIC MAP
LOVINGTON, N.M.

JOHN WEST SURVEYING
HOBBS, NEW MEXICO
(505 393-3117)

BLOWOUT PREVENTOR SCHEMATIC

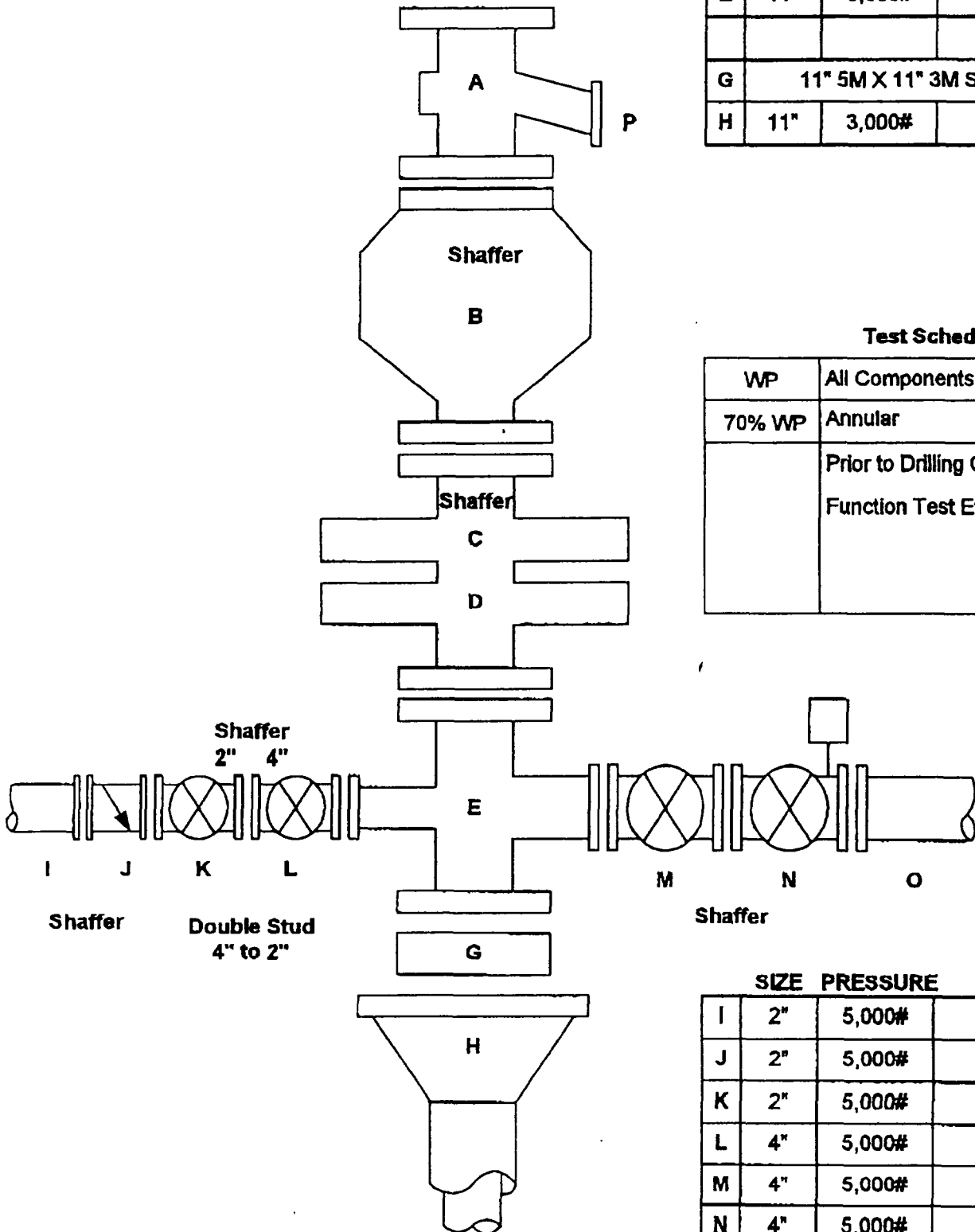
CHESAPEAKE OPERATING INC

WELL : TEAGUE 1-22
 FIELD : LOVINGTON PROJECT AREA
 RIG : PATTERSON #48
 COUNTY : LEA STATE : NEW MEXICO
 OPERATION: DRILLING OUT BELOW 9 5/8" CASING

	SIZE	PRESSURE	DESCRIPTION
A	13"		Bell Nipple
B	11"	5,000#	Annular
C	11"	5,000#	4-1/2" Pipe Rams
D	11"	5,000#	Blind Rams
E	11"	5,000#	Drilling Spool
G	11" 5M X 11" 3M Spool 14" tall		
H	11"	3,000#	Bradenhead

Test Schedule

WP	All Components
70% WP	Annular
	Prior to Drilling Out
	Function Test Every Trip



	SIZE	PRESSURE	DESCRIPTION
I	2"	5,000#	Kill Line
J	2"	5,000#	Check Valve
K	2"	5,000#	Gate Valve
L	4"	5,000#	Gate Valve
M	4"	5,000#	Gate Valve
N	4"	5,000#	Gate Valve
O	4"	5,000#	Choke Line
P	12"		Flow Line

CHESAPEAKE OPERATING INC

DRILLING PROGNOSIS

WELL : TEAGUE 1-22
 LOCATION : 2,274' FNL & 2,134' FWL SECTION 22-16S-36E
 BHL : TARGET 55' RADIUS
 COUNTY : LEA STATE : NEW MEXICO
 FIELD : LOVINGTON PROJECT AREA

HOLE SIZE	FORMATION TOPS	LOGGING PROGRAM	CASING & CEMENT	MUD WT
17 1/2"	450'	TOC on 13-3/8" @ surface 13 3/8" 54.5# CONDUCT.	13-3/8" SURFACE CSG: LEAD: Class C + 2% CaCl ₂ 14.8 ppg, 1.34 yield	0-450' Surface to 450' 8.6# - 9.4# 34-36 VIS NC <5% Solids
12 1/4"	4,300'	TOC on 9-5/8" @ surface TOC on 5-1/2" @ 4,000'. 9 5/8" 40# J-55 LTC INT. CSG.	9-5/8" INTERMEDIATE CSG: LEAD: 35:65 POZ: Class C + 5% Salt + 6% Bentonite + 0.25 pps Cellulose, 12.4 ppg, 2.15 yield TAIL: Class C + 1% CaCl ₂ , 14.8 ppg, 1.33 yield	450'-4,700' 8.4# - 10.1# 32-34 VIS NC <1% Solids
7 7/8"	4,861'	SAN ANDRES	Two Man/Mudlogger on location @ Intermediate	
	6,297'	GLORIETTA		
	6,875'	PADDUCK/BLINBERRY		4,700'-10,700'
	7,531'	TUBB		8.4# - 8.5# 28-29 VIS nc <1% Solids
	8,150'	DV TOOL		
	8,203'	ABO	Natural GR, Density, Neutron & Pa from TD to intermediate, then GR & Neutron to 200'; High Res Induc & Micro + Comp Sonic from TD to Intermediate	
	8,539'	WOLFCAMP LIMESTONE		
	10,368'	WOLFCAMP "W2"		
	10,681'	AUGUSTA ZONE		10,700'-11,400'
	10,981'	CISCO SHALE		8.5# - 8.7# 32-36 VIS Below 20 cc <5% Solids
	11,430'	STRAWN		
	11,445'	STRAWN POROSITY	5-1/2" PRODUCTION CSG: 1st STAGE LEAD: 35:65 POZ: Class H + 5% Salt + 6% Bentonite Gel + 0.3% , 12.8 ppg, 1.95 yield	
	11,550'	STRAWN CLASTICS	1st STAGE TAIL: 2 gps Salt + 2% Bentonite Gel + 0.05gps Antifoamer + 0.2% Midtemp retarder + 0.02 gps Dispersant + 0.75% Fluid Loss. 13.5 ppg, 1793 yield.	11,400'-12,650'
	11,592'	ATOKA SHALE	2nd STAGE LEAD: 35:65 POZ: Class C + 5% Salt + 0.1% 12.8 ppg, 1.94 yield.	8.7# - 9.0# 40-50 VIS 10-8 cc <5% Solids
	11,652'	ATOKA CLASTICS	TAIL: Neat, 15.6 ppg, 1.18 yield	
	11,883'	"BRUNSON" SHALE		
	12,041'	MORROW LIMESTONE		
	12,224'	CHESTER SHALE		
	12,335'	CHESTER LIMESTONE		
	12,443'	LOWER MISSISSIPPIAN		
	12,650'	5 1/2" 17# N-80 LTC Cag.		

PREPARED BY: KARLA ALLFORD

DATE: 2-22-00

APPROVED BY: DAVE AULT

DATE: 2-22-00