

NUMBER OF COPIES RECEIVED	
DISTRIBUTION	
SANTA FE	
FILE	
U.S.G.S	
LAND OFFICE	
TRANSPORTER	OIL GAS
PRODUCTION OFFICE	
OPERATOR	

NEW MEXICO OIL CONSERVATION COMMISSION
Santa Fe, New Mexico

Form C-101
Revised (12/1/55)

NOTICE OF INTENTION TO DRILL

Notice must be given to the District Office of the Oil Conservation Commission and approval obtained before drilling or recompletion begins. If changes in the proposed plan are considered advisable, a copy of this notice showing such changes will be returned to the sender. Submit this notice in **QUINTUPLICATE**. One copy will be returned following approval. See additional instructions in Rules and Regulations of the Commission. **If State Land submit 6 Copies Attach Form C-128 in triplicate to first 3 copies of form C-101**

Farmington, New Mexico

(Place)

April 20, 1964

(Date)

OIL CONSERVATION COMMISSION
SANTA FE, NEW MEXICO

Gentlemen:

You are hereby notified that it is our intention to commence the Drilling of a well to be known as
Southern Union Production Company

(Company or Operator)

Tijeras Canyon Unit

(Lease)

Well No. 3

in D (Unit)

The well is

located 985.7 feet from the North line and 902 feet from the West line of Section 12, T. 10 North, R. 5 East, NMPM.

(GIVE LOCATION FROM SECTION LINE)

Bernalillo County

985.7/N line & 902/W line

If State Land the Oil and Gas Lease is No.

If patented land the owner is Mrs. Katherine M. Wright

Address 508 Solano Drive, S.E. Albuquerque, New Mexico

We propose to drill well with drilling equipment as follows: Rotary tools will be used from surface to total depth.

The status of plugging bond is Statewide

Drilling Contractor G. B. Reames Well Service

Drawer "F" - Astec, New Mexico

We intend to complete this well in the Dakota and/or Entrada formation at an approximate depth of 2300 feet.

CASING PROGRAM

We propose to use the following strings of Casing and to cement them as indicated:

Size of Hole	Size of Casing	Weight per Foot	New or Second Hand	Depth	Sacks Cement
12-1/4"	8-5/8"	24.0	New	400 ft.	300 Sx.
7-7/8"	5-1/2"	15.5	New	2300 ft.	700 Sx.

If changes in the above plans become advisable we will notify you immediately.

ADDITIONAL INFORMATION (If recompletion give full details of proposed plan of work.)

This well will be drilled to determine the feasibility of using the Dakota and or Entrada formation for the Storage of Natural Gas.

Approval for drilling only. Authority to use well for gas storage must be obtained after notice and hearing.

Approved April 24, 1964
Except as follows:

Sincerely yours,

SOUTHERN UNION PRODUCTION COMPANY
(Company or Operator)

By Gilbert D. Noland

Position Drilling Superintendent
Send Communications regarding well to

Name L. S. Muennink

Address P. O. Box 808 - Farmington, N.M.

COLLECT AND SACK SAMPLES FOR

NEW MEXICO BUREAU OF MINES, SOCORRO

AT AT LEAST TEN FOOT INTERVALS

OIL CONSERVATION COMMISSION

By E. Kaptein

NUMBER OF COPIES RECEIVED	
DISTRIBUTION	
SANTA FE	
FILE	
USGS	
LAND OFFICE	
TRANSPORTER	OIL
	GAS
PRODUCTION OFFICE	
OPERATOR	

NEW MEXICO OIL CONSERVATION COMMISSION
WELL LOCATION AND ACREAGE DEDICATION PLAT
 SEE INSTRUCTIONS FOR COMPLETING THIS FORM ON THE REVERSE SIDE

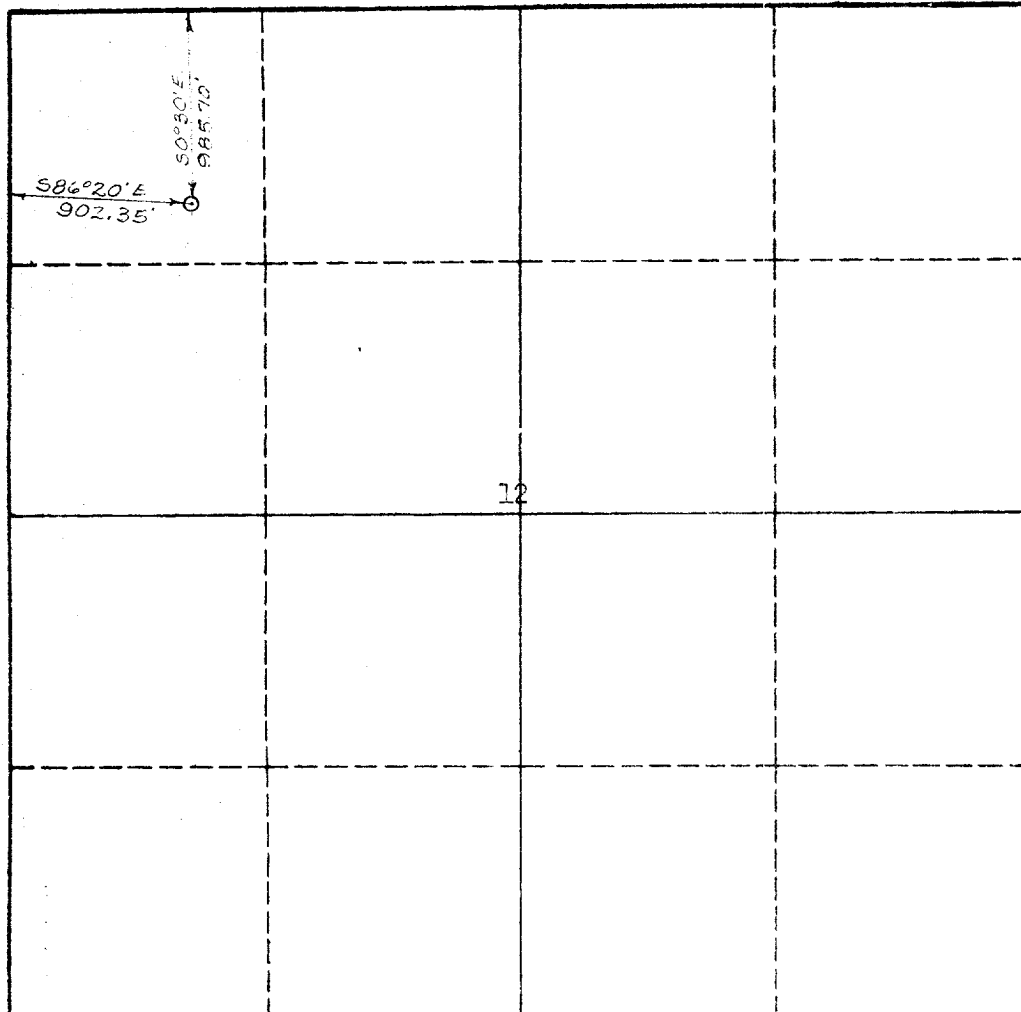
FORM C-128
 Revised 5/1/57

Operator Southern Union Production Company		Lease Tijeras Canyon Unit		Well No. 3
Unit Letter D	Section 12	Township 10 North	Range 3 East	County Bernalillo
Actual Footage Location of Well: 902.35 feet from the West line and 985.70 feet from the North line				
Ground Level Elev. 6618	Producing Formation	Pool	Dedicated Acreage: Acres	

1. Is the Operator the only owner in the dedicated acreage outlined on the plat below? YES XX NO ____ . ("Owner" means the person who has the right to drill into and to produce from any pool and to appropriate the production either for himself or for himself and another. (65-3-29 (e) NMSA 1955 Comp.)
2. If the answer to question one is "no," have the interests of all the owners been consolidated by communitization agreement or otherwise? YES ____ NO ____ . If answer is "yes," Type of Consolidation ____
3. If the answer to question two is "no," list all the owners and their respective interests below:

Owner	Land Description

SECTION B



CERTIFICATION

I hereby certify that the information in SECTION A above is true and complete to the best of my knowledge and belief.

Name
 Gilbert D. Noland, Jr.
 Position
 Drilling Superintendent
 Company
 Southern Union Production Co.
 Date
 April 22, 1964

I hereby certify that the well location shown on the plat in SECTION B was plotted from field notes of actual surveys made by me or under my supervision, and that the same is true and correct to the best of my knowledge and belief.

Date Surveyed
 April 20, 1964
 Registered Professional Engineer and/or Land Surveyor
 Certificate No.
 2127

0 330 660 990 1320 1650 1980 2310 2640 2000 1500 1000 500 0