

CONFIDENTIAL

UNITED STATES  
DEPARTMENT OF THE INTERIOR  
GEOLOGICAL SURVEY

Form Approved

May 03 1982

SUNDRY NOTICES AND REPORTS ON WELLS

(Do not use this form for proposals to drill or to deepen or plug back to a different reservoir. Use Form 9-331-C for such proposals.)

1. oil ☐ gas ☒ other ☐
2. NAME OF OPERATOR  
Shell Oil Company
3. ADDRESS OF OPERATOR  
ATTN: P.G. Gering  
P.O. Box 831 Houston, Tx 77001 RM # 6459 WCK
4. LOCATION OF WELL (REPORT LOCATION CLEARLY. See space 17 below.)  
AT SURFACE: 1520' FNL + 1000' FEL Sec. 24  
AT TOP PROD. INTERVAL:  
AT TOTAL DEPTH:
16. CHECK APPROPRIATE BOX TO INDICATE NATURE OF NOTICE, REPORT, OR OTHER DATA

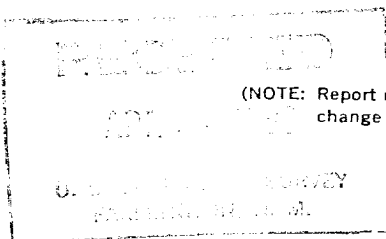
5. LEASE  
NM-1294 OIL CONSERVATION DIVISION
6. IF INDIAN, ALLOTTEE OR TRIBE NAME  
SANTA FE
7. UNIT AGREEMENT NAME  
WEST MESA UNIT
8. FARM OR LEASE NAME  
FEDERAL
9. WELL NO.  
1-24A
10. FIELD OR WILDCAT NAME  
WEST MESA FEDERAL 1-24A
11. SEC., T., R., M., OR BLK. AND SURVEY OR AREA  
SE 1/4 NE 1/4 T11N R1E
12. COUNTY OR PARISH  
BERNALILLO
13. STATE  
NEW MEXICO
14. API NO.
15. ELEVATIONS (SHOW DF, KDB, AND WD)  
5797' KB

REQUEST FOR APPROVAL TO:

- TEST WATER SHUT-OFF ☐  
FRACTURE TREAT ☐  
SHOOT OR ACIDIZE ☒  
REPAIR WELL ☐  
PULL OR ALTER CASING ☐  
MULTIPLE COMPLETE ☐  
CHANGE ZONES ☒  
ABANDON\* ☐  
(other)

SUBSEQUENT REPORT OF:

- ☐  
☐  
☐  
☐  
☐  
☐  
☐  
☒



(NOTE: Report results of multiple completion or zone change on Form 9-330.)

17. DESCRIBE PROPOSED OR COMPLETED OPERATIONS (Clearly state all pertinent details, and give pertinent dates, including estimated date of starting any proposed work. If well is directionally drilled, give subsurface locations and measured and true vertical depths for all markers and zones pertinent to this work.)\*

ABANDON MANCOS: PERFORATION 18,600'-18,746'  
SET CIBP @ 18,550'; DUMP 5 SACKS OF CEMENT ON  
PLUG AND SET SECOND CIBP 18,490'. HOLE WILL BE  
LOADED WITH 11#/GALLON  $CaCl_2$  WATER. (VERBAL APPROVAL  
DEAN ELLIOTT - 4/13/82)

OPEN HOSTA-UPPER GIBSON: PERFORATE 17,097'-17,134' AND 17,146'-17,175'  
ACIDIZE WITH 7000 GALS OF MSA ACID, TEST AND  
POSSIBLY FRACTURE TREAT. OPERATION TO BEGIN 4/15/82.

Subsurface Safety Valve: Manu. and Type \_\_\_\_\_ Set @ \_\_\_\_\_ Ft.

18. I hereby certify that the foregoing is true and correct

SIGNED W. F. N. KELLDORF TITLE DIV. PROD. ENG. DATE 4-13-82

(This space for Federal or State office use)

APPROVED BY \_\_\_\_\_ TITLE \_\_\_\_\_ DATE \_\_\_\_\_  
CONDITIONS OF APPROVAL, IF ANY:

CONFIDENTIAL

\*See Instructions on Reverse Side

APPROVED

APR 23 1982

Elliot

For DISTRICT ENGINEER

NMOCC

Santa Fe

CONFIDENTIAL

UNITED STATES  
DEPARTMENT OF THE INTERIOR  
GEOLOGICAL SURVEY

SUNDRY NOTICES AND REPORTS ON WELLS

(Do not use this form for proposals to drill or to deepen or plug back to a different reservoir. Use Form 9-331-C for such proposals.)

1. oil well ☐ gas well ☒ other ☐
2. NAME OF OPERATOR  
SHELL OIL COMPANY
3. ADDRESS OF OPERATOR  
P.D. Box 831 Houston, Tx 77001 ATTN: P.G. Gelling RM # 6459 WCK
4. LOCATION OF WELL (REPORT LOCATION CLEARLY. See space 17 below.)  
AT SURFACE: 1520' FNL + 1000' FEL SEC. 24  
AT TOP PROD. INTERVAL:  
AT TOTAL DEPTH:
16. CHECK APPROPRIATE BOX TO INDICATE NATURE OF NOTICE, REPORT, OR OTHER DATA

REQUEST FOR APPROVAL TO:

- TEST WATER SHUT-OFF ☐  
FRACTURE TREAT ☐  
SHOOT OR ACIDIZE ☒  
REPAIR WELL ☐  
PULL OR ALTER CASING ☐  
MULTIPLE COMPLETE ☐  
CHANGE ZONES ☒  
ABANDON\* ☐  
(other) ☐

SUBSEQUENT REPORT OF:

☐ PRODUCTION  
☐ PLUG BACK  
☐ REPAIR  
☐ PULL OR ALTER CASING  
☐ MULTIPLE COMPLETE  
☐ CHANGE ZONES  
☒ ABANDON  
(other) ☐

5. LEASE  
NM-12942
6. IF INDIAN, ALLOTTEE OR TRIBE NAME
7. UNIT AGREEMENT NAME  
WEST MESA UNIT
8. FARM OR LEASE NAME  
FEDERAL
9. WELL NO.  
1-24A
10. FIELD OR WILDCAT NAME  
WEST MESA FEDERAL 1-24A
11. SEC., T., R., M., OR BLK. AND SURVEY OR AREA  
SE/4 NE/4 T11N R1E
12. COUNTY OR PARISH  
BERNALILLO
13. STATE  
NEW MEXICO
14. API NO.
15. ELEVATIONS (SHOW DF, KDB, AND WD)  
5797' KB

(NOTE: Report results of multiple completion or zone change on Form 9-330.)

17. DESCRIBE PROPOSED OR COMPLETED OPERATIONS (Clearly state all pertinent details, and give pertinent dates, including estimated date of starting any proposed work. If well is directionally drilled, give subsurface locations and measured and true vertical depths for all markers and zones pertinent to this work.)\*

ABANDON MANCOS: PERFORATION 18,600'-18,746'  
SET CIBP @ 18,550'; DUMP 5 SACKS OF CEMENT ON  
PLUG AND SET SECOND CIBP 18,490'. HOLE WILL BE  
LOADED WITH 11#/GALLON  $CaCl_2$  WATER. (VERBAL APPROVAL  
DEAN ELLIOTT - 4/13/82)

OPEN HOSTA-UPPER GIBSON: PERFORATE 17,097'-17,134' AND 17,146'-17,175'  
ACIDIZE WITH 7000 GALS OF MSA ACID, TEST AND  
POSSIBLY FRACTURE TREAT. OPERATION TO BEGIN 4/15/82.

Subsurface Safety Valve: Manu. and Type \_\_\_\_\_ Set @ \_\_\_\_\_ Ft.

18. I hereby certify that the foregoing is true and correct

SIGNED W. F. N. KELLDORF TITLE DIV. PROD. ENG. DATE 4-13-82

(This space for Federal or State office use)

APPROVED BY \_\_\_\_\_ TITLE \_\_\_\_\_ DATE \_\_\_\_\_  
CONDITIONS OF APPROVAL, IF ANY:

CONFIDENTIAL

\*See Instructions on Reverse Side

APPROVED

APR 23 1982

Elliott  
FOR DISTRICT ENGINEER

NMOCC Santa Fe