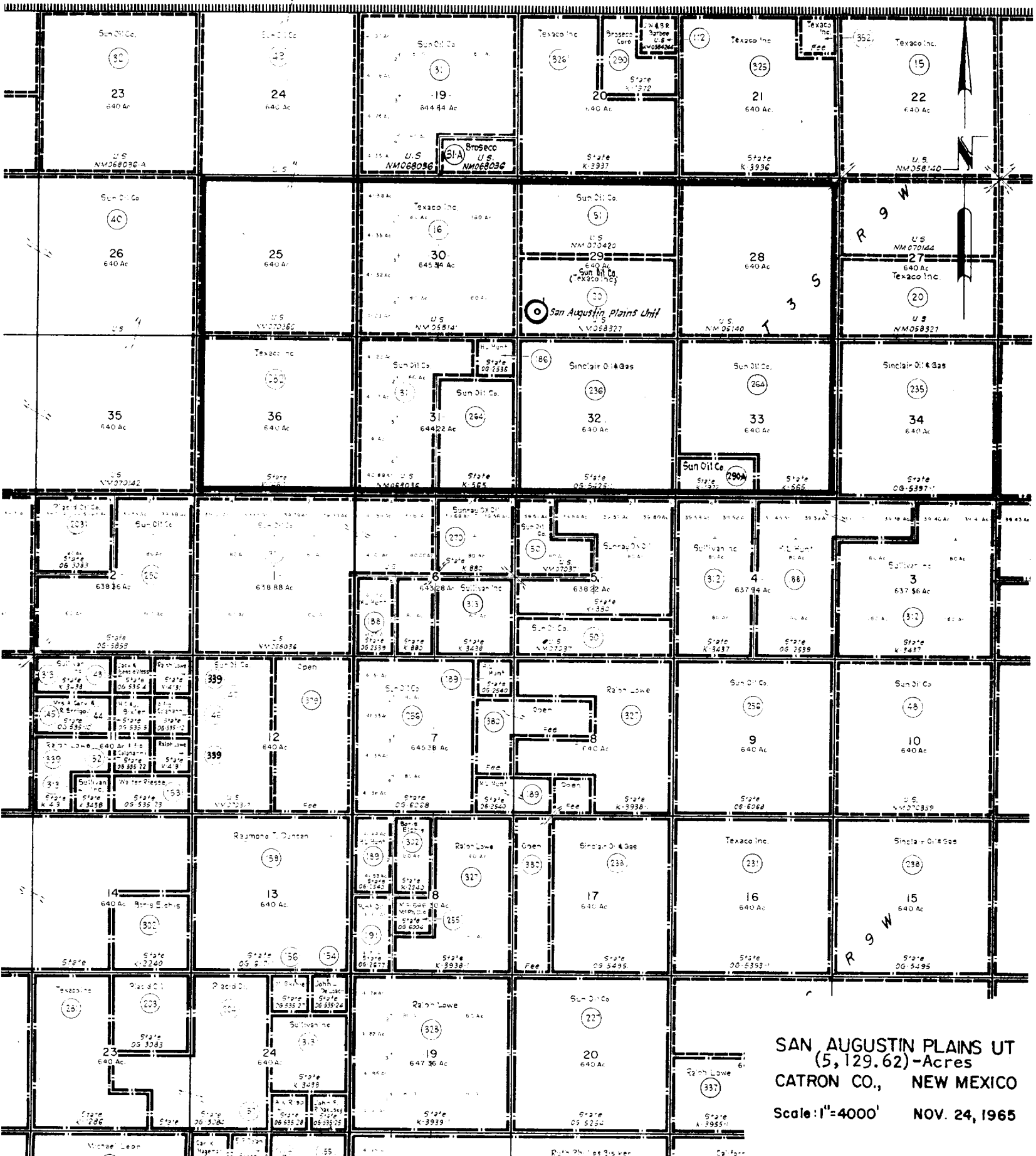


RECEIVED

FEB 10 1966

O. C. C.
ARTESIA, OFFICE



RECEIVED

Broseco
19

U.S.A.
NM 068036

Texaco, Inc.
20

State
640 Ac.
589° 40' E - 5196.18'
(Unit Line)

FEB 10 1966
N. C. C.
ADVISORY OFFICE

Texaco, Inc.
21

State
640 Ac.

Texaco, Inc.

30

N 0° 46' W - 5324.88'

U.S.A.
320 Ac.
NM 070420

T 3 S - R 9 W

29

(Lease Line)

Sun Oil Co.

320 Ac.

San Augustin Plains Unit (5,129.62)
< U.S.A. > Acres
NM 058327

U.S.A.
645.34 Ac.
NM 058141

660'

860'

S 1° 37' E - 5280.0'

28

U.S.A.

H.L. Hunt

31

State

589° 51' W - 5273.40'

Sinclair O. & G.

32

State
640 Ac.

Sun Oil Co.

33

State

I, Robert L. Howell, Registered Public Surveyor,
certify that this plat is accurately drawn to scale
and correctly reflects all pertinent, and required
data to the best of my knowledge and belief.

Robert L. Howell

SEC. 29-T3S-R9W
CATRON COUNTY, NEW MEXICO
SCALE: 1" = 1000'
N.M.O.C.C. NO. 9
11-19-65

NEW MEXICO OIL CONSERVATION COMMISSION
WELL LOCATION AND ACREAGE DEDICATION PLAT

Form C-102
Supersedes C-128
Effective 1-1-65

All distances must be from the outer boundaries of the Section.

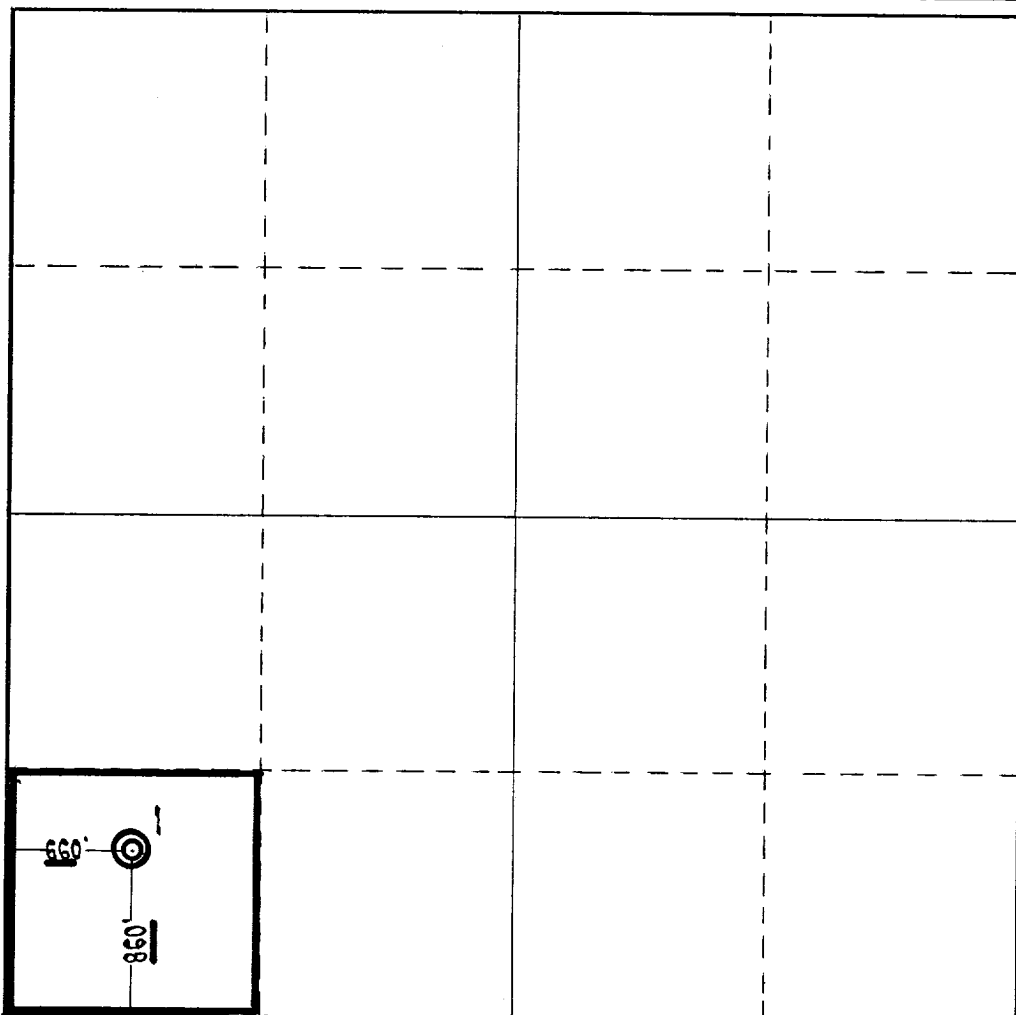
Operator Sun Oil Company			Lease San Augustine Plains Unit		Well No. 1
Unit Letter 47	Section 29	Township T38	Range R3W	County FEB 10 1966	
Actual Footage Location of Well: 860 feet from the South line and 660 feet from the West line					
Ground Level Elev: 7063'	Producing Formation Cretaceous to Mississippian (Wildcat)		Pool	Dedicated Acreage: 40 Acres	

1. Outline the acreage dedicated to the subject well by colored pencil or hachure marks on the plat below.
2. If more than one lease is dedicated to the well, outline each and identify the ownership thereof (both as to working interest and royalty).
3. If more than one lease of different ownership is dedicated to the well, have the interests of all owners been consolidated by communitization, unitization, force-pooling, etc?

☒ Yes ☐ No If answer is "yes," type of consolidation **Unitization**

If answer is "no," list the owners and tract descriptions which have actually been consolidated: (Use reverse side of this form if necessary.)

No allowable will be assigned to the well until all interests have been consolidated (by communitization, unitization, forced-pooling, or otherwise) or until a non-standard unit, eliminating such interests, has been approved by the Commission.



CERTIFICATION

I hereby certify that the information contained herein is true and complete to the best of my knowledge and belief.

Name **(A. S. Rhoads)**
Position **Division Superintendent**
Company **Sun Oil Company**
Date **2-1-66**

I hereby certify that the well location shown on this plat was plotted from field notes of actual surveys made by me or under my supervision, and that the same is true and correct to the best of my knowledge and belief.

Date Surveyed **Nov. 18, 1965**
Registered Professional Engineer and/or Land Surveyor

Robert P. Howell
Certificate No.

3050