

UNITED STATES  
DEPARTMENT OF THE INTERIOR  
GEOLOGICAL SURVEY

(Other instructions on reverse side)

AM 3 2 3

003-10,001

APPLICATION FOR PERMIT TO DRILL, DEEPEN, OR PLUG BACK

1a. TYPE OF WORK

DRILL ☒

DEEPEN ☐

PLUG BACK ☒

b. TYPE OF WELL

OIL WELL ☐

GAS WELL ☐

OTHER

Wildcat

SINGLE ZONE ☐

MULTIPLE ZONE ☒

2. NAME OF OPERATOR

Tenneco Oil Company

3. ADDRESS OF OPERATOR

P. O. Box 1714, Durango, Colorado

4. LOCATION OF WELL (Report location clearly and in accordance with any State requirements.)\*

At surface

At proposed prod. zone

1650 FNL, 1650 FEL, Unit G

14. DISTANCE IN MILES AND DIRECTION FROM NEAREST TOWN OR POST OFFICE\*

15. DISTANCE FROM PROPOSED\*

LOCATION TO NEAREST PROPERTY OR LEASE LINE, FT. (Also to nearest drlg. unit line, if any)

16. NO. OF ACRES IN LEASE

160

17. NO. OF ACRES ASSIGNED TO THIS WELL

18. DISTANCE FROM PROPOSED LOCATION\*

TO NEAREST WELL, DRILLING, COMPLETED, OR APPLIED FOR, ON THIS LEASE, FT.

19. PROPOSED DEPTH

6300'

20. ROTARY OR CABLE TOOLS

Rotary

21. ELEVATIONS (Show whether DF, RT, GR, etc.)

8039 Un.Gr.

22. APPROX. DATE WORK WILL START\*

June 1, 1967

23. PROPOSED CASING AND CEMENTING PROGRAM

SIZE OF HOLE	SIZE OF CASING	WEIGHT PER FOOT	SETTING DEPTH	QUANTITY OF CEMENT
15"	10-3/4"	40.5#	450'	300 sx.
8-3/4"	7"	23#	6300'	350 sx.

We plan to drill to approximately 6300'. Run casing as shown above, run logs, and if productive will complete as an oil well, run tbq and conduct potential tests.

CONFIDENTIAL - PLEASE DO NOT RELEASE UNTIL NOTIFIED.

RECEIVED  
MAY 29 1967  
U. S. GEOLOGICAL SURVEY  
ARTESIA, NEW MEXICO

IN ABOVE SPACE DESCRIBE PROPOSED PROGRAM: If proposal is to deepen or plug back, give data on present productive zone and proposed new productive zone. If proposal is to drill or deepen directionally, give pertinent data on subsurface locations and measured and true vertical depths. Give blowout preventer program, if any.

24.

SIGNED

M. K. Wagner

TITLE

DATE May 21, 1967

(This space for Federal or State office use)

PERMIT NO.

APPROVAL DATE

APPROVED BY

TITLE

DATE

CONDITIONS OF

APPROVED  
MAY 29 1967  
R. L. SECKMAN  
ACTING DISTRICT ENGINEER

\*See Instructions On Reverse Side

# NEW MEXICO OIL CONSERVATION COMMISSION

## WELL LOCATION AND ACERAGE DEDICATION PLAT

All distances must be from the outer boundaries of the Section

Operator <b>TENNECO OIL COMPANY</b>			Lease <b>Federal</b>		Well No. <b>1</b>
Unit Letter <b>G</b>	Section <b>35</b>	Township <b>1 South</b>	Range <b>13 West</b>	County <b>Catron</b>	
Actual Footage Location of Well: <b>1650</b> feet from the <b>North</b> line and <b>1650</b> feet from the <b>East</b> line					
Ground Level Elev. <b>8039' ungraded</b>	Producing Formation <b>Wildcat</b>		Pool <b>Wildcat</b>	Dedicated Acreage: <b>80 Acres</b>	

1. Outline the acreage dedicated to the subject well by colored pencil or hachure marks on the plat below.
2. If more than one lease is dedicated to the well, outline each and identify the ownership thereof (both as to working interest and royalty),
3. If more than one lease of different ownership is dedicated to the well, have the interests of all owners been consolidated by communitization, unitization, force-pooling, etc?

( ) Yes ( ) No If answer is "yes," type of consolidation .....

If answer is "no," list the owners and tract descriptions which have actually consolidated. (Use reverse side of this form if necessary.) .....

No allowable will be assigned to the well until all interests have been consolidated (by communitization, unitization, forced-pooling, or otherwise) or until a non standard unit, eliminating such interests, has been approved by the Commission.

### CERTIFICATION

I hereby certify that the information contained herein is true and complete to the best of my knowledge and belief.

*M. K. Wagner*  
Name **M. K. Wagner**

Position  
**Tenneco Oil Company**

Company  
**May 22, 1967**

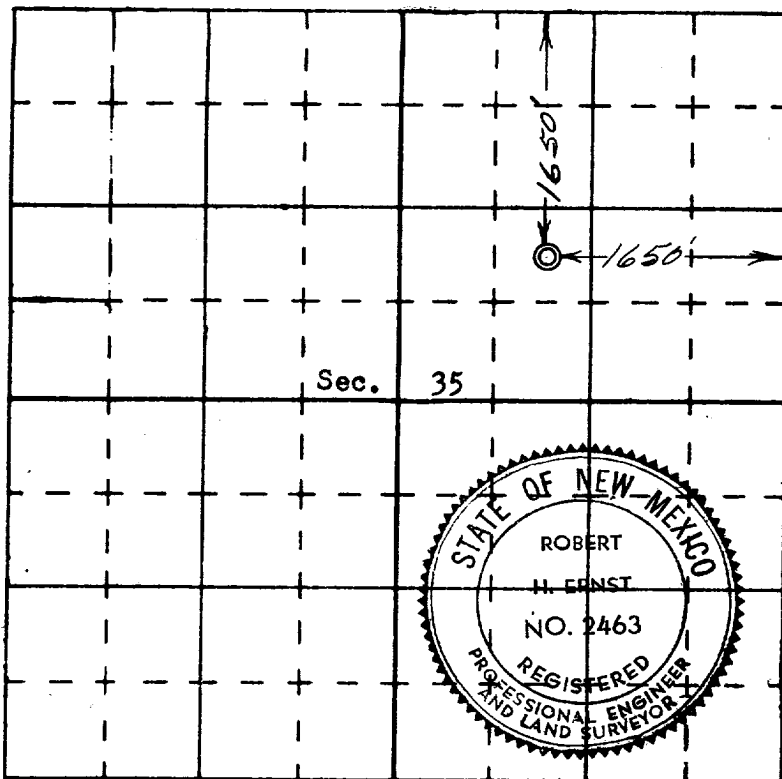
Date

I hereby certify that the well location shown on this plat was plotted from field notes of actual surveys made by me or under my supervision, and that the same is true and correct to the best of my knowledge and belief.

**10 May 1967**  
Date Surveyed

*Robert H. Ernst*  
Registered Professional Engineer  
and/or Land Surveyor  
**Robert H. Ernst**  
**N. Mex. PE & L.S. 2463**

Certificate No.



N

**Feb 23, 1886 Plat**

**Ernst Engineering Co.**  
**Durango, Colorado**