

UNITED STATES  
DEPARTMENT OF THE INTERIOR

GEOLOGICAL SURVEY

APPLICATION FOR PERMIT TO DRILL, DEEPEN, OR PLUG BACK

API # 30-003-20009

1a. TYPE OF WORK

DRILL ☒

DEEPEN ☐

PLUG BACK ☐

b. TYPE OF WELL

OIL WELL ☒

GAS WELL ☐

OTHER

SINGLE ZONE ☐

MULTIPLE ZONE ☐

2. NAME OF OPERATOR

Reeves Brothers Petroleum 'A' Ltd.

3. ADDRESS OF OPERATOR

2701 - 2nd, N.W.

Albuquerque, New Mexico 87107

4. LOCATION OF WELL (Report location clearly and in accordance with any State requirements.\*)

At surface

330' FSL, 565' FEL Unit P

At proposed prod. zone

Same

14. DISTANCE IN MILES AND DIRECTION FROM NEAREST TOWN OR POST OFFICE\*

24 miles NW of Datil, New Mexico

15. DISTANCE FROM PROPOSED\*

LOCATION TO NEAREST PROPERTY OR LEASE LINE, FT. (Also to nearest drig. unit line, if any)

330'

16. NO. OF ACRES IN LEASE

800

17. NO. OF ACRES ASSIGNED TO THIS WELL

40

18. DISTANCE FROM PROPOSED LOCATION\* TO NEAREST WELL, DRILLING, COMPLETED, OR APPLIED FOR, ON THIS LEASE, FT.

8580'

19. PROPOSED DEPTH

1200' Baca

20. ROTARY OR CABLE TOOLS

Rotary

21. ELEVATIONS (Show whether DF, RT, GR, etc.)

7470' Gr.

22. APPROX. DATE WORK WILL START\*

9-15-1978

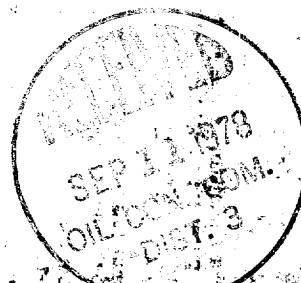
23.

PROPOSED CASING AND CEMENTING PROGRAM

SIZE OF HOLE	SIZE OF CASING	WEIGHT PER FOOT	SETTING DEPTH	QUANTITY OF CEMENT
9	7	20	40	25 sacks
6 1/4	4 1/2	9.5	1200	100 sacks

PROPOSED DRILLING PROGRAM (with Attachments)

1. Set above surface casing.
2. Use of standard Mayhew 1000 blowout equipment.
3. Drill 6 1/4 hole to 1200'.
4. Run electric logs.
5. Run & cement 4 1/2 production casing, circulate cement.
6. Perforate and put on pump.
7. If Non-commercial, plug & abandon and restore the location in accordance USGS, BLM and surface owner regulations and instructions.



IN ABOVE SPACE DESCRIBE PROPOSED PROGRAM: If proposal is to deepen or plug back, give data on present productive zone and proposed new production zone. If proposal is to drill or deepen directionally, give pertinent data on subsurface locations and measured and true vertical depths. Give blowout preventer program, if any.

24.

SIGNED

*Charles C. Kennedy*

TITLE

Agent

DATE

8-30-1978

(This space for Federal or State office use)

PERMIT NO.

APPROVAL DATE

RECEIVED

APPROVED BY

TITLE

DATE

SEP 10 1978

CONDITIONS OF APPROVAL, IF ANY:

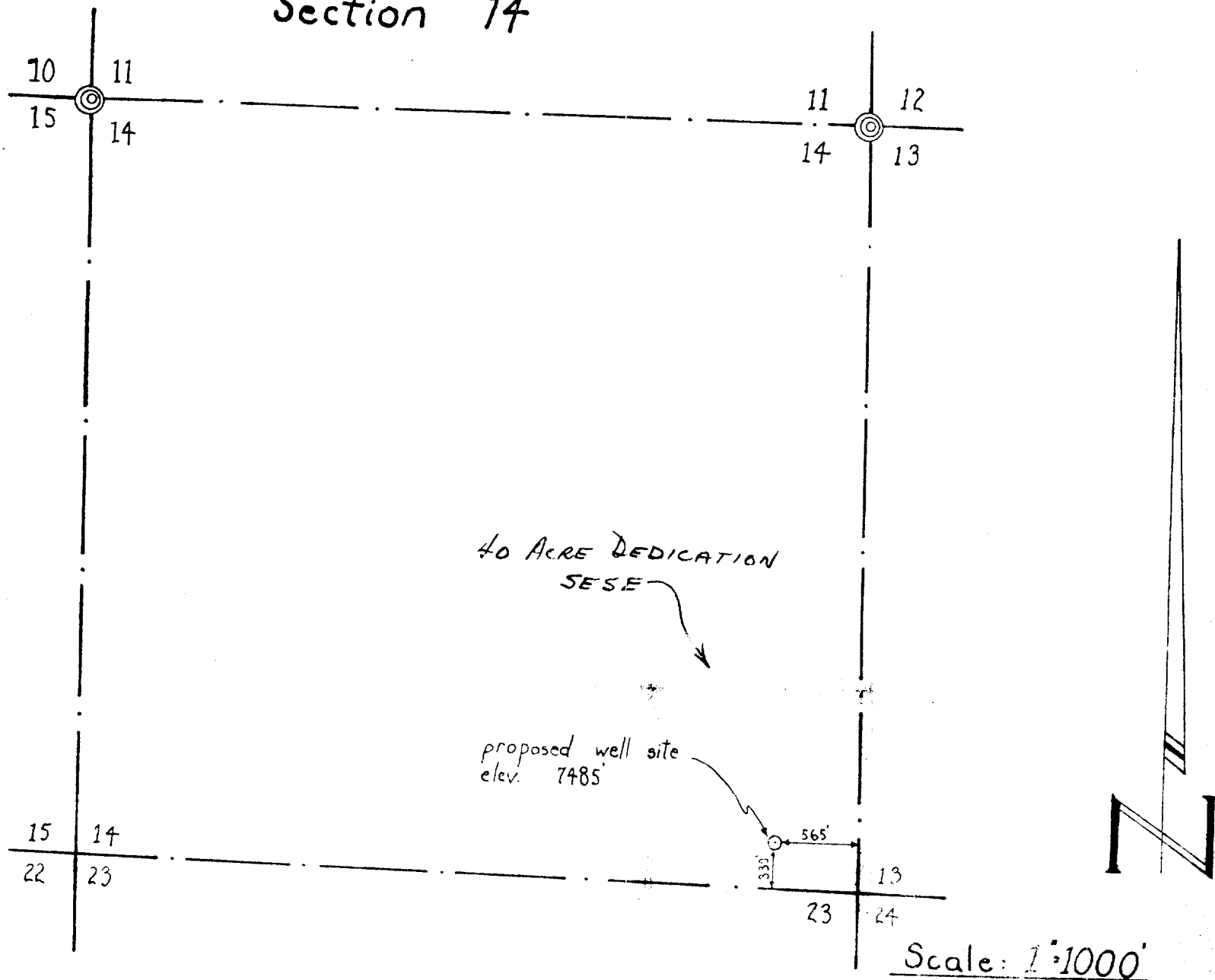
U. S. GEOLOGICAL SURVEY

\*See Instructions On Reverse Side

NMDC

Tshp. 2N, Rge. 11W.

Section 14



PLAT OF SURVEY  
of proposed oil well drilling site  
to be known as

No 1 REEVES

in the SE 1/4 of Section 14, Tshp 2N, Rge 11W.  
Catron County, New Mexico

AUGUST 29, 1978

Reeves Brothers Petroleum 'A' Ltd.

CERTIFICATE

This is to certify that I am a duly licensed professional  
engineer and land surveyor, that I have been  
licensed from the State of New Mexico, and that I have  
made the survey shown on this plat, and that  
the same is correct to the best of my knowledge  
and belief.

Signed: Raymond J. Smith  
Raymond J. Smith  
Registered Professional  
Engineer and Land Surveyor  
License No. 1055

REEVES BROTHERS PETROLEUM 'A' LTD.

FORMATION INFORMATION AND DRILLING PRACTICES

WELL:

REEVES #1

LOCATION:

330' FSL, 565' FEL  
Sec. 14, T2N, R11W  
Catron County, New Mexico

LEASE NUMBER:

NM-28932

1. Geologic name of surface formation.  
Baca
2. Estimated tops of important geologic markers.  
Baca surface to T.D.
3. Estimated depths at which anticipated water, oil, gas or other mineral bearing formations are expected.  
Wildcat - Unknown.
4. Proposed casing program.  
Surface: 7", 20#, K-55, used casing to be set at 40'.  
Cement will be 25 sacks Class 'B' circulated.  
  
Production:  
4½", 9.5#, K-55, new casing to be set at 1200'.  
Cement will be 150 sacks Class 'B' circulated.
5. Specifications for pressure control equipment.  
The attached schematic shows the type of blow out preventer to be used while drilling. The unit will be tested to maximum pressure with the rig pump prior to drilling from under surface. Both blind and pipe rams will be tested. Operation of the hydraulic system will be checked daily.
6. Drilling fluids.  
O-1200', Native mud, Vis 36, Wt 9.0.
7. Auxiliary equipment.  
A. Bit float.  
B. Full opening stabbing valve for use when Kelly is not connected.
8. Logging - Coring - Testing.  
  
Logging: Induction Electric Log.  
Coring: None  
Drill Stem Testing: None
9. Abnormal temperatures, pressures, or hazardous conditions.  
  
NONE EXPECTED.
10. Starting date.  
9-15-1978.



SHAFFER TOOL WORKS

ATTACHMENT TO POINT 5.  
10" 900 SERIES PI

## SHAFFER HYDRAULIC BLOWOUT PREVENTERS

(Patented)

TYPE LWS PREVENTERS—8", 3000 lb. & 5000 lb.—10", 5000 lb.  
12", 3000 lb.—13 1/8", 5000 lb.—16", 3000 lb.

### PARTS AND DIMENSIONAL ILLUSTRATIONS

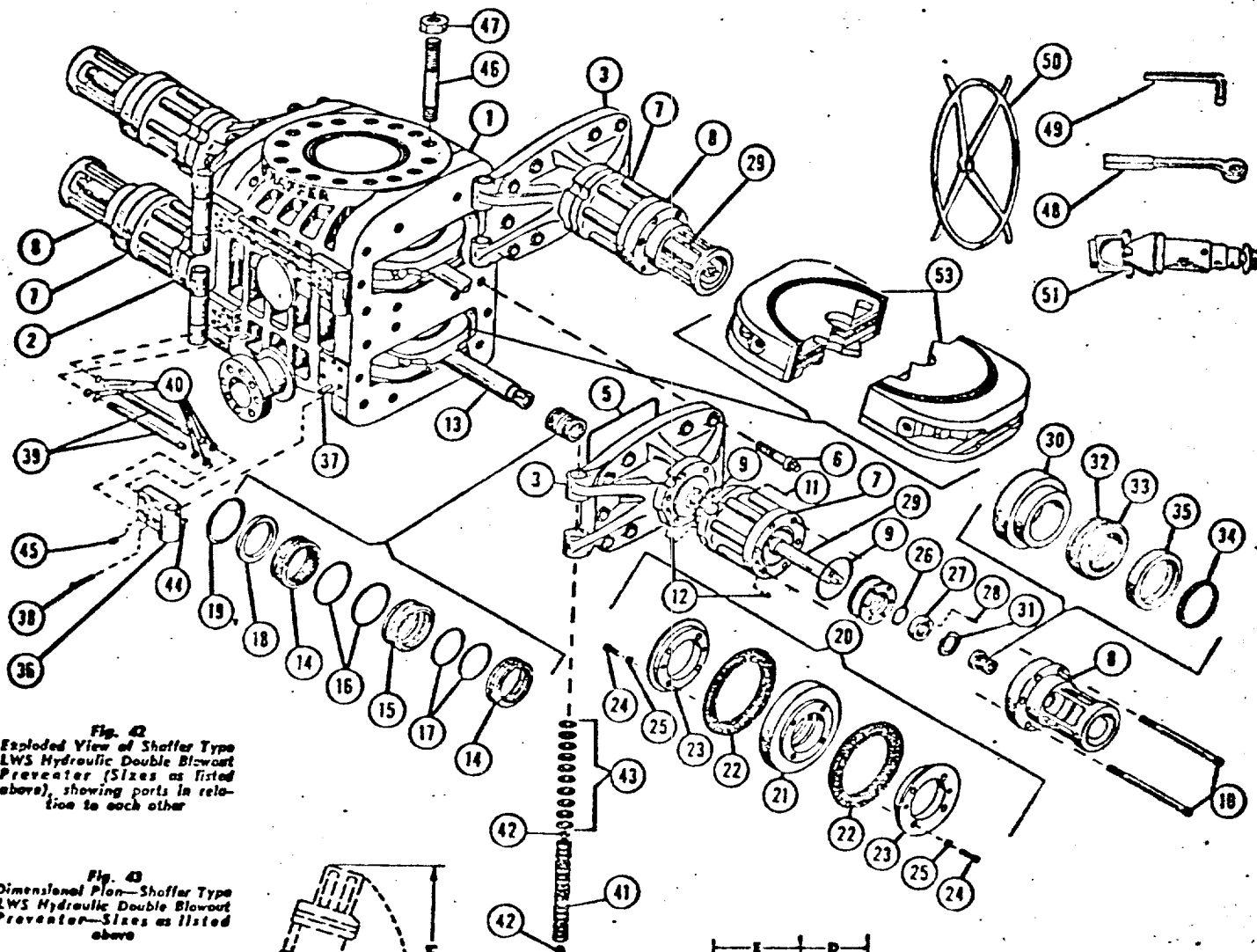


Fig. 42  
Exploded View of Shaffer Type  
LWS Hydraulic Double Blowout  
Preventer (Sizes as listed  
above), showing parts in rela-  
tion to each other

Fig. 43  
Dimensional Plan—Shaffer Type  
LWS Hydraulic Double Blowout  
Preventer—Sizes as listed  
above

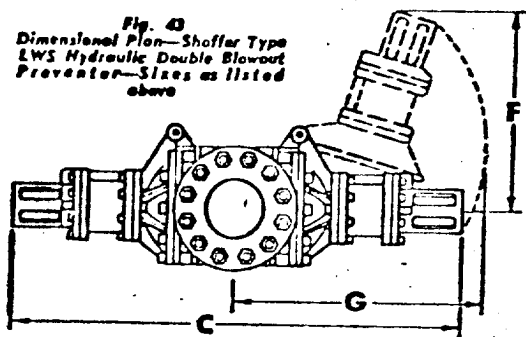
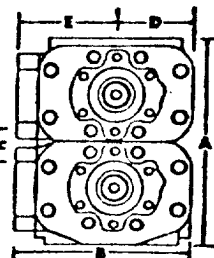


Fig. 44  
Dimensional End Elevation—  
Shaffer Type LWS Hydraulic  
Double Blowout Preventer—  
Sizes as listed above



#### STANDARD ACCESSORIES

- (50) 4 Hand Wheels
- (48) 1 Door Wrench
- (49) 1 Cylinder & Cylinder Head Wrench
- (51) 4 Universal Joints

#### DIMENSIONAL AND ENGINEERING DATA ON ABOVE SIZES OF TYPE LWS PREVENTERS

Refer to Figs. 43 and 44

Size	Max. Working Pressure Working psi	Test Pressure psi	Vertical Bore	Max. Flange Size	Approx. Weight Lbs.	A				B	C	D	E	F	G	Closing Ratio	Opening Ratio	U.S. Gate Flange To Close Rams	U.S. Gate Flange To Open Rams
						Height													
						Studded Flange													
						Single		Double											
						Studded Flange	Bolted Flange	Studded Flange	Bolted Flange	Width	Length	Center To Front	Center To Rear	Door Open To Change Rams	Door Open To Change Rams				
8"	3,000	6,000	8"	7"	3,900	----	----	20 1/2"	41 1/2"	25 1/2"	70 1/2"	11 1/2"	14 1/2"	22"	46"	9.8 to 1	1.29 to 1	2.78	2.3
10"	5,000	10,000	10"	9"	5,000	----	----	20 1/2"	41 1/2"	25 1/2"	70 1/2"	11 1/2"	14 1/2"	22"	46"	9.8 to 1	1.29 to 1	2.78	2.3
12"	3,000	6,000	12 1/4"	10 1/2"	6,300	----	----	24 1/2"	47 1/2"	29 1/2"	85 1/2"	12 1/2"	18 1/2"	27"	54"	8.56 to 1	1.5 to 1	3.55	2.9
13 1/8"	5,000	10,000	12 1/4"	10 1/2"	9,200	----	----	24 1/2"	47 1/2"	29 1/2"	85 1/2"	12 1/2"	18 1/2"	27"	54"	8.56 to 1	1.5 to 1	3.55	2.9
16"	3,000	6,000	16 1/4"	12 1/2"	8,500	----	----	36"	61"	36"	106 1/2"	16 1/2"	22"	32"	60"	8.56 to 1	1.5 to 1	2.8	2.3

REEVES BROTHERS PETROLEUM 'A' LTD.

SURFACE DEVELOPMENT PLAN

WELL:

REEVES #1

LOCATION:

330' FSL, 565' FEL  
Sec. 14, T2N, R11W  
Catron County, New Mexico

LEASE NUMBER:

NM-28932

1. Existing roads. (Shown in Green)

The attached topographic map shows all existing roads within 3 miles of the proposed location. All roads are in fair condition and will require a minimal amount of work to upgrade them to handle normal drilling activity traffic.

2. Planned access road.

None required.

3. Location of existing wells.

No other wells in area.

4. Location of existing production facilities.

None. All production facilities are to be contained within the proposed location.

5. Location and type of water supply.

Water for drilling will be trucked from ranch water hole, approximately 3 miles to the south. This water is privately owned.

6. Source of construction material.

Any construction material required for road or location will be excess material accumulated during building of such sites.

7. Methods of handling waste material.

(Refer to attached well site layout)

All material that can be safely burned will be so disposed when weather permits. All nonburnable waste (drilling fluids, cuttings, chemicals, etc.) will be held in the reserve pit until dry, and then buried. Any oil that accumulates on the pit will be removed prior to leaving the pit to dry. Pits will be fenced during drying out, then completely back-filled with dirt prior to preparing the location for production or abandonment.

All solid waste that can not be buried will be taken from the location and properly destroyed. Portable chemical toilet will be supplied for human waste.

8. Ancillary facilities.

None planned.

9. Well site layout.

The attached layout shows the drilling rig with all supporting facilities. Cut and fill, required for pad construction, is also shown.

10. Plans for restoration of surface.

Restoration of the well site and access road will begin within 90 days of well completion, weather permitting.

Should the well be abandon, the drill site will be reshaped to its approximate former contour. The access road will be plowed and leveled. Both road and location will have top soil replaced and will be reseeded when germination can occur.

Should the well be commercial, that portion of location not needed for operation will be repaired as above. The portion of the location needed for daily production operations, and the access road, will be kept in good repair and clean.

In either case, cleanup of the site will include burning any safely burnable material, filling of all pits, and proper disposal of any nonburnable material that can be safely burned. Any oil that has accumulated on the pits will be trucked away.

11. Other information.

General topography of the area may be seen on the attached map.

This location is on fee owned surface. The area is generally flat. The area is sandy and is covered with sage brush and native grasses. There is evidence of cow and small animal life in the area.

Surface at this location belongs to Carole Roberson, Austin, Texas.

There are no occupied dwelling in the area.

There were no archaeological or cultural sites visible on the location. The archaeologist's report is forthcoming.

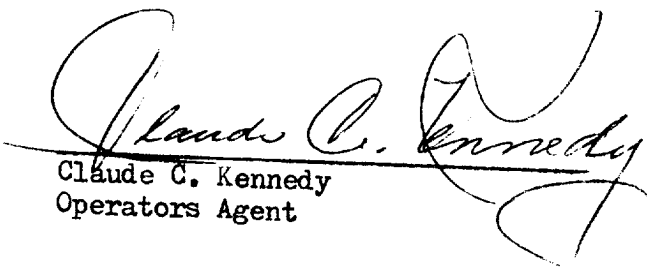


12.

Claude C. Kennedy  
Operators Agent  
4949 San Pedro, N.E.  
Suite 47  
Albuquerque, New Mexico 87109  
Phone: (505) 883-9624

13. I hereby certify that I or persons under my direct supervision, have inspected the proposed drill site and access route; that I am familiar with the conditions which presently exist; that the statements made in the plan are to the best of my knowledge, true and correct; and, that the work associated with the operations proposed herein will be performed by operator, and its contractors and subcontractors in conformity with this plan and the terms and conditions under which it is approved.

9-1-1978  
Date

  
Claude C. Kennedy  
Operators Agent

4919 SAN PEDRO, N.E.  
SUITE 47  
ALBUQUERQUE, NEW MEXICO 87109

PHONE (505) 863-9624

CLAUDE C. KENNEDY  
INDEPENDENT OIL AND GAS OPERATOR

August 31, 1978

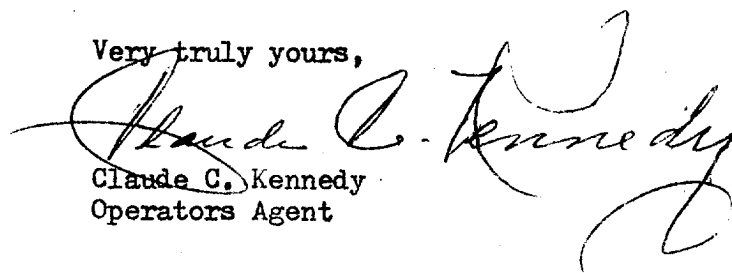
U. S. G. S.  
P.O. Box 959  
Farmington, New Mexico 87401

Gentlemen:

The drilling of the well as covered by the attached "Surface Development Plan" is being drilled on fee owned surface.

By "Verbal Agreement" well site clean up will be in accordance with U. S. G. S. regulations. Any damages to the land will be settled between the operator and land owner at such time as the drilling program is terminated.

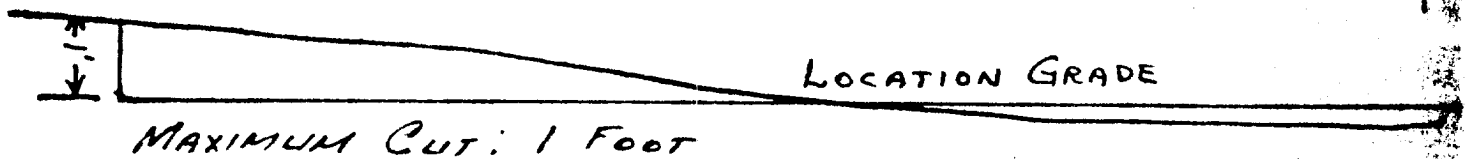
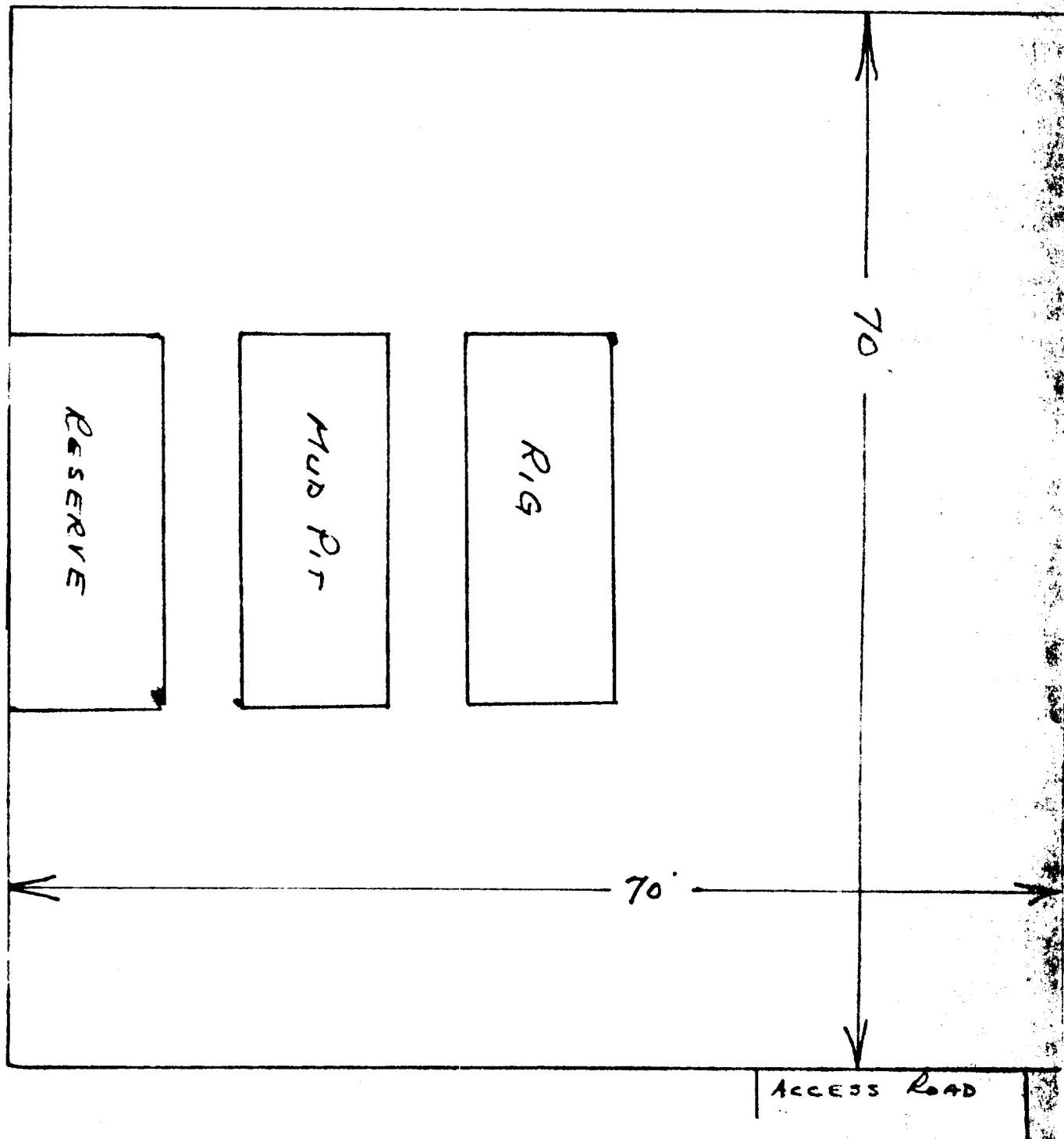
Very truly yours,



Claude C. Kennedy  
Operators Agent

N

# WELL SITE LAYOUT



SCALE 1 IN = 10 FEET