

UNITED STATES
DEPARTMENT OF THE INTERIOR

GEOLOGICAL SURVEY

API# 30-061-20011

APPLICATION FOR PERMIT TO DRILL, DEEPEN, OR PLUG BACK

1a. TYPE OF WORK

DRILL ☒DEEPEN ☐PLUG BACK ☐

b. TYPE OF WELL

OIL
WELL ☒GAS
WELL ☐

OTHER

SINGLE
ZONE ☒MULTIPLE
ZONE ☐

2. NAME OF OPERATOR

Worldwide Exploration Consultants Inc.

3. ADDRESS OF OPERATOR

K & A Inc. Minerals Management,
501 Airport Drive, Farmington, New Mexico 87401

4. LOCATION OF WELL (Report location clearly and in accordance with any State requirements.)

At surface

660' FNL, 1650" FEL Section 30, T11N, R7W

At proposed prod. zone

14. DISTANCE IN MILES AND DIRECTION FROM NEAREST TOWN OR POST OFFICE*

Northeast of San Fidel, New Mexico

15. DISTANCE FROM PROPOSED*

LOCATION TO NEAREST

PROPERTY OR LEASE LINE, FT.

(Also to nearest drlg. unit line, if any)

660'

18. DISTANCE FROM PROPOSED LOCATION*

TO NEAREST WELL, DRILLING, COMPLETED,
OR APPLIED FOR, ON THIS LEASE, FT.

None

16. NO. OF ACRES IN LEASE

1184.89

19. PROPOSED DEPTH

2500'

17. NO. OF ACRES ASSIGNED
TO THIS WELL

40

20. ROTARY OR CABLE TOOLS

Rotary

21. ELEVATIONS (Show whether DF, RT, GR, etc.)

7808 GR

22. APPROX. DATE WORK WILL START*

May 15, 1978

23.

PROPOSED CASING AND CEMENTING PROGRAM

SIZE OF HOLE	SIZE OF CASING	WEIGHT PER FOOT	SETTING DEPTH	QUANTITY OF CEMENT
8 3/4	7"	20 (new)	60	To surface
6 1/4	4 1/2"	10.5 (new)	2500	To surface

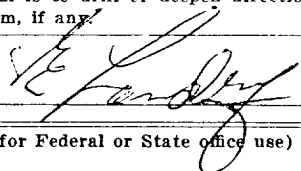
Operator proposes to test the Dakota formation, at an anticipated depth of 2275'. Surface is Mt. Taylor with anticipated tops of Gallup, 1365'; Mancos, 1555'; Tracer Mancos, 1940'; and Morrison, 2320'. A 2000 lb. W.P. blowout preventer will be set on the 7" casing and tested to 500 psi before drilling the plug. Completion will be determined from open hole logs. No abnormal pressures or temperatures are anticipated.

Drilling will require a maximum of four weeks.

IN ABOVE SPACE DESCRIBE PROPOSED PROGRAM: If proposal is to deepen or plug back, give data on present productive zone and proposed new productive zone. If proposal is to drill or deepen directionally, give pertinent data on subsurface locations and measured and true vertical depths. Give blowout preventer program, if any.

24.

SIGNED



TITLE

Area Manager

K & A Inc. Minerals Mgmt

DATE

April 20, 1978

(This space for Federal or State office use)

PERMIT NO.

APPROVAL DATE

APPROVED BY

TITLE

CONDITIONS OF APPROVAL, IF ANY:

RECEIVED

APR 26 1978

U. S. GEOLOGICAL SURVEY
DURANGO, COLO.

*See Instructions On Reverse Side

NEW MEXICO OIL CONSERVATION COMMISSION
WELL LOCATION AND ACREAGE DEDICATION PLAT

Form C-102
Supersedes C-128
Effective 1-1-65

All distances must be from the outer boundaries of the Section.

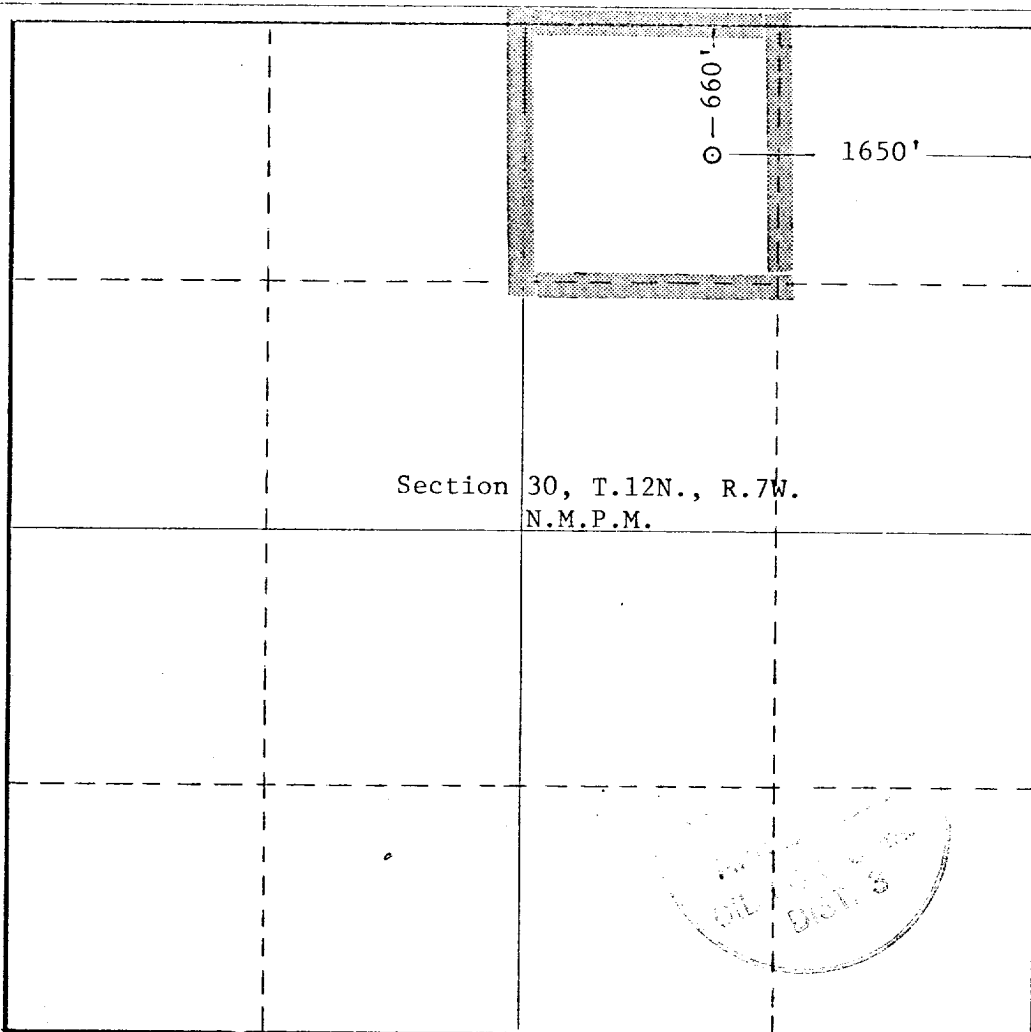
Operator Worldwide Exploration Consultants		Lease Federal 30		Well No. Fed.30, Well No. 1
Unit Letter B	Section 30	Township 12 North	Range 7 West	County Valencia County
Actual Footage Location of Well: 660 feet from the north line and 1650 feet from the east line				
Ground Level Elev. 7808.4	Producing Formation Dakota	Pool Wildcat	Dedicated Acreage: 40 Acres	

1. Outline the acreage dedicated to the subject well by colored pencil or hachure marks on the plat below.
2. If more than one lease is dedicated to the well, outline each and identify the ownership thereof (both as to working interest and royalty).
3. If more than one lease of different ownership is dedicated to the well, have the interests of all owners been consolidated by communitization, unitization, force-pooling, etc?

☐ Yes ☐ No If answer is "yes," type of consolidation _____

If answer is "no," list the owners and tract descriptions which have actually been consolidated. (Use reverse side of this form if necessary.) _____

No allowable will be assigned to the well until all interests have been consolidated (by communitization, unitization, forced-pooling, or otherwise) or until a non-standard unit, eliminating such interests, has been approved by the Commission.



CERTIFICATION

I hereby certify that the information contained herein is true and complete to the best of my knowledge and belief.

Name
Area Manager
K&A, Inc.
Minerals Management

Company
April 20, 1978

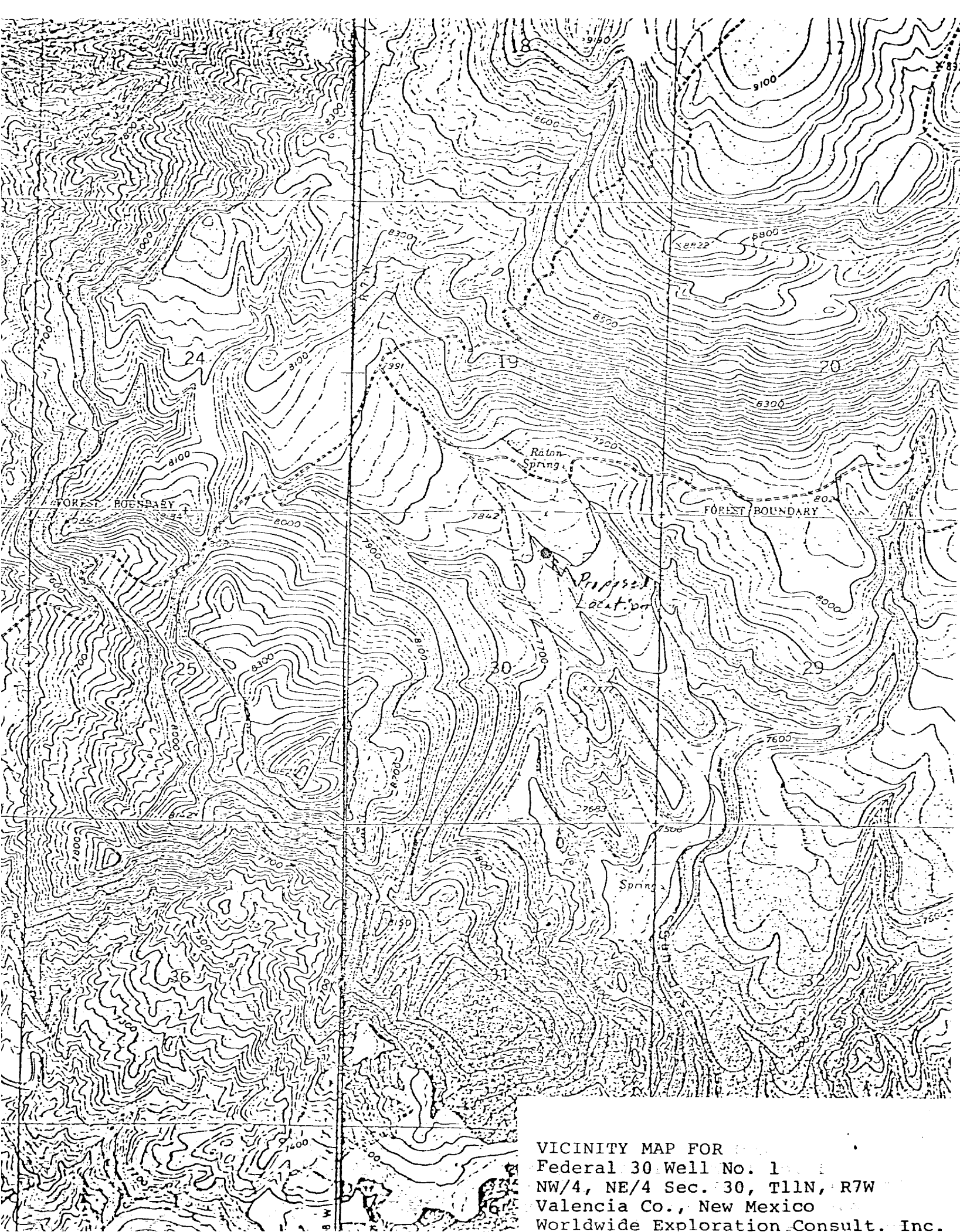
Date

I hereby certify that the well location shown on this plat was plotted from field notes of actual surveys made by me or under my supervision, and that the same is true and correct to the best of my knowledge and belief.

Date Surveyed
4/18/1978

Registered Professional Engineer
and/or Land Surveyor

Certificate No.
6256



VICINITY MAP FOR
Federal 30 Well No. 1
NW/4, NE/4 Sec. 30, T11N, R7W
Valencia Co., New Mexico
Worldwide Exploration Consult. Inc.