

STATE OF NEW MEXICO
ENERGY AND MINERALS DEPARTMENT

OIL CONSERVATION DIVISION

P. O. BOX 2088
SANTA FE, NEW MEXICO 87501

Form C-102
Revised 10-1-78

All distances must be from the outer boundaries of the Section.

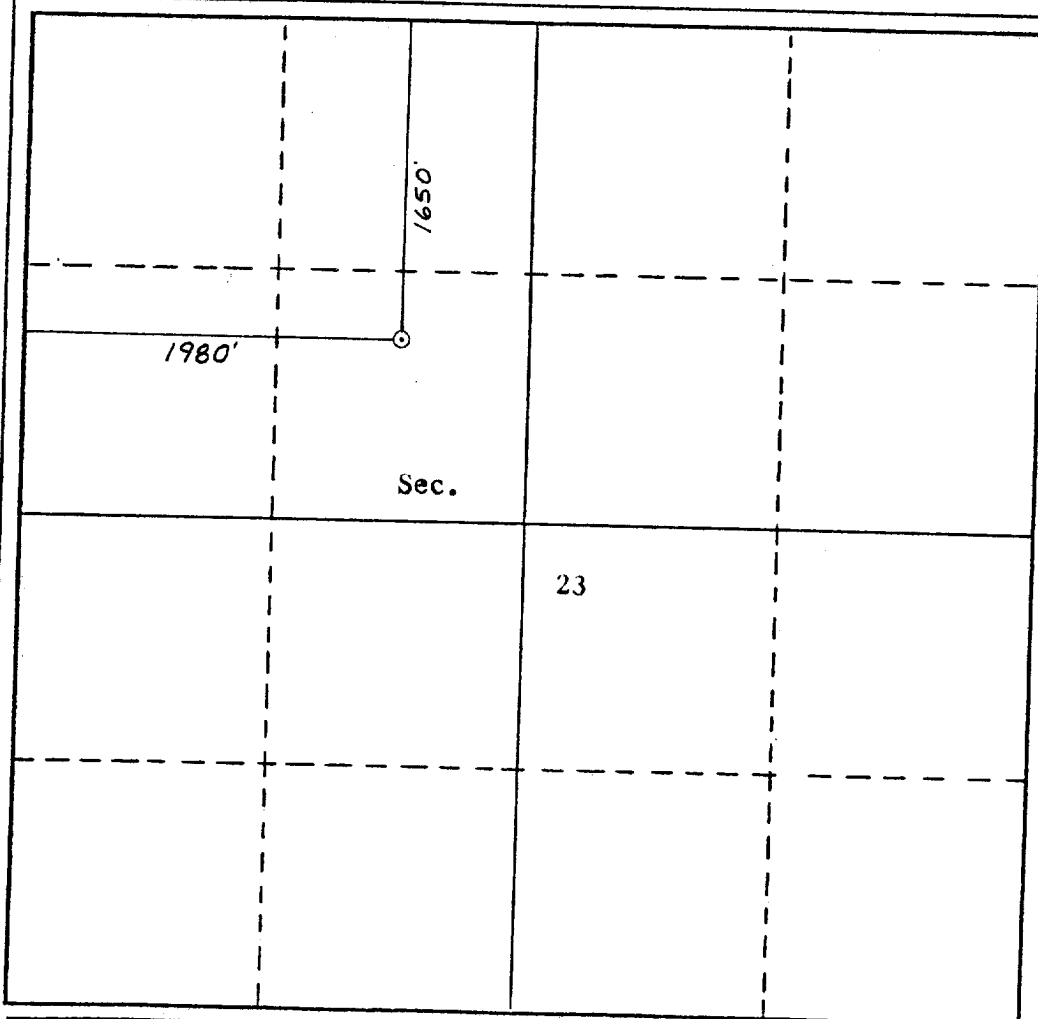
Operator Austra-Tex Oil Company			Lease Exxon Mineral Fee		Well No. 1
Unit Letter F	Section 23	Township 12N	Range 4W	County Cibola	
Actual Footage Location of Well: 1650 feet from the North line and 1980 feet from the West line					
Ground Level Elev. 6645	Producing Formation Pennsylvanian		Pool	Dedicated Acreage: 640 Acres	

1. Outline the acreage dedicated to the subject well by colored pencil or hachure marks on the plat below.
2. If more than one lease is dedicated to the well, outline each and identify the ownership thereof (both as to working interest and royalty).
3. If more than one lease of different ownership is dedicated to the well, have the interests of all owners been consolidated by communitization, unitization, force-pooling, etc?

☐ Yes ☐ No If answer is "yes," type of consolidation _____

If answer is "no," list the owners and tract descriptions which have actually been consolidated. (Use reverse side of this form if necessary.) _____

No allowable will be assigned to the well until all interests have been consolidated (by communitization, unitization, forced-pooling, or otherwise) or until a non-standard unit, eliminating such interests, has been approved by the Division.



CERTIFICATION

I hereby certify that the information contained herein is true and complete to the best of my knowledge and belief.

Marshall C. Watson
Name
Marshall C. Watson
Position
Chief Engineer
Company
Austra-Tex Oil Company
Date
March 16, 1987

I hereby certify that the well location shown on this plat was plotted from field notes of actual surveys made by me or under my supervision, and that the same is true and correct to the best of my knowledge and belief.

Date Surveyed
William W. Mahnk
Registered Professional Engineer
and/or Land Surveyor
#8466

Certificate No.

8466