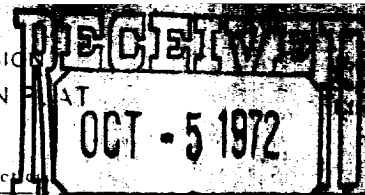


NEW MEXICO OIL CONSERVATION COMMISSION  
WELL LOCATION AND ACREAGE DEDICATION PLAT



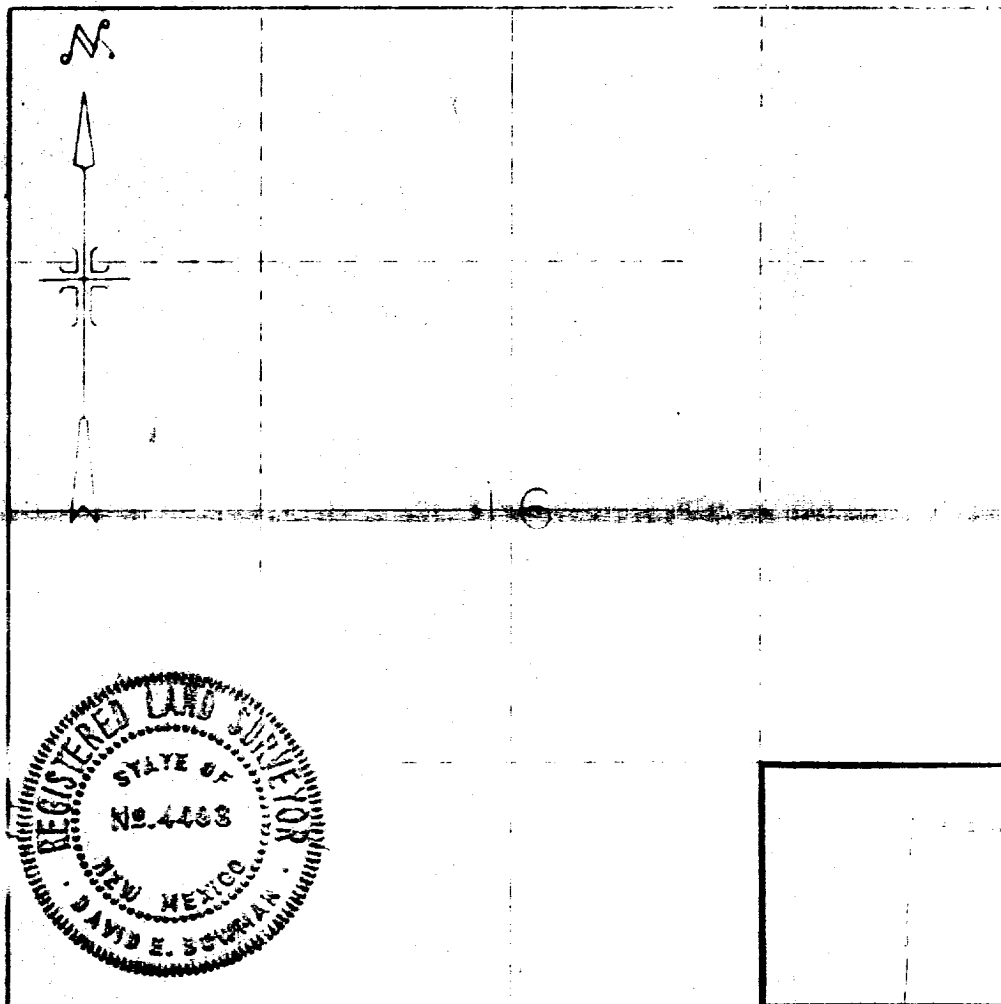
All distances must be from the outer boundaries of the Section

Operator <b>Odessa Natural Corporation</b>		Lease <b>VERMEJO 16</b>		OIL CONSERVATION COMM. <b>Santa Fe</b>	
Unit Letter <b>P</b>	Section <b>16</b>	Township <b>30N</b>	Range <b>18E</b>	<b>Colfax</b>	
Actual Footage Location of Well: <b>938</b> feet from the <b>south</b> line and <b>514</b> <b>east</b> line					
Ground Level Elev. <b>8027</b>	Producing Formation <b>Trinidad</b>		Well Name <b>Wildcat</b>		Dedicated Acreage <b>40</b> Acres

1. Outline the acreage dedicated to the subject well in colored pencil or ink lines on the plat below.
2. If more than one lease is dedicated to the well, outline each and identify the ownership thereof (both as to working interest and royalty).
3. If more than one lease of different ownership is dedicated to the well, have the interests of all owners been consolidated by communitization, unitization, force-pooling, or otherwise?

If answer is "no" list the owners and tract descriptions which have not been consolidated. (Use reverse side of this form if necessary.)

No allowable will be assigned to the well until all interests have been consolidated by communitization, unitization, forced-pooling, or otherwise) or until a non-standard unit delineation such as that has been approved by the Commission.



CERTIFICATION

I hereby certify that the information contained herein is true and complete to the best of my knowledge and belief.

*John J. Strojny*  
John J. Strojny, Jr.

Manager - Production

Odessa Natural Corporation

October 2, 1972

I hereby certify that the well location shown on this plat was plotted from field notes of actual surveys made by me or under my supervision, and that the same is true and correct to the best of my knowledge and belief.

Sept. 29, 1972

Professional Engineer

*David E. Bowman*  
David E. Bowman