

**NEW MEXICO OIL CONSERVATION COMMISSION
WELL LOCATION AND ACREAGE DEDICATION PLAT**

Form C-102
Supersedes C-100
Effective 1-4-65

All distances must be from the outer boundaries of the Section.

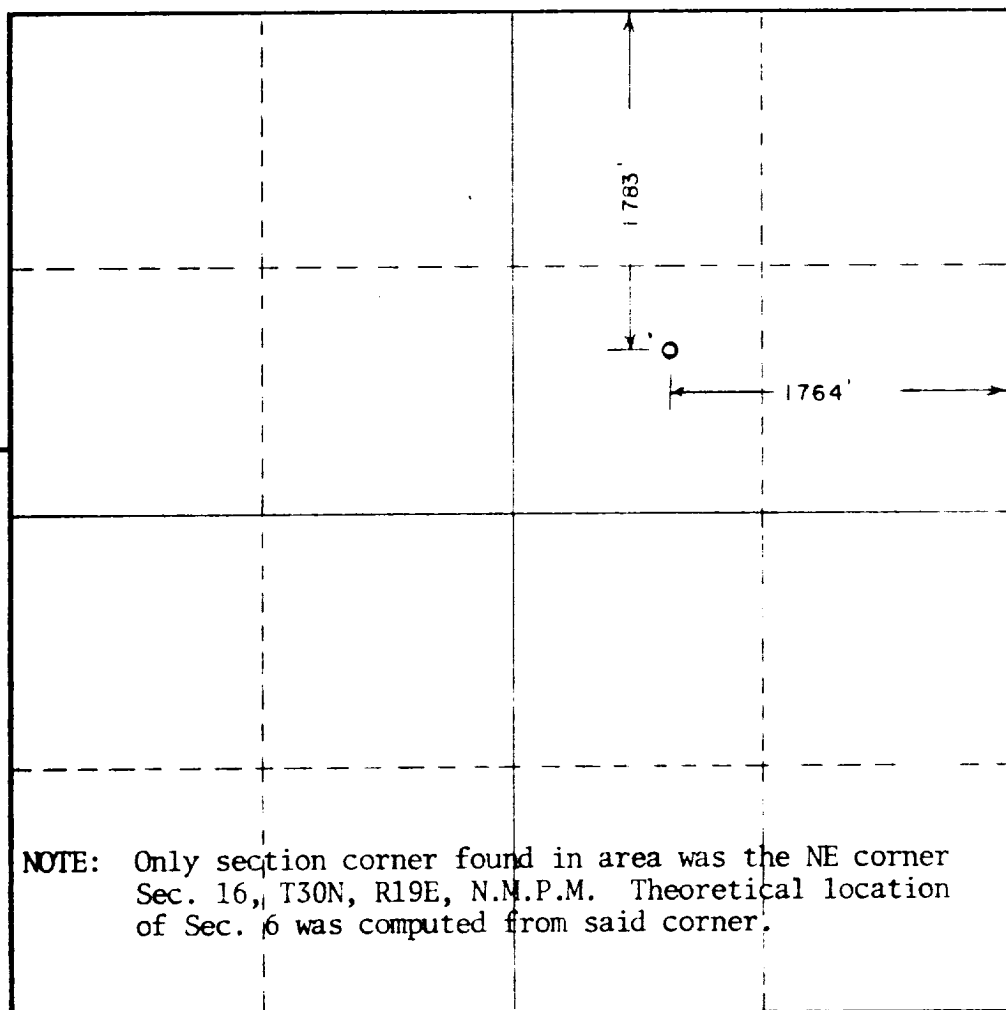
Operator American Fuels Corporation			Lease W.- S Ranch NM-B		Well No. W-1
Unit Letter G	Section 6	Township 30N	Range 19E	County Colfax	
Actual Footage Location of Well: <div style="display: flex; justify-content: space-between;"> 1783 feet from the north line and 1764 feet from the east line </div>					
Ground Level Elev. 7319	Producing Formation Dakota	Pool Wildcat		Dedicated Acreage: Acres	

1. Outline the acreage dedicated to the subject well by colored pencil or hachure marks on the plat below.
2. If more than one lease is dedicated to the well, outline each and identify the ownership thereof (both as to working interest and royalty).
3. If more than one lease of different ownership is dedicated to the well, have the interests of all owners been consolidated by communitization, unitization, force-pooling, etc?

☐ Yes ☐ No If answer is "yes," type of consolidation _____

If answer is "no," list the owners and tract descriptions which have actually been consolidated. (Use reverse side of this form if necessary.) _____

No allowable will be assigned to the well until all interests have been consolidated (by communitization, unitization, forced-pooling, or otherwise) or until a non-standard unit, eliminating such interests, has been approved by the Commission.



CERTIFICATION

I hereby certify that the information contained herein is true and complete to the best of my knowledge and belief.

Name _____

Agent

Position _____

American Fuels Corp.

Company _____

5/14/73

Date _____

I hereby certify that the well location shown on this plat was plotted from field notes of actual surveys made by me or under my supervision, and that the same is true and correct to the best of my knowledge and belief.

5/14/73

Date Surveyed _____

J. E. Ballew, Jr., LS #3948

Registered Professional Engineer
and/or Land Surveyor

J. E. Ballew, Jr.

Certificate No. _____

