

**NEW MEXICO OIL CONSERVATION COMMISSION  
WELL LOCATION AND ACREAGE DEDICATION PLAT**

Form C-102  
Supersedes C-128  
Effective 1-1-65

All distances must be from the outer boundaries of the Section.

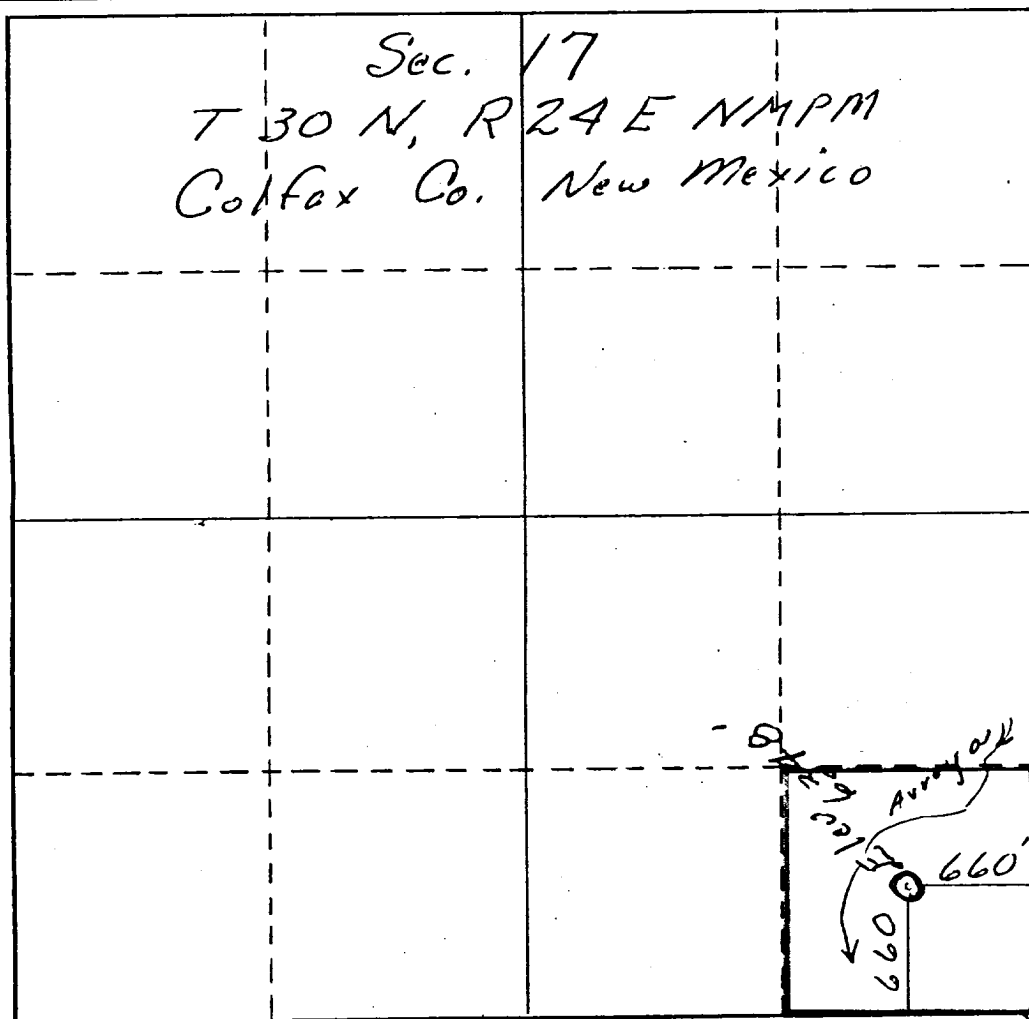
Operator Brooks Exploration Inc., Robert E. Mead			Lease McAuliffe Ranch		Well No. 1
Unit Letter P	Section 17	Township 30N	Range 24E	County Colfax	
Actual Footage Location of Well: . 660 feet from the      East      line and      660      feet from the      South      line					
Ground Level Elev. 6348'	Producing Formation Cretaceous - Niobrara		Pool Wildcat		Dedicated Acreage: 40      Acres

1. Outline the acreage dedicated to the subject well by colored pencil or hachure marks on the plat below.
2. If more than one lease is dedicated to the well, outline each and identify the ownership thereof (both as to working interest and royalty).
3. If more than one lease of different ownership is dedicated to the well, have the interests of all owners been consolidated by communitization, unitization, force-pooling, etc?

☐ Yes    ☐ No    If answer is "yes," type of consolidation \_\_\_\_\_

If answer is "no," list the owners and tract descriptions which have actually been consolidated. (Use reverse side of this form if necessary.) \_\_\_\_\_

No allowable will be assigned to the well until all interests have been consolidated (by communitization, unitization, forced-pooling, or otherwise) or until a non-standard unit, eliminating such interests, has been approved by the Commission.



**CERTIFICATION**

I hereby certify that the information contained herein is true and complete to the best of my knowledge and belief.

Name  
*William R. Clark*  
Position  
Geologist

Company  
Brooks Exploration Inc.

Date  
November 17, 1977

I hereby certify that the well location shown on this plat was plotted from field notes of actual surveys made by me or under my supervision, and that the same is true and correct to the best of my knowledge and belief.

Date Surveyed  
11-13-77

Registered Professional Engineer and/or Land Surveyor

*William R. Clark*  
Certificate No.  
4002

