

NEW MEXICO OIL CONSERVATION COMMISSION
WELL LOCATION AND ACREAGE DEDICATION PLAT

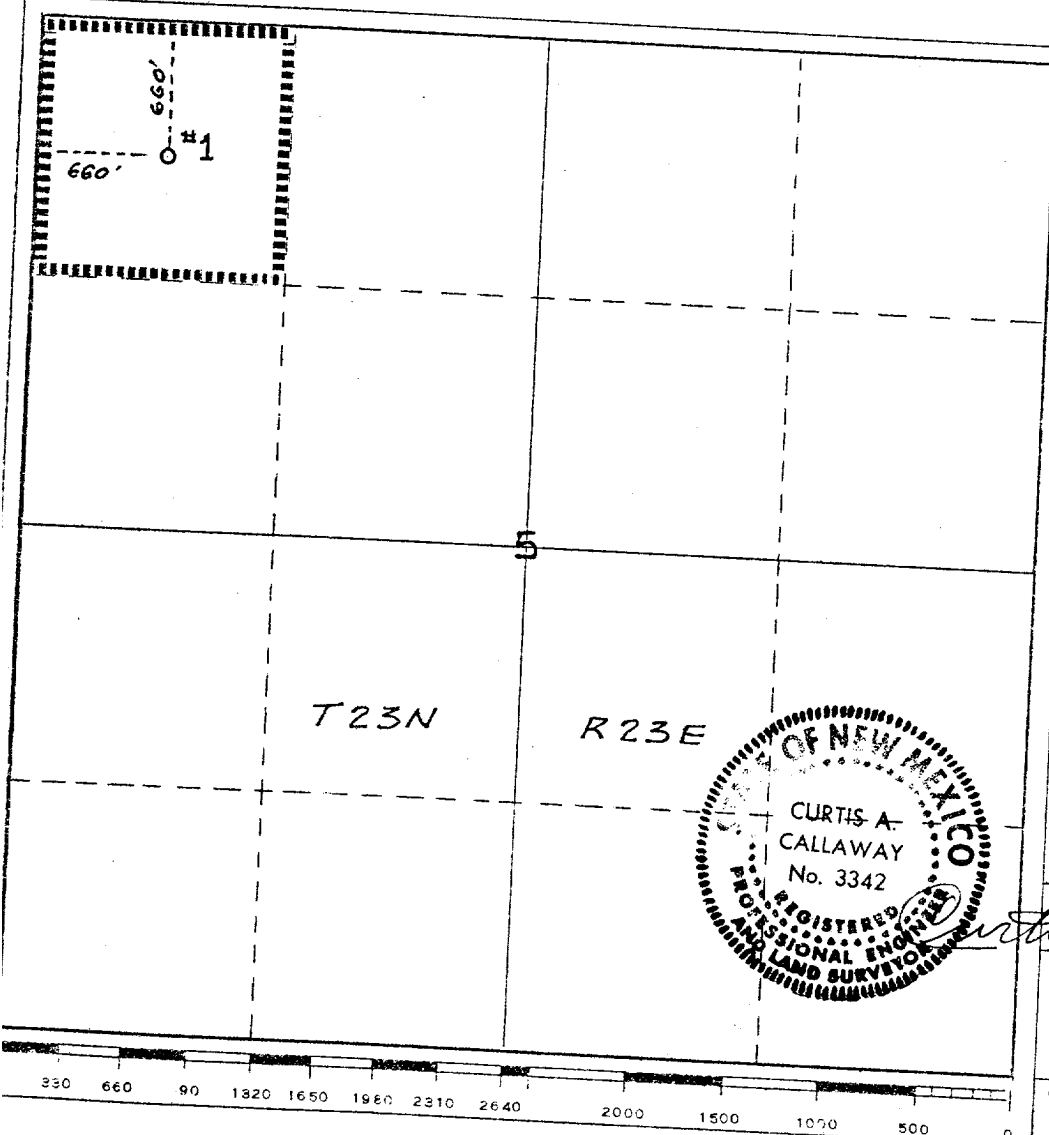
Form C-102
Supersedes C-128
Effective 1-1-65

All distances must be from the outer boundaries of the Section.

| | | | | | | | | |
|--|---------------------|--|--------------------------|-------------------------|--|---------------------------------------|--|--|
| Operator Mobil Oil Corporation | | | Lease State AH | | | Well No. 1 | | |
| Unit Letter D | Section 5 | Township 23N | Range 23E | County Colfax | | | | |
| Actual Footage Location of Well: 660 feet from the North line and 660 feet from the West line | | | | | | | | |
| Ground Level Elev. Furnished later | | Producing Formation Granite Wash | | Pool Wildcat | | Dedicated Acreage: 40 Acres | | |

1. Outline the acreage dedicated to the subject well by colored pencil or hachure marks on the plat below.
2. If more than one lease is dedicated to the well, outline each and identify the ownership thereof (both as to working interest and royalty).
3. If more than one lease of different ownership is dedicated to the well, have the interests of all owners been consolidated by communitization, unitization, force-pooling, etc?
☐ Yes ☐ No If answer is "yes," type of consolidation _____

If answer is "no," list the owners and tract descriptions which have actually been consolidated. (Use reverse side of this form if necessary.) _____
No allowable will be assigned to the well until all interests have been consolidated (by communitization, unitization, forced-pooling, or otherwise) or until a non-standard unit, eliminating such interests, has been approved by the Commission.



CERTIFICATION

I hereby certify that the information contained herein is true and complete to the best of my knowledge and belief.

Name
A.D. Bond
Position
Reg. Engr. Coordinator
Company
Mobil Oil Corporation
Date
December 9, 1977

I hereby certify that the well location shown on this plat was plotted from field notes of actual surveys made by me or under my supervision, and that the same is true and correct to the best of my knowledge and belief.

12-13-77
Date Surveyed
Curtis A. Callaway
Registered Professional Engineer
and/or Land Surveyor

3342
Certificate No.