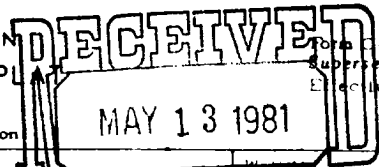


NEW MEXICO OIL CONSERVATION COMMISSION
WELL LOCATION AND ACREAGE DEDICATION PLAT



Form O-102
Supersedes C-128
Effective 1-1-65

All distances must be from the outer boundaries of the Section

Operator Pennzoil Company		Lease Vermejo Ranch	
Unit Letter B	Section 34	Township 31North	Range 17East
		County Colfax	SANTA FE

Approximate Location of Well:

330 feet from the **North** line and **1650** feet from the **East** line

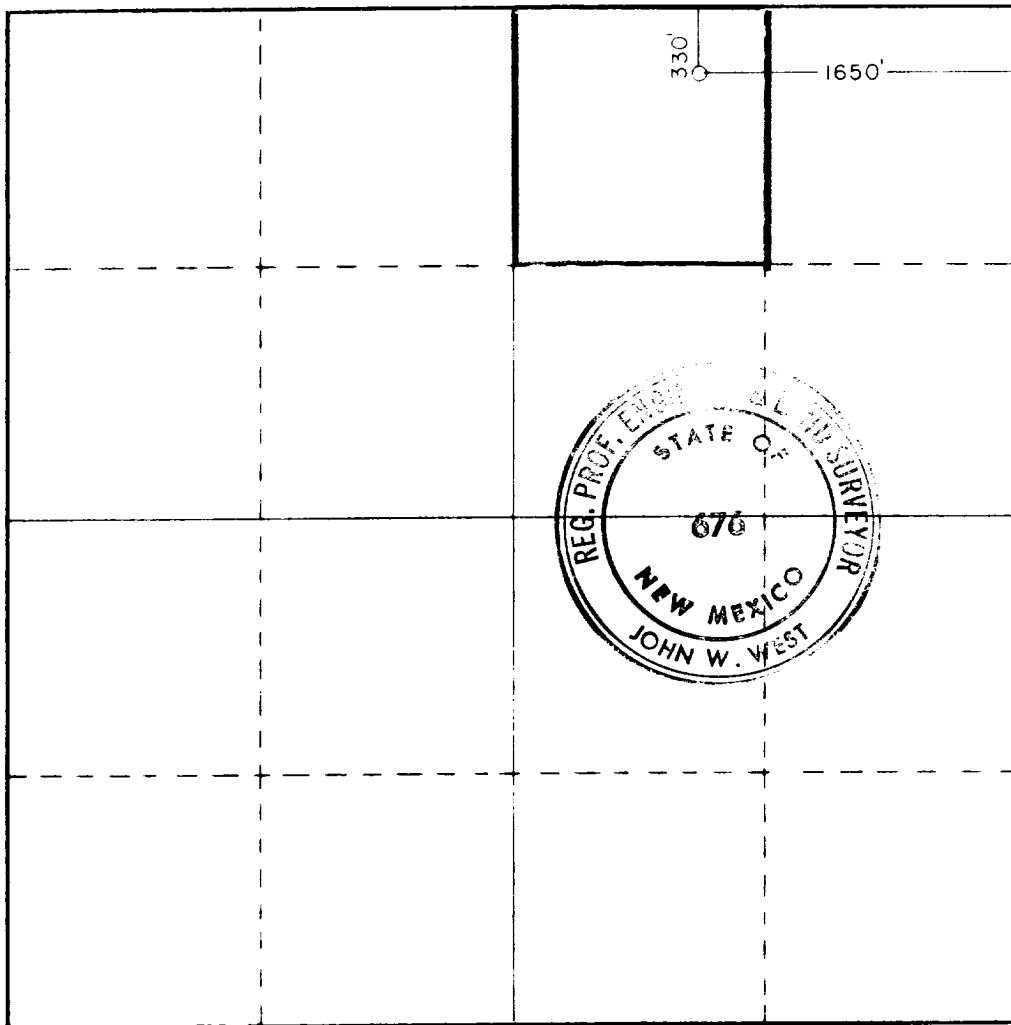
Ground Level Elev. 8269'	Producing Formation Niobrara	Pool Wildcat	Estimated Acreage 40
------------------------------------	--	------------------------	--------------------------------

1. Outline the acreage dedicated to the subject well by colored pencil or hachure marks on the plat below.
2. If more than one lease is dedicated to the well, outline each and identify the ownership thereof (both as to working interest and royalty).
3. If more than one lease of different ownership is dedicated to the well, have the interests of all owners been consolidated by communitization, unitization, force-pooling, etc?

☐ Yes ☒ No If answer is "yes," type of consolidation _____

If answer is "no," list the owners and tract descriptions which have actually been consolidated (Use reverse side of this form if necessary.) Pennzoil owns surface and minerals in fee

No allowable will be assigned to the well until all interests have been consolidated (by communitization, unitization, forced-pooling, or otherwise) or until a non-standard unit, eliminating such interests, has been approved by the Commission.



CERTIFICATION

I hereby certify that the information contained herein is true and complete to the best of my knowledge and belief

Name
Kenneth R. Huddleston
Position
Sr. V. P. Production
Company
Pennzoil Exp. & Prod. Co.
Date
May 8, 1981

I hereby certify that the well location shown on this plat was plotted from field notes of actual surveys made by me or under my supervision, and that the same is true and correct to the best of my knowledge and belief.

Date Surveyed
April 24, 1981
Registered Professional Engineer and/or Land Surveyor
John W. West
Certificate No. **JOHN W. WEST 676**
PATRICK A. ROMERO 6663
Ronald J. Eidson 3239

0 330 660 990 1320 1650 1980 2310 2640 2970 3300 3630 3960 4290 4620 4950 5280 5610 5940 6270 6600