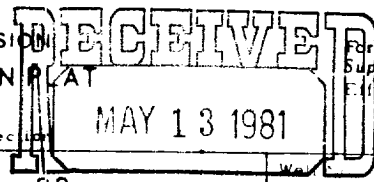


NEW MEXICO OIL CONSERVATION COMMISSION
WELL LOCATION AND ACREAGE DEDICATION PLAT



All distances must be from the outer boundaries of the Section

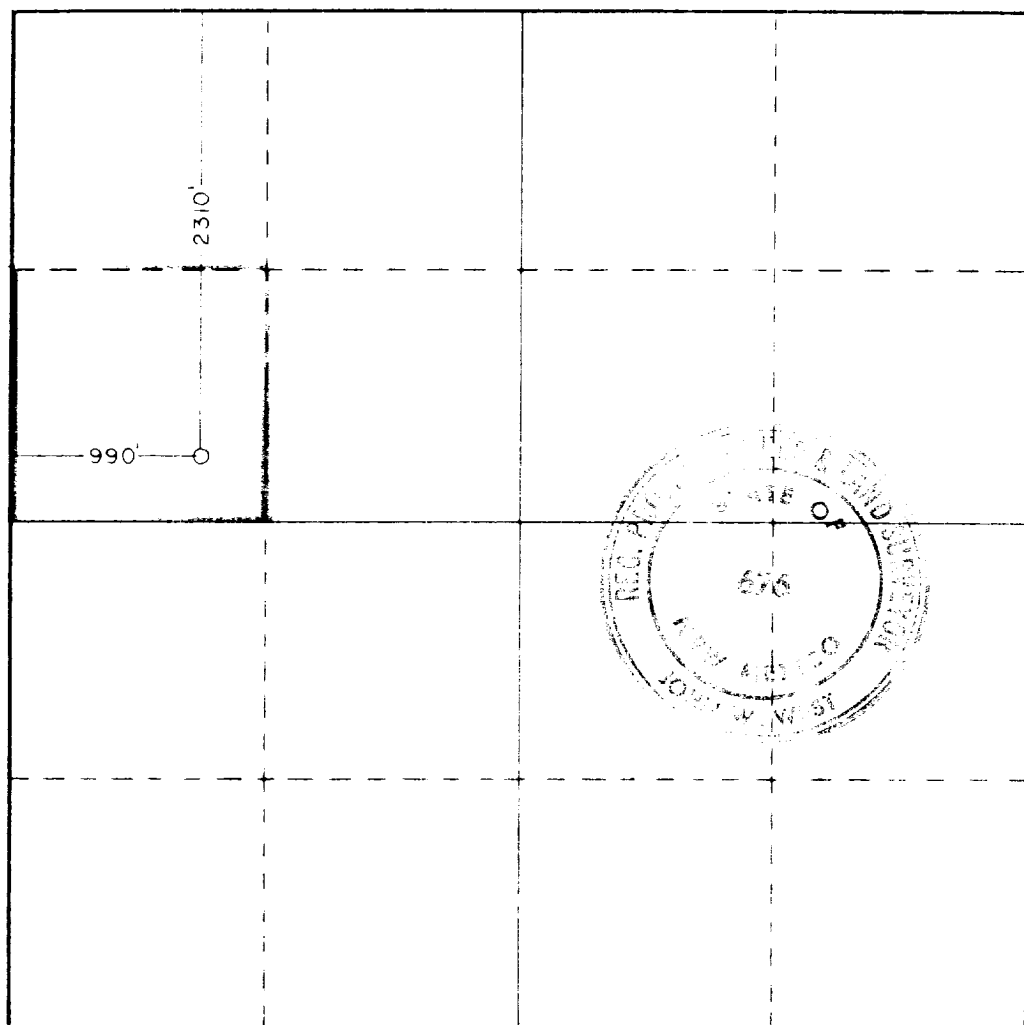
Operator Pennzoil Company		Lease Vernejo Rancho		Well CONSERVATION DIVISION 3	
Tract Letter E	Section 33	Township 32North	Range 17East	County SANTA FE Colfax	
Actual Portage Location of Well: 2310 feet from the North line and 990 feet from the West line					
Ground Level Elev. 8524'	Producing Formation Niobrara		Rock Wildcat		Dedicated Acreage 40 Acres

1. Outline the acreage dedicated to the subject well by colored pencil or hatchure marks on the plat below.
2. If more than one lease is dedicated to the well, outline each and identify the ownership thereof (both as to working interest and royalty).
3. If more than one lease of different ownership is dedicated to the well, have the interests of all owners been consolidated by communitization, unitization, force-pooling, etc?

☐ Yes ☒ No If answer is "yes," type of consolidation _____

If answer is "no," list the owners and tract descriptions which have actually been consolidated. (Use reverse side of this form if necessary.) Pennzoil owns surface and minerals in fee

No allowable will be assigned to the well until all interests have been consolidated (by communitization, unitization, forced-pooling, or otherwise) or until a non-standard unit, eliminating such interests, has been approved by the Commission.



CERTIFICATION

I hereby certify that the information contained herein is true and complete to the best of my knowledge and belief.

Signature
Kenneth R. Huddleston
Position
Sr. V. P. Production
Company
Pennzoil Exp. & Prod. Co.
Date
May 8, 1981

I hereby certify that the well location shown on this plat was plotted from field notes of actual surveys made by me or under my supervision and that the same is true and correct to the best of my knowledge and belief.

Date Surveyed
April 25, 1981
Registered Address of Surveyor
and Land Surveyor

John W. West
Certificate No. **JOHN W. WEST 878**
PATRICK A. ROMERO 6663
Ronald J. Eidson 3239

0 330 660 990 1320 1650 1980 2310 2640 2970 3300 3630 3960 4290 4620 4950 5280 5610 5940 6270 6600 6930 7260 7590 7920 8250 8580 8910 9240 9570 9900