

All distances must be from the outer boundaries of the Section.

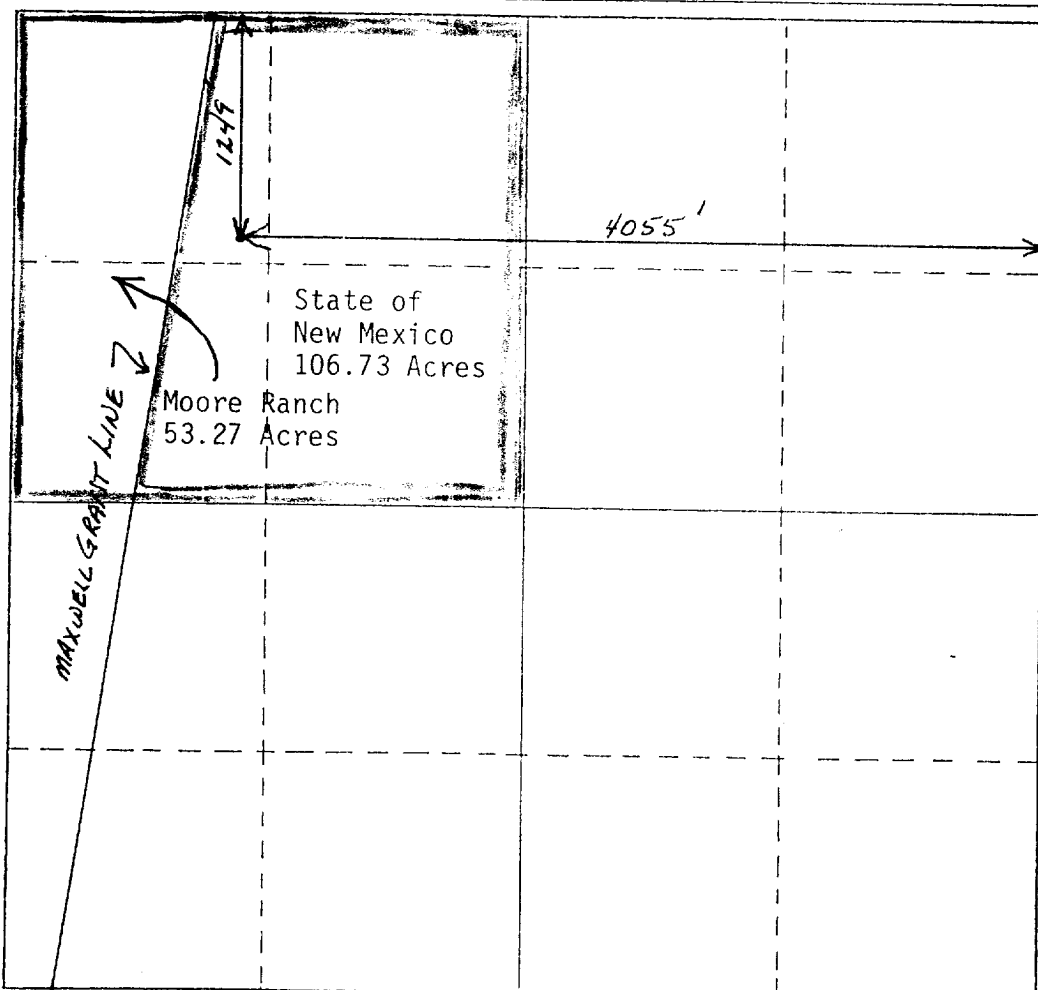
Operator Export Petroleum Corporation			Lease Moore Ranch - State		Well No. 1
Unit Letter D	Section 16	Township 29 North	Range 24 East	County Colfax	
Actual Footage Location of Well: 1249 feet from the North line and 4055 feet from the East line					
Ground Level Elev. 6265	Producing Formation		Pool Wildcat	Dedicated Acreage: 160 Acres	

1. Outline the acreage dedicated to the subject well by colored pencil or hachure marks on the plat below.
2. If more than one lease is dedicated to the well, outline each and identify the ownership thereof (both as to working interest and royalty).
3. If more than one lease of different ownership is dedicated to the well, have the interests of all owners been consolidated by communitization, unitization, force-pooling, etc?

☐ Yes ☐ No If answer is "yes," type of consolidation \_\_\_\_\_

If answer is "no," list the owners and tract descriptions which have actually been consolidated. (Use reverse side of this form if necessary.) \_\_\_\_\_

No allowable will be assigned to the well until all interests have been consolidated (by communitization, unitization, forced-pooling, or otherwise) or until a non-standard unit, eliminating such interests, has been approved by the Division.



CERTIFICATION

I hereby certify that the information contained herein is true and complete to the best of my knowledge and belief.

*J. H. Klaeger, Jr.*  
Name  
J. H. Klaeger, Jr.

Position  
Field Superintendent

Company  
Export Petroleum Corporation

Date  
May 15, 1987

I hereby certify that the well location shown on this plat was plotted from field notes of actual surveys made by me or under my supervision, and that the same is true and correct to the best of my knowledge and belief.

Date Surveyed

Registered Land Surveyor

Certificate No.

