

Well A

NEW MEXICO OIL CONSERVATION COMMISSION WELL LOCATION AND ACREAGE DEDICATION PLAT

Form C-102
Supersedes C-128
Effective 1-1-65

All distances must be from the outer boundaries of the Section.

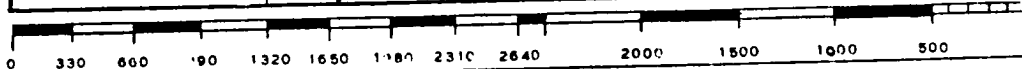
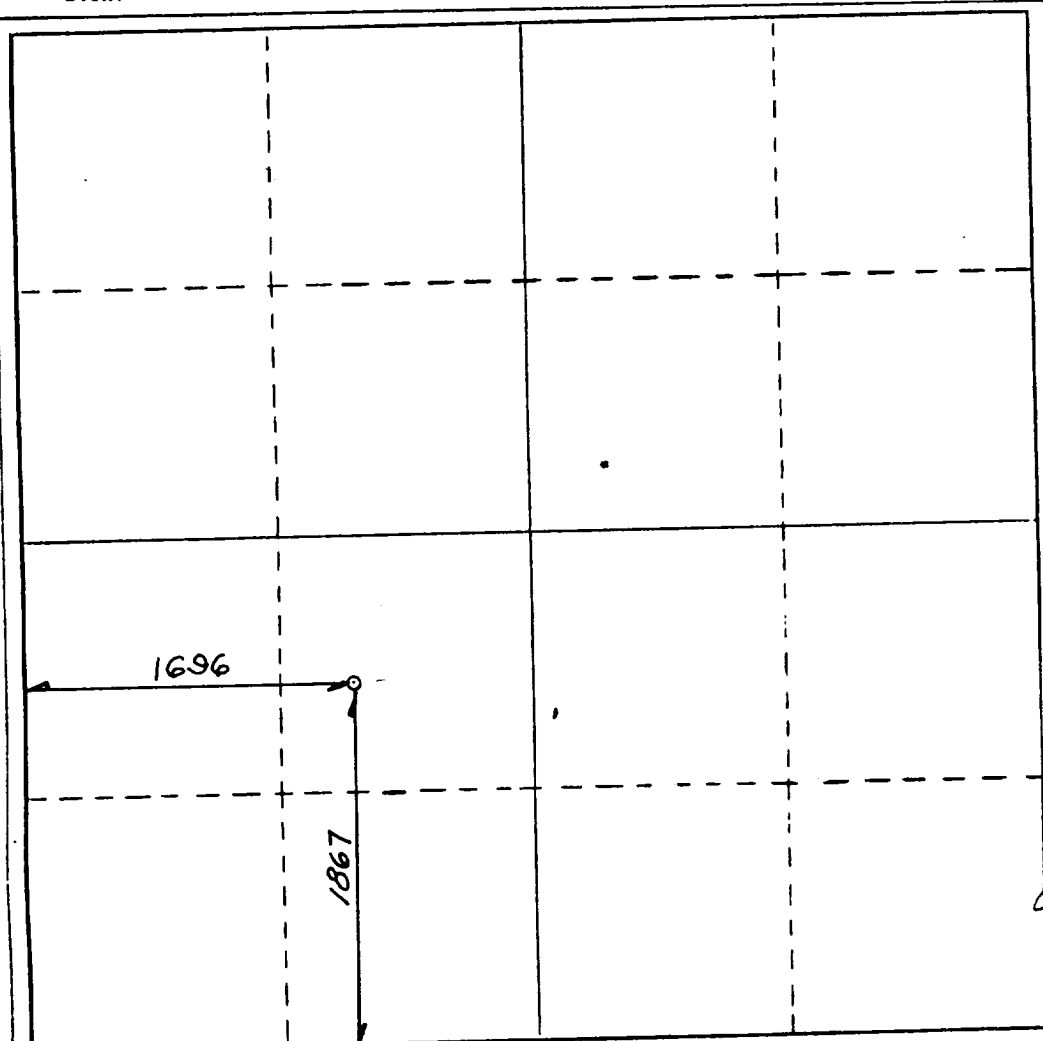
Operator Pennzoil Exploration & Production Co.			Lease Van Bremmer Canyon		Well No. 321K
Unit Letter K	Section 32	Township T30N	Range R19E	County COLFAX	
Actual Footage Location of Well: 1696 feet from the WEST line and 1867 feet from the SOUTH line					
Ground Level Elev. 7641	Producing Formation Vermejo	Pool		Dedicated Acreage: Acres	

1. Outline the acreage dedicated to the subject well by colored pencil or hachure marks on the plat below.
2. If more than one lease is dedicated to the well, outline each and identify the ownership thereof (both as to working interest and royalty).
3. If more than one lease of different ownership is dedicated to the well, have the interests of all owners been consolidated by communitization, unitization, force-pooling, etc?

☐ Yes ☐ No If answer is "yes," type of consolidation _____

If answer is "no," list the owners and tract descriptions which have actually been consolidated. (Use reverse side of this form if necessary.) _____

No allowable will be assigned to the well until all interests have been consolidated (by communitization, unitization, forced-pooling, or otherwise) or until a non-standard unit, eliminating such interests, has been approved by the Commission.



CERTIFICATION

I hereby certify that the information contained herein is true and complete to the best of my knowledge and belief.

[Signature]

Name

R. D. Osterhout

Position

Project Manager

Company

PEPCO

Date

May 8, 1989

I hereby certify that the well location shown on this plat was plotted from field notes of actual surveys made by me or under my supervision, and that the same is true and correct to the best of my knowledge and belief.

APPROVED 27 MAY 1989

Date Surveyed

Registered Professional Engineer
and/or Land Surveyor

5103

NEW MEXICO

NO. 5103

Certification No. 2. SHIELDS