

Well G

NEW MEXICO OIL CONSERVATION COMMISSION
WELL LOCATION AND ACREAGE DEDICATION PLAT

Form C-102
Supersedes C-128
Effective 1-1-65

All distances must be from the outer boundaries of the Section.

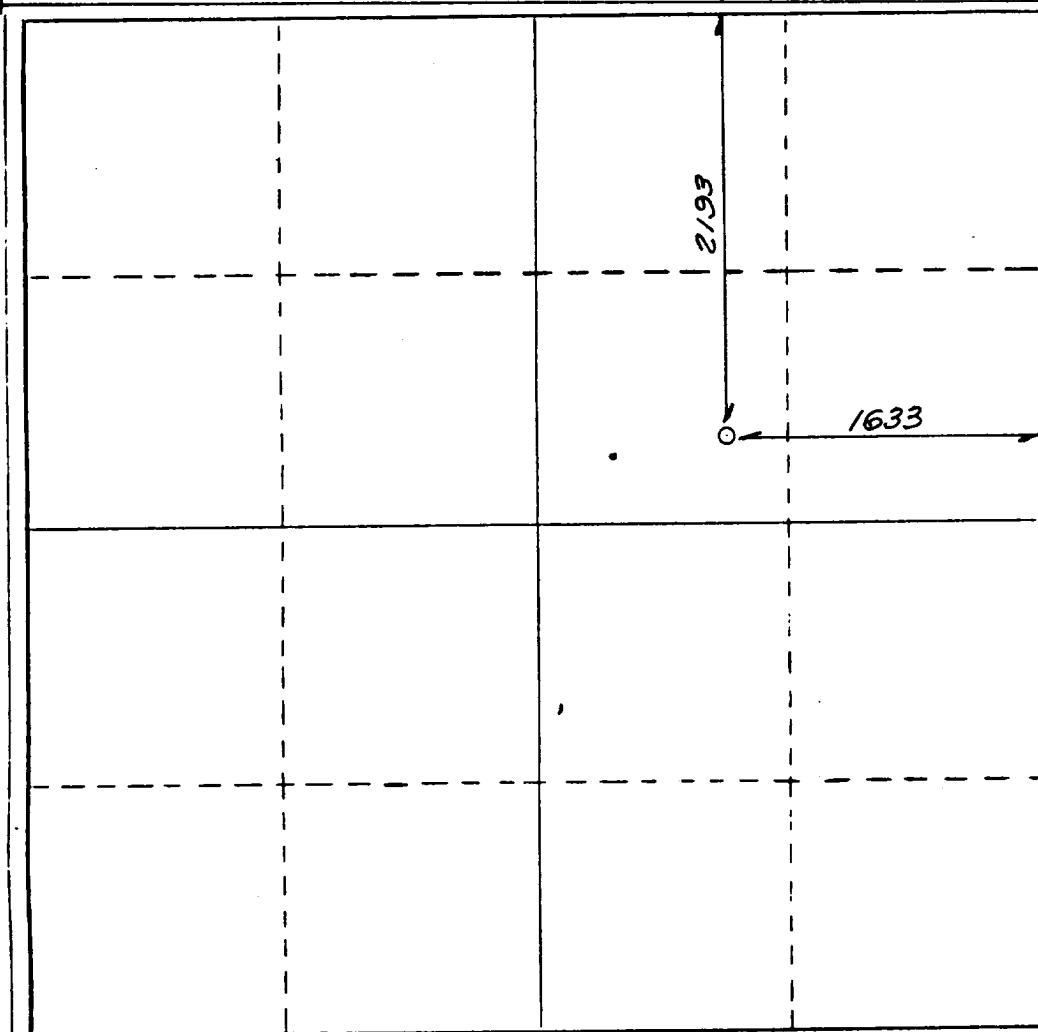
Operator Pennzoil Exploration & Production Co.			Lease Van Bremmer Canyon		Well No. 311G
Unit Letter G	Section 31	Township T30N	Range R19E	County COLFAX	
Actual Footage Location of Well: 1633 feet from the EAST line and 2193 feet from the NORTH line					
Ground Level Elev. 7692	Producing Formation Vermejo		Pool		Dedicated Acreage: Acres

1. Outline the acreage dedicated to the subject well by colored pencil or hatchure marks on the plat below.
2. If more than one lease is dedicated to the well, outline each and identify the ownership thereof (both as to working interest and royalty).
3. If more than one lease of different ownership is dedicated to the well, have the interests of all owners been consolidated by communitization, unitization, force-pooling, etc?

☐ Yes ☐ No If answer is "yes," type of consolidation _____

If answer is "no," list the owners and tract descriptions which have actually been consolidated. (Use reverse side of this form if necessary.) _____

No allowable will be assigned to the well until all interests have been consolidated (by communitization, unitization, forced-pooling, or otherwise) or until a non-standard unit, eliminating such interests, has been approved by the Commission.



CERTIFICATION

I hereby certify that the information contained herein is true and complete to the best of my knowledge and belief.

[Signature]

Name
R. D. Osterhout

Position
Project Manager

Company
PEPCO

Date
May 8, 1989

I hereby certify that the well location shown on this plat was plotted from field notes of actual surveys made by me or under my supervision, and that the same is true and correct to the best of my knowledge and belief.

APPROVED **1989**

Date Approved
5108
Registered Professional Engineer
and/or Land Surveyor

N. M. L. E. S. NO. 5108
Certified **No. E. SHIELDS**