

NEW MEXICO OIL CONSERVATION COMMISSION WELL LOCATION AND ACREAGE DEDICATION PLAT

Form C-103
Supersedes C-128
Effective 1-1-85

All distances must be from the outer boundaries of the Section.

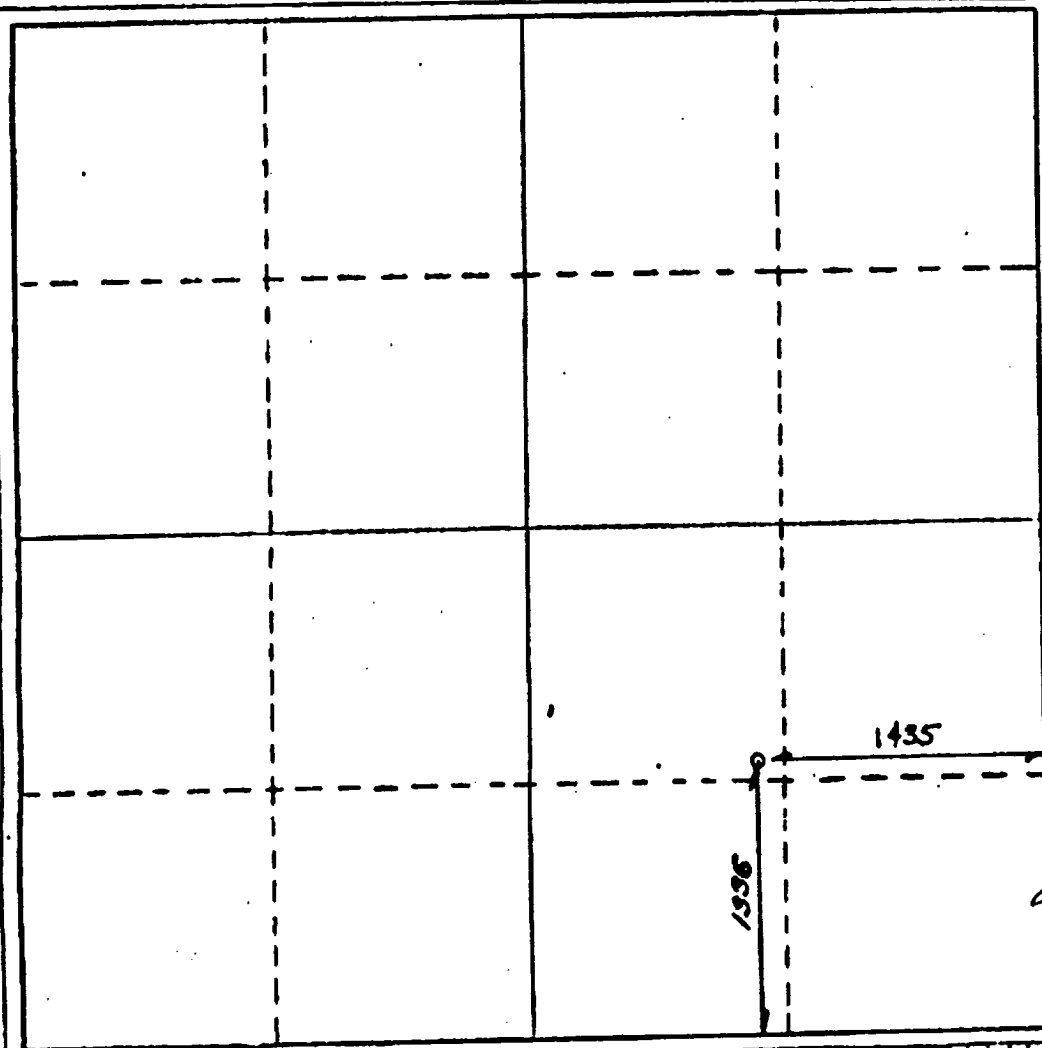
Operator Pennzoil Exploration and Production Company		Lease Valdez Canyon		Well No. 012 J
Unit Letter J	Section 1	Township T29N	Range R18E	County COLFAX
Actual Footage Location of Well: 1336 feet from the SOUTH line and 1435 feet from the EAST line				
Ground Level Elev. 7917	Producing Formation Vermejo	Pool Wildcat	Dedicated Acreage: 320 Acres	

1. Outline the acreage dedicated to the subject well by colored pencil or hachure marks on the plat below.
2. If more than one lease is dedicated to the well, outline each and identify the ownership thereof (both as to working interest and royalty).
3. If more than one lease of different ownership is dedicated to the well, have the interests of all owners been consolidated by communitization, unitization, force-pooling, etc?

☐ Yes ☐ No If answer is "yes," type of consolidation _____

If answer is "no," list the owners and tract descriptions which have actually been consolidated. (Use reverse side of this form if necessary.) _____

No allowable will be assigned to the well until all interests have been consolidated (by communitization, unitization, forced-pooling, or otherwise) or until a non-standard unit, eliminating such interests, has been approved by the Commission.



CERTIFICATION

I hereby certify that the information contained herein is true and complete to the best of my knowledge and belief.

Name
R. D. Osterhout
Position
Project Manager
Company
PETCO
Date
June 21, 1989

I hereby certify that the well location shown on this plat was plotted from field notes of actual surveys made by me or under my supervision, and that the same is true and correct to the best of my knowledge and belief.

JUNE 21, 1989
Date
Professional Engineer
and/or Land Surveyor
N.M. STATE NO. 5183
Certificate

STATE PLANE COOR. Y = 2,101,265.5306 X = 311,638.5373