

NEW MEXICO OIL CONSERVATION COMMISSION
WELL LOCATION AND ACREAGE DEDICATION PLAT

All distances must be from the outer boundaries of the Section

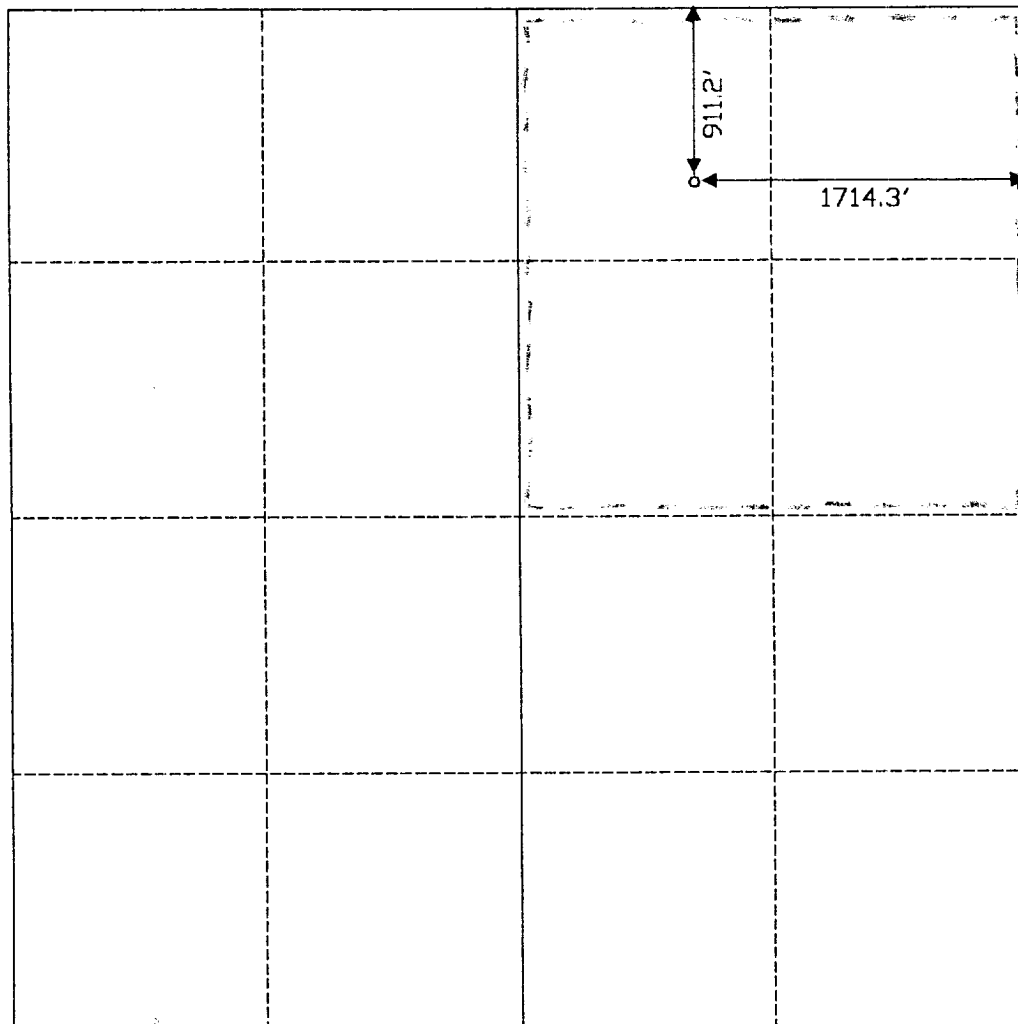
| | | | | |
|--|----------------------|-----------------------------|--------------------------------|-----------------------------|
| Operator PENNZOIL E & P COMPANY | | Lease | | Well No. 3119011B |
| Unit Letter B | Section 01 | Township 31 NORTH | Range 19 EAST | County COLFAX |
| Actual Footage Location of Well 911.2 feet from the NORTH line and 1714.3 feet from the EAST line | | | | |
| Ground Level Elev. 8261.33 | Producing Formation | Pool | Dedicated Acreage Acres | |

- Outline the acreage dedicated to the subject well by colored pencil or hatchure marks on the plat below.
- If more than one lease is dedicated to the well, outline each and identify the ownership thereof (both as to working interest and royalty).
- If more than one lease of different ownership is dedicated to the well, have the interests of all owners been consolidated by communitization, unitization, force-pooling, etc?

☐ YES ☐ NO If answer is 'Yes' type of consolidation _____

If answer is 'No' list the owners and tract descriptions which have actually been consolidated. (Use reverse side of this form if necessary.) _____

No allowable will be assigned to the well until all interests have been consolidated (by communitization, unitization, forced pooling, or otherwise) or until a non-standard unit, eliminating such interests, has been approved by the Commission.



CERTIFICATION

I hereby certify that the information contained herein is true and complete to the best of my knowledge and belief.

Paul J. Bruce
Name

Position

Company

Date

I hereby certify that the well location shown on this plat was plotted from field notes of actual surveys made by me or under my supervision, and that the same is true and correct to the best of my knowledge and belief.

JULY 09, 1998

Date Surveyed

Registered Professional Engineer
and/or Land Surveyor

Certificate No.

N.M.L.S. NO. 5108105

