

NEW MEXICO OIL CONSERVATION COMMISSION
WELL LOCATION AND ACREAGE DEDICATION PLAT

Form C-102
 Supersedes C-128
 Effective 1-1-65

All distances must be from the outer boundaries of the Section.

RECEIVED
 CONSERVATION COM.
 SANTA FE

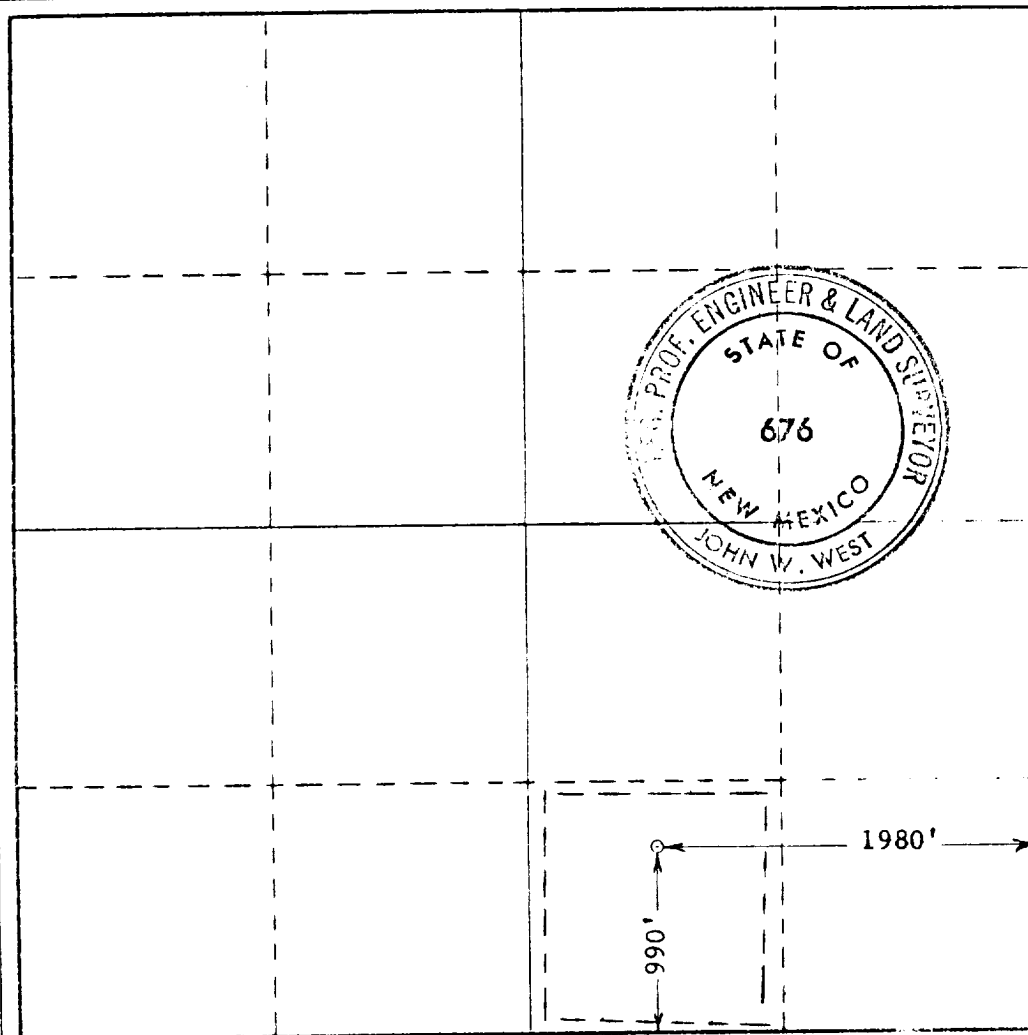
Operator CONTINENTAL OIL CO.			Lease WILLIAMS FED. "A"		Well No. 2
Unit Letter O	Section 13	Township 5 NORTH	Range 23 EAST	County GUADALUPE	
Actual Footage Location of Well:					
1980		feet from the EAST	line and	990	feet from the SOUTH
Ground Level Elev. 4386.7	Producing Formation		Pool Willcat	Dedicated Acreage: 4.0	

1. Outline the acreage dedicated to the subject well by colored pencil or hachure marks on the plat below.
2. If more than one lease is dedicated to the well, outline each and identify the ownership thereof (both as to working interest and royalty).
3. If more than one lease of different ownership is dedicated to the well, have the interests of all owners been consolidated by communitization, unitization, force-pooling, etc?

☐ Yes, ☐ No If answer is "yes," type of consolidation _____

If answer is "no," list the owners and tract descriptions which have actually been consolidated. (Use reverse side of this form if necessary.) _____

No allowable will be assigned to the well until all interests have been consolidated (by communitization, unitization, forced-pooling, or otherwise) or until a non-standard unit, eliminating such interests, has been approved by the Commission.



CERTIFICATION

I hereby certify that the information contained herein is true and complete to the best of my knowledge and belief.

By: *[Signature]*
 District Supervisor
 Continental Oil Co.
 Date: **December 17, 1971**

I hereby certify that the well location shown on this plat was plotted from field notes of actual surveys made by me or under my supervision, and that the same is true and correct to the best of my knowledge and belief.

Date Surveyed
DECEMBER 16, 1971

Registered Professional Engineer and/or Land Surveyor

[Signature]
 Certificate No. **676**

COUNTY GUADALUPE FIELD Wildcat STATE NM 30-019-20006
 OPR CONTINENTAL OIL CO. MAP
 2 Williams - Federal "A"
 Sec 13, T-5-N, R-23-E CO-ORD
 990' FSL, 1980' FEL of Sec

CLASS	EL	
	FORMATION	DATUM
Cmp 12-30-71		
CSG & SX - TUBING		
LOGS EL GR RA IND HC A		
	TD 1285'	

PLUGGED & ABANDONED

Distribution limited and publication prohibited by subscribers' agreement.
 Reproduction rights reserved by Williams & Lee Scouting Service, Inc.

CONT. PROP DEPTH 1450' TYPE RT
 DATE

1-17-72 F.R. 1-18-72; Opr's Elev. 4387' GL
 PD 1450' RT (Glorieta)
 TD 1285'; P&A (Tight)
 2-27-72 TD 1285'; PLUGGED & ABANDONED
 Well Drilled Tight, Will Amend if information
 is released.
 4-1-72 COMPLETION REPORTED