

NO. OF COPIES RECEIVED	
DISTRIBUTION	
SANTA FE	
FILE	
U.S.G.S.	
LAND OFFICE	
OPERATOR	

# NEW MEXICO OIL CONSERVATION COMMISSION

Form C-101  
Revised 1-1-65

5A. Indicate Type of Lease	
STATE <input type="checkbox"/>	FEE <input checked="" type="checkbox"/>
5. State Oil & Gas Lease No.	

## APPLICATION FOR PERMIT TO DRILL, DEEPEN, OR PLUG BACK

1a. Type of Work		7. Unit Agreement Name	
b. Type of Well OIL WELL <input checked="" type="checkbox"/> GAS WELL <input type="checkbox"/> OTHER <input type="checkbox"/>		8. Farm or Lease Name <b>Scott Estate</b>	
2. Name of Operator <b>Samedan Oil Corporation</b>		9. Well No. <b>1</b>	
3. Address of Operator <b>900 Wall Towers East, Midland, Texas 79701</b>		10. Field and Pool, or Wildcat <b>Wildcat</b>	
4. Location of Well UNIT LETTER <b>G</b> LOCATED <b>1980</b> FEET FROM THE <b>North</b> LINE AND <b>1980</b> FEET FROM THE <b>East</b> LINE OF SEC. <b>15</b> TWP. <b>11N</b> RGE. <b>25E</b> NMPM		12. County <b>Guadalupe</b>	
18. Proposed Depth <b>700</b>		19A. Formation <b>Santa Rosa</b>	
20. Rotary or C.T. <b>Rotary</b>		21. Elevations (Show whether DF, RT, etc.) <b>4545 GL</b>	
21A. Kind & Status Plug. Bond <b>\$10,000 blanket</b>		21B. Drilling Contractor <b>Pennsylvania Drilg. Co.</b>	
22. Approx. Date Work will start <b>Sept. 15, 1978</b>			

23.

### bond PROPOSED CASING AND CEMENT PROGRAM

SIZE OF HOLE	SIZE OF CASING	WEIGHT PER FOOT	SETTING DEPTH	SACKS OF CEMENT	EST. TOP
7 7/8	5 1/2	14#	T.D.	150	Surface

It is our intent to drill the subject well to a depth of approx. 700' (or to the Santa Rosa Formation) with a 7 7/8" hole, core and run 5 1/2" 14# new casing to T.D., cement with a sufficient quantity of cement to circulate to surface. This well will be drilled using fresh water mud from spud to T.D. It has been deemed unnecessary to design a blowout preventer program in as much as it is known that no pressured zones exist in the area. This well is a strat test.

OIL CONSERVATION COMMISSION TO BE NOTIFIED  
WITHIN 24 HOURS OF BEGINNING OPERATIONS

APPROVAL VALID FOR 90 DAYS  
PERMIT EXPIRES 12-7-78  
UNLESS DRILLING UNDERWAY

IN ABOVE SPACE DESCRIBE PROPOSED PROGRAM: IF PROPOSAL IS TO DEEPEN OR PLUG BACK, GIVE DATA ON PRESENT PRODUCTIVE ZONE AND PROPOSED NEW PRODUCTIVE ZONE. GIVE BLOWOUT PREVENTER PROGRAM, IF ANY.

I hereby certify that the information above is true and complete to the best of my knowledge and belief.

Signed Gary Feist Title Division Engineer Date September 6, 1978  
(This space for State Use)

APPROVED BY Carl Whaley TITLE SENIOR AGRICULTURAL GEOLOGIST DATE 9-8-78  
CONDITIONS OF APPROVAL, IF ANY:

NEW MEXICO OIL CONSERVATION COMMISSION  
WELL LOCATION AND ACREAGE DEDICATION PLAT

Form C-102  
Supersedes C-128  
Effective 1-1-65

All distances must be from the outer boundaries of the Section

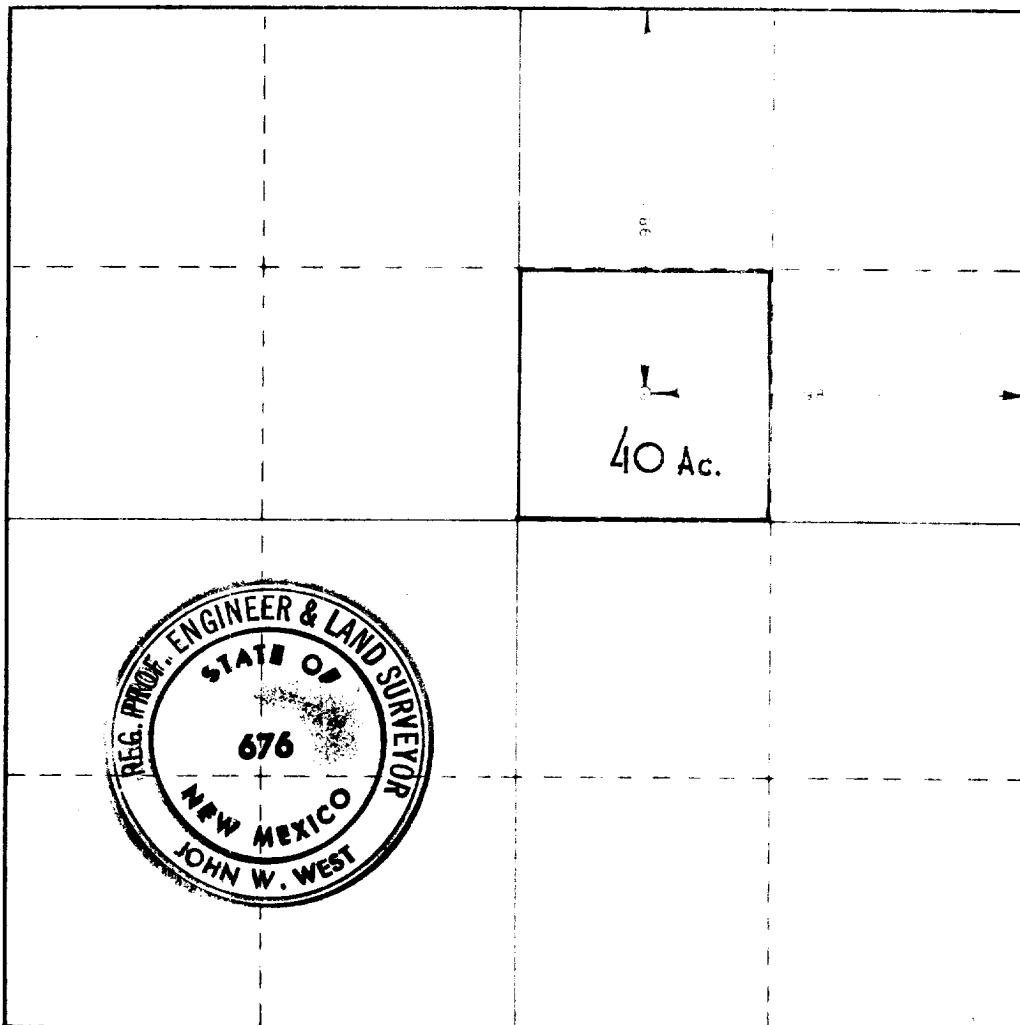
Operator <b>Samedan Oil Corp.</b>			Lease <b>Unit Estate</b>			Well No. <b>1</b>		
Section <b>G</b>	Section <b>15</b>	Township <b>11 North</b>	Range <b>2 East</b>	County <b>Quadalupe</b>				
Actual Footage Location of Well: <b>1980</b> feet from the <b>North</b> line and <b>1280</b> feet from the <b>East</b> line								
Ground Level Elev. <b>4545.0</b>		Producing Formation <b>Santa Rosa</b>			Fluid <b>Wildcat</b>		Dedicated Acreage: <b>40</b>	

1. Outline the acreage dedicated to the subject well by colored pencil or hachure marks on the plat below.
2. If more than one lease is dedicated to the well, outline each and identify the ownership thereof (both as to working interest and royalty).
3. If more than one lease of different ownership is dedicated to the well, have the interests of all owners been consolidated by communitization, unitization, force-pooling, etc?

☐ Yes ☐ No If answer is "yes," type of consolidation \_\_\_\_\_

If answer is "no," list the owners and tract descriptions which have actually been consolidated (Use reverse side of this form if necessary.) \_\_\_\_\_

No allowable will be assigned to the well until all interests have been consolidated (by communitization, unitization, forced-pooling, or otherwise) or until a non-standard unit, eliminating such interests, has been approved by the Commission.



CERTIFICATION

I hereby certify that the information contained herein is true and complete to the best of my knowledge and belief.

*C. Alan Bump*  
Name  
**C. Alan Bump**

Position  
**Div. Clerk**

Company  
**Samedan Oil Corporation**

Date  
**September 6, 1978**

I hereby certify that the well location shown on this plat was plotted from field notes of actual surveys made by me or under my supervision, and that the same is true and correct to the best of my knowledge and belief.

Date Surveyed  
**August 29, 1978**

Registered Professional Engineer and/or Land Surveyor

*John W. West*  
Certificate No. **John W. West 676**

**Ronald J. Eldson 3239**

