

NEW MEXICO OIL CONSERVATION COMMISSION  
WELL LOCATION AND ACREAGE DEDICATION PLAT

Form C-102  
Supersedes C-128  
Effective 1-1-65

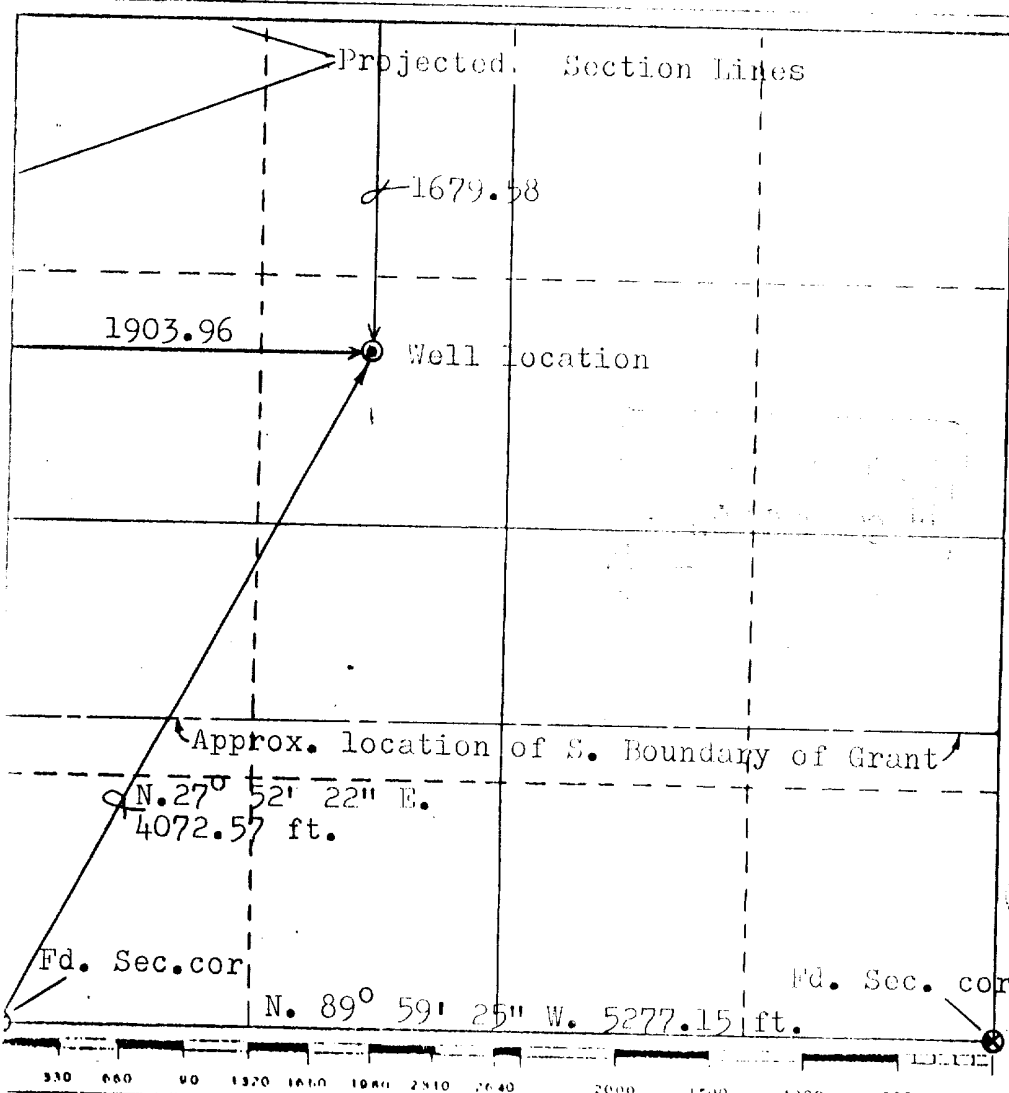
All distances must be from the outer boundaries of the Section

Operator <b>Trans Pecos Resources</b>			Lease <b>Latigo Ranch</b>		Well No. <b>2</b>
Unit Letter <b>Block B</b>	Section <b>6</b>	Township <b>9N</b>	Range <b>24E</b>	County <b>Guadalupe</b>	
Actual Postage Location of Well: <b>1679.58 ft. from projected N. line.) Projected</b> <b>3600.42</b> feet from the <b>South</b> line and <b>1903.96</b> feet from the <b>West</b> line					
Ground Level Elev. <b>4801.3</b>	Producing Formation <b>N/A</b>	Depth <b>N/A</b>	Dedicated Acreage: <b>Acres</b>		

1. Outline the acreage dedicated to the subject well by colored pencil or hatchure marks on the plat below.
2. If more than one lease is dedicated to the well, outline each and identify the ownership thereof (both as to working interest and royalty).
3. If more than one lease of different ownership is dedicated to the well, have the interests of all owners been consolidated by communitization, unitization, force-pooling, etc?  
☐ Yes ☐ No If answer is "yes," type of consolidation \_\_\_\_\_

If answer is "no," list the owners and tract descriptions which have actually been consolidated. (Use reverse side of this form if necessary.) \_\_\_\_\_

No allowable will be assigned to the well until all interests have been consolidated (by communitization, unitization, forced-pooling, or otherwise) or until a non-standard unit, eliminating such interests, has been approved by the Commission.



CERTIFICATION

I hereby certify that the information contained herein is true and complete to the best of my knowledge and belief.

Robert G. McKinney

Name \_\_\_\_\_  
 Position \_\_\_\_\_  
 President  
 Company \_\_\_\_\_  
 Trans Pecos Resources, Inc.  
 Date \_\_\_\_\_  
 10-22-82

I hereby certify that the well location shown on this plat was plotted from field notes of actual surveys made by me or under my supervision, and that the same is true and correct to the best of my knowledge and belief.

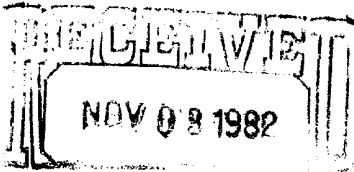
Oct. 20, 21, 22, 1982

Date Surveyed \_\_\_\_\_  
 Registered Professional Engineer and/or Land Surveyor  
 Joe M. Sisneros  
 NM 6847  
 Certificate No. \_\_\_\_\_

COPIES RECEIVED	
DISTRIBUTION	
SANTA FE	
FILE	✓
U.S.G.S.	
LAND OFFICE	
OPERATOR	

NEW MEXICO OIL CONSERVATION COMMISSION

API #  
30-019-20080



Form C-101  
Revised 1-1-65

5A. Indicate Type of Lease  
STATE ☐ FEE ☒  
5. State Oil & Gas Lease No.

APPLICATION FOR PERMIT TO DRILL, DEEPEN, OR PLUG BACK

1a. Type of Work DRILL <input checked="" type="checkbox"/> DEEPEN <input type="checkbox"/> PLUG BACK <input type="checkbox"/>			7. Unit Agreement Name
b. Type of Well OIL <input type="checkbox"/> GAS WELL <input checked="" type="checkbox"/> OTHER Field Extension SINGLE ZONE <input type="checkbox"/> MULTIPLE ZONE <input type="checkbox"/>			8. Farm or Lease Name Latigo Ranch, Blk "B"
c. Name of Operator Trans Pecos Resources, Inc.			9. Well No. 2
3. Address of Operator 800 Gessner, Suite 790 Houston, TX 77024			10. Field and Pool, or Wildcat Nikos V
4. Location of Well UNIT LETTER F LOCATED 1680 FEET FROM THE North LINE AND 1904 FEET FROM THE West LINE OF SEC. 6 TWP. 9N RGE 24E NMPM			12. County Guadalupe
19. Proposed Depth 7250 Ft.			19A. Formation Pennsylvanian
20. Rotary or C.T. Rotary			
21. Elevations (Show whether DF, RT, etc.) 4801 GL	21A. Kind & Status Plug. Bond Multiwell in force	21B. Drilling Contractor Cactus Drilling	22. Approx. Date Work will start 12/1/82

23.

PROPOSED CASING AND CEMENT PROGRAM

SIZE OF HOLE	SIZE OF CASING	WEIGHT PER FOOT	SETTING DEPTH	SACKS OF CEMENT	EST. TOP
17 1/2"	13 3/8"	48#	300ft	350	surface
12 1/4"	8 5/8"	24#	3100ft	450	2000 ft.

1. Drill surface hole to 300 ft. using fresh water mud. Cement surface casing with Class "C" neat cement. Bring cement to surface.
2. Drill intermediate hole to 3100 ft using air/stiff foam drillig fluid. Set 3100 ft intermediate string with Class "C" cement. Bring cement to at least 2000 ft.
3. If a production string is warranted, 5 1/2" casing will be run from surface to T.D.
4. If production is not indicated, hole will be plugged in accordance with State law.

COLLECT AND SACK SAMPLES FOR  
NEW MEXICO BUREAU OF MINES, SOCORRO  
AT AT LEAST TEN FOOT INTERVALS

APPROVAL VALID FOR 90 DAYS  
PERMIT EXPIRES 2/7/83  
UNLESS DRILLING UNDERWAY

IN ABOVE SPACE DESCRIBE PROPOSED PROGRAM: IF PROPOSAL IS TO DEEPEN OR PLUG BACK, GIVE DATA ON PRESENT PRODUCTIVE ZONE AND PROPOSED NEW PRODUCTIVE ZONE. GIVE BLOWOUT PREVENTER PROGRAM, IF ANY.

I hereby certify that the information above is true and complete to the best of my knowledge and belief.

Signed [Signature] Title President Date 10/28/82  
(This space for State Use)

APPROVED BY Carl Ulvog TITLE DISTRICT SUPERVISOR DATE 11/8/82

CONDITIONS OF APPROVAL, IF ANY:

OIL CONSERVATION COMMISSION TO BE NOTIFIED  
WITHIN 24 HOURS OF BEGINNING OPERATIONS