

| | |
|------------------------|---|
| NO. OF COPIES RECEIVED | |
| DISTRIBUTION | |
| SANTA FE | |
| FILE | ✓ |
| U.S.G.S. | |
| LAND OFFICE | |
| OPERATOR | |

NEW MEXICO OIL CONSERVATION COMMISSION

API # 30-021-20031

Form C-101
Revised 1-1-65

| | |
|---|------------------------------|
| 5A. Indicate Type of Lease | |
| STATE <input checked="" type="checkbox"/> | FEE <input type="checkbox"/> |

5. State Oil & Gas Lease No.

L-5821

APPLICATION FOR PERMIT TO DRILL, DEEPEN, OR PLUG BACK

| | | | |
|--|--|---|--|
| 1a. Type of Work | | 7. Unit Agreement Name | |
| b. Type of Well OIL WELL <input type="checkbox"/> GAS WELL <input checked="" type="checkbox"/> <i>CD2</i> OTHER <input type="checkbox"/> | | 8. Farm or Lease Name <i>STATE FM</i> | |
| 2. Name of Operator <i>Amoco Production Company</i> | | 9. Well No. <i>1</i> | |
| 3. Address of Operator <i>BOX 68, HOBBS, N. M. 88240</i> | | 10. Field and Pool, or Wildcat <i>WILDCAT</i> | |
| 4. Location of Well UNIT LETTER <i>G</i> LOCATED <i>1980</i> FEET FROM THE <i>NORTH</i> LINE AND <i>1980</i> FEET FROM THE <i>EAST</i> LINE OF SEC. <i>36</i> TWP. <i>19-N</i> RGE. <i>30-E</i> NMPM | | 12. County <i>HARDING</i> | |
| 19. Proposed Depth <i>2700'</i> | | 19A. Formation <i>BASEMENT</i> | |
| 20. Rotary or C.T. <i>ROTARY</i> | | 21. Elevations (Show whether DF, RT, etc.) <i>4519.8</i> | |
| 21A. Kind & Status Plug. Bond <i>BLANKET- ON FILE</i> | | 21B. Drilling Contractor <i>ARTEC WELL SERV. CO.</i> | |
| 22. Approx. Date Work will start <i>8-74</i> | | | |

PROPOSED CASING AND CEMENT PROGRAM

| SIZE OF HOLE | SIZE OF CASING | WEIGHT PER FOOT | SETTING DEPTH | SACKS OF CEMENT | EST. TOP |
|---------------------|----------------|-----------------|---------------|--------------------------|----------|
| <i>12 1/4 - 11"</i> | <i>8 5/8"</i> | <i>24 #</i> | <i>300'</i> | <i>SUFF TO CIRC</i> | |
| <i>7 7/8"</i> | <i>4 1/2"</i> | <i>9.5 #</i> | <i>2700'</i> | <i>FILL BACK TO 300'</i> | |

APPROVAL VALID
FOR 90 DAYS UNLESS
DRILLING COMMENCED,
EXPIRES *9/9/74*

IN ABOVE SPACE DESCRIBE PROPOSED PROGRAM; IF PROPOSAL IS TO DEEPEN OR PLUG BACK, GIVE DATA ON PRESENT PRODUCTIVE ZONE AND PROPOSED NEW PRODUCTIVE ZONE. GIVE BLOWOUT PREVENTER PROGRAM, IF ANY.

I hereby certify that the information above is true and complete to the best of my knowledge and belief.

Signed *James E. York* Title *AREA ENGINEER* Date *MAY 29 1974*

(This space for State Use)

014-NMOC-9F
ATT: CARL ULVOG
APPROVED BY *Carl Ulvog*
1-DIV
CONDITIONS OF APPROVAL, IF ANY:
1-300P
1-R24

SENIOR PETROLEUM GEOLOGIST

DATE *6/10/74*

COLLECT AND SACK SAMPLES FOR
NEW MEXICO OIL CONSERVATION COMMISSION
AT THE ABOVE LOCATION

**NEW MEXICO OIL CONSERVATION COMMISSION
WELL LOCATION AND ACREAGE DEDICATION PLAT**

Form C-102
Supersedes C-128
Effective 1-1-65

All distances must be from the outer boundaries of the Section.

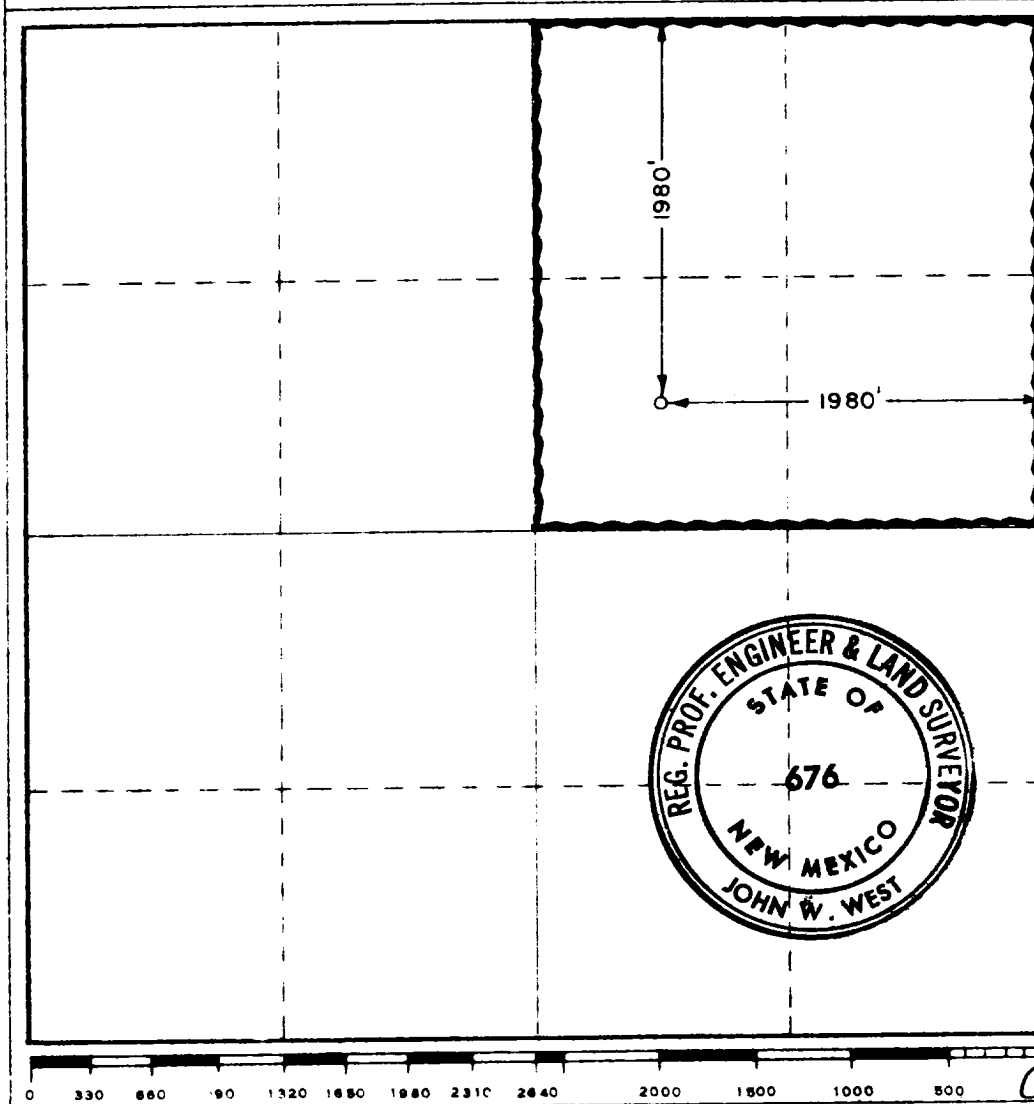
| | | | | | |
|--|--|-----------------------------|--------------------------|--|----------------------|
| Operator AMOCO PRODUCTION COMPANY | | | Lease STATE FM | | Well No. 1 |
| Unit Letter G | Section 36 | Township 19 NORTH | Range 30 EAST | County HARDING | |
| Actual Footage Location of Well: 1980 feet from the NORTH line and 1980 feet from the EAST line | | | | | |
| Ground Level Elev. 4519.8 | Producing Formation BASEMENT | | Pool WILDCAT | Dedicated Acreage: 160 Acres | |

1. Outline the acreage dedicated to the subject well by colored pencil or hatchure marks on the plat below.
2. If more than one lease is dedicated to the well, outline each and identify the ownership thereof (both as to working interest and royalty).
3. If more than one lease of different ownership is dedicated to the well, have the interests of all owners been consolidated by communitization, unitization, force-pooling, etc?

☐ Yes ☐ No If answer is "yes," type of consolidation _____

If answer is "no," list the owners and tract descriptions which have actually been consolidated (Use reverse side of this form if necessary.) _____

No allowable will be assigned to the well until all interests have been consolidated (by communitization, unitization, forced-pooling, or otherwise) or until a non-standard unit, eliminating such interests, has been approved by the Commission.



CERTIFICATION

I hereby certify that the information contained herein is true and complete to the best of my knowledge and belief.

Name James E. York
Position
AREA ENGINEER

Company
Amoco Production Company

MAY 29 1974

I hereby certify that the well location shown on this plat was plotted from field notes of actual surveys made by me or under my supervision, and that the same is true and correct to the best of my knowledge and belief.

Date Surveyed:

APRIL 3, 1974

Registered Professional Engineer
and/or Land Surveyor

John W. West
Certificate No.

676