

**NEW MEXICO OIL CONSERVATION COMMISSION
WELL LOCATION AND ACREAGE DEDICATION PLAT**

Form C-102
Supersedes C-128
Effective 1-1-65

All distances must be from the outer boundaries of the Section

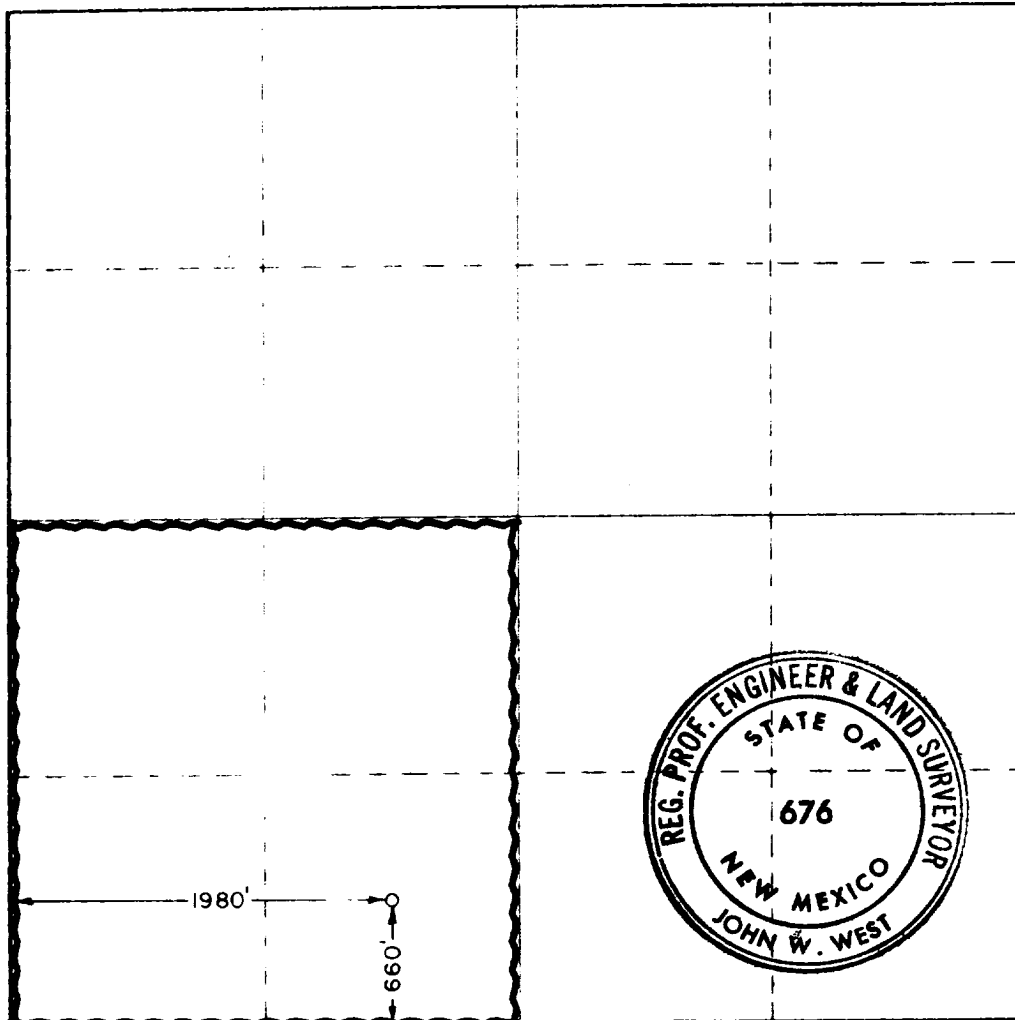
Operator AMOCO PRODUCTION COMPANY			Lease STATE FN		Well No. 1
Section N	Section 11	Township 19 NORTH	Range 29 EAST	County HARDING	
Actual well location of Well: <div style="display: flex; justify-content: space-between;"> 1980 feet from the WEST line and 660 feet from the SOUTH line </div>					
Ground level Elev 4565.7	Producing Formation BASEMENT	Pool WILDCAT	Dedicated Acreage: 160 Acres		

- 1 Outline the acreage dedicated to the subject well by colored pencil or hatchure marks on the plat below.
- 2 If more than one lease is dedicated to the well, outline each and identify the ownership thereof (both as to working interest and royalty).
- 3 If more than one lease of different ownership is dedicated to the well, have the interests of all owners been consolidated by communitization, unitization, force-pooling, etc?

☐ Yes ☐ No If answer is "yes," type of consolidation _____

If answer is "no," list the owners and tract descriptions which have actually been consolidated. (Use reverse side of this form if necessary) _____

No allowable will be assigned to the well until all interests have been consolidated (by communitization, unitization, forced-pooling, or otherwise) or until a non-standard unit, eliminating such interests, has been approved by the Commission.



CERTIFICATION

I hereby certify that the information contained herein is true and complete to the best of my knowledge and belief.

James E. York
Signature

AREA ENGINEER

Company
Amoco Production Company

Date
MAY 29 1974

I hereby certify that the well location shown on this plat was plotted from field notes of actual surveys made by me or under my supervision, and that the same is true and correct to the best of my knowledge and belief.

Date Surveyed

MARCH 30, 1974

Registered Professional Engineer
and/or Land Surveyor

John W. West
Signature

Certificate No. **676**

