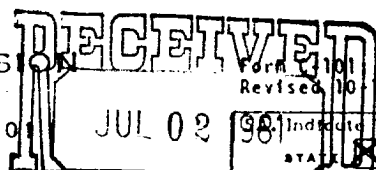


STATE OF NEW MEXICO
ENERGY AND MINERALS DEPARTMENT

OIL CONSERVATION DIVISION

P. O. BOX 2088

SANTA FE, NEW MEXICO 87501



Form 8101
Revised 10-1-78

Indicate Type of Lease

STATE ☒ FEE ☐

State Oil & Gas Lease No.

OIL CONSERVATION DIVISION
SANTA FE

NO. OF COPIES RECEIVED	
DISTRIBUTION	
SANTA FE	<input checked="" type="checkbox"/>
FILE	<input checked="" type="checkbox"/>
U.S.G.S.	
LAND OFFICE	
OPERATOR	

API # 30-021-20150

APPLICATION FOR PERMIT TO DRILL, DEEPEN, OR PLUG BACK

1a. Type of Work

DRILL ☒

DEEPEN ☐

PLUG BACK ☐

b. Type of Well

OIL WELL ☐

GAS WELL ☒ CO2 OTHER

SINGLE ZONE ☒

MULTIPLE ZONE ☐

2. Name of Operator

Amoco Production Company

3. Address of Operator

P. O. Box 68 Hobbs, NM 88240

4. Location of Well

UNIT LETTER G LOCATED 1650 FEET FROM THE North LINE

AND 1650 FEET FROM THE East LINE OF SEC. 35 TWP. 18-N RGE. 33-E NMPM

7. Unit Agreement Name

BDCDGU

8. Farm or Lease Name

BDCDGU 1833

9. Well No.

351

10. Field and Pool, or Wildcat

Und. Tubb

12. County

Harding

19. Proposed Depth

3040'

19A. Formation

Tubb

20. Rotary or C.T.

Rotary

21. Elevations (Show whether DF, RT, etc.)

4765' GL

21A. Kind & Status Plug. Bond

Blanket-on-file

21B. Drilling Contractor

NA

22. Approx. Date Work will start

7-13-81

23.

PROPOSED CASING AND CEMENT PROGRAM

SIZE OF HOLE	SIZE OF CASING	WEIGHT PER FOOT	SETTING DEPTH	SACKS OF CEMENT	EST. TOP
12-1/4"	8-5/8"	24#	700'	Circ.	Surface
7-7/8"	5-1/2"	14#	3040'	Tie back to 8-5/8"	BTM 8-5/8"

Propose to drill and equip well in the Tubb formation. After reaching TD logs will be run and evaluated. Perforate and stimulate as necessary in attempting commercial production.

MUD PROGRAM: 0'-700' Native mud and fresh water
700'-TD Commercial mud and brine with minimum properties for safe hole conditions.

BOP Program Attached.
Gas is not dedicated.

**OIL CONSERVATION COMMISSION TO BE NOTIFIED
WITHIN 24 HOURS OF BEGINNING OPERATIONS**

0+2-NMOCD, SF 1-Hou 1-Susp 1-MKE 1-Amerada 1-UGI 1-Cities Svc.
1-Conoco 1-CO2 in Action 1-Excelsior 1-Sun Tex.

IN ABOVE SPACE DESCRIBE PROPOSED PROGRAM; IF PROPOSAL IS TO DEEPEN OR PLUG BACK, GIVE DATA ON PRESENT PRODUCTIVE ZONE AND PROPOSED NEW PRODUCTIVE ZONE. GIVE BLOWOUT PREVENTER PROGRAM, IF ANY.

I hereby certify that the information above is true and complete to the best of my knowledge and belief.

Signed [Signature] Title Admin. Analyst Date 6-30-81

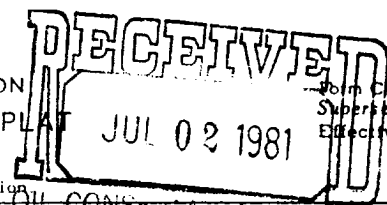
(This space for State Use)

APPROVED BY Carl Ulvog TITLE SENIOR PETROLEUM GEOLOGIST DATE 7-2-81

CONDITIONS OF APPROVAL, IF ANY:

APPROVAL VALID FOR 180 DAYS
PERMIT EXPIRES 12-29-81
UNLESS DRILLING UNDERWAY

NEW MEXICO OIL CONSERVATION COMMISSION
WELL LOCATION AND ACREAGE DEDICATION PLAT



Form C-102
Supersedes C-128
Effective 1-1-65

All distances must be from the outer boundaries of the Section

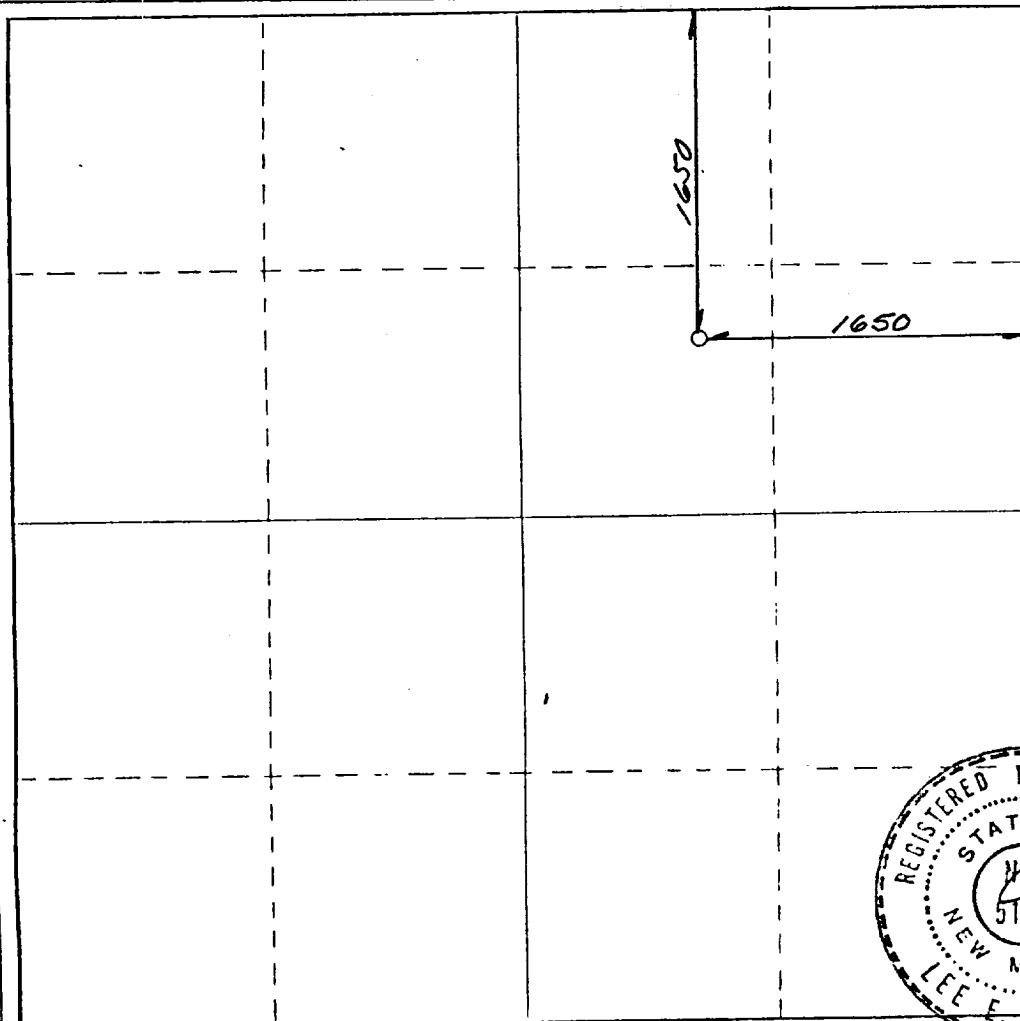
Operator AMOCO PRODUCTION COMPANY			Lease Bravo Dome CO2 Gas Unit		
Unit Letter G	Section 35	Township T18N	Range R33E	County HARDING	
Actual Footage Location of Well: 1650 feet from the NORTH line and 1650 feet from the EAST line					
Ground Level Elev. 4765	Producing Formation Tubb		Pool Und. Tubb		Dedicated Acreage: 160 Acres

- Outline the acreage dedicated to the subject well by colored pencil or hachure marks on the plat below.
- If more than one lease is dedicated to the well, outline each and identify the ownership thereof (both as to working interest and royalty).
- If more than one lease of different ownership is dedicated to the well, have the interests of all owners been consolidated by communitization, unitization, force-pooling, etc?

☒ Yes ☐ No If answer is "yes," type of consolidation _____

If answer is "no," list the owners and tract descriptions which have actually been consolidated. (Use reverse side of this form if necessary.) _____

No allowable will be assigned to the well until all interests have been consolidated (by communitization, unitization, forced-pooling, or otherwise) or until a non-standard unit, eliminating such interests, has been approved by the Commission.



CERTIFICATION

I hereby certify that the information contained herein is true and complete to the best of my knowledge and belief.

Name

Admin. Analyst

Position

Amoco Production Company

Company

6-30-81

Date

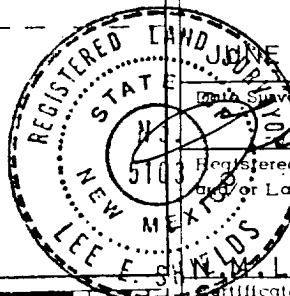
I hereby certify that the well location shown on this plat was plotted from field notes of actual surveys made by me or under my supervision, and that the same is true and correct to the best of my knowledge and belief.

JUNE 24, 1981

Emph. Surveyed

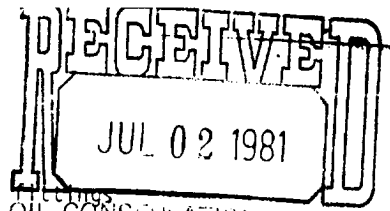
Lee E. Shields
Registered Professional Engineer
and/or Land Surveyor

L.S. NO. 5103
Certificate No.



0 330 660 990 1320 1650 1980 2310 2640 2000 1500 1000 500 0

ATTACHMENT "B"
NOTES



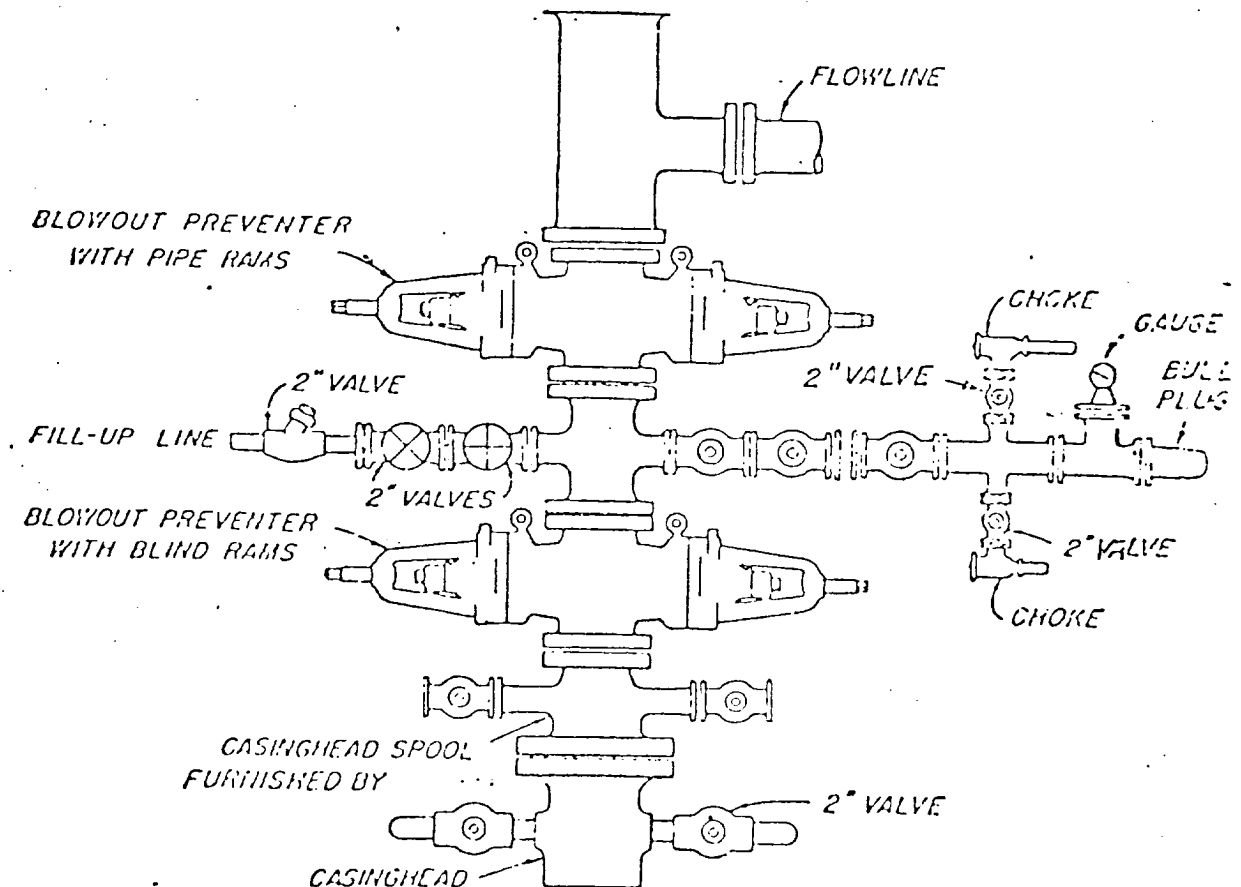
1. Blow-out preventers and master valve to be fluid operated and oil fittings must be in good condition, 3,000# W.P. (6,000 p.s.i. test), minimum.
2. Equipment through which bit must pass shall be as large as the inside diameter of the casing that is being drilled through.
3. Nipple above blow-out preventer shall be same size as casing being drilled through.
4. Kelly cock required, 3,000# W.P. (6,000 p.s.i. test) minimum.
5. OMSCO or comparable safety valve must be available on rig floor at all times with proper connection or sub, 3,000# W.P. (6,000 p.s.i. test), minimum.
6. Blow-out preventers and master valve while drilling intermediate hole to 6000' may be 2,000# W.P. (4,000 p.s.i. test), minimum.
7. Choke assembly, beyond second valve from cross, may be positioned (Optional) outside of derrick foundation.
8. Spool or cross may be eliminated if connections are available in the lower part of the blow-out preventer body.
9. Plug valves - gate valves are optional. Valves shown as 2" are minimum size.
10. Casing head and casing head spool, including attached valves, to be furnished by Amoco.
11. Rams in preventers will be installed as follows:

When drilling, use:

Top Preventer - Drill pipe rams
Bottom Preventer - Blind rams or master valve

When running casing, use:

Top Preventer - Casing rams
Bottom Preventer - Blind rams or master valve



BLOWOUT PREVENTER HOOK-UP

AMOCO FIELD SERVICE COMPANY

EXHIBIT D-1 MODIFIED

JUNE 1, 1962