

STATE OF NEW MEXICO
ENERGY AND MINERALS DEPARTMENT

OIL CONSERVATION DIVISION

Form C-101
Revised 10-1-78

NO. OF COPIES RECEIVED	
DISTRIBUTION	
SANTA FE	
FILE	<input checked="" type="checkbox"/>
U.S.G.S.	
LAND OFFICE	
OPERATOR	

P. O. BOX 2088
SANTA FE, NEW MEXICO 87501

API # 30-021-20207

5A. Indicate Type of Lease
STATE ☒ FEDERAL ☐
5. State Oil & Gas Lease No.

APPLICATION FOR PERMIT TO DRILL, DEEPEN, OR PLUG BACK

1a. Type of Work DRILL <input checked="" type="checkbox"/> DEEPEN <input type="checkbox"/> PLUG BACK <input type="checkbox"/>		7. Well Name Bravo Dome Carbon Dioxide Gas Unit	
b. Type of Well OIL WELL <input type="checkbox"/> GAS WELL <input checked="" type="checkbox"/> OTHER <input type="checkbox"/> C02		8. Form or Lease Name Bravo Dome Carbon Dioxide Gas Unit	
2. Name of Operator Amoco Production Company		9. Well No. 1731 161G	
3. Address of Operator P.O. Box 606, Clayton, New Mexico 88415		10. Field and Pool, or Wildcat Bravo Dome Carbon Dioxide Gas Unit 160-Acre Area	
4. Location of Well UNIT LETTER G LOCATED 1650 FEET FROM THE North LINE AND 1650 FEET FROM THE East LINE OF SEC. 16 TWP. 17N RGE. 31E NMPM		12. County Harding	
19. Proposed Depth 2900'		19A. Formation Tubb	
20. Rotary or C.T. Rotary			
21. Elevations (Show whether DF, RI, etc.) 4330' GL		21A. Kind & Status Plug. Bond Blanket-on-file	
21B. Drilling Contractor N/A		22. Approx. Date Work will start September, 1984	

PROPOSED CASING AND CEMENT PROGRAM

SIZE OF HOLE	SIZE OF CASING	WEIGHT PER FOOT	SETTING DEPTH	SACKS OF CEMENT	EST. TOP
12-1/4"	9-5/8"	32.30#	700'	circulate	surface
8-3/4"	7"	15, 20#	2900'	Tieback to 9-5/8"	surface

Propose to drill and equip well in the Tubb formation. After reaching TD logs will be run and evaluated. Perforate and stimulate as necessary in attempting commercial production.

Mud Program: 0 - 700' Native Spud Mud
700 - TD KCL Salt Water Gel-Starch

BOP Diagram attached.

APPROVAL VALID FOR 180 DAYS
PERMIT EXPIRES 5-26-85
UNLESS DRILLING UNDERWAY

0+5-NMOCD,SF 1-J.R.Barnett,HOU Rm 21.156 1-F.J.Nash,HOU Rm.4.206 1-WF,C 1-WF,H 1-Susp
1-JSM 1-Amerada 1-Amerigas 1-Cities Service 1-Conoco 1-C02 in Action 1-Sun
1-Excelsior 1-Tex 1-Exxon

4. ABOVE SPACE DESCRIBE PROPOSED PROGRAM; IF PROPOSAL IS TO DEEPEN OR PLUG BACK, GIVE DATA ON PRESENT PRODUCTIVE ZONE AND PROPOSED NEW PRODUCTIVE ZONE. GIVE BLOWOUT PREVENTER PROGRAM, IF ANY.

hereby certify that the information above is true and complete to the best of my knowledge and belief.

igned John S. McElya Title Asst. Adm. Analyst Date 9-21-84

(This space for State Use)

APPROVED BY [Signature] TITLE DISTRICT SUPERVISOR DATE 9-27-84

CONDITIONS OF APPROVAL, IF ANY:

NEW MEXICO OIL CONSERVATION COMMISSION
WELL LOCATION AND ACREAGE DEDICATION PLAT

Form C-102
Supersedes C-128
Effective 1-1-61

All distances must be from the outer boundaries of the Section.

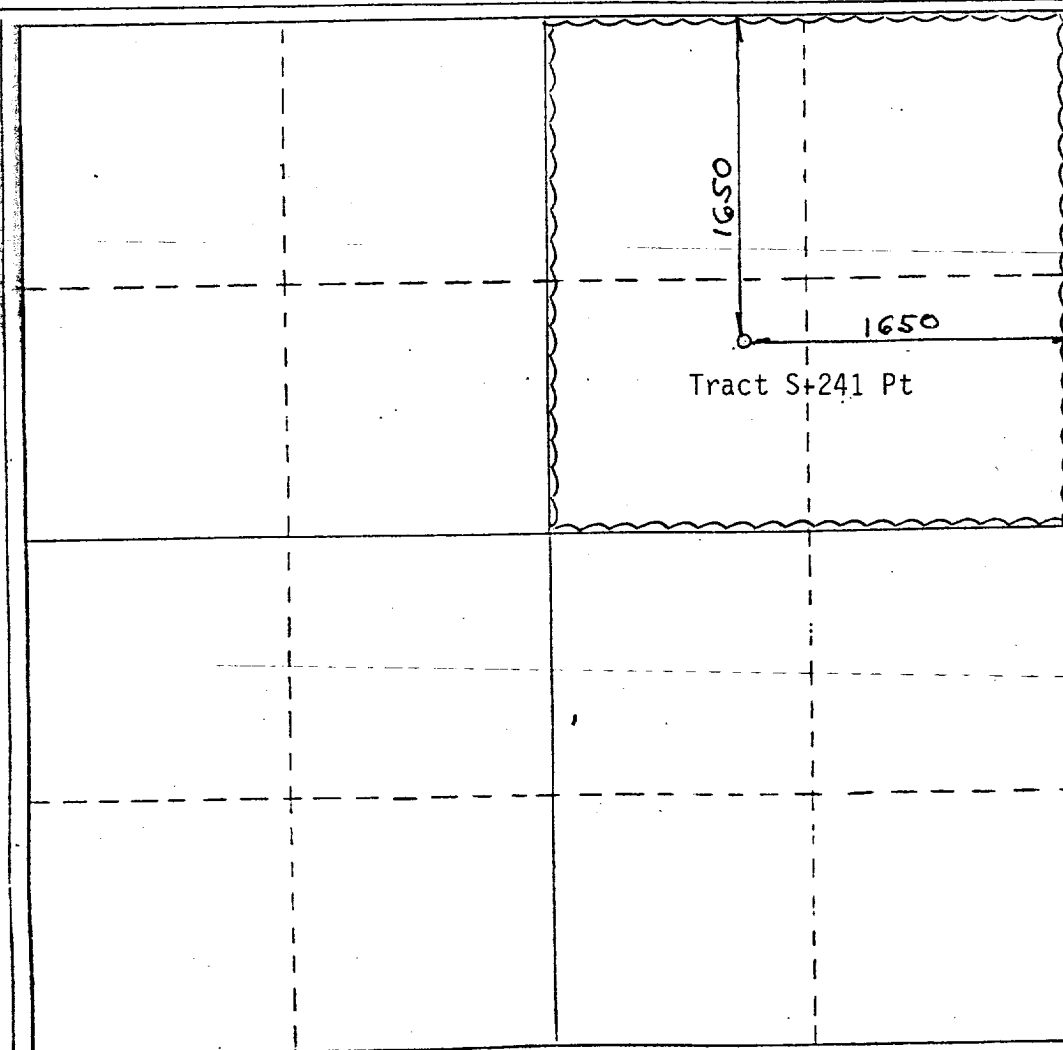
Operator AMOCO PRODUCTION COMPANY		Lease Bravo Dome Carbon Dioxide Gas Unit		Well No. 1731 161G
Unit Letter G	Section 16	Township T17N	Range R31E	County HARDING
Actual Footage Location of Well:				
1650 feet from the NORTH line and		1650 feet from the EAST line		
Ground Level Elev. 4330	Producing Formation Tubb	Pool Bravo Dome 160 Acre Area	Dedicated Acreage: 160 Acres	

1. Outline the acreage dedicated to the subject well by colored pencil or hachure marks on the plat below.
2. If more than one lease is dedicated to the well, outline each and identify the ownership thereof (both as to working interest and royalty).
3. If more than one lease of different ownership is dedicated to the well, have the interests of all owners been consolidated by communitization, unitization, force-pooling, etc?

☒ Yes ☐ No If answer is "yes," type of consolidation Unitization

If answer is "no," list the owners and tract descriptions which have actually been consolidated. (Use reverse side of this form if necessary.)

No allowable will be assigned to the well until all interests have been consolidated (by communitization, unitization, forced-pooling, or otherwise) or until a non-standard unit, eliminating such interests, has been approved by the Commission.

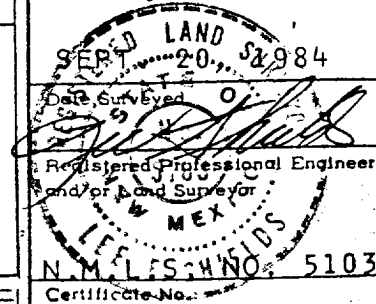


CERTIFICATION

I hereby certify that the information contained herein is true and complete to the best of my knowledge and belief.

Name John S. McElroy
Position Asst. Admin. Analyst
Company Amoco Production Company
Date 9-21-84

I hereby certify that the well location shown on this plat was plotted from field notes of actual surveys made by me or under my supervision, and that the same is true and correct to the best of my knowledge and belief.



Certificate No.

STANDARD 2000 PSI W.P. 60P STACK

1. Blow-out preventers may be manually operated.
 2. All equipment must be in good condition, 2,000 psi W.P. (4,000 psi test) minimum.
 3. Bell nipple above blow-out preventer shall be same size as casing being drilled through.
 4. Kelly cock to be installed on kelly.
 5. Full opening safety valve 2,000 psi w.p. (4,000 psi test) minimum must be available on rig floor at all times with proper connection or subs to fit any tool joint in string.
 6. Spool or cross may be eliminated if connections are available in the lower part of the blow-out preventer body.
 7. Double or space saver type preventers may be used in lieu of two single preventers.
 8. 60P rams to be installed as follows:
 - Top preventer - Drill pipe or casing rams
 - Bottom preventer - Blind rams
- *Amoco District Superintendent may reverse location of rams.
9. Extensions and hand wheels to be installed and braced at all times.
 10. Manifold valves may be gate or plug metal to metal seal 2" minimum.

