

OIL CONSERVATION DIVISION

P. O. BOX 2088

SANTA FE, NEW MEXICO 87501

Form C-101
Revised 10-1-78

NO. OF COPIES RECEIVED	
DISTRIBUTION	
SANTA FE	1
FILE	1
U.S.G.S.	2
LAND OFFICE	1
OPERATOR	1

API # 30-021-20209

5A. Indicate Type of Lease
STATE <input checked="" type="checkbox"/> FREE <input type="checkbox"/>
5. State Oil & Gas Lease No.

APPLICATION FOR PERMIT TO DRILL, DEEPEN, OR PLUG BACK

1a. Type of Work		7. Unit Agreement Name	
b. Type of Well OIL WELL <input type="checkbox"/> GAS WELL <input checked="" type="checkbox"/> CO2 <input type="checkbox"/> OTHER <input type="checkbox"/>		BDCDGU	
2. Name of Operator		8. Farm or Lease Name	
Amoco Production Company		BDCDGU	
3. Address of Operator		9. Well No.	
P. O. Box 606, Clayton, New Mexico 88415		2129 351J	
4. Location of Well		10. Field and Pool, or Wildcat	
UNIT LETTER J LOCATED 1830 FEET FROM THE South LINE		BDCDGU 640-Acre Area	
AND 1830 FEET FROM THE East LINE OF SEC. 35 TWP. 21-N R. 29-E			
		12. County	
		Harding	
19. Proposed Depth		15A. Formation	20. Rotary or C.T.
2900'		Tubb	Rotary
21A. Kind & Status Plug. Bond		21B. Drilling Contractor	22. Approx. Date Work will start
Blanket-on-file		N/A	August, 1984
21. Elevations (show whether Dr., h.l., etc.)			
5409' GL			

PROPOSED CASING AND CEMENT PROGRAM

SIZE OF HOLE	SIZE OF CASING	WEIGHT PER FOOT	SETTING DEPTH	SACKS OF CEMENT	EST. TOP
12-1/4"	9-5/8"	32.30#	700'	Circulate	surface
8-3/4"	7"	15, 20#	2900'	Tieback to 9-5/8"	surface

Propose to drill and equip well in the Tubb formation. After reaching TD logs will be run and evaluated. Perforate and stimulate as necessary in attempting commercial production.

Mud Program: 0 - 700' Native Spud Mud
700 - TD KCL Salt Water Gel-Starch

BOP Diagram attached.

APPROVED BY [Signature] 180 DAYS
PERMIT NO. 4-3-85
OIL CONSERVATION DIVISION
SANTA FE

O+5-NMOCD, SF 1-J. R. Barnettt, HOU Rm. 21.156 1-F. J. Nash, HOU Rm. 4.206 1-WF, C 1-WF,
1-Susp, 1-JSM, 1-Amerada 1-Amerigas 1-Cities Service 1-Conoco 1-CO2 in Action 1-Sun
1-Excelsior 1-Tex 1-Exxon

4. ABOVE SPACE DESCRIBE PROPOSED PROGRAM IF PROPOSAL IS TO DEEPEN OR PLUG BACK, GIVE DATA ON PRESENT PRODUCTIVE ZONE AND PROPOSED NEW PRO-
DUCIVE ZONE. GIVE BLOWOUT PREVENTER PROGRAM, IF ANY.

hereby certify that the information above is true and complete to the best of my knowledge and belief.

Signed John S. McElyea Title Assist. Admin. Analyst Date 10-3-84
(This space for State Use)

APPROVED BY David L. Catano TITLE CL AND CASING DATE 10-5-84
CONDITIONS OF APPROVAL, IF ANY:

NEW MEXICO OIL CONSERVATION COMMISSION
WELL LOCATION AND ACREAGE DEDICATION PLAT

Form C-102
Supersedes C-128
Effective 1-1-65

All distances must be from the outer boundaries of the Section

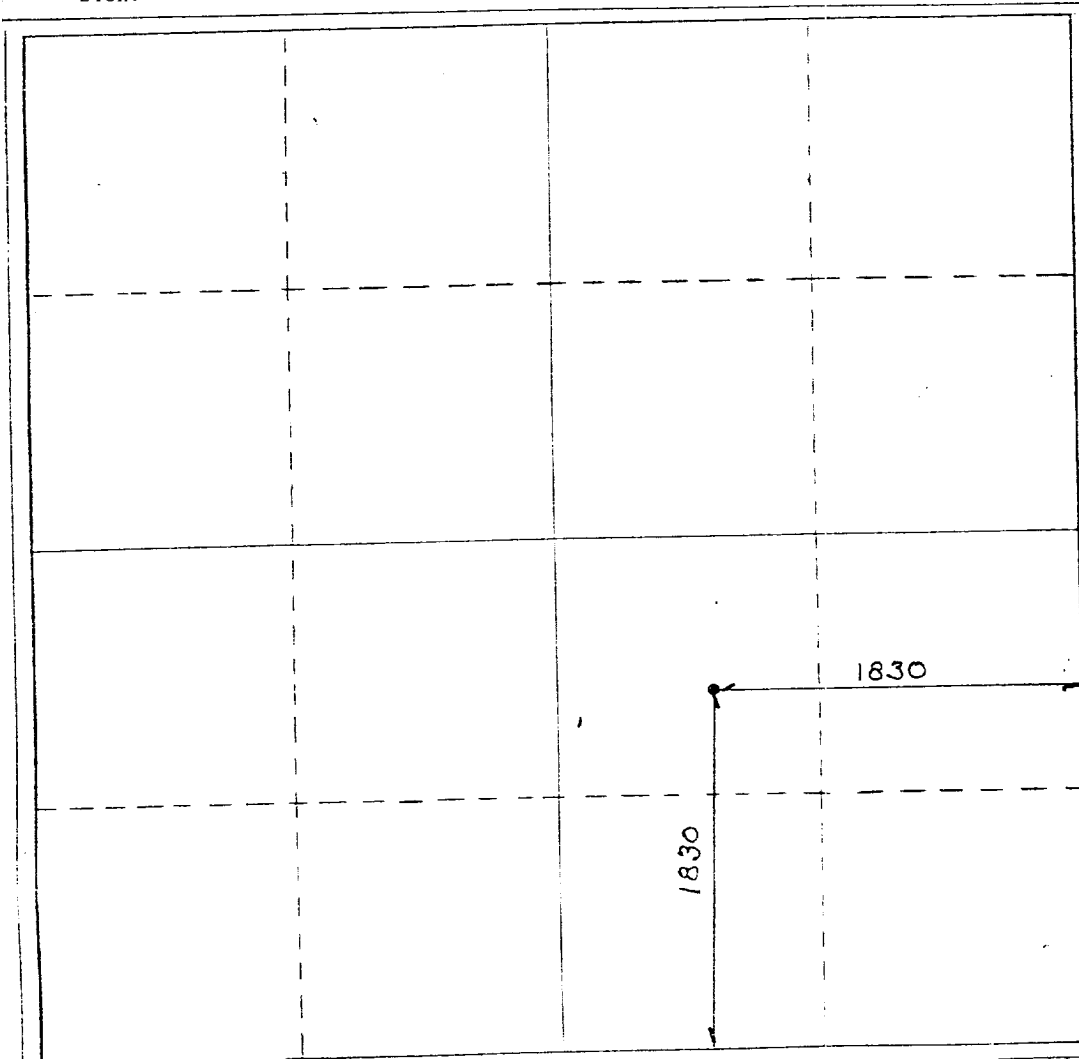
Operator AMOCO PRODUCTION COMPANY		Lease BRAVO DOME CARBON DIOXIDE GAS UNIT		Well No. 2129 351J
Unit Letter J	Section 35	Township T21N	Range R 29E	County HARDING
Actual Footage Location of Well: 1830 feet from the SOUTH line and 1830 feet from the EAST line				
Ground Level Elev. 5409	Producing Formation TUBB	Pool BRAVO DOME 640-Acre Area		Dedicated Acreage: 640 Acres

1. Outline the acreage dedicated to the subject well by colored pencil or hachure marks on the plat below.
2. If more than one lease is dedicated to the well, outline each and identify the ownership thereof (both as to working interest and royalty).
3. If more than one lease of different ownership is dedicated to the well, have the interests of all owners been consolidated by communitization, unitization, force-pooling, etc?

☒ Yes ☐ No If answer is "yes" type of consolidation Unitization

If answer is "no," list the owners and tract descriptions which have actually been consolidated. (Use reverse side of this form if necessary.)

No allowable will be assigned to the well until all interests have been consolidated (by communitization, unitization, forced-pooling, or otherwise) or until a non-standard unit, eliminating such interests, has been approved by the Commission.



CERTIFICATION

I hereby certify that the information contained herein is true and complete to the best of my knowledge and belief.

Name John S McEllya
Position Asst. Adm. Analyst
Company Amoco Production Company
Date 10-3-84

I hereby certify that the well location shown on this plat was plotted from field notes of actual surveys made by me or under my supervision, and that the same is true and correct to the best of my knowledge and belief.

Date 10-3-84
Registered Professional Engineer
and/or Land Surveyor
N.M. L.S. NO. 5203
Certificate No. 5203

STANDARD 2000 PSI W.P. BOP STACK

1. Blow-out preventers may be manually operated.
2. All equipment must be in good condition, 2,000 psi W.P. (4,000 psi test) minimum.
3. Bell nipple above blow-out preventer shall be same size as casing being drilled through.
4. Kelly cock to be installed on kelly.
5. Full opening safety valve 2,000 psi w.p. (4,000 psi test) minimum must be available on rig floor at all times with proper connection or subs to fit any tool joint in string.
6. Spool or cross may be eliminated if connections are available in the lower part of the blow-out preventer body.
7. Double or space saver type preventers may be used in lieu of two single preventers.
8. BOP rams to be installed as follows:
 - Top preventer - Drill pipe or casing rams
 - Bottom preventer - Blind rams

*Anoco District Superintendent may reverse location of rams.
9. Extensions and hand wheels to be installed and braced at all times.
10. Manifold valves may be gate or plug metal to metal seal 2" minimum.

