

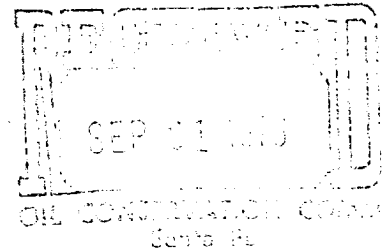
G. E. HATTON, GEOLOGIST

TELEPHONE 806 373-8914

1000A FISK BUILDING

AMARILLO, TEXAS

79101



September 19, 1973

Mr. J. E. Kapteina P. E.
Oil Conservation Commission
State of New Mexico
P. O. Box 2088
Santa Fe, New Mexico 87501

Re: Plugging, Powers & Powers
wells, Quay County, N. M.

Form C-103

Dear Sir:

Request is made for the plugging of the following wells:

1612
Powers & Powers, State #1, 1980' FS & EL Sec. 28-T15N-R34E, Quay County.
Total Depth 2540' Plugged Back Total Depth 2005'
Casing: 8 5/8" at 340' Cemented to surface.
4 1/2" at 2237' Cemented with 125 Sx cement.

31 2000
Perf. 1794-95. Squeezed with 50 sacks)
Perf. 1657-59. Squeezed with 200 sacks) Pressure 1500psi

Perf. 1805-17 and 1894-1927
Acid/1000 gals. 15% acid. No recovery. It is presumed these perforations
are open.
Well didnot produce and has been shut in.
#

Powers & Powers, State #2, Approx. Center NE/4, Sec. 28-T15N-R34E, Quay County.

Total Depth 2678'
Casing: 7" at 758 Cemented to surface.
4 1/2" at 2204' Cemented with 150 sacks.

Perf. 2142-52. Acid/300 gals. 20% acid. Recovered salt water.
Set Cast Iron Plug at 2134'

Perf. 2112-22. Acid 350 Gals. 20% acid. Recovered salt water.
Set Cast Iron Plug at 2100'

Perf. 2062-68. Acid 350 gals 20% acid. No fluid recovered.

Shot off casing at 1650' and pulled. Cleaned out hole to 1154'
Drove plug to 1161' Ran 4 1/2" casing to 1158' and cemented with 90 sacks.

Perf. 1148-53. Acid/250 gals. 15% acid. Recovered no fluid.
Perf. 1116-24. Acid/ 250 gals. 15% acid. Recovered no fluid.

2 cement 900'
Set Cast Iron Plug at 1130' Perf. 1062-66. Acid/250 gals. 15% acid.
Recovered no fluid.

Drill CIBP
2 775' 1130'
Set Cast Iron Plug at 975' Perf. 952-62. Acid/250 gals. 15% acid.
Recovered no fluid. Well shut in.

Very truly yours,
G. E. Hatton
G. E. Hatton