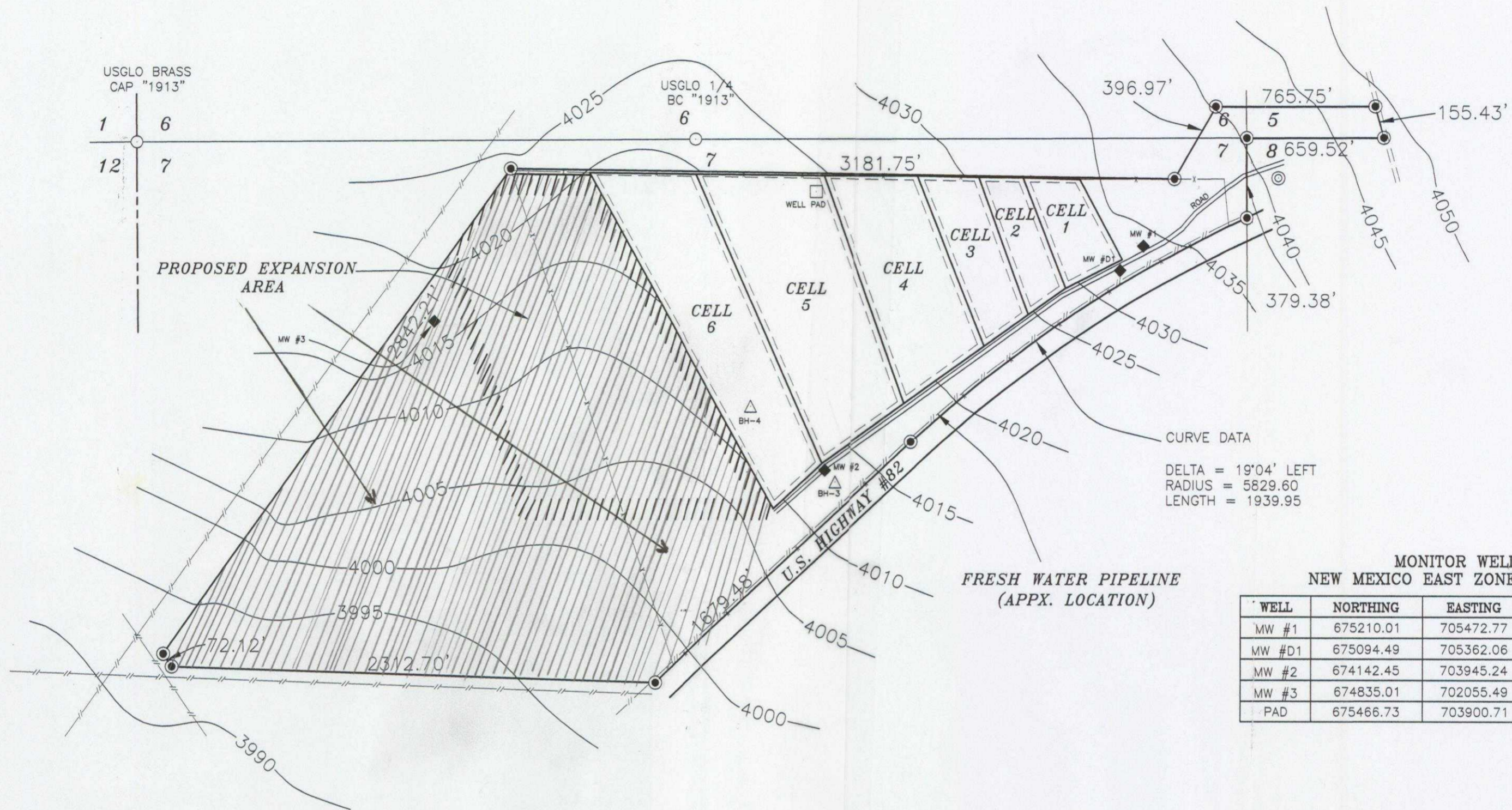


TOPOGRAPHIC SURVEY OF ARTESIA AERATION LLC LAND FARM IN
SECTIONS 5, 6, & 7, TOWNSHIP 17 SOUTH, RANGE 32 EAST, N.M.P.M.,
LEA COUNTY, NEW MEXICO



MONITOR WELLS
NEW MEXICO EAST ZONE - NAD 83

WELL	NORTHING	EASTING	ELEVATION TOP OF CASING	GROUND ELEVATION
MW #1	675210.01	705472.77	4036.21'	4032.91'
MW #D1	675094.49	705362.06	4037.08'	4032.40'
MW #2	674142.45	703945.24	4015.60'	4012.42'
MW #3	674835.01	702055.49	-	-
PAD	675466.73	703900.71	-	4028.37'

NOTES:
HORIZONTAL COORDINATES WERE ESTABLISHED BY USING GPS (GLOBAL POSITIONING SYSTEM). AND ARE NEW MEXICO EAST ZONE, NAD 83, U.S. SURVEY FEET VALUES.

ELEVATIONS WERE ESTABLISHED BY CONVENTIONAL LEVELING BASED OFF MONUMENT "WILSON", ELEVATION OF 4042.99' (NAVD 88).



SURVEYORS CERTIFICATE

I, TERRY J. ASEL, NEW MEXICO PROFESSIONAL SURVEYOR NO. 15079, DO HEREBY CERTIFY THAT I CONDUCTED AND AM RESPONSIBLE FOR THIS SURVEY, THAT THIS SURVEY IS TRUE AND CORRECT TO THE BEST OF MY KNOWLEDGE AND BELIEF, AND MEETS THE "MINIMUM STANDARDS FOR SURVEYING IN NEW MEXICO" AS ADOPTED BY THE NEW MEXICO STATE BOARD OF REGISTRATION FOR PROFESSIONAL ENGINEERS AND SURVEYORS.

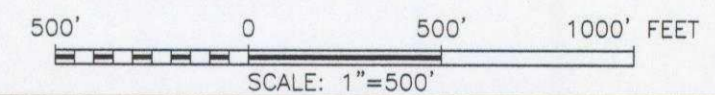
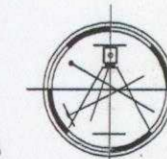
Terry J. Asel 1/29/2008
Terry J. Asel N.M. R.P.S. No. 15079

LEGEND

- ◆ - DENOTES MONITOR WELL
- △ - DENOTES BORE HOLE
- - DENOTES PROPERTY CORNER
- ⊙ - DENOTES SET 1/2" REBAR W/PVC CAP MARKED ASELE CONTROL PT. (WILSON) BENCHMARK FOR ELEVATIONS

**Asel Surveying
& Consulting**

P.O. BOX 393 - 310 W. TAYLOR
HOBBS, NEW MEXICO - 505-393-9146



ARTESIA AERATION LLC

TOPOGRAPHIC SURVEY OF ARTESIA AERATION LLC LAND FARM IN SECTIONS 5, 6, & 7, TOWNSHIP 17 SOUTH, RANGE 32 EAST, N.M.P.M., LEA COUNTY, NEW MEXICO.

Survey Date: 08/08/2007	W.O. Number: 070808MW-REV.C
	File: 070808MW-REV.C.DWG
Date: 01/29/2008	Drafted By: KA