

Mighty Ducks 15/16 WOAD/HE

A

A'

300153198500
 COG OPERATING LLC
 CCAP STATE COM 3
 NE SW NE
 Datum=3110.00
 Reference=KB
 TWP: 22 S - Range: 27 E - Sec. 16

300153325000
 CIMAREX ENERGY CO OF COLORADO
 FORN 3
 C SW NW
 Datum=3108.00
 Reference=KB
 TWP: 22 S - Range: 27 E - Sec. 15

300152511700
 MEWBOURNE OIL CO
 WALTERSHEID 1
 SW NW
 Datum=3092.00
 Reference=KB
 TWP: 22 S - Range: 27 E - Sec. 14

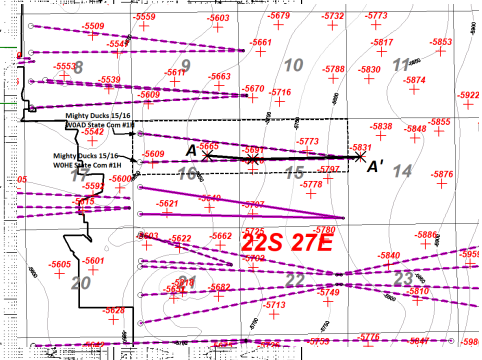
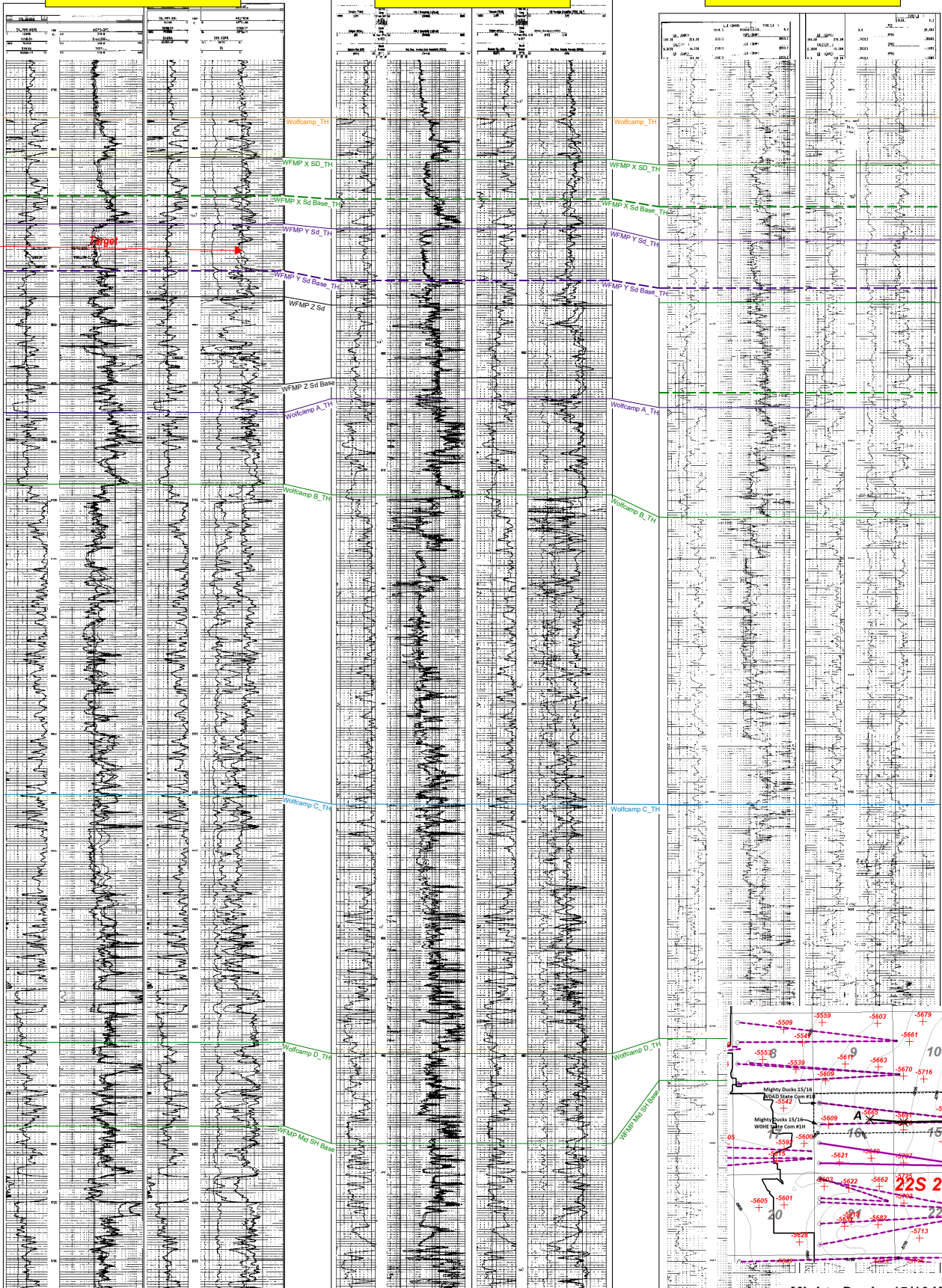
16G 22S/27E

15E 22S/27E

14E 22S/27E

WFMP
 WFMP Sd X
 WFMP Sd Y
 WFMP Sh A
 WFMP Sh B
 WFMP Sh C
 WFMP Sh D

WFMP
 WFMP Sd X
 WFMP Sd Y
 WFMP Sh A
 WFMP Sh B
 WFMP Sh C



Mighty Ducks 15/16 WOAD St Com #1H
 Mighty Ducks 15/16 WOHHE St Com #1H

-1000

-500

-500

TD=12000.00

TD=11927.00