

Layla 35/26 W0MD Fee #1H

Layla 35/26 W0NC Fee #1H

Layla 35/26 W0NC Fee #2H

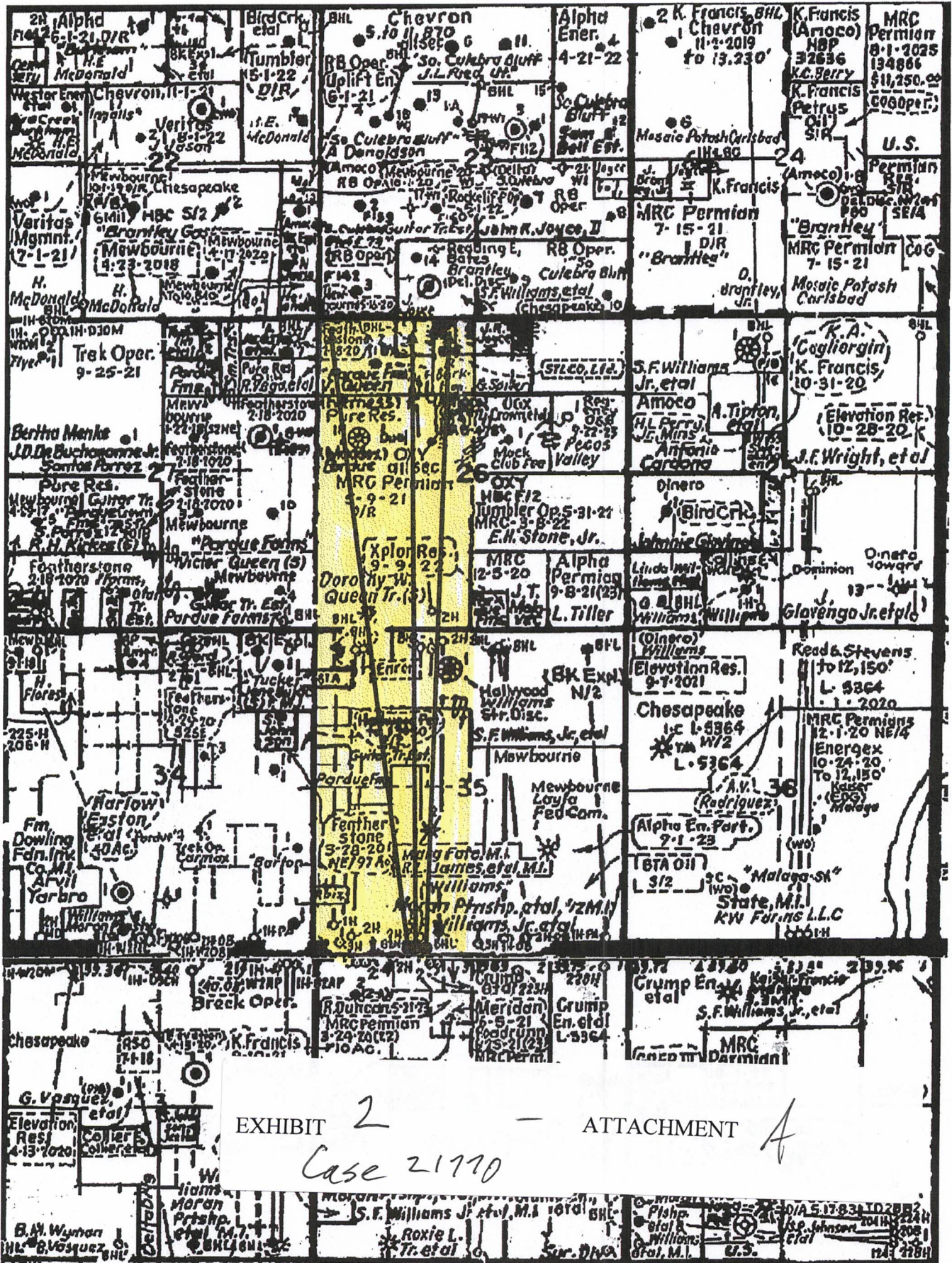


EXHIBIT 2 — ATTACHMENT A

Case 21770

District I
1625 N. French Dr., Hobbs, NM 88240
Phone: (575) 393-6161 Fax: (575) 393-0720
District II
811 S. First St., Artesia, NM 88210
Phone: (575) 748-1283 Fax: (575) 748-9720
District III
1000 Rio Brazos Road, Aztec, NM 87410
Phone: (505) 334-6178 Fax: (505) 334-6170
District IV
1220 S. St. Francis Dr., Santa Fe, NM 87505
Phone: (505) 476-3460 Fax: (505) 476-3462

State of New Mexico
Energy, Minerals & Natural Resources Department
OIL CONSERVATION DIVISION
1220 South St. Francis Dr.
Santa Fe, NM 87505

Form C-102
Revised August 1, 2011
Submit one copy to appropriate
District Office

AMENDED REPORT

WELL LOCATION AND ACREAGE DEDICATION PLAT

¹ API Number		² Pool Code 98220		³ Pool Name Purple Sage Wellcamp (Gas)					
⁴ Property Code		⁵ Property Name LAYLA 35/26 WONC FEE			⁶ Well Number 2H				
⁷ GRID NO.		⁸ Operator Name MEWBOURNE OIL COMPANY			⁹ Elevation 3015'				
¹⁰ Surface Location									
UL or lot no. N	Section 35	Township 23S	Range 28E	Lot Idn	Feet from the 225	North/South line SOUTH	Feet From the 1930	East/West line WEST	County EDDY
¹¹ Bottom Hole Location If Different From Surface									
UL or lot no. C	Section 26	Township 23S	Range 28E	Lot Idn	Feet from the 330	North/South line NORTH	Feet from the 2200	East/West line WEST	County EDDY
¹² Dedicated Acres	¹³ Joint or Infill	¹⁴ Consolidation Code	¹⁵ Order No.						

No allowable will be assigned to this completion until all interest have been consolidated or a non-standard unit has been approved by the division.

17 OPERATOR CERTIFICATION
I hereby certify that the information contained herein is true and complete to the best of my knowledge and belief, and that this organization either owns a working interest or unleased mineral interest in the land including the proposed bottom hole location or has a right to drill this well at this location pursuant to a contract with an owner of such a mineral or working interest, or to a voluntary pooling agreement or a compulsory pooling order heretofore entered by the division.

Signature _____ Date _____
Printed Name _____
E-mail Address _____

18 SURVEYOR CERTIFICATION
I hereby certify that the well location shown on this plat was plotted from field notes of actual surveys made by me or under my supervision, and that the same is true and correct to the best of my belief.

10-22-2020
Date of Survey

Signature and Seal of Professional Surveyor _____

19680
Certificate Number

REV: BH MOVE/NAME CHANGE-3/31/21

Job No: LS20100585R

District I
1625 N. French Dr., Hobbs, NM 88240
Phone: (575) 393-6161 Fax: (575) 393-0720
District II
811 S. First St., Artesia, NM 88210
Phone: (575) 748-1283 Fax: (575) 748-9720
District III
1000 Rio Brazos Road, Aztec, NM 87410
Phone: (505) 334-6178 Fax: (505) 334-6170
District IV
1220 S. St. Francis Dr., Santa Fe, NM 87505
Phone: (505) 476-3460 Fax: (505) 476-3462

State of New Mexico
Energy, Minerals & Natural Resources Department
OIL CONSERVATION DIVISION
1220 South St. Francis Dr.
Santa Fe, NM 87505

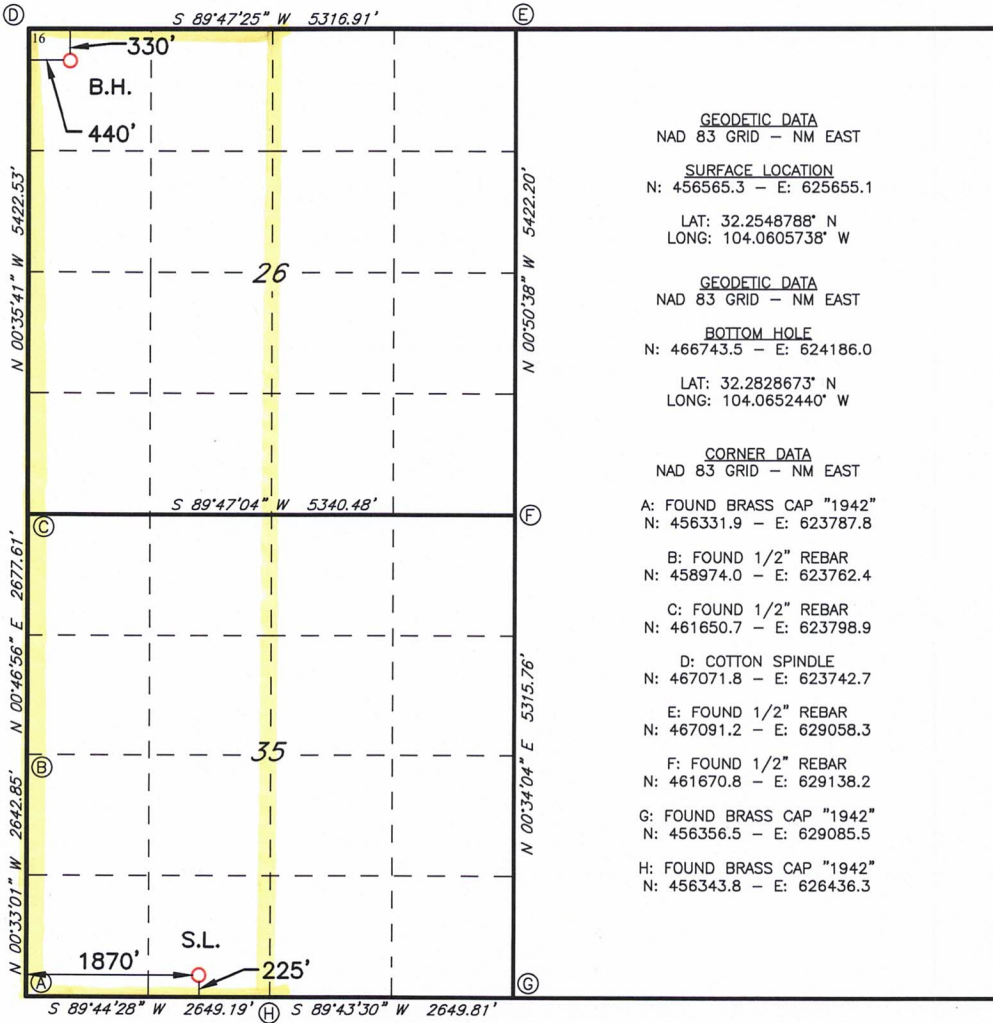
Form C-102
Revised August 1, 2011
Submit one copy to appropriate
District Office

AMENDED REPORT

WELL LOCATION AND ACREAGE DEDICATION PLAT

¹ API Number		² Pool Code		³ Pool Name					
		98220		Purple Sage; Wolfcamp (Gas)					
⁴ Property Code		⁵ Property Name						⁶ Well Number	
		LAYLA 35/26 WOND FEE						1H	
⁷ OGRID NO.		⁸ Operator Name						⁹ Elevation	
		MEWBOURNE OIL COMPANY						3015'	
¹⁰ Surface Location									
UL or lot no.	Section	Township	Range	Lot Idn	Feet from the	North/South line	Feet From the	East/West line	County
N	35	23S	28E		225	SOUTH	1870	WEST	EDDY
¹¹ Bottom Hole Location If Different From Surface									
UL or lot no.	Section	Township	Range	Lot Idn	Feet from the	North/South line	Feet from the	East/West line	County
D	26	23S	28E		330	NORTH	440	WEST	EDDY
¹² Dedicated Acres	¹³ Joint or Infill	¹⁴ Consolidation Code		¹⁵ Order No.					

No allowable will be assigned to this completion until all interest have been consolidated or a non-standard unit has been approved by the division.



¹⁷ OPERATOR CERTIFICATION
I hereby certify that the information contained herein is true and complete to the best of my knowledge and belief, and that this organization either owns a working interest or unleased mineral interest in the land including the proposed bottom hole location or has a right to drill this well at this location pursuant to a contract with an owner of such a mineral or working interest, or to a voluntary pooling agreement or a compulsory pooling order heretofore entered by the division.

Signature _____ Date _____
Printed Name _____
E-mail Address _____

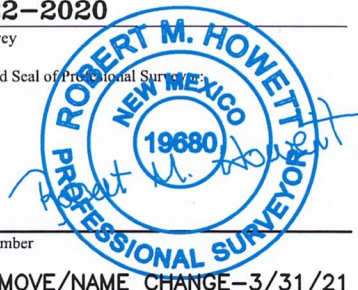
¹⁸ SURVEYOR CERTIFICATION
I hereby certify that the well location shown on this plat was plotted from field notes of actual surveys made by me or under my supervision, and that the same is true and correct to the best of my belief.

10-22-2020
Date of Survey

Signature and Seal of Professional Surveyor _____

19680
Certificate Number

REV: BH MOVE/NAME CHANGE-3/31/21



District I
1625 N. French Dr., Hobbs, NM 88240
Phone: (575) 393-6161 Fax: (575) 393-0720
District II
811 S. First St., Artesia, NM 88210
Phone: (575) 748-1283 Fax: (575) 748-9720
District III
1000 Rio Brazos Road, Aztec, NM 87410
Phone: (505) 334-6178 Fax: (505) 334-6170
District IV
1220 S. St. Francis Dr., Santa Fe, NM 87505
Phone: (505) 476-3460 Fax: (505) 476-3462

State of New Mexico
Energy, Minerals & Natural Resources Department
OIL CONSERVATION DIVISION
1220 South St. Francis Dr.
Santa Fe, NM 87505

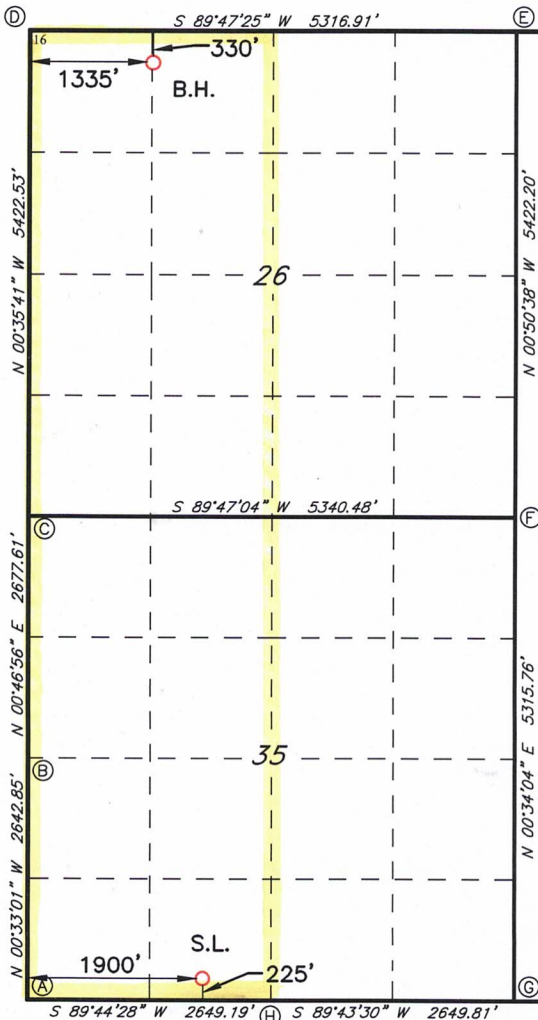
Form C-102
Revised August 1, 2011
Submit one copy to appropriate
District Office

AMENDED REPORT

WELL LOCATION AND ACREAGE DEDICATION PLAT

1 API Number		2 Pool Code 95220		3 Pool Name Purple Sage Wellcamp (Gas)					
4 Property Code		5 Property Name LAYLA 35/26 WONC FEE			6 Well Number 1H				
7 GRID NO.		8 Operator Name MEWBOURNE OIL COMPANY			9 Elevation 3015'				
10 Surface Location									
UL or lot no. N	Section 35	Township 23S	Range 28E	Lot Idn 225	Feet from the SOUTH	North/South line 1900	Feet From the WEST	East/West line EDDY	County EDDY
11 Bottom Hole Location If Different From Surface									
UL or lot no. C	Section 26	Township 23S	Range 28E	Lot Idn 330	Feet from the NORTH	North/South line 1335	Feet from the WEST	East/West line EDDY	County EDDY
12 Dedicated Acres		13 Joint or Infill		14 Consolidation Code		15 Order No.			

No allowable will be assigned to this completion until all interest have been consolidated or a non-standard unit has been approved by the division.



GEODETIC DATA
NAD 83 GRID - NM EAST
SURFACE LOCATION
N: 456565.4 - E: 625685.1

LAT: 32.2548788° N
LONG: 104.0604766° W

GEODETIC DATA
NAD 83 GRID - NM EAST

BOTTOM HOLE
N: 466746.7 - E: 625080.8

LAT: 32.2628702° N
LONG: 104.0623485° W

CORNER DATA
NAD 83 GRID - NM EAST

A: FOUND BRASS CAP "1942"
N: 456331.9 - E: 623787.8

B: FOUND 1/2" REBAR
N: 458974.0 - E: 623762.4

C: FOUND 1/2" REBAR
N: 461650.7 - E: 623798.9

D: COTTON SPINDLE
N: 467071.8 - E: 623742.7

E: FOUND 1/2" REBAR
N: 467091.2 - E: 629058.3

F: FOUND 1/2" REBAR
N: 461670.8 - E: 629138.2

G: FOUND BRASS CAP "1942"
N: 456356.5 - E: 629085.5

H: FOUND BRASS CAP "1942"
N: 456343.8 - E: 626436.3

17 OPERATOR CERTIFICATION

I hereby certify that the information contained herein is true and complete to the best of my knowledge and belief, and that this organization either owns a working interest or unleased mineral interest in the land including the proposed bottom hole location or has a right to drill this well at this location pursuant to a contract with an owner of such a mineral or working interest, or to a voluntary pooling agreement or a compulsory pooling order heretofore entered by the division.

Signature _____ Date _____

Printed Name _____

E-mail Address _____

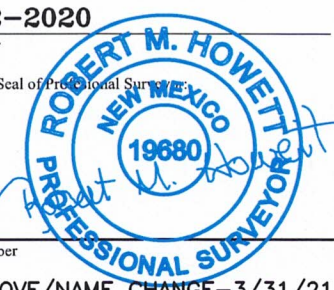
18 SURVEYOR CERTIFICATION

I hereby certify that the well location shown on this plat was plotted from field notes of actual surveys made by me or under my supervision, and that the same is true and correct to the best of my belief.

10-22-2020

Date of Survey _____

Signature and Seal of Professional Surveyor _____



19680

Certificate Number

REV: BH MOVE/NAME CHANGE-3/31/21

Job No: LS20100584R